

Wildlife of Eastern India: From Red Pandas to Rhinos

SINGALILA, KAZIRANGA, AND DARJEELING



Wilderness Travel



Wildlife of Eastern India: From Red Pandas to Rhinos

TRIP DATE

2024

April 10-21, 2024 Sold out

ABOUT OUR NEW TRIPS

This is a new adventure for 2024 and one that we are particularly excited about offering. We created this adventure with our partners in India and we have significant experience operating trips in this area. However, as with all new departures, flexibility and a spirit of adventure are always appreciated! Activities are described in the itinerary but they can vary, sometimes considerably, depending on weather conditions, the group, and other factors.

Some of the rarest species in the world are found in the fascinating wildlife reserves of eastern India, including the furry, tree-dwelling red panda and the prehistoric-looking one-horned rhino.

With Trip Leader Devendra Basnet, an inveterate naturalist who has been leading for WT for 35 years, we'll be immersed in the richness of India's natural habitats each day as we explore from the Himalayan foothills to the grassy savannas of Assam. To look for red pandas, we'll fly from Kolkata to Bagdogra in West Bengal and make our way by road up into the rugged Himalayan landscape of Singalila National Park, which straddles a dramatic ridge on the India-Nepal border. A population of endangered red pandas resides in the forests here, and with our local trackers, we'll look for these beautiful creatures as we hike peaceful trails. We'll also witness Himalayan panoramas from Singalila's high viewpoints. Afterwards, we'll unwind in charming Darjeeling, known as the Queen of the Hill Stations. Our next Indian wildlife adventure begins in Kaziranga National Park in the lowlands of Assam. Spread across the floodplains of the great Brahmaputra River, Kaziranga is home to some of the world's last one-horned rhinos, along with a host of other wildlife including tigers and large breeding populations of elephant. This unique journey is limited to just eight people, so early signup is advised.





Itinerary

TRIP DETAILS AT-A-GLANCE

- Length:** 12 days
Arrive: Kolkata, India
Depart: Kolkata, India
Lodging: 7 nights hotels and lodges, 4 nights homestay
Meals: All meals included (B=Breakfast, L=Lunch, D=Dinner)
Activity: Safaris, Walking, Wildlife and Natural History
Trip Level: 1 2 3 4 5 6
 Cultural exploration, wildlife viewing, easy to moderate walks and hikes, some long drives.

DAY 1 KOLKATA, INDIA

Welcome to India! On arrival, you'll be met outside the Customs area for a transfer to the Oberoi Grand Hotel in Kolkata. We'll gather for a Welcome Dinner tonight. Overnight at hotel...D

DAY 2 BAGDOGRA / SINGALILA NATIONAL PARK

Morning transfer to the airport for a flight to Bagdogra, a small but busy airport for North Bengal and Sikkim, surrounded by lush green tea gardens on the Himalayan foothills. Here we'll board rugged 4WD vehicles for a bumpy but fascinating drive on steep gravel roads up to Maneybhanjang, a small market town on the India-Nepal border and a gateway to Singalila National Park. Singalila is one of the most diverse Himalayan forests in India—a mix of fir, deciduous hardwood, and rhododendron, with a thick bamboo understory. The altitudes of the park range from 7,000 to 12,000 feet. We'll overnight near the park at Shikhar Tarry Lodge, a simple accommodation that grants us great access to the region...BLD

Approximate Driving Time: 3-3.5 hours on gravel roads, with a restaurant lunch en route. There will be beverages and light snacks in the vehicle.

Approximate Flight Time: 60 minutes

DAYS 3-5 TRACKING RED PANDAS

We'll have three full days with our local trackers. Tracking will involve hiking along a jeep trail as well as going off-trail into the forest as needed on challenging hikes involving bushwhacking through trees and scrambling up and down slippery hillsides. There are an estimated 32 red pandas within the limits of the park. Typically, we'll be up early at 6:00 am to join our trackers, who will have gone out earlier in the morning to find pandas. Once at a panda site, we'll have 30 minutes to 1 hour to get a look at them (they tend to stay high up in the trees so viewing

can be difficult). Lunch will be back at Shikhar Tarry Lodge or served in the field, depending on our location. If sightings are on roads, we will go by vehicle for the sighting. On one of the days we're here, we'll journey up to Sandakphu (11,929'), a famous spot for viewing Himalayan sunrises and sunsets over mighty Kanchenjunga, the third highest mountain in the world.

The red panda (*Ailurus fulgens*), also known as the fire fox, is native to the eastern Himalayas and southwest China. Its fur is reddish brown, with a shaggy tail and a waddling gait due to its short front legs. Red pandas are typically a bit over two feet long and are tree dwellers. They mainly feed on bamboo, but also eggs, birds, and insects when the opportunity arises. They are solitary animals, active between dawn and dusk. The original "panda" name was given to the red panda before the giant panda of China was known. Once considered to be in bear family, and later in the raccoon family, the red panda is actually now classified in a family of its own: Ailuridae. Other mammals that are known to be in the park are Himalayan black bear, leopard, barking deer, yellow-throated marten, wild boar, pangolin, and pika. Singalila is also known as a birding paradise, with more than 300 species recorded, including exotic species such as blood pheasant and fire-tailed myzornis. Because the region is well watered by the monsoon,

over 600 varieties of orchids bloom in Singalila, the largest concentration in any single geographical area in the world. Overnights at Shikhar Tarry Lodge...BLD each day

DAY 6 DARJEELING

This morning we have another chance to search for red panda, then bid farewell to our trackers and the lodge staff and return to Maneybhanjang for lunch. We then head to Darjeeling, "the Place of the Thunderbolt" (as its Tibetan name is translated). Often called the Queen of the Hill Stations, Darjeeling straddles a ridge at 7,200 feet with views of Kanchenjunga on the northern horizon. The town and surrounding region share a complex history with Bhutan, Nepal, and Sikkim, having passed from one kingdom to another and finally being annexed by the British empire in 1866. Darjeeling's cool mountain air attracted the colonial British, who made it a favorite summer retreat to escape the tropical heat of the Indian plains. After checking into the Mayfair Spa & Resort, you can enjoy a short walk from the hotel to the Chowrastra, the historic central square at the heart of Victorian Darjeeling, to get a feel for the daily buzz of local life in Darjeeling... BLD

Approximate Driving Time: 1-1.5 hours on gravel roads. There will be beverages and light snacks in the vehicle.



DAY 7 EXPLORE DARJEELING

Today we visit a number of places, including the Himalayan Mountaineering Institute, with its rare collection of photographs and climbing equipment used in historic Himalayan ascents of the 20th century. Because Nepal was closed to foreigners until 1950, all Everest expeditions prior to that started from Darjeeling. Tenzing Norgay, who summited Everest in 1953 with Sir Edmund Hillary, became the first Director of Field Training for the institute when it was set up in 1954. On the same property, we'll visit the Padmaja Naidu Himalayan Zoological Park, which features mammals and birds of the higher altitudes. The zoo has led successful captive breeding programs for the snow leopard, the critically endangered Himalayan wolf, and the red panda. Wilderness Travel is a donor to the zoo's red panda research and rehabilitation center.

We'll also take a short walk through wooded hills up to the Mahakal Temple above the Mall, then visit the Tibetan Refugee Self-Help Centre, where we'll meet families earning a living by producing Tibetan handicrafts such as rugs, paintings, and garments. Many Tibetan families took refuge in Darjeeling after the Chinese invasion of their home country. Time permitting, we can take a 1.5-hour ride on the classic Darjeeling Himalayan Rail, a narrow gauge "toy train" that

brings us in heritage style to Ghum, the highest railway station in India at 7,400 feet, and around the spiraling Batasia Loop track, with wonderful Himalayan views along the way (clear skies permitting). Dinner and overnight at the Mayfair Spa & Resort...BLD

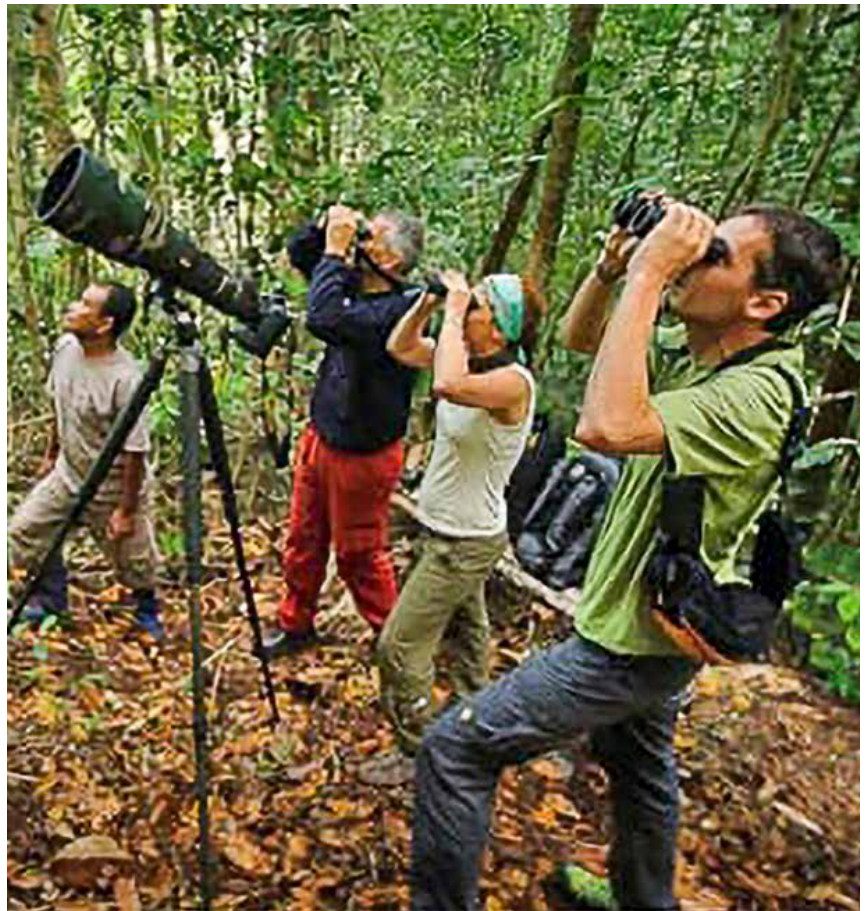
DAY 8 KANCHENJUNGA SUNRISE / SILIGURI

As an option before dawn for very early risers this morning, we offer a 1.5-hour drive (each way) to the famous Himalayan viewpoint called Tiger Hill. Here, as the sun begins to rise, visitors are treated (clear skies permitting!) to a fantastic panorama of the huge massif of Kanchenjunga with Everest and Makalu in view at the far eastern corner of the view. We return to the hotel for breakfast, then head to Siliguri, where we check into the Mayfair Tea Resort, surrounded by tea gardens. Enjoy a walk in the hotel's tea gardens, if you wish, before dinner (the tea gardens are in operation only in spring)...BLD

Approximate Driving Time: 3 hours

DAY 9 BAGDOGRA / DIBRUGARH / KAZIRANGA NATIONAL PARK

Today is a long travel day as we descend from the Himalayan foothills to the broad plains of Assam. We transfer to Bagdogra airport, where we catch our flight to Dibrugarh, a





city in Upper Assam with sprawling tea gardens. From here, we drive further to Kaziranga National Park on the southern banks of the great Brahmaputra River. Overnight at Infinity Resort Kaziranga, not far from the park headquarters...BLD
 Approximate Driving Time: 5-6 hours Dibrugarh to Kaziranga, including rest stops
 Approximate Flight Time: 1 hour, 20 minutes

DAYS 10-11 KAZIRANGA NATIONAL PARK / ONE-HORNED RHINOS AND MORE

Spread across the floodplains of the Brahmaputra River, Kaziranga protects a vast expanse of tall "elephant grass," marshland, and dense tropical broadleaf forests. The park is home to tigers, elephants, and, most famously, the world's largest population of Indian one-horned rhinoceroses. Asian rhinos have an even more armor-plated look than their African counterparts due to all the folds in their skin. They're vegetarians, grazing on tall elephant grasses and shrubs. They can be called a conservation success, as there were only 600 left in the 1970s, but after efforts by the Indian and Nepalese governments and the World Wildlife Fund, they now number

about 3,500 in India and Nepal. Even so, the species faces the ever-present threat of poaching for its horn and continuing habitat loss.

We'll set out each day for morning and afternoon game drives by 4WD vehicle. As we explore, we'll look for elephant, herds of wild Asiatic water buffalo, swamp deer, hog deer, gaur, sambar, Indian muntjac (barking deer), and, with a bit of luck, the elusive royal Bengal tiger (because of the park's tall grasses, it can be hard to spot them). Kaziranga is home to about 15 species of India's threatened mammals, and Ganges River dolphins swim in the park's rivers. The rich birdlife includes egrets, herons, storks, fish-eating eagles, and grey pelicans. We'll enjoy our Farewell Dinner this evening. Overnight at Infinity Resort Kaziranga...BLD each day

DAY 12 JORHAT / KOLKATA / DEPART

A morning drive brings us to Jorhat, where we connect a flight to Kolkata. Depart Kolkata on homeward-bound flights. Day rooms will be held for us at the Holiday Inn Kolkata until 10:00 pm...BLD

Trip Details

DATE AND PRICING INFORMATION

TRIP COST

Prices are per person, valid through Spring 2024

\$7,695 (7-8 members)

\$8,295 (4-6 members)

Single supplement: \$1,570

Internal airfare: \$345 (subject to change)

To offer the lowest possible cost, our trips are priced according to the number of participants on the trip. All costs are per person, based on double occupancy. If you wish to have a single room, you must pay the single supplement fee. Please note that Wilderness Travel staff, or guests of Wilderness Travel such as travel writers, photographers, or leaders-in-training, are not included in the tier pricing count.

CURRENCY EXCHANGE RATE

Because the prices published for our program are set so far in advance of the trip dates, we are occasionally faced with exceptional cost increases and/or currency fluctuations that affect the actual cost of running the trip. In most years, no price changes are necessary. However, we do reserve the right to raise or lower the trip price if there is a significant change in costs or exchange rates. If this is the case, your final invoice will reflect the difference in trip cost.

TRIP COST INCLUDES

- Expert leadership of a Wilderness Travel Trip Leader and local guides
- Internal airfare (three flights)
- Accommodations as noted based on double occupancy
- All meals included as indicated in the Detailed Itinerary (B=Breakfast, L=Lunch, D=Dinner)
- Drinks and snacks available daily in the vehicle
- Park fees
- Land transportation and airport transfers as noted, baggage handling

TRIP COST DOES NOT INCLUDE

International airfare to and from Asia, any meals not specified after each itinerary day, airport departure taxes, optional tipping or gratuities to leaders or staff, additional hotel nights that may be necessitated by airline schedule changes or other factors, visa fees for India and Nepal, cost of medical immunizations (if any), travel insurance, and other expenses of a personal nature (laundry, alcoholic beverages, etc.). Optional side trips and excursions are also at your own expense.

PAYMENT SCHEDULE

At time of reservation: \$600

110 days prior to departure: Balance

CANCELLATION AND TRANSFER FEE SCHEDULE

Up to 111 days prior to departure: No charge!

61-110 days prior to departure: 25% of trip cost

46-60 days prior to departure: 50% of trip cost

45 days or less: 100% of trip cost

*Please note that this differs from our regular catalog departures.

TRAVEL INSURANCE

We highly recommend you purchase travel insurance. You can take advantage of a comprehensive Travel Protection Plan designed for Wilderness Travel by Travelex, or purchase other insurance on your own. See our website for details:

www.wildernesstravel.com/insurance

Extend Your Adventure

To help you make the most of your adventure, we've created several exciting trip extensions. For detailed information, including full itineraries and complete pricing, please visit our webpage and click on "Extend Your Trip": www.wildernesstravel.com/trip/india-east-wildlife-panda-rhino-singalila-kaziranga-tour



KANHA NATIONAL PARK EXTENSION

Kanha is one of the Indian subcontinent's greatest wildlife reserves and a great place in India to see the Royal Bengal tiger. Besides tigers, there are more than 200 species of birds and some 22 species of mammals in residence here. On guided excursions, explore by jeep through the park's bamboo thickets, dadar (plateau grasslands) and sal forests, which gave birth to Rudyard Kipling's classic *The Jungle Book*. Overnights are at the Baagh Resort, a comfortable jungle-surrounded retreat adjacent to the edge of the park, or the Taj Banjaar Tola (deluxe option), an elegant tented camp on the banks of the Banjaar River overlooking Kanha.

5 days. From \$2395.

SOUTH INDIA EXTENSION: THE MALABAR COAST

Roam the narrow lanes of Cochin, set along the Arabian Sea and a favorite port of call in the spice trade for two thousand years. Then, in enchanting tropical Kerala, watch the pageant of traditional riverside life as you journey through tranquil waterways and overnight aboard a beautiful private houseboat (and enjoy the good life as your on-board chef serves you a selection of savory Keralan cuisine!).

5 days. From \$2925



VARANASI AND KHAJURAHO EXTENSION

As one of the seven sacred cities of Hinduism, the holy city of Varanasi is a magnet for more than a million pilgrims from around the world who come annually to worship, meditate, and bathe in the sacred waters of the Ganges River. With your private guide, stroll through ancient alleys and past golden temples and ashrams, and watch the slanting sun rise over haunting riverside ghats. At the World Heritage Site of Khajuraho, discover some of India's most famous temples, a showcase of sculpture reflecting the celebration of human activity in everyday life. Accommodations throughout are in garden-set hotels, oases of comfort after an active day of exploring.

4 days. From \$1725.

Arrival & Departure

Upon confirming your trip reservation, we will send you a Welcome Packet that includes a list of documents (passport, visas, etc.) required for your trip. Please feel free to call if you would like this information before making your air arrangements.

If you have booked extra services before or after the trip, an Extra Services Confirmation will be sent with your Final Documents.

ARRIVAL & MEETING PLACE

Kolkata, India

Suggested Airport: Netaji Subhash Chandra Bose International Airport (CCU)

Suggested Date & Time: Day 1, by 3:00 pm

Meeting Place: We will provide a complimentary transfer from the airport to the Oberoi Grand. An orientation meeting will take place on the evening of Day 1. Please note that check-in at the hotel begins at 2:00 pm.

DEPARTURE

Kolkata, India

Suggested Airport: Netaji Subhash Chandra Bose International Airport (CCU), Kolkata

Suggested Date & Time: Day 12, after 8:00 pm

We are scheduled to arrive in Kolkata in the afternoon/evening of Day 12. Day rooms are held for us at the Holiday Inn Kolkata until 10:00 pm. An airport transfer is provided to/from the hotel. If you would like to remain in your room past 10:00 pm, you can extend your stay to a full overnight (at additional cost—please see the Extra Services Request Form for more information). Wilderness Travel will provide your transfer back to the airport, no matter when you depart.

INTERNATIONAL AIR TRAVEL

You are responsible for making your own arrangements for flights to and from India. There are many online consolidators for booking travel, but for more personal help arranging air transport, you can contact Exito Travel at 1-800-655-4053 in the US or 1-800-670-2605 in Canada. They are very adept at putting flight itineraries together, to even the most far-flung places. More information can be found at www.exitotravel.com.

Depending on your routing, it is necessary to depart from the US one or possibly two days prior to Day 1 of the trip itinerary. The name on your airline ticket must match the name on your passport exactly, and your passport must be valid for at least six months after your date of return to the US.

Please do not purchase your tickets until you are confirmed on the trip. Once tickets are purchased, please forward a copy of your email flight confirmation from the airline. It is your responsibility to ensure your flight times coordinate with the arrival and departure logistics for this trip.

Accommodations



OBEROI GRAND

Kolkata, India

Day 1 (1 night)

Fondly known as the Grand Dame of Kolkata, The Oberoi Grand is situated in a prime location, near the city's central business district, bustling markets, and cultural landmarks. Dating back to the late 1880s, The Oberoi Grand was frequented by the country's leading figures during colonial times and even now hosts grand functions for heads of state in the city's largest pillarless Grand Ballroom. It was the first hotel to be acquired by Rai Bahadur M.S. Oberoi, founder of The Oberoi Group. Under his ownership, it became known for its classic style and modern facilities.



SHIKHAR TARRY LODGE

Mane Bhanjang, India

Days 2 to 5 (4 nights)

This rustic yet comfortable lodge is more of a homestay than a hotel, but it gives us fantastic access for our panda tracking. The lodge has simple guest rooms and bathrooms, a seating area, dining room and kitchen. The staff is friendly and helpful. There is a small fireplace to enjoy after your day's adventures.



MAYFAIR SPA AND RESORT

Darjeeling, India

Days 6 to 7 (2 nights)

The Mayfair is a heritage hotel that was once the summer home of the Maharaja of Nazargunj. With 43 guest rooms, it has a prime location opposite the Governor's House and is within walking distance of all of Darjeeling's attractions. The hotel maintains its Old World charm with classic architecture and warm hospitality. Its modern amenities include a stellar spa, a tea boutique, and fantastic dining options.



MAYFAIR TEA RESORT

Siliguri, India

Day 8 (1 night)

Surrounded by thousands of acres of tea gardens on a lush tea estate, the Mayfair is a luxury hotel with state-of-the-art facilities. Designed with classic Tudor architecture in mind, it features comfortable public spaces with vintage furnishings and a collection of centuries-old collectibles on display. The resort has a stylish tea lounge, a bar themed around a classic English pub, two excellent multi-cuisine restaurants, and a well-stocked poolside bar.

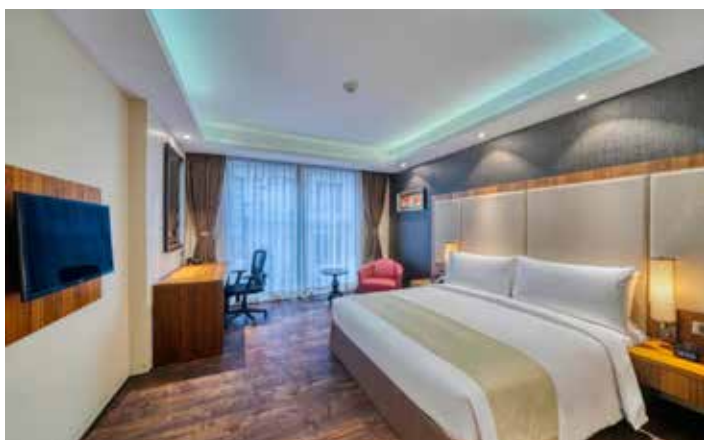


INFINITY RESORT KAZIRANGA

Kaziranga, India

Days 9 to 11 (3 nights)

Infinity Resort Kaziranga has 16 simple cottages scattered around its peaceful grounds. Each cottage has a balcony overlooking the gardens and is crafted using local material when possible, including thatched roofs and teak furnishings. There is a swimming pool and a small pond for a nature walk.



HOLIDAY INN KOLKATA DAY ROOM

Kolkata, India

Day 12

This hotel is located near the airport and has nice guest rooms with comfortable beds, spacious bathrooms, and Wi-Fi. The hotel also has a restaurant, bar, fitness room, and outdoor pool. The staff is friendly and attentive.

These are our signature accommodations for this trip. Although it is highly unlikely, we may make substitutions when necessary. To see more photos and descriptions, please visit our *Wildlife of Eastern India: From Red Pandas to Rhinos* webpage and click on "Accommodations."

Our Guide

MAKES ALL THE DIFFERENCE

Our India Trip Leaders are the best and most experienced guides in the country, with a gift for bringing the natural world to life. They focus on all the details, from finding wildlife in places our untrained eyes would miss to answering your every question. They have a passion and a joy for creating an unforgettable journey, and we are extremely proud of them and the incredible travel experiences they make possible.



DEVENDRA BASNET

Devendra Basnet was born in the foothills of the Himalayas in Darjeeling, India, and makes his home in Kathmandu, Nepal, with his wife and two children. A WT Trip Leader since 1987, “DB” leads our cultural and hiking journeys into the Himalayas, across India, and along the ancient Silk Roads of Central Asia. His university studies in Zoology launched him in an early career as a naturalist guide, tracking tigers and spotting rare birds in Nepal’s renowned Royal Chitwan National Park, and collecting elusive Himalayan butterflies for the British Natural History Museum. “I love working with people and working in beautiful surroundings, so guiding is a natural for me. I especially love being in the high Himalayas, from Tibet to Bhutan to India, and in areas rich in nature and wildlife. I want my trip members to appreciate how fast everything is changing, and help them take back wonderful memories of the wild places and rich cultures we visit.” Devendra speaks English, Nepali, Hindi, as well as some Tibetan and Bengali and is learning Chinese.



What the Trip is Like

WHAT THE TRIP IS LIKE

This trip is rated Level 2+, Easy to Moderate, according to our trip grading system. It is a cultural and natural history journey with travel by vehicle with hikes and walks that can be enjoyed by anyone in reasonably good health who has recent hiking experience.

TERRAIN

Our panda-tracking hikes involve bushwhacking through trees and dense bamboo thickets up and down steep hillsides. If lucky, the site can be nearby but often involves a scramble through the thicket, and can involve negotiating slippery sections and rocky gullies. These hikes are best suited for people who have a good sense of balance. There is also bumpy, rough road travel on dirt or gravel tracks.

GETTING IN SHAPE

Although this is not a particularly rigorous trip, we recommend that each participant undertake a preparatory program of physical conditioning. Daily walking or regular hiking, jogging, and stair-climbing are excellent ways to prepare for the trip. Any travelers to India should bring along flexibility, a sense of humor, curiosity about new peoples and places, and an openness to the unexpected.

WEATHER

Singalila National Park is at altitudes between 7,000 and 10,000 feet in the foothills of the Himalayas. In spring in Singalila, daytime highs will be in the chilly 50s and 60Fs, even dropping as low as the 30s at night. There is more precipitation in spring and skies can sometimes be hazy but the rhododendrons should be in beautiful bloom and the stunning tea gardens will be operational. In autumn, daytime highs will be in the 60s, with nights in the low 50s, and the Himalayan vistas should be mostly clear. As in all mountain areas, there is always the possibility of rain. In Darjeeling in spring, temperatures will be pleasant, ranging from the 60Fs to the high 70Fs, with autumn temperatures ranging between 50F and 75F. In Kaziranga National Park in the lowlands of Assam, it will be quite warm, with spring temperatures between 70F and 85F and autumn temperatures ranging between 65F and 80F, dropping to much cooler at dawn.

ACCOMMODATIONS

We enjoy excellent hotels and a comfortable wildlife lodge on this journey, plus four nights in Shikhar Tarry Lodge, a very simple “homestay-style” accommodation. A recommended clothing and equipment list is provided in our Pre-Departure Booklet, and more detailed description of each accommodation can be found in the “Accommodations” section.

TRANSPORTATION

In Singalila, the only vehicles available are old-fashioned “vintage” land rovers with limited shocks and suspension systems, which make for bumpy rides on the dirt roads. In Kaziranga, we use open-roof safari vehicles that guarantee everyone a “window” seat and great wildlife viewing opportunities. All other road travel will be in modern and comfortable vehicles—typically a Toyota Innova.

CHOOSING THE RIGHT TRIP

Adventure travel often involves exotic destinations, unusual levels of physical exertion, or activities you may not have participated in previously. We work hard to help you choose the right trip for you, paying attention to your individual interests, abilities, and needs. If you have questions about the level of comfort or any of the activities described in this itinerary, please call Wilderness Travel at 1-800-368-2794 and ask for the Asia Manager or email us at asia@wildernesstravel.com.

REFERENCES

We'd be happy to put you in touch with a past client that has traveled with us on this or a similar trip.

VISIT OUR WEBSITE

At www.wildernesstravel.com, you can book your trip online or find out about added departures, last-minute deals, and one-time Limited Edition adventures that aren't listed in our catalog. You can also access our complete library of detailed itineraries filled with enticing photos and videos, read bios of our Trip Leaders, find descriptions of trip accommodations, and check real-time availability of any trips that interest you.

Toucan Club Rewards & Discounts



MEN'S T-SHIRT



WOMEN'S T-SHIRT



PATAGONIA SYNCHILLA FLEECE VEST
PLUS INSULATED CAMELBAK WATER BOTTLE



PATAGONIA R1 PULLOVER

We are very proud to have one of the highest rates of repeat travelers in the business, and have established the Wilderness Travel Toucan Club to reward you for your loyalty. For more information, please visit the Toucan Club page of our website at www.wildernesstravel.com/toucan.

Here's how it works:

YOUR FIRST TRIP

As a first-time traveler, you receive a lightweight Wilderness Travel T-shirt and set of durable WT Luggage Tags. On subsequent trips, we're happy to send you a new WT T-shirt and set of Luggage Tags by request.

YOUR SECOND TRIP

A top quality Wilderness Travel insulated stainless steel water bottle by CamelBak and a cozy Wilderness Travel fleece vest by Patagonia (\$130 value).

YOUR THIRD TRIP

A versatile Wilderness Travel R-1 pullover by Patagonia (\$140 value).

YOUR FOURTH TRIP

Discounts on the cost of your trip begin! You receive a 4% discount on the tour cost.

FIVE AND MORE TRIPS

You receive a 5% discount on the base trip cost. On your sixth trip, you receive a 6% discount, and so on up to your 10th trip. The maximum discount is 10%, with a ceiling of \$500.

Note: Due to special pricing considerations, Toucan Club discounts do not apply to our Private Journeys or Special Events. However, your participation on these trips does count toward your Toucan discount on future departures of Wilderness Travel's regular adventures.

TERMS & CONDITIONS

Toucan Club travel discounts cannot be used in conjunction with any other discount, unless otherwise specified. Discounts are deducted from the base trip cost and shown on the final invoice. The base trip cost is the main land/tier cost and does not include single supplement fees, extensions, internal airfare, or other additional charges. Bonus gifts (T-shirts, luggage tags, vests, water bottles, and pullovers) will be mailed approximately three weeks prior to trip departure. Terms and conditions of Toucan Club bonuses are subject to change or cancellation at the discretion of Wilderness Travel, Inc.

Travel Notes



Travel Notes





WILDERNESS TRAVEL HAS BEEN AWARDED:

World's Best Tour Operators: *Travel + Leisure*, 2022, 11-time winner
Best Travel Specialists in the World: *Condé Nast Traveller*, 2022, 3 years in a row
Best Wildlife, Hiking & Walking Trips: *AFAR Magazine*, 3 years in a row
Best Adventure Travel Companies: *USA Today*
Trip of the Year: *Outside Magazine*, 9-time winner
50 Tours of a Lifetime: *National Geographic Traveler*, 9 years in a row
Best Adventure Travel Companies: *National Geographic Adventure*, 3-time winner

Please be advised that California has established a Travel Consumer Restitution Fund under the California Seller of Travel Law that took effect January 1, 1996. This fund is designed to protect consumers from unscrupulous practices by discount airfare ticket sellers or air charter operators. Unfortunately, this law does not cover non-California residents and, even in the case of California residents, it does not cover any foreign travel where the foreign "providers of transportation or travel services" are not in compliance with the Sellers of Travel Law (compliance being defined as registered as a Seller of Travel in California and a participant in the Travel Consumer Restitution Fund). Thus none of Wilderness Travel's tours qualify and we are required by law to advise each client that they are not covered by the California Travel Consumer Restitution Fund. California law requires sellers of travel to maintain a trust account or bond. This business has a trust account. California Seller of Travel #100769640

While as accurate as possible at the time of printing, this itinerary should be considered an approximate indication of the schedule and scope of activities and trip routing, rather than an inflexible schedule of events; it is subject to change due to circumstances beyond our control. This trip is subject to the Limitation of Liability and all the terms and conditions as detailed in the General Information section of the Wilderness Travel Catalog.

Revised: October 13, 2023 3:46 PM



Wilderness Travel

1102 Ninth Street, Berkeley, CA 94710

800-368-2794 • 510-558-2488

www.wildernesstravel.com • info@wildernesstravel.com