

# Sri Lanka Private Journey

A CULTURAL AND WILDLIFE ADVENTURE



Wilderness Travel





**WHEN TO GO**  
Mid-December to March

## Sri Lanka Private Journey

### ABOUT PRIVATE JOURNEYS

Wilderness Travel Private Journeys are designed for people who want to travel with their own small private group, but who still want to experience the same superb itinerary design, great accommodations, and signature quality of Wilderness Travel's escorted group trips. These Private Journeys allow you to choose your own dates and your traveling companions—even if it's just the two of you—yet still enjoy a guided adventure.

Contact us for availability, questions, or to book your adventure!

With your private guide, discover the legendary temples, verdant tea plantations, welcoming people, and 2,000-year-old culture of Sri Lanka. Explore the 12th century temple-ruins of Polonnaruwa, hike up the stone steps of King Kashyapa's fortress at Sigiriya, visit cool highlands where tea is cultivated, sample Sri Lanka's famous fish curries, and look for wildlife at Yala National Park, haunt of elephant and leopard. As you explore, you'll meet a wonderful array of people, from tea planters to monks who follow the traditions of Theravada Buddhism, introduced to the island in the 3rd century BC. Optional add-ons include a cocktail-making class and tasting at a rooftop bar, participating in a traditional almsgiving to local monks, and a private tour of a cinnamon estate.







# Itinerary

## TRIP DETAILS AT-A-GLANCE

- Length:** 13 days
- Arrive:** Colombo, Sri Lanka
- Depart:** Colombo, Sri Lanka
- Lodging:** 12 nights hotels
- Meals:** All meals included except 1 lunch (B=Breakfast, L=Lunch, D=Dinner)
- Activity:** Cultural Adventures, Wildlife and Natural History
- Trip Level:** 1 2 3 4 5 6  
A mix of easy to moderate walks and hikes, cultural explorations

## DAY 1 COLOMBO, SRI LANKA

Arrive in Colombo, where you are met and transferred to the Galle Face Hotel, a colonial-style hotel set on the seafront. Many flights arrive very early in the morning; Wilderness Travel has reserved the night before Day 1 at the hotel to guarantee that your room is ready whenever you arrive on Day 1. The remainder of the day is at leisure to rest or explore Colombo on your own. In the evening, enjoy a Welcome Dinner and Trip Orientation...BD

## DAY 2 COLOMBO

Colombo, for centuries the traditional gateway to the Orient, is a fascinating blend of east and west, past and present. Your explorations today include the city's markets and an eclectic mix of its Hindu and Buddhist temples. You'll also take a short walk in the area of the historic Colombo Fort and enjoy lunch at a restaurant located on the grounds of the old Dutch hospital, a relic from the Dutch occupation that's been transformed into a shopping and dining venue. Overnight at Galle Face Hotel...BLD

## Optional Add-On

**Cocktail Making Course and Tasting.** At a popular rooftop bar and restaurant, learn how to make the famous "Tamarind," a Sri Lankan "whiskey" made with Arrack (also spelled Arak), a distilled alcoholic beverage produced using coconut. You will have the opportunity to create one of your own.

*See "Trip Cost" section for additional costs*



### DAY 3 ALIYA RESORT / KAUDULLA NATIONAL PARK OR HURULU ECO PARK

Depart Colombo for a journey to Aliya Resort, your accommodation for the next three nights. After lunch and some time to relax, head out on a jeep safari in either Kaudulla National Park or Hurulu Eco Park, both home to large herds of wild Sri Lankan elephants. The elephants migrate seasonally between the parks, so you'll visit whichever park currently has the most elephant sightings. Kaudulla has been a sanctuary since 1938 and features a magnificent 7,400-acre water reservoir from the 4th century. This important wetland supports paddy fields and many aquatic birds including painted storks and spot billed pelicans. Overnight at the Aliya Resort, set in a beautiful verdant landscape overlooking the rock fortress of Sigiriya...BLD  
Approximate driving time: 4-4.5 hours

### DAY 4 SCHOOL VISIT / ANGAMPORA / SIGIRIYA

Near Ritigala, visit a local school to chat with some of the 20 students, who are 5-10 years in age, then head to the historical village of Angampora, where you'll see a private demonstration of Sri Lanka's indigenous martial arts. It may be possible to

meet the Master, who is responsible for reviving this ancient defense form that was banned during colonial occupation. The Master is also renowned across the island for his healing skills and predicting the future.

Returning to your resort, watch a cooking demonstration, then enjoy a savory traditional Sri Lankan feast cooked in clay

---

*"We very much enjoyed the diversity of experiences—visiting historic and religious sites, interacting with local people, viewing wildlife, and experiencing different environments. Each day was a new adventure!"*

---

*Jo L., Santa Barbara, CA*

pots and served on banana leaves. In the afternoon, a short drive brings you to Sigiriya, the famed rock fortress of King Kashyapa (477-495 AD). As you approach the site by road, you'll see in the distance a towering rock outcrop rising from the green jungle plains. It was atop this enormous rock that King Kashyapa constructed his elaborate palace in the 5th century AD. Follow steep stone steps to the top, a flat, three-acre summit plateau with the ruins of pavilions, a palace, pleasure gardens, and uninterrupted views of lush green jungle in every direction. Sigiriya ("lion's throat") was so named because visitors had to pass through the carved throat of a lion to get to the top. The Sigiriya maiden frescoes, etched into the sheer rock face, are among the most famous features of the site. Originally there were 500; only 19 remain today. Tonight, enjoy a barbecue dinner in the private gardens





of your hotel. Overnight at the Aliya Resort...BLD  
Approximate driving time: 3.5-4 hours (total)

### Optional Add-On

#### Traditional Almsgiving

After the martial arts demonstration at Angampora, take part in a traditional almsgiving ceremony to local monks.

See "Trip Cost" section for additional costs

### DAY 5 ANURADHAPURA / POLONNARUWA

Your explorations start in the early morning with a visit to Anuradhapura, the center of the island's Buddhist civilization and undoubtedly the grandest city of ancient Sri Lanka (it is one of Sri Lanka's eight World Heritage Sites). The earliest capital of Sri Lanka, "the city of Anura" was home to the royal court from 437 BC to 1017 AD. Here you'll find the island's oldest Buddhist shrines, some dating back to the 3rd century BC, impressive white dagobas, along with gardens, beautifully executed stone baths and ponds, and a superb irrigation system of reservoirs and canals. Dagobas are elaborate relic chambers of brick and earth topped by a golden spire (the word "pagoda" is derived from the word dagoba). One dagoba here, the Thuparama, is considered to be the oldest in Sri Lanka and is believed to enshrine the collarbone relic of the Buddha. The 3rd century Isurumuniya Temple at Anuradhapura is noted

for its elaborate rock carvings. At the heart of this huge and evocative ruin is a 2,000-year-old bodhi tree—the Sri Maha Bodhi. It was grown from a cutting of the tree in Kushinagar, India, under which the Buddha attained enlightenment, and was brought here by Sanghamitta, the founder of an order of Buddhist nuns and the daughter of the great Indian Emperor Ashoka. Buddhist pilgrims are often seen circumambulating the tree in devotional practices.

In the afternoon, head to Polonnaruwa, Sri Lanka's lovely medieval capital, with its well-preserved ancient dagobas, moonstones (features of Sinhalese architecture of ancient Sri Lanka), parks, and stunning carved statues. This compact ancient ruin, a World Heritage Site, dates from the late 10th century, when the Chola kings of southern India invaded Sri Lanka and conquered Anuradhapura. The invaders then moved their capital to Polonnaruwa for strategic reasons, but were ultimately forced out by the Sinhalese ruler Vijayabahu I. The Sea of Parakrama, a vast 12th century man-made reservoir created by King Parakramabahu I (1153-86) during Polonnaruwa's golden age, dominates the site, and small troops of monkeys patrol the wooded areas. Return to the hotel for dinner and overnight...BLD







## DAY 6 CAVE TEMPLES OF DAMBULLA / MATALE / KANDY

At Dambulla, you'll find five mystical cave temples dating from the first century BC. Hewn from a huge rock mass and adorned with frescoes, they sheltered King Walagamba during his 14 years of exile from Anuradhapura. When the king finally regained his throne in 89 BC, he ordered the caves painted with magnificent images, some depicting scenes from the Buddha's life and Sinhalese history. There is also a colossal figure of the recumbent Buddha carved out of the living rock, some 45 feet long. As you head to Kandy, visit the Aluwihare Heritage Centre in Matale, a crafts workshop once run by the late Ena de Silva, a renowned batik artist, social activist, and prominent Sri Lankan (her father was the first Inspector General of Police of post-independence Ceylon). After lunch, continue to Kandy, the hill capital and last stronghold of the Sinhala Kings, nestled in the splendor of hill country at 1,600 feet with a tranquil lake in its midst. This World Heritage Site retains an aura of grandeur and is a cultural sanctuary where legends, traditions, and folklore are lovingly kept alive. Kandy and its environs are the center of the island's handicraft

industry, which includes exquisite silver and gold jewelry and precious gems. Overnight at the Jetwing Kandy Gallery, beautifully set among the vivid green hills of Kandy...BLD  
Approximate driving time: 2.5 hours

## DAY 7 KANDY / TEMPLE OF THE TOOTH

This morning, explore Kandy's most famous site, the golden-roofed Temple of the Tooth, or Dalada Milgawa Temple, where a tooth of the Buddha is preserved. This 16th century temple is one of the most venerated places of worship and pilgrimage for Buddhists throughout the world, and is a World Heritage Site. You'll also visit the onsite Buddhist Museum, with its photographs and displays portraying the facets of Buddhism around the world. Afterwards, visit a cultural center where an ancient house of a village chief has been converted into an art center whose vast collections of furniture, art items, antique books, manuscripts, photographs, and postcards reflect the interests of its founder, Jacques Soulié, a French national who now calls Sri Lanka home. You'll join him for lunch and enjoy a discussion about the Kandy and Gampola kingdoms. Return to Kandy, with the





remainder of the day free to visit Kandy's markets on your own. In the evening at the hotel, there will be a traditional performance that includes "fire walking" ...BLD

#### DAY 8 TEMPLES OF PILIMATALAWA / NUWARA ELIYA

Head to Pilimatalawa, in the suburbs of Kandy, site of three temples dating from the 14th century. Upon arrival, travel by rickshaw to the first, Gadaladeniya, a hilltop temple believed to be built by South Indian artists. In its main shrine room is a large painted statue of the Buddha. Aboard your rickshaws, travel through local villages and paddy fields to Lankathilaka, a huge majestic temple believed to be one of the most magnificent—and best preserved—architectural structures in the Gampola kingdom. Built on a rock, you reach it by a series of rock-cut steps. Your final visit here is to Embekke, with its examples of fine woodcarvings of human figures, animals, and floral motifs. No metal is used throughout the structure—even the nails are made of wood. You may arrive in time for a pooja ceremony, a blessing that offers protection for travelers.

Continuing your journey, travel to Nuwara Eliya, in the heart of Sri Lankan hill country, whose rolling mountains are a carpet of velvety green tea plantations interspersed with

gushing streams and tumbling waterfalls. This is where the British built their homes in styles from Georgian to Queen Anne and landscaped them with rose gardens and well-kept lawns. Your accommodation is the nearby Heritage Tea Factory, a restored hotel set on a hillside with views of mountains and tea plantations where you'll enjoy High Tea... BLD

Approximate driving time: 3.5-4 hours (total)

#### DAY 9 TEA ESTATE HIKE / TRAIN TO ELLA / WELLAWAYA

Sri Lanka, formerly Ceylon, is one of the world's largest tea exporters. Tea was introduced to the island after 1868 when a blight destroyed most of the coffee plants and estate owners had to diversify. A Scotsman, James Taylor, with knowledge of tea cultivation in northern India, was in charge of the first sowing of tea seeds on 19 acres, and some of those bushes are still producing today. By 1873, Taylor's first Ceylon-grown teas sold for a very good price in London. Rapid expansion of Ceylon's tea industry in the 1870s and 1880s brought interest from the large British tea companies, which took over many of the small estates. In 1890, four estates were purchased by an Irish immigrant to America, Thomas Lipton, who had made a fortune in the grocery business. Tea was expensive for the



working class at that time, and Lipton introduced the concept of inexpensive tea leaves in a teapot-ready bag.

A morning hike brings you through tea plantations, where you can witness the local life of the tea picking community. At a tea factory, you'll see how the raw green leaf is converted to the familiar dark brown product through a process of drying, cutting, rolling, and fermentation. You'll also learn to "taste" tea and try to identify the subtle differences in flavor. After your visit, head to the train station to board the train that carries you to Ella, with a box lunch aboard the train en route. Ella is a lovely hill-country town, blessed with some of the most beautiful mountain views in Sri Lanka. Upon arrival, enjoy a brief sightseeing tour of the town, then proceed to your beautiful eco-lodge near the village of Wellawaya. Overnight at Jetwing Kaduruketha...BLD  
Approximate driving time: 2-3 hours (total)

#### DAY 10 WELLAWAYA

In the morning, take an optional bike ride with your Trip Leader past verdant rice paddies and farms. The afternoon is at leisure to relax. Dinner and overnight at hotel...BLD

#### DAY 11 ELLA / BUDURUWAGALA / YALA NATIONAL PARK

Today's journey begins with a visit to Buduruwagala, "the rock with the statue of Buddha," which you'll arrive at by tuk-tuk! Seven figures are carved in this rock, with a massive 51-foot Buddha statue at the center. Heading down to the coast, arrive in Yala National Park in time for lunch. Yala, a dune-covered scrub landscape on the south coast, is home to throngs of painted storks and troops of monkeys chattering in the trees. Elephants can be seen in the open, undulating terrain and recently the park has gained fame for its leopard research/conservation project. In the afternoon, enjoy a game drive at the park, then savor a special barbecue dinner in the evening. Overnight at Jetwing Yala, a beautiful hotel right next to the park...BLD  
Approximate driving time: 3 hours (total)

#### DAY 12 GALLE

A scenic morning drive brings you to the ancient seaside trading post of Galle on the southern tip of Sri Lanka. En route, stop for lunch at a place where you can see Sri Lanka's famous stilt fishermen. The fortified town of Galle was an essential port of call for Chinese, Persian, Arab, and Indian





traders. The Dutch built the Galle fort in 1663, and the British took it over in 1796. In the evening, enjoy a festive Farewell Dinner of seafood. Overnight at the Lighthouse Hotel, set on the beach on the outskirts of Galle...BLD  
Approximate driving time: 3 hours

### Optional Add-On

#### Private Tour of a Cinnamon Estate

Visit a cinnamon estate to learn about the process of producing true Ceylon cinnamon quills and extracting cinnamon oil. This is a private tour with the estate owners and includes snacks and tea at their estate house.

See "Trip Cost" section for additional costs

### DAY 13 GALLE / DEPART

The morning is free to enjoy the pool, ocean, and hotel facilities, or explore Galle on your own. Check-out time is at 12:00 pm (noon). Transfer to the Colombo Airport, a three-hour drive, and depart on homeward-bound flights. If you wish to extend your stay in Galle, we will be happy to make reservations for extra hotel nights...B\*

\*Please Note: Many flights depart Colombo in the early morning (1:00 am to 3:00 am). If your flight departs in the early morning hours of Day 13, you will transfer (approximately 3 hours) to the Colombo Airport just after the Farewell Dinner on Day 12, to connect with flights departing early morning on Day 13. However, if your flight departs later in the day on Day 13 (or in the early morning of Day 14), you will overnight in Galle on Day 12 and transfer to the Colombo Airport the following day.





# Trip Details

## DATE AND PRICING INFORMATION

### TRIP COST

**Prices are per person, valid through Spring 2025**

\$6,395 (5-6 members)

\$6,695 (3-4 members)

\$7,395 (2 members)

Single supplement: \$2,125

### TRIP COST INCLUDES

- Services of local guides
- Accommodations in hotels
- All meals included except 1 lunch
- Tea and coffee at all meals
- Ground transportation and entrance fees
- Airport transfers

### TRIP COST DOES NOT INCLUDE

International airfare, meals not specified after each itinerary day (B=Breakfast, L=Lunch, D=Dinner), airport departure taxes, optional tipping or gratuities to guides or staff, hotels en route to or on return from Colombo or additional hotel nights that may be necessitated by airline schedule changes or other factors, visa fees, cost of medical immunizations (if any), travel insurance, and other expenses of a personal nature (alcoholic beverages, soft drinks, bottled water laundry, etc.).

### SIGNING UP FOR A TRIP

Early reservations are recommended since many hotel rooms and airline seats sell out early. Please call 1-800-368-2794 and ask for our Asia Manager or email us at [asia@wildernesstravel.com](mailto:asia@wildernesstravel.com) with any questions that you may have about this trip. To make your reservation, you can call us and charge the initial \$600 deposit (per person) to your Visa, MasterCard, or American Express credit card or mail in a check with your request for reservations and preferred dates. Upon receiving your deposit, we will request your preferred dates. When they are confirmed, we will send you a confirmation packet including a Detailed Trip Itinerary, Trip

Application, travel insurance application, Departure Notes with clothing, equipment and suggested reading list, and an Arrival & Departure Logistics memo. If your requested dates are not available, the deposit is fully refundable. Please see our Cancellations & Transfers chart for all other fees. Each participant must submit a separate signed application prior to departure (we include this in your confirmation packet).

### PAYMENT SCHEDULE

At time of reservation: \$1,000

90 days prior to departure: Balance

### CANCELLATION AND TRANSFER FEE SCHEDULE

Minimum fee: \$1,000 per person

61-90 days prior to departure: 25% of trip cost

46-60 days prior to departure: 50% of trip cost

45 days or less: 100% of trip cost

\*Please note that this differs from our regular catalog departures.

### TRAVEL INSURANCE

We highly recommend you purchase travel insurance. You can take advantage of a comprehensive Travel Protection Plan designed for Wilderness Travel by Travelex, or purchase other insurance on your own. See our website for details:

<http://www.wildernesstravel.com/toucan/travel-insurance>



# Accommodations



## GALLE FACE HOTEL

*Colombo, Sri Lanka*

*Days 1 to 2 (2 nights)*

Combining old world charm and elegance with modern amenities, the historic Galle Face Hotel enjoys a wonderful location, right on the beach and facing the Galle Face Green, an urban park along the seafront. If you're a swimmer, you can get your laps in at the 30-meter-long saltwater swimming pool. After, sip a cocktail in the garden and watch the sun set over the Indian Ocean. And don't miss the hotel's own collection of historical memorabilia and artifacts.

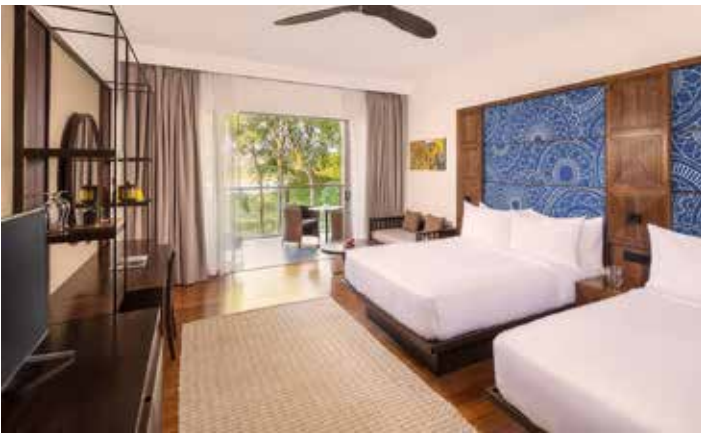


## ALIYA RESORT

*Sigiriya, Sri Lanka*

*Days 3 to 5 (3 nights)*

From this hotel, you'll enjoy breathtaking views of the verdant landscape and Sigiriya, or "Lion's Rock," an ancient palace once home to the king. Guestrooms are spacious and the art and decor are inspired by the Aliya, elephant. During our stay here, you'll have the opportunity to enjoy a BBQ in the gardens of the hotel.



## JETWING KANDY GALLERY

*Kandy, Sri Lanka*

*Days 6 to 7 (2 nights)*

This hotel is a tranquil oasis set by the waters of the Mahaweli River. We stay in elegantly appointed guest rooms offering two queen beds, all the modern amenities, and a personal butler. Enjoy breathtaking views of the Mahaweli River and the verdant mountains from either your balcony or veranda, take a swim in the infinity pool, relax with a soothing treatment at the hotel spa, or sip a sundowner at the spacious bar.



## HERITANCE TEA FACTORY

*Nuwara Eliya, Sri Lanka*

*Day 8 (1 night)*

This restored tea factory-turned-hotel makes for a unique stay in the hills above Nuwara Eliya. Its remote mountainside setting is a bit of an oasis, and offers views of lush tea plantations. While here, you can hike through tea plantations and enjoy High Tea.





## JETWING KADURUKETHA

*Wellawaya, Sri Lanka*

*Days 9 to 10 (2 nights)*

Set amid paddy fields and natural forest, Jetwing Kaduruketha is designed to nestle unobtrusively into the rural landscape. Its 25 chalets, spaced out over 60 acres, are simply crafted with bamboo and wood and feature a king-sized bed, en suite bathroom, and an open plan to offer an indoor and outdoor ambience (a roll-away bed will be provided for those needing a twin room). The resort's cuisine mixes fresh ingredients to produce traditional Sri Lankan curries as well as international menus. Meals can be enjoyed in the restaurant or on the outdoor terrace.



## JETWING YALA

*Tissamaharana, Sri Lanka*

*Day 11 (1 night)*

Facing Yala Beach and adjacent to Yala National Park, this 80-room hotel is an excellent base for game drives in search for painted storks and herds of elephants. With modern and colorful rooms, this hotel offers ample opportunities for relaxation, from a swing in a hammock to a refreshing dip in the swimming pool.



## LIGHTHOUSE HOTEL GALLE

*Galle, Sri Lanka*

*Day 12 (1 night)*

Listen to surf crash against the rocks at this luxurious oceanfront hotel designed by Sri Lankan architect Geoffrey Bawa. Each of the hotel's 85 rooms offers private balconies with views of the sparkling Indian Ocean. On the hotel grounds, you can enjoy a swim in one of three pools, a walk to a small accessible beach, or an after-dinner drink at The Coat of Arms Bar, decorated with antique flags.

These are our signature accommodations for this trip. Although it is highly unlikely, we may make substitutions when necessary. To see more photos and descriptions, please visit our *Sri Lanka Private Journey* webpage and click on "Accommodations."



# Arrival & Departure

Upon confirming your trip reservation, we will send you a Welcome Packet that includes a list of documents (passport, visas, etc.) required for your trip. Please feel free to call if you would like this information before making your air arrangements.

If you have booked extra services before or after the trip, an Extra Services Confirmation will be sent with your Final Documents.

## ARRIVAL & MEETING PLACE

Colombo, Sri Lanka

**Suggested Airport:** Bandaranaike International Airport (CMB)

**Suggested Date & Time:** Day 1, by 3:00 pm

**Meeting Place:** A complimentary transfer is provided from Bandaranaike International Airport to the Galle Face Hotel. A WT representative will meet you outside the customs area and will be holding a Wilderness Travel sign and/or a sign with your name on it. A Welcome Dinner and orientation meeting will take place in the evening of Day 1.

Many flights arrive in Colombo in the morning between 1:00 am to 6:00 am. Early check-in is available and your room will be ready for check-in no matter what time you arrive on Day 1.

## DEPARTURE

Colombo, Sri Lanka

**Suggested Airport:** Bandaranaike International Airport (CMB)

**Suggested Date & Time:** Day 13, anytime

On Day 13, Wilderness Travel will provide a complimentary departure transfer from the Lighthouse Hotel in Galle to Bandaranaike International Airport. This transfer can take three hours.

Many flights depart Colombo in the early morning (1:00 am to 3:00 am). If your flight departs in the early morning hours of Day 13, you will transfer to the Colombo Airport just after the Farewell Dinner on Day 12, to connect with flights departing early morning on Day 13. However, if your flight departs later in the day on Day 13 (or in the early morning of Day 14), you will overnight in Galle on Day 12 and transfer to Bandaranaike International Airport the following day.

## INTERNATIONAL AIR TRAVEL

You are responsible for making your own arrangements for flights to and from Asia.

There are many online consolidators for booking travel, but for more personal help arranging air transport, you can contact Exito Travel at 970-818-8459 in the US or Canada. They are very adept at putting flight itineraries together, to even the most far-flung places. More information can be found at [www.exitotravel.com](http://www.exitotravel.com).

Depending on your routing, it is necessary to depart from the US two days prior to Day 1 of the trip itinerary. The name on your airline ticket must match the name on your passport exactly, and your passport must be valid for at least six months after your date of return to the U.S.

**Please do not purchase your tickets until you are confirmed on the trip.** Once your tickets have been purchased, please send us a copy of your airline schedule so we can reserve your airport transfers. It is your responsibility to ensure your flight times coordinate with the arrival and departure logistics for this trip.

## EXTRA HOTEL NIGHTS

We are happy to arrange additional nights in Colombo or at trip's end in Galle. Please call for details.



# What the Trip is Like

## TRIP LEVEL

This trip is rated 2+, easy to moderate, with some optional short hikes and several nature walks at archaeological sites. Accommodations are in lovely hotels, including one night in a converted tea factory! Comfortable walking shoes are recommended and occasionally we must take off shoes to visit temples.

## WEATHER

Sri Lanka has a tropical climate with high humidity, tempered by sea breezes on the coast. The average temperature is about 81°F. In the highlands in places like Nuwara Eliya, it is in the 60s during the day and can get very cold at night, with lows in the 40s, so you'll need a sweater. Sri Lanka has two monsoon seasons. The southwest part of the island gets a monsoon between May and July while the northeast monsoon is December and January. Humidity is high year round and you can expect some rain showers most days.

## CHOOSING THE RIGHT TRIP

Adventure travel often involves exotic destinations, unusual levels of physical exertion, or activities you may not have participated in previously. We work hard to help you choose the right trip for you, paying attention to your individual interests, abilities, and needs. If you have questions about the level of comfort or any of the activities described in this itinerary, please call Wilderness Travel at 1-800-368-2794 and ask for the Asia Manager or email us at [asia@wildernesstravel.com](mailto:asia@wildernesstravel.com).

## REFERENCES

We'd be happy to put you in touch with a past client that has traveled with us on this or a similar trip.

## ABOUT PRIVATE JOURNEYS

Wilderness Travel Private Journeys are designed for people who want to travel with their own small private group, but who still want to experience the same superb itinerary design, great accommodations, and signature quality of Wilderness Travel's escorted group trips. These Private Journeys allow you to choose your own dates and your traveling companions—and enjoy the WT touch on all aspects of the journey.

## TOUCAN CLUB / TRAVEL AGENTS

Please note that travel agent commissions and Toucan Club discounts do not apply for our Private Journeys. However, your participation on these trips will count toward your Toucan discount on future departures of Wilderness Travel's regular expeditions. For more information regarding our Toucan Club bonus program, please visit our website at [www.wildernesstravel.com/resources/toucan-club/](http://www.wildernesstravel.com/resources/toucan-club/)

## VISIT OUR WEBSITE

At [www.wildernesstravel.com](http://www.wildernesstravel.com), you can book your trip online or find out about added departures, last-minute deals, and one-time Limited Edition adventures that aren't listed in our catalog. You can also access our complete library of detailed itineraries filled with enticing photos and videos, read bios of our Trip Leaders, find descriptions of trip accommodations, and check real-time availability of any trips that interest you.

Average Daily Max/Min °F												
	Jan	Feb	Mar	Apr	May	Jun	Jul	Aug	Sep	Oct	Nov	Dec
Colombo	86/74	87/76	88/78	88/79	87/80	86/80	85/80	85/79	85/79	85/78	85/77	86/76
Nuwara Eliya	66/48	68/48	70/50	72/52	70/54	64/54	64/54	64/54	64/52	66/52	66/52	66/52
Rainfall - Inches												
Colombo	3.3	2.5	4.5	10.0	13.2	7.5	5.1	3.8	6.2	13.9	12.1	6.0
Nuwara Eliya	3.8	2.3	2.6	5.3	6.0	6.0	6.1	5.3	5.3	7.3	7.6	6.0



# Travel Notes





## WILDERNESS TRAVEL HAS BEEN AWARDED:

**Best Travel Specialists in the World:** *Conde Nast Traveler*, 2024, 4-time winner

**World's Best Tour Operators:** *Travel + Leisure*, 11-time winner

**Best Wildlife, Hiking & Walking Trips:** *AFAR Magazine*, 3 years in a row

**Best Adventure Travel Companies:** *USA Today*

**Trip of the Year:** *Outside Magazine*, 9-time winner

**50 Tours of a Lifetime:** *National Geographic Traveler*, 9 years in a row

**Best Adventure Travel Companies:** *National Geographic Adventure*, 3-time winner

Please be advised that California has established a Travel Consumer Restitution Fund under the California Seller of Travel Law that took effect January 1, 1996. This fund is designed to protect consumers from unscrupulous practices by discount airfare ticket sellers or air charter operators. Unfortunately, this law does not cover non-California residents and, even in the case of California residents, it does not cover any foreign travel where the foreign "providers of transportation or travel services" are not in compliance with the Sellers of Travel Law (compliance being defined as registered as a Seller of Travel in California and a participant in the Travel Consumer Restitution Fund). Thus none of Wilderness Travel's tours qualify and we are required by law to advise each client that they are not covered by the California Travel Consumer Restitution Fund. California law requires sellers of travel to maintain a trust account or bond. This business has a trust account. California Seller of Travel #100769640

While as accurate as possible at the time of printing, this itinerary should be considered an approximate indication of the schedule and scope of activities and trip routing, rather than an inflexible schedule of events; it is subject to change due to circumstances beyond our control. This trip is subject to the Limitation of Liability and all the terms and conditions as detailed in the General Information section of the Wilderness Travel Catalog.

Revised: November 14, 2024 1:18 PM



1102 Ninth Street, Berkeley, CA 94710

800-368-2794 • 510-558-2488

[www.wildernesstravel.com](http://www.wildernesstravel.com) • [info@wildernesstravel.com](mailto:info@wildernesstravel.com)