

Searching for Snow Leopards in India

ON THE TRAIL OF THE GRAY GHOST OF THE HIMALAYAS



TRIP DATES

2025

March 12-23, 2025

2026

November 7-18, 2026

2027

March 5-16, 2027



Wilderness Travel

Searching for Snow Leopards in India

ON THE TRAIL OF THE GRAY GHOST OF THE HIMALAYAS

ITINERARY	3
TRIP COST, PAYMENT & INSURANCE	6
ARRIVAL & DEPARTURE	7
EXTEND YOUR ADVENTURE	8
ACCOMMODATIONS	10
TRIP LEADER	11
TRIP DETAILS	12
CONSERVATION INITIATIVES	13
TOUCAN CLUB	14

Track snow leopards in the Himalayas of Ladakh, the best place in the world to find these near-mythical cats in the wild. The prime season for sightings is winter, when high-altitude mountain goats descend to the valleys, bringing the cats with them. In the austere beauty of Ladakh's winter landscape, we head out with local Ladakhi trackers to search for the "gray ghost." We'll be based in a comfortable lodge at 13,000 feet in the village of Ulley, which has partnered with the Snow Leopard Conservancy to assure that by protecting their former adversary (the snow leopard), the local people generate income and benefits for the entire community. At journey's end, join our extension to Kanha National Park, India's most renowned Project Tiger reserve, with a stay in our award-winning lodge.



Wilderness Travel

1102 Ninth Street, Berkeley, CA 94710

800-368-2794 • 510-558-2488

www.wildernesstravel.com • info@wildernesstravel.com

Itinerary

DAY 1

DELHI

Arrive in Delhi, India, where you are met for a transfer to your hotel. At the hotel, you'll receive a traditional welcome garland while hotel formalities are completed. Overnight at the Andaz Delhi...meals on your own

We recommend arriving a day early to allow time to recover from jet lag. We are happy to arrange hotel nights in Delhi and transfers (an "on your own" expense).

DAY 2

LEH, LADAKH

A very early morning transfer brings us to Delhi's domestic airport for the one-hour flight to Leh, Ladakh's capital, set at 11,500 feet in the upper Indus Valley. It's a spectacular flight with great Himalayan views, including Nun Kun, a striking mountain massif with two distinct peaks: Nun (23,409') and its lower neighbor, Kun (23,218'). On arrival, we check into our hotel. We gather for our Welcome Dinner this evening. (Please note that no alcohol is served at the restaurant of the Grand Dragon Hotel in winter and this is our only dining option.) Overnight at the Grand Dragon Hotel...BLD

Leh: A ruined Tibetan-style fortress rises high above the ancient city of Leh, a former trans-Himalayan trading post in a valley of the Indus. Like Tibet, it is a remote enclave of Buddhism that has historically been difficult to reach and thus long remained quite separate from influences of the outside world. It was opened to outsiders for the first time in the 1970s. In the 17th century, under the rule of Ladakh's famous king, Singge Namgyal, Leh was a bustling trade center for merchants from all across Asia, who arrived with pony caravans laden with textiles, spices, and turquoise. The caravan journey was an arduous two-month trek between the Punjab, in India, and the Central Asian market towns of Yarkand and Khotan in China, with Leh the perfect midway point on the rugged crossing.



TRIP DETAILS AT-A-GLANCE

Length:	12 days
Arrive:	Delhi, India
Depart:	Delhi, India
Lodging:	6 nights mountain lodge, 5 nights hotels
Meals:	All meals included except 2 dinners (B=Breakfast, L=Lunch, D=Dinner)
Activity:	Cultural Adventures, Hiking / Trekking, Wildlife and Natural History
Trip Level:	1 2 3 4+ 5 6 Rugged road travel with occasional light hikes, cold weather in Ladakh, altitudes between 11,000- 14,000 feet, wildlife viewing by vehicle

HIGHLIGHTS

- Track snow leopard in the high Himalayas, supporting a community-based Himalayan wildlife conservation project
- Experience Ladakh's breathtaking landscapes and traditional Tibetan Buddhist culture
- Extend your journey to include Kanha National Park, known for tiger and leopard sightings



Itinerary (cont'd)

DAY 3

ACCLIMATIZATION / LEH PALACE / SHANTI STUPA

This is a crucial acclimatization day—we'll drink lots of water or tea and take a walk around Leh's bazaar. Later, we head out to the Sankar Gompa, a Buddhist monastery just outside Leh, where we'll climb the steps up to the assembly hall and view the interior walls, hand painted with vibrantly colored mandalas. Just before sunset, we visit the Leh Palace, a great spot from which to photograph the white-domed Shanti Stupa across the valley, illuminated by the rays of the setting sun. Overnight at the Grand Dragon Hotel...BLD



DAY 4

LEH / ULLEY

A drive of about three hours brings us out into the beautiful Indus Valley following a route along the Indus River. We'll pass through the small town of Nimmu, near the confluence of the Indus and Zaskar rivers, where in summer, irrigated fields produce a patchwork of wheat fields and fruit orchards. In winter, the surrounding mountains are sparkling with snow and the skies are usually clear. We also pass Likir, home to the Likir Gompa, known for its 75-foot-high statue of Maitreya, the Buddha-to-come, rising above terraced fields. Turning off on a dirt road, we head up a narrow valley following the Ulley Chhu (chhu means water), with our guides on the lookout for wildlife. This is excellent ibex country, and there are few more evocative sights than a magnificently horned male ibex standing vigil on an impossibly narrow outcrop.

Our accommodation, the Snow Leopard Lodge (13,000'), is located in Ulley, a hamlet of just about seven houses, beyond which are high summer pastures where yaks and dzo graze. It is the only purpose-built wildlife lodge in Ladakh and originated as a homestay property owned by one of Ladakh's top snow leopard trackers, Tchewang Norbu. The huge advantage of our lodge is that we don't have to camp in the cold winter weather, as required at Ladakh's other snow leopard tracking area, which is also becoming crowded with groups. It is a basic lodge, but significantly more comfortable than camping. We'll have a lounge area where we can savor hot tea as our naturalist leaders give talks and shows films on the wildlife of the Himalaya. Don't expect luxury, but the opportunity to be indoors makes a huge difference to your experience. With access to three different valleys, we'll be far from other travelers. This is one of the best areas in all Ladakh to see ibex, urial (wild sheep), wolf, red fox, bearded and Himalayan griffon vulture, and golden eagle.



Each day we explore and track in different valleys. We track mainly by vehicle, which allows us to cover a lot more ground than those who are hiking out of campsites. When we reach a possible sighting area, we hike up to ridgelines or high points for the best chances of viewing wildlife. Our trackers and spotters interact closely with the local people, using their network of sources to identify likely sites for snow leopard movement each day. Overnight at the Snow Leopard Lodge...BLD

DAYS 5-9

VALLEY / SNOW LEOPARD TRACKING

These thrilling days are spent tracking and photographing ibex, snow leopard, and other wildlife of the area. Each day will be unique, depending on the location of wildlife and other conditions. Just being in this remote mountain kingdom in winter is extraordinary. In general, our schedule will be as follows:

We get up in the morning by approximately 7:00 am and make a five-minute hike up a hill behind the lodge for spectacular views of the valley. Tea (or coffee and hot chocolate) will be delivered to us here while the trackers scope out the ridges for possible movement. After watching the sunrise over the Himalaya, we walk down to the lodge for breakfast around 8:30 am. Our Trip Leader will work together with the local trackers to discuss any snow leopard sightings in nearby valleys. The snow leopard has a distinct pattern of movement, which is closely monitored every morning. Based on current information from the trackers, we visit different valleys by vehicle. The roads are mostly paved, and we will hike from the vehicles to reach nearby ridges for the best chance of viewing the animals. We can accommodate different lengths of hikes. For the best sightings, you will need to hike to high points, but the trackers at the vehicles will have spotting scopes. Lunch will be at the lodge or in the field. We return to the lodge in the afternoon, with a talk in the sitting room over tea and coffee about the great creatures who inhabit this austere landscape and the measures being taken to ensure their survival. Dinners and overnights at the lodge...BLD each day

Note on Wildlife Viewing: Seeing a snow leopard in the wild cannot be guaranteed. They are wild and elusive by nature, with no fixed routine, and finding them requires not only the skill and patience of the trackers, but also considerable luck! Our trackers have had great success in past seasons, not only with snow leopard but also with Marco Polo sheep and Tibetan wolf.

DAY 10

LEH

We bid farewell to our game spotters and head back to Leh, arriving in the afternoon. Overnight at the Grand Dragon Hotel...BLD

DAY 11

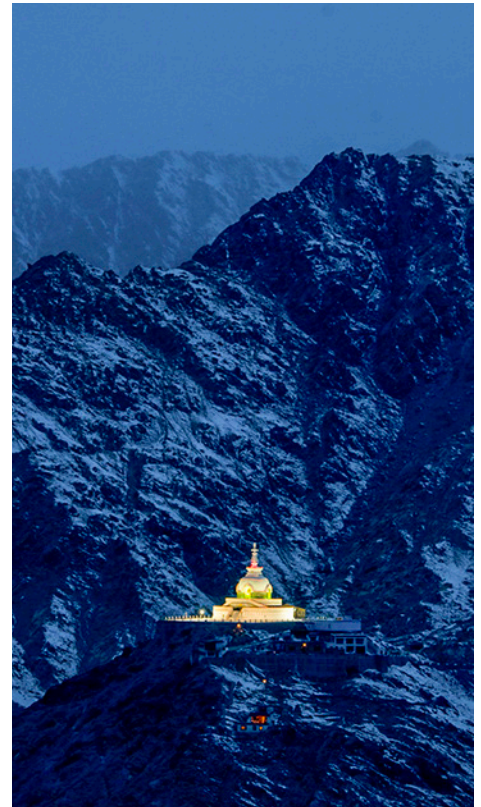
DELHI (OR JOIN OUR KANHA NATIONAL PARK TIGER EXTENSION)

A late morning flight brings us back to Delhi. For those doing our tiger-viewing extension to Kanha National Park, you will overnight in Delhi at the Andaz Delhi. For those not doing the extension, you can depart this evening after 10:00 pm, or spend the night and depart on Day 12 (all transfers are included to/from the Delhi airport)...BL

DAY 12

DEPART

Transfer to the airport and depart on homeward-bound flights (if you didn't leave the night before)...B



Trip Cost, Payment & Insurance

TRIP COST

Prices are per person, valid through Spring 2025

\$7,795 (8-14 members)

\$8,395 (4-7 members)

Single supplement: \$2,995

Internal airfare: \$485 (subject to change)

Special Note: Due to a limited number of rooms at the Snow Leopard Lodge, only two singles can be accommodated on this adventure.

Please call for future years' pricing.

To offer the lowest possible cost, our trips are priced according to the number of participants on the trip. All costs are per person, based on double occupancy. If you wish to have a single room, you must pay the single supplement fee. Please note that Wilderness Travel staff, or guests of Wilderness Travel such as travel writers, photographers, or leaders-in-training, are not included in the tier pricing count.

CURRENCY EXCHANGE RATE

Because the prices published for our program are set so far in advance of the trip dates, we are occasionally faced with exceptional cost increases and/or currency fluctuations that affect the actual cost of running the trip. In most years, no price changes are necessary. However, we do reserve the right to raise or lower the trip price if there is a significant change in costs or exchange rates. If this is the case, your final invoice will reflect the difference in trip cost.

TRIP COST INCLUDES

- Expert leadership of a Wilderness Travel Trip Leader and local guides
- Accommodations as noted
- All meals included except 2 dinners as indicated in the Detailed Itinerary (B=Breakfast, L=Lunch, D=Dinner)
- Ground transportation as noted, national park entry fees, monastery entry fees
- Airport transfers as noted

TRIP COST DOES NOT INCLUDE

International airfare, internal airfare, airport departure taxes, any meals not specified after each itinerary day, optional tipping or gratuities to leaders or staff, hotels en route to or on return from Delhi or additional hotel nights that may be necessary due to airline schedule changes or other factors, visa fees, cost of medical immunizations (if any), mandatory emergency medical evacuation insurance (required), and other expenses of a personal nature (alcoholic beverages, laundry, etc.).

PAYMENT SCHEDULE

At time of reservation	\$600
90 days prior to departure	Balance

CANCELLATION AND TRANSFER FEE SCHEDULE

Up to 91 days prior to departure: No Charge!
61-90 days prior to departure: 25% of trip cost
46-60 days prior to departure: 50% of trip cost
45 days or less: 100% of trip cost

MANDATORY EMERGENCY EVACUATION INSURANCE

Please note: Insurance for emergency medical evacuation is required for this trip. Wilderness Travel offers a comprehensive Travel Protection Plan through Travelex Insurance that meets this requirement. For more details, visit our website: www.wildernesstravel.com/insurance. Alternatively, you can purchase a different policy on your own, as long as it includes emergency medical evacuation coverage of at least \$250,000 per person. You can compare various options at www.insuremytrip.com.

Arrival & Departure

Upon confirming your trip reservation, we will send you a Welcome Packet that includes a list of documents (passport, visas, etc.) required for your trip. Please feel free to call if you would like this information before making your air arrangements.

ARRIVAL & MEETING PLACE

Andaz Delhi
Delhi, India

Date: Day 1
Suggested arrival time: afternoon

Suggested Arrival Airport
Indira Gandhi International Airport (DEL)

A complimentary transfer is provided from the Delhi Airport to the group hotel, no matter when you arrive. Our WT representative will meet you outside the Customs area and will be holding a Wilderness Travel sign. Check-in at the hotel begins at 2:00 pm. There are no scheduled activities on Day 1.

If you have booked extra services for early arrival, a voucher for your transfer and extra hotel nights will be sent with your final documents.

DEPARTURE

Andaz Delhi
Delhi, India

Date: Day 11, after 10:00 pm, or Day 12, anytime

Suggested Airport for Departure
Indira Gandhi International Airport (DEL)

A complimentary transfer is provided from the group hotel to the Delhi Airport, no matter when you depart. Check-out time from the hotel is 12:00 pm on Day 12.

If you are departing on a different day, extra hotel nights can be arranged at additional cost.

INTERNATIONAL AIR TRAVEL

You are responsible for making your own arrangements for flights to and from Delhi. Airlines with the most convenient schedules for this trip include:

Emirates

800-777-3999
www.emirates.com

Air India

800-223-2250
www.airindia.com

Etihad Airways

888-838-4423
www.etihad.com

Cathay Pacific

Phone: 800-233-2742
www.cathay-usa.com

British Airways

800-AIRWAYS
www.britishairways.com

Singapore Airlines

800-742-3333
www.singaporeair.com

There are many online consolidators for booking travel, but for more personal help arranging air transport, you can contact Exito Travel at 970-818-8459 in the US or Canada. They are very adept at putting flight itineraries together, to even the most far-flung places. More information can be found on Exito's website at www.exitotravel.com.

Depending on your routing, it is necessary to depart from the US one or possibly two days prior to Day 1 of the trip itinerary. We recommend you arrive at least one night early so that you have a full day to recover from jet lag. Extra hotel nights can be arranged (at extra cost). The name on your airline ticket must match the name on your passport exactly, and your passport must be valid for at least six months after your date of return to the US.

Please do not purchase your tickets until you are confirmed on the trip. Once your tickets have been purchased, please send us a copy of your airline schedule so we can reserve your airport transfers. It is your responsibility to ensure your flight times coordinate with the arrival and departure logistics for this trip.

Kanha National Park Tiger Extension

Kanha is one of the Indian subcontinent's greatest wildlife reserves and a great place in India to see the Royal Bengal tiger. Besides tigers, there are more than 200 species of birds and some 22 species of mammals in residence here. On guided excursions, explore by jeep through the park's bamboo thickets, dadar (plateau grasslands) and sal forests, which gave birth to Rudyard Kipling's classic *The Jungle Book*. Overnights are at Kanha Jungle Lodge.



DAY 11 DELHI

As part of the main trip, a late morning flight brings us back to Delhi. Transfer to the Andaz Delhi, where we enjoy lunch, then have the remainder of the afternoon on your own. Overnight at the Andaz Delhi...BL

Please Note: extra baggage, including your cold-weather gear, can be left at our hotel in Delhi and picked up upon your return, at the end of the trip.

DAY 12 KANHA NATIONAL PARK

In the morning, transfer to the Delhi airport for your flight to Raipur in central India. Upon landing, take a scenic drive of about five hours through a region of lush rice terraces below the Maikal Hills, the eastern spur of the Satpura Range, to Kanha National Park. Transfer to Kanha Jungle Lodge, set near the Mukki gate entrance to the park. Kanha is one of the oldest, largest, and most scenic national parks in India and an ideal habitat for both tigers and their prey. The lush sal and bamboo forests, grassy meadows, and ravines shelter a significant population of tiger, leopard, sloth bear, and Indian wild dog, to name a few of the species found here, along with fantastic avian life.

The Royal Bengal tiger, India's proud symbol and an integral part of Indian mythology and culture, is the big draw at Kanha, and Kanha is the best place in India to see them. Bengal tigers are solitary animals who hunt nocturnally, traveling long distances to feed on buffalo, deer, and other mammals. Female tigers have litters of two to six cubs, which they raise with little help from the males. Cubs begin to hunt when they are about 18 months old

and remain with their mothers for two to three years, after which they find their own territory. Kanha National Park is vast—350 square miles of mixed forests interspersed with meadows watered by perennial streams that provide a source of water for the wildlife. The park is particularly well known for its endangered swamp deer, also known as barasingha, found only at Kanha. They populate the large open tracks of grass amid the forests of teak and bamboo. Brought back from the brink of extinction, these handsome animals are a remarkable conservation success story for Kanha. On arrival, we'll enjoy a 4WD jeep safari with a resident naturalist and forest guide, returning to our lodge for dinner. Overnight at Kanha Jungle Lodge...BLD
Approximate driving time: 5 hours

Special Note: All National Parks in Madhya Pradesh (Central India) are closed on Wednesday afternoons, including Kanha, meaning game drives will not be available. If we are here on a Wednesday, we will enjoy activities at our lodge, including nature walks and cooking demonstrations, or visit a nearby school in the afternoon.

DAYS 13-15 KANHA NATIONAL PARK

Each day, our early morning wake-up call is a friendly knock on the door as coffee or tea is delivered to our rooms. The misty morning and sounds of birds calling make for an unforgettable start to the day. When dawn breaks, we head out on safari by 4WD jeep (hiking is not allowed in the national park), accompanied by a resident naturalist and park guides. Dawn is the best time to see wildlife, including tigers, and the light is absolutely beautiful at this hour. A picnic breakfast will be served al fresco in the field, after which we return to our lodge by late morning. In the middle of the day, the wildlife is not as easy to see, as most animals and birds rest and sleep during the hotter hours, so we enjoy time at camp for nature walks, visits to a nearby village or school, or participating in a cooking demonstration at the lodge. In the late afternoons, when it cools down, we head out again by 4WD vehicle, following tracks and rivers in search of tigers! Evenings are time for relaxed dinners and stargazing, as well as talks by our expert naturalist guide about efforts to ensure the survival

of this extraordinary creature, and recent developments in conservation and habitat protection. Overnights at Kanha Jungle Lodge...BLD each day

DAYS 16-17 DELHI / DEPART

On Day 16, we drive from Kanha to Jabalpur airport (approximately 5 hours) for our late afternoon flight to Delhi. You can depart this evening after 10:00 pm, or spend the night and depart on Day 17 (all transfers are included to/from the Delhi airport)...BL (Day 16) / B (Day 17)

2024-2025 EXTENSION COST

From \$2,595 per person, double occupancy

Solo Traveler: from \$3,850

Single supplement: \$485

Internal airfare: \$435 (subject to change)

Extension Cost

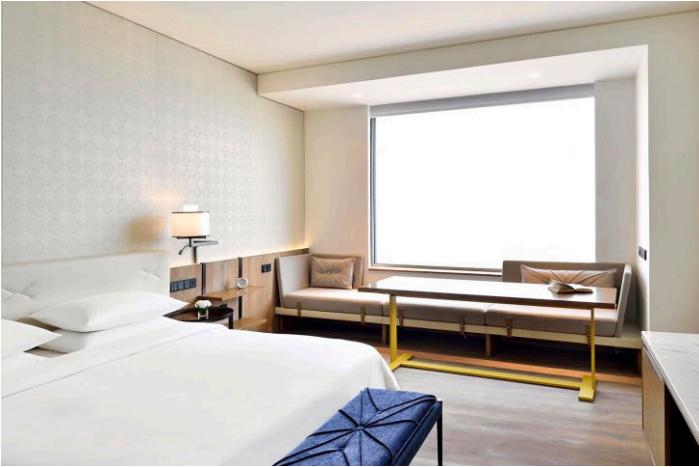
Includes: Services of local English-speaking guide; accommodations; all meals as noted; airport transfers; entrances to parks and sites as noted; bottled drinking water during drives and sightseeing; ground transportation.



Does Not Include: International airfare; hotel nights in Delhi or any other additional hotel nights that may be needed before or after your extension; airport departure taxes; any meals not specified after each itinerary day; gratuities to local guides, drivers, and transfer agents; pre-trip expenses of medical immunizations; visa fees (if applicable); travel insurance; any other expenses of a personal nature (alcoholic beverages, sodas, laundry, etc.).



Accommodations



ANDAZ DELHI

New Delhi, India

Day 1 (1 night), Day 11 (1 night)

Located just a few miles from the Indira Gandhi International Airport, you can watch the planes come and go from this contemporary city hotel. Grab a gin and tonic at the Juniper Bar (India's first gin bar), which offers 35 types of gin and tonic infusions, or if you feel like jumping into an even livelier scene, you can head to the multilevel Hong Kong Club for Cantonese food and a Chinese zodiac-inspired cocktail. The hotel restaurant serves a range of European and Indian food using locally-sourced produce, and there is a small café where you can get a seasonal salad or flavored flatbread. There is also a spa, fitness center, and an outdoor swimming pool.



GRAND DRAGON LADAKH

Leh, India

Days 2 to 3 (2 nights) Day 10 (1 night)

The Grand Dragon has well-maintained rooms with central heating and a great location just below Old Town, within easy walking distance of Leh's main bazaar. The balconies on each floor offer views across the Indus Valley.



SNOW LEOPARD LODGE

Ulley, India

Days 4 to 9 (6 nights)

This community-built lodge is located in Ulley (13,000'), surrounded by one of Ladakh's finest snow leopard habitats. Although the lodge is basic, it is cozy and offers a great alternative to camping in the cold winter weather. There is a kitchen where hot meals are prepared, a sitting room, five simple bedrooms, and two bathrooms. There are gas heaters available, and hot drinks and snacks are on offer to keep guests comfortable.

These are our signature accommodations for this trip. Although it is highly unlikely, we may make substitutions when necessary. To see more photos and descriptions, please visit our *Searching for Snow Leopards in India* webpage and click on "Accommodations."

Trip Leaders

Wilderness Travel Trip Leaders have a passion and a joy for creating an unforgettable journey. We are extremely proud of them and the incredible travel experiences they make possible. For more information, including client comments about them and which specific trips they will be leading, please visit our webpage and click on “Trip Leaders”: www.wildernesstravel.com/trip/india-ladakh-snow-leopard-wildlife-tour/



GULZAR HUSSAIN

Recently featured in Condé Nast Traveler as one of the “50 People to Know in the Himalayas,” Gulzar Hussain has an incredible knowledge and passion for the wildlife, history, and culture of his homeland in the Himalayas. With a bachelor’s degree in science and an MBA in tourism, he currently specializes in sustainable tourism planning and policy. He is the co-author of the book, *Journey through Paradise*, an in-depth guide to Kashmir, Ladakh, and Jammu, and is the founder of the Nomadic Center for Arts and Crafts in Puga Changthang. The Nomadic Center gives underprivileged, vulnerable, Nomadic children better access to health care and education, and involves them in creative arts and wildlife conservation projects. As a naturalist and guide, Gulzar loves sharing his passion for the remote, remarkable, and delicate ecosystem of the Himalayas with fellow adventurers. He enjoys photography and finds that his pictures help bring his stories to life during evenings spent around the camp fire.



ASHWIN H.P.

Ashwin has always been passionate about the natural world, especially elephants! He hails from Mysore, India, surrounded by forests on all sides, which made it easy for his forays to watch for animals and birds. He is also an avid photographer and has spent time making wildlife films. After working in research for many years, including base line studies of mammals in a tiger reserve and working with more than 20 villages on mitigating conflicts between humans and elephants, Ashwin now works actively as a naturalist. In the off season he continues to help his friends in filmmaking and also dabbles in research projects from time to time.



IRFAN HUSSAIN

Irfan Hussain’s character is deeply rooted in the captivating landscapes of Ladakh, India. As a trekking guide since 2016, he has spearheaded numerous treks and tours across the trans-Himalayan region, setting the stage for unforgettable experiences amid nature’s grandeur. From conquering the challenging Rumtse to Tso Moriri trek—characterized by seven pass crossings, ten river crossings, and campsites exceeding 16,000 feet—to summiting peaks like Stok Kangri six times and Kangyaste II three times, Irfan’s adventurous spirit knows no bounds.

Trip Details

WHAT THE TRIP IS LIKE

This trip is rated Level 4+, Moderate to Strenuous. In Ladakh, you'll be outdoors in cold winter weather during the day as you track snow leopards, but with proper winter boots and layers of clothing, you should be comfortable (a recommended list is provided in our Predeparture Booklet). When our trackers spot wildlife, we will hike varying distances to get the best views, and at high altitudes (14,000 feet or higher), hiking can feel strenuous. For your own enjoyment, we recommend you make a special effort to be in good physical condition. Our lodge is Ulley is simple but it is comfortable and heated (and a fantastic alternative to camping). For wildlife viewing in Kanha National Park (on the extension), all our safaris are by open 4WD vehicle (hiking is not allowed in the national parks), and we stay in top-notch wildlife lodges with all the comforts. In general, the most important requirements for this journey are a spirit of adventure and the understanding that you are visiting remote and fascinating regions of India.

Our rooms at the Snow Leopard Lodge are simple rooms with beds, sheets, and blankets. Some rooms do not have power outlets, but every room has a light. There is no running water at the lodge as pipes will freeze in the winter. Bathroom facilities have a toilet and bucket bath (hot water will be provided if you wish to bathe). Please be prepared for limited bathing.

A SPECIAL NOTE ON TRAVEL TO LADAKH

Ladakh is an exciting destination, and while tourism is growing, the infrastructure remains limited (particularly felt by travelers on the bumpy roads!). Essential requirements for travel in Ladakh are flexibility, a sense of humor, curiosity, enthusiasm about new peoples and places, and an openness to the unexpected.

WEATHER

While Ladakh's skies are often blue and sunny in winter, it is quite cold because of the high altitude (average 13,000-14,000 feet). Daytime highs in Ladakh in March average in the low 40Fs Fahrenheit, with average nighttime temperatures in the low 10Fs Fahrenheit. November temperatures average 40-60F in the daytime and 25-35F at night, but our lodge is heated. Ladakh is at high altitude, and the air is quite dry. There is always the possibility of snow. On our extension to Kanha, we expect temperatures to be warm to hot during the day (mid 70s-80s), dropping to much cooler at dawn, when a warm sweater or jacket will be in order for game drives. We don't expect rain to be a problem at Kanha, but there may be an occasional shower.

CHOOSING THE RIGHT TRIP

Adventure travel often involves exotic destinations, unusual levels of physical exertion, or activities you may not have participated in previously. We work hard to help you choose the right trip for you, paying attention to your individual interests, abilities, and needs. If you have questions about the level of comfort or any of the activities described in this itinerary, please call Wilderness Travel at 1-800-368-2794 and ask for the Asia Manager or email us at asia@wildernesstravel.com.

REFERENCES

We'd be happy to put you in touch with a past client that has traveled with us on this or a similar trip.

VISIT OUR WEBSITE

At www.wildernesstravel.com, you can book your trip online or find out about added departures, last-minute deals, and one-time Limited Edition adventures that aren't listed in our catalog. You can also access our complete library of detailed itineraries filled with enticing photos and videos, read bios of our Trip Leaders, find descriptions of trip accommodations, and check real-time availability of any trips that interest you.

Conservation Initiatives

PROTECTING SNOW LEOPARDS AND TIGERS

We are committed to environmentally conscious travel, and believe our journeys can help preserve the natural places and cultures we visit. On this itinerary we support two organizations in India.

Snow Leopard Conservancy India Trust

The land cost of this trip includes a \$250 per person donation to the Snow Leopard Conservancy India Trust (SLC-IT), an organization working in the Indian Trans-Himalaya for the conservation of the highly endangered snow leopard. The programs focus primarily on building local stewardship through community-based tourism, education, and research in Ladakh, where snow leopards and wolves, once disdained as pests and adversaries, are now considered Ri Gyancha or “ornaments of the mountains.” WT also contributes an additional amount to the organization to construct predator-proof corrals.

TOFTigers

TOFTigers (Travel Operators for Tigers) is a unique collective action initiative to save tigers and their forests across the Indian subcontinent. The organization campaigns for the restoration of forest patches, corridors, and wastelands that are supported by community-based organizations, NGOs, travel operators and providers, visitors, or wealthy philanthropists. Each of our travelers receives a [TOFT Tigers Traveler’s Code brochure](#) in their sign-up packet, and is given the opportunity to donate \$50 to the organization on their final invoice. WT, a member of the organization, also contributes funds to support the Village Wildlife Guardians program.

Toucan Club Rewards & Discounts



T-SHIRT FRONT



T-SHIRT BACK



PATAGONIA SYNCHILLA FLEECE VEST
PLUS INSULATED CAMELBAK WATER BOTTLE



PATAGONIA R1 PULLOVER

We are very proud to have one of the highest rates of repeat travelers in the business, and have established the Wilderness Travel Toucan Club to reward you for your loyalty. For more information, please visit the Toucan Club page of our website at www.wildernesstravel.com/toucan.

Here's how it works:

YOUR FIRST TRIP

As a first-time traveler, you receive a lightweight Wilderness Travel T-shirt and set of durable WT Luggage Tags. On subsequent trips, we're happy to send you a new WT T-shirt and set of Luggage Tags by request.

YOUR SECOND TRIP

A top quality Wilderness Travel insulated stainless steel water bottle by CamelBak and a cozy Wilderness Travel fleece vest by Patagonia (\$130 value).

YOUR THIRD TRIP

A versatile Wilderness Travel R-1 pullover by Patagonia (\$140 value).

YOUR FOURTH TRIP

Discounts on the cost of your trip begin! You receive a 4% discount on the tour cost.

FIVE AND MORE TRIPS

You receive a 5% discount on the base trip cost. On your sixth trip, you receive a 6% discount, and so on up to your 10th trip. The maximum discount is 10%, with a ceiling of \$500.

Note: Due to special pricing considerations, Toucan Club discounts do not apply to our Private Journeys or Special Events. However, your participation on these trips does count toward your Toucan discount on future departures of Wilderness Travel's regular adventures.

TERMS & CONDITIONS

Toucan Club travel discounts cannot be used in conjunction with any other discount, unless otherwise specified. Discounts are deducted from the base trip cost and shown on the final invoice. The base trip cost is the main land/tier cost and does not include single supplement fees, extensions, internal airfare, or other additional charges. Bonus gifts (T-shirts, luggage tags, vests, water bottles, and pullovers) will be mailed approximately three weeks prior to trip departure. Terms and conditions of Toucan Club bonuses are subject to change or cancellation at the discretion of Wilderness Travel, Inc.

Travel Notes



WILDERNESS TRAVEL HAS BEEN AWARDED:

Best Travel Specialists in the World: *Condé Nast Traveler*, 2024, 4-time winner

World's Best Tour Operators: *Travel + Leisure*, 11-time winner

Best Wildlife, Hiking & Walking Trips: *AFAR Magazine*, 3 years in a row

Best Adventure Travel Companies: *USA Today*

Trip of the Year: *Outside Magazine*, 9-time winner

50 Tours of a Lifetime: *National Geographic Traveler*, 9 years in a row

Best Adventure Travel Companies: *National Geographic Adventure*, 3-time winner

Please be advised that California has established a Travel Consumer Restitution Fund under the California Seller of Travel Law that took effect January 1, 1996. This fund is designed to protect consumers from unscrupulous practices by discount airfare ticket sellers or air charter operators. Unfortunately, this law does not cover non-California residents and, even in the case of California residents, it does not cover any foreign travel where the foreign "providers of transportation or travel services" are not in compliance with the Sellers of Travel Law (compliance being defined as registered as a Seller of Travel in California and a participant in the Travel Consumer Restitution Fund). Thus none of Wilderness Travel's tours qualify and we are required by law to advise each client that they are not covered by the California Travel Consumer Restitution Fund. California law requires sellers of travel to maintain a trust account or bond. This business has a trust account. California Seller of Travel #100769640

While as accurate as possible at the time of printing, this itinerary should be considered an approximate indication of the schedule and scope of activities and trip routing, rather than an inflexible schedule of events; it is subject to change due to circumstances beyond our control. This trip is subject to the Limitation of Liability and all the terms and conditions as detailed in the General Information section of the Wilderness Travel Catalog.

December 4, 2024 2:41 PM