

A close-up photograph of a large tortoise, likely a Galapagos tortoise, resting in lush green vegetation. The tortoise's head is the central focus, showing its wrinkled skin, small eyes, and a slightly open mouth. Its shell is visible above its head, showing the texture and color of the scutes. The background is filled with vibrant green leaves and plants.

Galápagos Adventure aboard the Passion

TRAVEL THE ENCHANTED ISLES ON AN ELEGANT YACHT



Wilderness Travel



Magic of the Galápagos on an Elegant Yacht!

Where in the world can you hike among giant tortoises in the morning, swim alongside playful penguins in the afternoon, then savor a tropical sunset from the deck of your yacht? In the magical Galápagos, Darwin's legendary islands. The wildlife of this supremely isolated archipelago evolved in an environment with no natural predators, so the animals have no fear of humans--you can walk right among nesting blue-footed boobies, giant marine iguanas, and sunning sea lions. An inquisitive Galápagos mockingbird might even land on the brim of your hat! To be this close to wildlife is a spine-tingling experience found only in Darwin's enchanted world.

With more than four decades of bringing travelers to the Galápagos, Wilderness Travel knows that the ultimate way to experience the islands is on a superb private yacht. For this truly delightful Galápagos adventure, we've chosen the magnificent mega-yacht *Passion*, which hosts just 14 guests and exudes comfort from every angle, from its immense sundeck (complete with a hot tub) to its amazing suites and staterooms. Journeying aboard the *Passion*, you'll arrive at a new island each morning and enjoy

a day filled with active hiking, snorkeling, and opportunities for kayaking. Because you're in a very small group, you'll have phenomenal access to the knowledge of your expert naturalist Trip Leader during hikes and over gourmet meals back on board as you discuss the day's adventures.



The triple-deck *Passion*, at 160 feet in length, was originally built as a private family yacht for a wealthy British industrialist, with handcrafted touches from marble bathtubs to teakwood decks. Other Galápagos yachts of this size carry up to 40 guests, but the *Passion* hosts just 14 in truly spacious splendor. Five ample staterooms have private bathrooms (four with bathtubs), and both the VIP and Master suites feature his-and-hers bathrooms with tubs.

You'll enjoy delightful meals on board, from breakfast on the sun deck to dinners in the formal dining room or al fresco on the upper deck. With a ratio of one staff member per guest, the service on the *Passion* is truly personal. So step aboard, unpack just once, and let us bring you the Galápagos the Wilderness Travel way!

What Makes WT's Galápagos Special?



SMALL YACHT TRAVEL: THE BEST WAY TO EXPERIENCE THE ISLANDS

The *Passion* is the ideal yacht for those who want to experience the Galápagos Islands in supreme comfort and style. Originally a private mega-yacht, she has been completely refurbished with airy deck spaces, multiple lounges, and seven cabins (two of which are luxurious suites). Aboard the *Passion*, you'll wake each morning with a new island to explore, and while you enjoy lunch al fresco on deck, we move to a second fascinating site for the afternoon. Traveling by boat gives you the greatest variety of wildlife, scenery, and certainly the best snorkeling sites.



ACTIVE ADVENTURES, WITH HIKING, SNORKELING, ZODIAC EXPLORATIONS, AND OPTIONAL SEA KAYAKING

We capture the wonder of Darwin's legendary archipelago on daily island hikes, and on snorkeling excursions that reveal sea lions, sea turtles, Galápagos penguins, marine iguanas, and a kaleidoscopic array of tropical fish (complimentary shorty wetsuits are provided for your use). Our Zodiac explorations bring you through tiny coves and into serene mangrove lagoons, and our yachts have sea kayaks on board, offering a wonderful opportunity for optional exploration.



OUR SMALL GROUPS ENSURE YOUR EXPERIENCE IS PERSONALIZED

We host just 14 guests on the *Passion*, with one staff member for every guest. You'll enjoy wonderful camaraderie, not only on shore excursions but also on board, and learn the fascinating natural history of the Galápagos on talks and walks with your Trip Leader. It's an experience not possible on the larger cruise ships.

EXPLORE AND LEARN WITH WORLD-CLASS TRIP LEADERS

Our Trip Leaders are the best and most experienced in the Galápagos. They are phenomenal teachers and delightful traveling companions with a gift for creating unforgettable experiences. Our guides enrich every aspect of your trip on daily island hikes, snorkeling adventures, and during their evening presentations on the islands' history and fascinating wildlife.



FRESH AND DELICIOUS ONBOARD CUISINE

Many of the ingredients used by our talented Galápagos chefs are locally sourced in the islands: bread comes from a women's co-op bakery, fresh vegetables are grown on an organic farm, juices are from locally grown fruits—even the ice cream comes from the Galápagos Cooking School! The varied menus range from savory fresh-caught fish to golden llapingachos (Ecuador's tasty potato pancakes).



OUR COMMITMENT TO CONSERVATION

We care deeply about the islands. Wilderness Travel is a proud founding member of the International Galápagos Tour Operators Association (IGTOA), dedicated to the preservation of these extraordinary islands and ensuring that tourism remains a positive force. We support the Galápagos Conservancy and the Charles Darwin Foundation, and our long-time partner in the islands, the Angermeyer family, has joined with WildAid to create the Galápagos Traveler Conservation Fund.



Galápagos Adventure

ABOARD THE PASSION

The 14-guest *Passion*, once the private yacht of a British industrialist, is today one of the most comfortable yachts in the Galápagos, with a panoramic sky lounge, nearly 2,000 square feet of teak decks, a 1:1 guest-to-crew ratio, and an inviting hot tub. Yachts this size usually take three times as many guests, but the *Passion* welcomes just a lucky 14, with five staterooms and two suites. Our 8-day cruises on this spacious vessel feature either the eastern or western islands, plus two nights pre-cruise in historic Quito with a private tour. No matter which trip you choose, you're in for one of the world's greatest natural history experiences with our fantastic naturalist guide as you hike, snorkel, and kayak in Darwin's enchanted world.

TRIP DATES

2025

April 3-12, 2025 *Eastern Islands*
April 10-19, 2025 *Western Islands*
May 1-10, 2025 *Eastern Islands*
May 8-17, 2025 *Western Islands*
Jul 3-12, 2025 *Western Islands*

2026

January 8-17, 2026 *Eastern Islands*
January 15-24, 2026 *Western Islands*
February 5-14, 2026 *Eastern Islands*
February 12-21, 2026 *Western Islands*
March 5-14, 2026 *Eastern Islands*
March 12-21, 2026 *Western Islands*
April 16-25, 2026 *Eastern Islands*
April 23-May 2, 2026 *Western Islands*
April 30-May 9, 2026 *Eastern Islands*
May 7-16, 2026 *Western Islands*

East vs West

We've designed our Galápagos itineraries to highlight the best islands of the archipelago, with in-depth explorations of the eastern or western islands—or combine both for the Ultimate Galápagos experience! The east and west have unique characteristics (see below), but no matter which journey you choose, you'll enjoy fascinating excursions on land, daily swimming and snorkeling, optional sea kayaking, and awe-inspiring wildlife encounters—sea lions, iguanas, boobies, frigatebirds, flamingos, finches, penguins, sharks, rays, majestic sea turtles, and of course, giant land tortoises!



EASTERN ISLANDS



DAY	ITINERARY IN BRIEF
Days 1-3	Quito / Baltra / Black Turtle Cove
Days 4-5	Genovesa / Bartolomé / Pinnacle Rock
Days 6-7	Rábida / Santa Cruz / Darwin Research Station
Days 8-10	South Plaza / Santa Fé / Española

The eastern islands are more mature and protected from the open-ocean currents, creating a safe haven for a wide variety of birdlife as well as endemic flora. These islands tend to be smaller than their western counterparts, with lots of flora to create a lush habitat for birds, including waved albatross, great frigatebirds, and elegant swallow-tailed gulls. We visit Isla Genovesa, where one of the only colonies of red-footed boobies exist, walk on red-sand beaches on Rábida, and see the iconic Pinnacle Rock on Bartolomé. In the highlands of Santa Cruz, you'll visit a giant tortoise reserve and breeding facility. The eastern islands' warm waters attract colorful reef fish, tiny Galápagos penguins, marine iguanas, and green sea turtles, and you're likely to see young sea lions and fur seals sunbathing on white sandy beaches.

WESTERN ISLANDS



DAY	ITINERARY IN BRIEF
Days 1-3	Quito / Santa Cruz / Darwin Research Station / Puerto Ayora
Days 4-5	Floreana / Punta Cormorant
Days 6-8	Isabela / Fernandina / Puerto Egas
Days 9-10	Santiago / Sullivan Bay / North Seymour

The western islands, famed for their dramatic volcanic landscapes, giant uplifted coral beds, and spectacular beaches, are younger, larger, and completely off-limits to day-trippers. Thanks to the upwelling of cool nutrient-rich waters from the open ocean, these islands are home to a vast array of marine diversity, from iguanas, sea lions, and fur seals, to Sally Lightfoot crabs—watching for large pods of dolphins and whales is a true highlight of this trip. On land, we'll meet giant tortoises in the wild, explore historic Post Office Bay and the pirate hideaways on Floreana, and hike across Isabela's stunning lava fields to a mangrove lagoon frequented by pink flamingos. On Fernandina, one of the most pristine places on the planet, expect sea turtles, countless marine iguanas, and a colony of endemic flightless cormorants.



Eastern Islands Itinerary

DAY 1 QUITO

Arrive in Quito, the charming capital of Ecuador nestled into the foothills of the Andes. A Wilderness Travel representative will meet you at the airport for a transfer to our historic boutique hotel set in the heart of the city's Old Town...Meals on your own

DAY 2 QUITO

Quito is brimming with art-filled cathedrals, cobblestone streets, lively squares, and a striking blend of architecture, and you'll enjoy its wonders on an afternoon walking tour with our expert guide. Highlights include the Plaza Grande, the ornate Presidential Palace, the monasteries of San Francisco and Santo Domingo, and the church of La Compania—a fusion of indigenous and European art made of intricate wood carvings, gold leaf adornments, and a dazzling ceiling. The city has one of the greatest colonial centers in all of South America—the United Nations declared Quito a World Cultural Heritage site in 1978 to assure its preservation. We'll also visit the famous colonial street, La Ronda, once the home of famous musicians, poets, and politicians who helped shape Quito's heritage in the 20th century. Lunch and dinner will be on your own and your guide will be happy to make recommendations depending on how fancy or local you wish to go. Overnight at hotel...B

DAY 3 GALÁPAGOS / BALTRA ISLAND / BLACK TURTLE COVE

An early morning transfer brings us to the airport for the flight to the Galápagos, 600 miles off Ecuador's coast. We arrive mid-morning and board the yacht in time for lunch on deck. After lunch, we will navigate to Black Turtle Cove, a large mangrove lagoon on the north coast of Santa Cruz Island brimming with pelicans and herons, while green sea turtles or golden rays may cruise right next to our Zodiac. Overnight aboard the Passion...BLD

DAY 4 GENOVESA ISLAND / PRINCE PHILIP STEPS

We travel to Genovesa (Tower) Island, landing at magnificent Darwin Bay, a flooded caldera. Here we enjoy a walk among its huge colony of photogenic red-footed boobies. After lunch, we arrive at El Barranco, also known as Prince Philip Steps for his visit here in 1964. Here, we'll have a chance to snorkel with colorful schools of fish and possibly green sea turtles before we climb up to a clifftop where frigatebirds and Nazca boobies nest...BLD

DAY 5 BARTOLOMÉ ISLAND / PINNACLE ROCK / SOMBRERO CHINO

En route to Bartolomé, we'll be on the lookout for tiny Galápagos penguins, the only penguin species that lives north of the equator. A hike to the top of the island offers us breathtaking views of Pinnacle Rock, the Galápagos' most famous icon. We'll take a Zodiac ride around this scenic setting, visiting the tiny island of Sombrero Chino, an eroded spatter cone. Lava formations are seen on the western side of the island, and the land is covered with sea lion colonies and marine iguanas. We'll also visit a white-sand beach where sea turtles nest...BLD

TRIP DETAILS AT-A-GLANCE

- Length:** 10 days
- Arrive:** Quito, Ecuador
- Depart:** Quito, Ecuador
- Lodging:** 7 nights aboard the Passion, 2 nights hotel
- Meals:** All meals included except 2 lunches and 2 dinners (B=Breakfast, L=Lunch, D=Dinner)
- Activity:** Sea Kayaking, Small Boat and Yacht Cruising, Snorkeling, Walking, Wildlife and Natural History
- Trip Level:** ① 2 3 4 5 6
City tour, daily hikes, snorkeling, optional sea kayaking

DAY 6 RÁBIDA ISLAND / SANTA CRUZ ISLAND

We'll take a panga ride and later hike along the shore of Rábida, the red island, and look for marine iguanas, blue-footed boobies, brown pelicans, noddy terns, and sea lions. On Santa Cruz, we visit a lagoon with greater flamingos, black-necked stilts, and white-cheeked pintails. Further inland, we find Cerro Dragon (Dragon Hill), a fantastic land iguana nesting site...BLD

DAY 7 EL CHATO TORTOISE RESERVE / CHARLES DARWIN RESEARCH STATION

From Puerto Ayora on Santa Cruz Island, we head up into the highlands. In contrast to the coastal region, the highlands have lush vegetation and forests due to the higher humidity. We'll visit El Chato Tortoise Reserve to search for these giant creatures in the wild, then head back to the coast to visit the Charles Darwin Research Station's tortoise-breeding facility. Established in 1959, the research station works closely with the Galápagos National Park Service to protect the islands. Here we'll see giant tortoise species from several different islands. They live in large, open semi-natural pens and ensure an easy view for visitors...BLD

DAY 8 PLAZA SUR ISLAND / SANTA FÉ ISLAND

Landing on one of the oldest docks in the archipelago, we head ashore on South Plaza (Plaza Sur). Huge seagoing marine iguanas roam the shores, and swallow-tailed gulls and red-billed tropicbirds are often found here. Later we land on a white beach on Santa Fé Island, where sea lions are usually resting, to look for the island's endemic species of land iguana, larger and yellower than land iguanas on other islands...BLD

DAY 9 GARDNER BAY / ESPAÑOLA ISLAND

Española, the southernmost island in the archipelago, has a high degree of species differentiation due to its remoteness. We explore Gardner Bay, which has an outstanding beach with sea lions, marine iguanas, and the intrepid Española mockingbird. Gardner Inlet is a good place for snorkeling with playful sea lions, and snorkeling at Osborn Inlet reveals great quantities of marine life. We also land at Punta Suarez and walk up to an amazing viewpoint of the island's famous blowhole, El Soplador, which shoots water as high as 75 feet in the air. One of the Galápagos' most spectacular birds, the waved albatross, with its seven-foot wingspan, nests on Española from April through December. Waved albatross are considered endemic not only to the Galápagos but also to this island...BLD

DAY 10 SANTA CRUZ ISLAND / QUITO / DEPART

We land on Santa Cruz Island at the town of Puerto Ayora, and after breakfast, bid farewell to our Trip Leader and crew, and disembark. En route to the airport, we make a short stop at Twin Craters (Los Gemelos), which are in fact not craters but magna domes that have collapsed. Continue to Baltra Airport, fly to Quito for departure on homeward flights, or extend your stay with one of our optional extensions....B





Western Islands Itinerary

DAY 1 QUITO

Arrive in Quito, where a Wilderness Travel representative meets you for a short transfer to the group hotel...Meals on your own

DAY 2 QUITO

Today, head out for a guided colonial city tour of Quito. The city has one of the greatest colonial centers in all of South America—the United Nations declared Quito a World Cultural Heritage site in 1978 to assure its preservation. Some highlights include the Main Plaza Grande, the ornate Presidential Palace, the monasteries of San Francisco and Santo Domingo, and the church of La Compania—a fusion of indigenous and European art made of intricate wood carvings, gold leaf adornments, and a dazzling ceiling. Lunch and dinner will be on your own and your guide will be happy to make recommendations depending on how fancy or local you wish to go. Overnight at hotel...B

DAY 3 GALÁPAGOS / SANTA CRUZ / DARWIN RESEARCH STATION

In the morning, we transfer back to the airport for the flight to the Galápagos, 600 miles off Ecuador's coast. We arrive mid-morning and make our way to the highlands for our first animal encounter—wild giant tortoises! After lunch on board, we head to the Charles Darwin Research Station in Puerto Ayora. Established in 1959, the Darwin Station works closely with the Galápagos National Park Service to protect the islands and surrounding marine reserve. The Darwin Station conducts research, assists other researchers within the park, and provides environmental education to communities and schools within the islands. At the Fausto Llerena Tortoise Breeding Center here, we'll see tortoises from different islands. After we explore charming Puerto Ayora, we'll be welcomed aboard our yacht. Overnight aboard the Passion...BLD

DAY 4 FLOREANA ISLAND / PUNTA CORMORANT / DEVIL'S CROWN / BLACK BEACH

We awake at Floreana Island, legendary homestead of infamous Baroness Eloise Von Wagner de Bousquet. Landing on the green-sand beaches of Punta Cormorant,

TRIP DETAILS AT-A-GLANCE

- Length:** 10 days
- Arrive:** Quito, Ecuador
- Depart:** Quito, Ecuador
- Lodging:** 7 nights aboard the Passion, 2 nights hotel
- Meals:** All meals included except 2 lunches and 2 dinners (B=Breakfast, L=Lunch, D=Dinner)
- Activity:** Small Boat and Yacht Cruising, Snorkeling, Walking, Wildlife and Natural History
- Trip Level:** ① 2 3 4 5 6
City tour, daily hikes, snorkeling, optional sea kayaking



we look for greater flamingos at a lagoon then walk to a powdery white-sand beach, nesting ground for turtles. We may visit Devil's Crown, an offshore remnant of a volcanic crater that's a haven for variety of fish, and sometimes rays and sea turtles. We also visit Floreana's Black Beach, where we learn about the intriguing human history of the island and its first inhabitants. Floreana was the first of the islands to be settled, since it has one of the few sources for fresh water. We head into the highlands to visit the Asilo de la Paz, the freshwater spring, as well as the caves that served as hideouts for pirates and where the first settlers established their camps...BLD

DAY 5 POST OFFICE BAY / CRUISE TO ISABELA

We visit post Office Bay and the historic Post Office Barrel, where in the 18th century, sailors left letters to be posted by passing ships. You can drop your own postcards here. In the afternoon, we cruise to Isabela Island and along the way, may see whales or dolphins. This evening, we'll enjoy a sunset dinner with extraordinary views of Isabela's dramatic volcanic landscape..BLD

DAY 6 ISABELA ISLAND / PUNTA MORENO / URBINA BAY

We wake up to panoramic views of Isabela, the largest island in the Galápagos. At Punta Moreno, we walk on a superb broken lava flow surrounded by giant shield volcanoes, hike to a lagoon where flamingos are usually present, and enjoy a snorkel nearby. We also visit Urbina Bay's black sand beach, a nesting site for green sea turtles, and take a brief hike inland in search of land iguanas and giant tortoises (seasonal)...BLD

DAY 7 TAGUS COVE, ISABELA ISLAND / PUNTA ESPINOSA, FERNANDINA ISLAND

We'll land at Tagus Cove, a historic pirate hideaway, and hike through beautiful landscapes to Darwin Lake, a saltwater

lagoon. We'll also take a panga ride (and maybe snorkel) to look for flightless cormorants, marine iguanas, and sea lions. We cross Bolivar Channel to Fernandina, one of the world's most unspoiled places, landing at Punta Espinosa for a stroll along the shoreline, on the lookout for a variety of wildlife... BLD

DAY 8 PUERTO EGAS / BUCCANEER COVE

At Puerto Egas, we disembark on a volcanic beach with an interesting history of human settlement. Galápagos sea lions lounge under arches of lava here. A panga ride takes us around the beautiful coastline to scenic Buccaneer Cove, so named because it was once a refuge for British buccaneers. We'll kayak along the coast and enjoy some snorkeling. We'll observe yellow warblers, unbelievably tame Galápagos flycatchers, and the ever-intriguing Darwin finches...BLD

DAY 9 SANTIAGO ISLAND / NORTH SEYMOUR

We head across to Sullivan Bay on Santiago for a chance to walk over recent lava flow, including pahoe-hoe lava formations and lava bubbles containing crystallized minerals and pioneer plants. Snorkeling along the shore here, we may find Galápagos penguins and herons. In the evening, we disembark on North Seymour, a small uplifted island, where we can walk right up to nesting colonies of frigatebirds, blue-footed boobies, and swallow-tailed gulls...BLD

DAY 10 MOSQUERA ISLET / BALTRA ISLAND / DISEMBARK / QUITO / DEPART

Time permitting, we'll visit Mosquera, a small islet that is home to a large sea lion colony. Continue to Baltra Airport, fly to Quito for departure on homeward flights, or extend your stay with one of our optional extensions....B



"This trip was wonderful. The ship staff were exceptional in their service, professionalism, and interaction with the tour members. The *Passion* was comfortable, larger than expected and exceptionally clean."

-Mary Lou B., Moraga, CA



Our Elegant Yacht: the *Passion*

ONE OF THE MOST MAGNIFICENT YACHTS IN THE ISLANDS

Originally an exclusive family yacht, the *Passion* has been adapted for cruising the Galápagos in chic, sophisticated style—it's the perfect combination of luxury and simplicity. Boats this size usually take three times as many passengers, but the *Passion* welcomes just 14 lucky guests. If you want to experience the islands in style, this is the way to go! The *Passion* meets the highest environmental and cruising standards, and her ship amenities are superb.

LIFE ABOARD THE *PASSION*

The original name of the *Passion* was Bellissima ("gorgeous" in Italian), and with one step aboard, you'll understand why. Beautifully furnished public areas include a panoramic sky lounge and bar, and nearly 2,000 square feet of wonderful teakwood decks with multiple places to lounge, including a secluded sun deck with an inviting hot tub for relaxation. Gourmet meals prepared by a creative culinary team are served in the formal dining room or al fresco on the upper

deck—one of the delights of traveling by boat. Stabilizers minimize motion at sea so you can enjoy a most comfortable ride. And with a 1:1 passenger-to-crew ratio, you're ensured of personalized, first-class service throughout your cruise.

ACTIVE EXPLORATION

Your days are filled with fun—and utterly delightful—discoveries. Nature walks led by your expert naturalist guide lead to shorelines where marine iguanas congregate and to colonies of nesting frigatebirds, while snorkeling excursions introduce you to the denizens of the underwater realm—colorful tropical fish, massive sea turtles, playful sea lions, and Galápagos penguins. The fleet of on-board kayaks offers a great way to explore the rugged coastlines and hidden bays (and no previous experience is needed!), while Zodiacs provide a front-row seat for exploring mangrove estuaries and below rocky cliff faces filled with nesting birds. Shorty wetsuits (3 mm neoprene) and snorkeling gear are available for snorkeling excursions.



PRE-CRUISE ACCOMMODATION

Hotel Patio Andaluz or La Casona de la Ronda

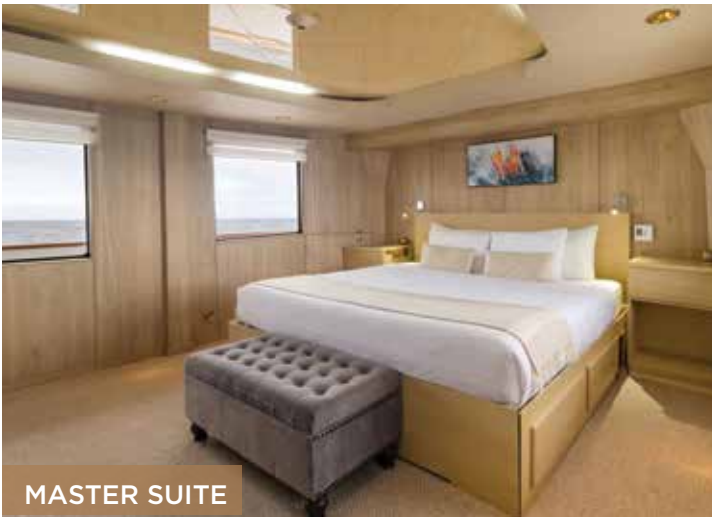
Quito, Ecuador Days 1-2 (2 nights)

These boutique hotels are both located in Quito's Old Town, just steps from major attractions, and are a wonderful introduction to the historic city of Quito. Guest rooms are comfortable with nice beds, bathrooms with hot showers, and in-room air-conditioning and WiFi.

The *Passion*: Deck Plan

ELEGANT STATEROOMS—AND TWO SUITES!

The *Passion* is fully air conditioned throughout, and each of the seven cabins also offers individually controlled air conditioning. The cabins include an en suite bathroom with bathtub and hot shower (stateroom 5 has a shower only), hair dryer, and USB charger. Of the five staterooms, one features a king bed (that can be converted to two twin beds), one features a queen bed, one has two twin beds, while two others offer one full and one twin bed each. The two spacious suites have a king-sized bed, and his-and-hers bathrooms.

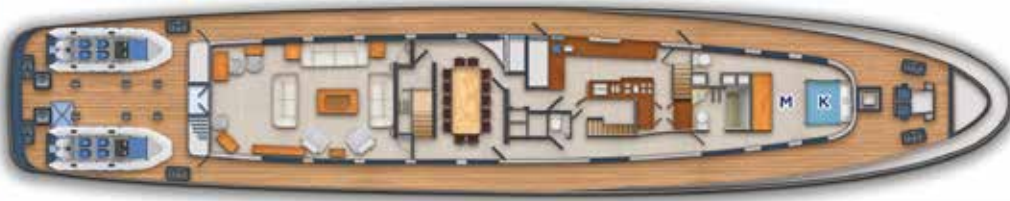


SKY DECK



M Master Suite
V Vip Suite
1 Stateroom 1
2 Stateroom 2
3 Stateroom 3
4 Stateroom 4
5 Stateroom 5

MAIN DECK



K King Size bed
Q Queen Size bed
F Full Size bed
T Twin Size bed
S Sofa bed

CABIN DECK



The *Passion*: Cabins



SUITE BATHROOM

MASTER & VIP SUITES

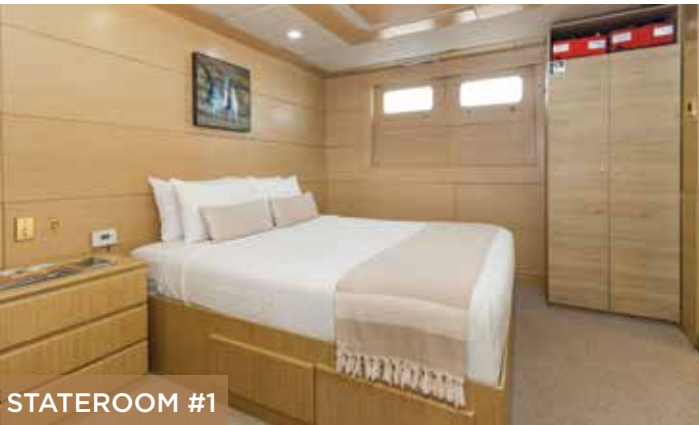
The Master & VIP Suites each have king size beds, AC, hair dryers, High Definition TV system, 110v to 220v outlets, USB charger and private marble bathroom with bathtub per room.

- **Master Suite:** king bed, max 2 guests
- **VIP Suite:** king bed plus daybed, max 2-4 guests (2 adults plus 1-2 children)

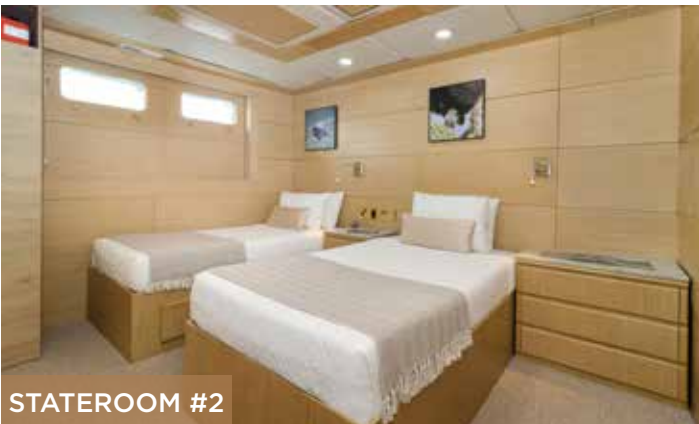
STATEROOMS

Each of the five ample staterooms has AC, hair dryers, High Definition TV system, 110v to 220v outlets, and USB charger. Staterooms 1-4 have a private marble bathroom (with bathtub). Stateroom 5 has a private bathroom with shower. Beds are either king, queen, twin, or full.

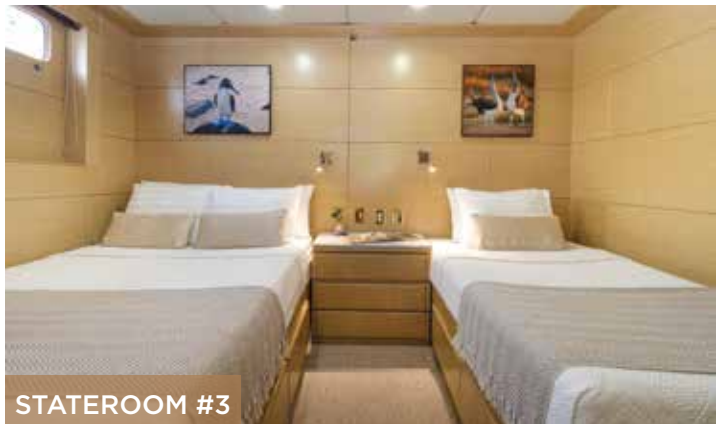
- **Stateroom 1:** queen bed, max 2 guests
- **Stateroom 2:** 2 twin beds, max 2 guests
- **Stateroom 3:** full bed and twin bed, max 3 guests
- **Stateroom 4:** full bed and twin bed, max 3 guests
- **Stateroom 5:** king bed or 2 twin beds, max 2 guests



STATEROOM #1



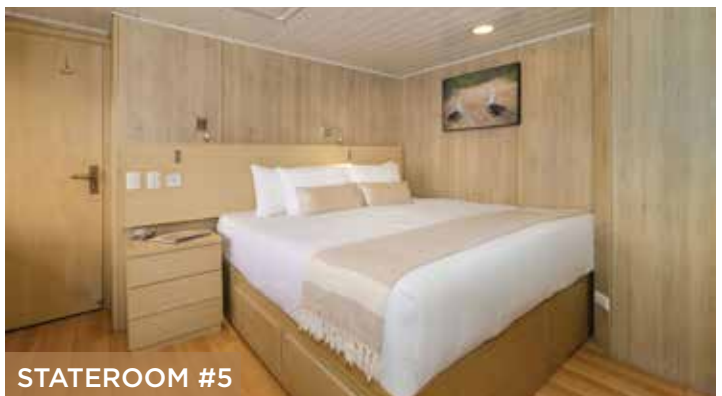
STATEROOM #2



STATEROOM #3



STATEROOM #4



STATEROOM #5

Pricing

TRIP COST

Prices are per person, valid through 2025. Call for 2026

Categories	Price
Stateroom (per person)	\$9,595
VIP/Master Suite (per person)	\$10,595
Internal airfare: \$595 (subject to change)	
Galapagos park fee and transit card (subject to change): \$220	
Single supplement: Call for details	
Discounts for children: Call for details	

TRIP COST INCLUDES

- Expert leadership of a Wilderness Travel Trip Leader and local guides
- Accommodations at the hotel in Quito and aboard the yacht
- All meals included except 2 lunches and 2 dinners as indicated in the Detailed Itinerary (B=Breakfast, L=Lunch, D=Dinner)
- Airport transfers as indicated
- Use of kayaks, snorkel gear (masks, snorkels, and fins), and shorty wetsuits (3mm)

TRIP COST DOES NOT INCLUDE

International airfare, internal flights, Galápagos park fee, any meals not specified after each itinerary day, airport departure taxes, optional gratuities (tipping your Trip leader, yacht crew, and local guides is customary, but at your discretion), additional hotel nights (due to airline schedule changes or other factors), pre-trip expenses such as medical immunizations (if any), travel insurance, passports and visas, or other expenses of a personal nature (alcoholic or bottled beverages, laundry, and so on).

PAYMENT SCHEDULE

At time of reservation: \$1,000
150 days prior to departure: 50% of trip cost
100 days prior to departure: Balance

Please note that this differs from our standard policy

*CANCELLATION AND TRANSFER FEE SCHEDULE

Minimum fee: \$1,000 per person
91-150 days prior to departure: 50% of trip cost
90 days or less: 100% of trip cost

Please note that this differs from our standard policy

FUEL SURCHARGES

Because the prices published for our program are set so far in advance of the trip dates, we are occasionally faced with exceptional cost fluctuations due to increase in fuel costs that affect the actual cost of running the trip. In most years, no price changes are necessary. However, we do reserve the right to raise or lower the trip price if there is a significant change in costs. If this is the case, your final invoice will reflect the difference in trip cost.

MANDATORY EMERGENCY EVACUATION INSURANCE

Please note: Insurance for emergency evacuation is required for this trip. Call for more details.

Arrival & Departure

Upon confirming your trip reservation, we will send you a Welcome Packet that includes a list of documents (passport, visas, etc.) required for your trip. Please feel free to call if you would like this information before making your air arrangements.

ARRIVAL & MEETING PLACE

Hotel Patio Andaluz
Quito, Ecuador

Date: Day 1

Suggested arrival time: anytime (hotel check-in is at 2:00 pm), flights typically arrive in the late evening.

Suggested Arrival Airport:
Quito (UIO), Ecuador

Upon arrival, you will be met by a representative (as you exit Customs) for transfer to the hotel.

DEPARTURE

Quito, Ecuador

Date: Day 10

Suggested departure time: anytime after 10:00 pm

Suggested Airport for Departure
Quito (UIO), Ecuador

On Day 10, our trip ends with the return flight from the Galápagos to Quito, which typically arrives in the late afternoon.

We are happy to add an extra night for you at the Wyndham Quito Airport Hotel if needed.

EXTENSIONS

We recommend adding extensions after the cruise (post-trip).

INTERNAL GALÁPAGOS FLIGHTS

Your internal round-trip flights to/from the Galápagos will be issued and distributed by our local agent in Ecuador (the airfare will appear on your final Wilderness Travel invoice).

INTERNATIONAL AIR TRAVEL

Trip members are responsible for making their own international air arrangements to and from Latin America. The following carriers typically have the most convenient schedules for this tour:

United Airlines

800-864-8331
www.united.com

Delta Airlines

800-241-4141
www.delta.com

American Airlines

800-433-7300
www.aa.com

LATAM Airlines

866-435-9526
www.latamairlines.com

There are many online consolidators for booking travel, but for more personal help arranging air transport, you can contact Exito Travel at 970-818-8459 in the US or Canada. They are very adept at putting flight itineraries together, to even the most far-flung places. More information can be found on Exito's website at www.exitotravel.com.

The name on your airline ticket must match the name on your passport exactly, and your passport must be valid for at least six months after your date of return to the US.

Please do not purchase your tickets until you are confirmed on the trip. Once your tickets have been purchased, please send us a copy of your airline schedule so we can reserve your airport transfers. It is your responsibility to ensure your flight times coordinate with the arrival and departure logistics for the trip.

Extend Your Adventure

To help you make the most of your adventure, we've created several exciting trip extensions. For detailed information, including full itineraries and complete pricing, please visit our webpage and click on "Extend Your Trip":

www.wildernesstravel.com/trip/ecuador/galapagos-islands-active-cruise-passion



AMAZON RAINFOREST EXTENSION: NAPO WILDLIFE CENTER

Enjoy an unforgettable adventure at Napo Wildlife Center for the best experience of the Ecuadorian Amazon. Explore by dugout canoe on blackwater lakes, hike trails through the emerald forest, visit the nearby clay lick where hundreds of parrots and macaws gather, get a bird's-eye view from the canopy tower (207 steps!), with its unobstructed 360-degree view of undisturbed forest. NWC is owned by the native Yasuní people, who have lived in this area for centuries. They have a profound respect for maintaining the natural integrity of the ecosystem and are knowledgeable and passionate guides who enhance your experience. Guest cabins are very comfortable and the buffet-style meals in the dining room provide tasty, fresh, and plentiful meals with a good variety to choose from. Our extension has three nights at Napo Wildlife Center and two in Quito, but you have the option to add additional nights.

6 days. From \$2795.



HACIENDA ZULETA AND OTAVALO EXTENSION

A stunning boutique hotel and working farm, Hacienda Zuleta is in an exquisite setting at 9,000 feet in the Ecuadorian Andes. The 19-room estate has 11 private rooms available to guests, each with hand-embroidered linens and beautiful garden views. With its wonderfully remote ambience, famous hospitality, and beautiful rural surroundings, Zuleta offers an authentic experience of the Ecuadorian highlands. Today the working farm produces a wide range of products including milk, cheese, quinoa, potatoes, and organic vegetables. Of special interest to many guests are the hand-embroidery workshop (optional tour at extra cost), condor rehabilitation project, trout farm, and cheese factory. Outside Magazine named Zuleta one of the world's "Top Ten Finds." After your stay at the hacienda, enjoy a tour of the famous market in the village of Otavalo, visit the workshop of a master weaver in Agato, and, time permitting, visit the colonial town of Cotacachi, famous for its leatherwork and views of deep-blue Cuicocha lagoon, a sacred crater lake.

4 days. From \$1895.

Cusco & Machu Picchu Extension

Discover the best of Peru's breathtaking mountain landscapes, mystical fortress-cities, and thriving cultural and artistic heritage on this extension that brings you to the heart of the Incan empire. You'll explore the beautiful Urubamba Valley, sacred to the Incas and home to the stupendous ruins of Písac and majestic Ollantaytambo, experience two days at glorious Machu Picchu, the iconic "Lost City of the Incas," and enjoy an insider's walking tour of Cusco, the ancient heart of the Inca Empire, and nearby Inca sites including awe-inspiring Saqsayhuaman, the majestic fortress overlooking Cusco.

DAYS 1-3 LIMA / CUSCO / URUBAMBA VALLEY / PISAC / CHINCHERO / OLLANTAYTAMBO

Arrive in Lima, Peru, and fly to Cusco (11,200'). Drive through the Urubamba Valley to visit the ruins of Pisac, well known for the Inca-built terracing that sweeps around the mountain spur on which the ruin is perched. Also visit Chinchero, an old colonial settlement built upon Inca foundations, and Ollantaytambo, a living Inca village, virtually unchanged from ancient times.

DAYS 4-5 MACHU PICCHU / CUSCO Board the morning train with your guide for a short ride through the Urubamba Valley to Machu Picchu. At the Machu Picchu station, head up to the ruins by bus and explore the sanctuary on an afternoon tour, visiting the reconstructed ruins of staircases, altars, temples, and fountains and enjoying the incredible setting. Explore the wonders of Machu Picchu the next morning, then board your afternoon train to Cusco.

DAYS 6-8 CUSCO / LIMA / DEPART

Enjoy a private guided walking tour of Cusco, including the spectacular Inca ruins on the hills overlooking Cusco, and an extra day for independent exploration, taking in the delightful blend of Inca and colonial architecture, the abundance of artisan and craft boutiques and wide variety of wonderful restaurants and street cafes, all with a welcoming atmosphere. On Day 8, depart for Lima and connect with onward flights.

2025 EXTENSION COSTS

From \$4,995 per person, double occupancy

Solo Traveler: from \$6,695

Single supplement: \$975

\$1000 non-refundable deposit per person

Seasonal & Holiday Surcharge: Call for Details

Optional Hotel Upgrades: Call for details



Trip Leaders



BITINIA ESPINOZA

Bitinia Espinoza has been guiding groups to the Galápagos and throughout Ecuador since 1991. She graduated from the University of Guayaquil with studies in natural history. Her travels on the lecture circuit on behalf of the Galápagos National Park and the Charles Darwin Research Station have taken her to the US and other regions. Bitinia lives in Quito with her two daughters and three grandchildren.



CECIBEL GUERRERO

When you grow up in one of the most diverse and extraordinary places on earth, it seems only right to invest your time and energy in keeping that place special, and Cecibel “Ceci” Guerrero is no exception. Originally from Ecuador, Ceci guided in the Galápagos from 1993 to 2001. After taking a short break to start a family, she returned to the Galápagos in 2008 to continue her work, obtaining her license as a Level III Naturalist Guide by the Galápagos National Park Service and the Charles Darwin Research Station.



RAFAEL PESANTES

Rafael Pesantes is a native Galápaguano, with more than three decades of experience as both a certified Galápagos guide and world naturalist. His achievements are inspiring, including the Prince Henri Award for Excellence by the Charles Darwin Research Station and HRH Crown Prince Henri of Luxembourg Award for excellence in guiding. Along with local qualifications, he led a joint research project with California’s Point Reyes Bird Observatory in the Farallon Islands on local bird life. He is an excellent guide who loves sharing his passion for the Galápagos. “The Galápagos is not just my home, it’s where my heart is,” he says. “I love helping people discover the magic and beauty of this archipelago, so they return home with lasting memories.”



SILVIA VARGAS

Silvia Vargas is in love with the Galápagos Islands and has been since high school, when she first visited from her hometown of Guayaquil, Ecuador. Her passion for the islands drew her back to live in the Galápagos where she works as a certified naturalist—the perfect job for someone with such deep knowledge and a generous spirit. Exploring the same islands over and over?—it’s a dream for this Trip Leader. “The wildlife here has to adapt to weather so variable,” Silvia notes, “it’s fun to see how each species figures it out.”



FERNANDO ORTIZ

Fernando Ortiz first came to the Galápagos in 1997 as a scuba instructor, also becoming part of Ecuador’s first underwater video production team. Joining the Galápagos National Park Service, he managed various marine conservation projects around the islands, then later worked for the non-profit Conservation International as coordinator of their Galápagos program. He has also been race team manager of the Galápagos Challenge, the largest annual athletic event in the islands. As a full-time naturalist guide for the last decade, Fernando takes delight in introducing visitors to the famous wildlife, in interpreting the natural processes that take place on land and underwater in the islands, and in ensuring that visitors return with a true appreciation of these magical islands.



When To Go? Any Time Of Year!

The Galápagos Islands' geographical location right on the equator make for minimum temperature variations through the year, and there is no “wrong” time to visit, but there are two general seasons.

DECEMBER TO MAY

The water and the air temperatures are warmer during this season and skies are generally sunny, but this is the also wet season, with short periods of light drizzle almost daily. The warmer and calmer water makes snorkeling ideal at this time of year. It is also the courting and mating season, so you'll be able to see the land birds in their fascinating displays and rituals. Sea turtles nest on the beach in this season, land iguanas are hatching, marine iguanas become brightly colored, and male sea lions spar with each other over females (and you may see newborn pups). This is also the time of colorful flowers on many islands.

JUNE THROUGH NOVEMBER

As the cold Humboldt Current arrives, the waters become colder and less calm but are richer in nutrients, attracting seabirds and a rich array of fish. It is easy to spot penguins at this time, as they are attracted to the cool waters and plentiful fish. Flightless cormorants perform their nesting rituals, the frigatebirds sport bright red pouches, the waved albatross nests on Española Island, and the blue-footed boobies do their famous “sky pointing” dances. Galápagos hawks court on Española and Santiago, and whales and dolphins are more likely to be observed particularly off the coast of Isabela Island.

CLIMATE IN BALTRA												
	JAN	FEB	MAR	APR	MAY	JUN	JUL	AUG	SEP	OCT	NOV	DEC
Air Temperature	77°F	78°F	83°F	83°F	77°F	72°F	75°F	70°F	70°F	71°F	73°F	74°F
Water Temperature	76°F	77°F	77°F	77°F	76°F	73°F	71°F	70°F	71°F	72°F	73°F	74°F
Monthly Rainfall	2.4 in	4.6 in	4.0 in	3.0 in	0.6 in	0.2 in	0.3 in	0.2 in	0.2 in	0.2 in	0.2 in	0.3 in

What the Trip is Like

WHAT THE TRIP IS LIKE

The trip is rated Level 1+. Trips that are rated 1 have optional walks and little elevation gain or loss. The + indicates that this trip is a bit more strenuous than other trips of this level. Our Galápagos journey is appropriate for anyone in good health who is physically active and enjoys regular moderate walks and hikes, but please consider the following factors when choosing this trip:

HIKES

The daily hikes are not long (up to 3 miles) but often involve uneven ground, either on dry lava, which can be quite sharp, on rocky trails with uneven surfaces, or on sandy beaches.

SHORE EXCURSIONS

Trips ashore are by Zodiac. Boarding the Zodiac involves walking down a gang-plank set of stairs and stepping onto the Zodiac while both the yacht and Zodiac are moving with the roll of the seas. A crew member on the Zodiac will reach for your hand to help steady you, but it can often feel tricky, depending on the amount of ocean swell. Passengers are required to wear life jackets when traveling in the Zodiacs.

Shore landings are either “dry” (you step out of the Zodiac on to large rocks or a wooden pier) or “wet” (stepping out of the Zodiac into a foot or so of surf and wading to shore). A dry landing is occasionally tricky, especially on days when the seas are active and the rocks you step onto may be slippery. For a wet landing, you may be stepping from the Zodiac into surf that may be up to your knees or higher, so it is important that you have the agility for this. Of course, our boat staff will be on hand to assist with landings.

SWIMMING/SNORKELING

Trip members should be able to swim and ideally have previous snorkeling experience. The itinerary includes snorkeling excursions on most days and snorkeling is a major attraction for any visit to the islands. The boat has complimentary shorty wetsuits (3mm neoprene) available on board for your use. Please consult our office (and your Trip Leader on the boat) with any concerns about swimming and snorkeling in the islands. Most snorkeling is in water between 10 to 40 feet deep, but if conditions allow, we may offer open-ocean snorkeling near an off-shore reef. These open-ocean snorkels are not suitable for first-time snorkelers or weak swimmers. Your Trip Leader accompanies the group on all snorkeling excursions and the Zodiac will attempt to stay close, should anyone wish to get out of the water. We do not, however, have staff members available to individually assist snorkelers. It is incumbent on each swimmer to keep track of his or her own whereabouts. Currents in Galápagos can be strong at some sites. You should only choose to swim and snorkel in places where you are completely comfortable. To snorkel, you slide off the side of the Zodiac into the water. Getting back in the Zodiac requires climbing up a small metal ladder attached to the side of the Zodiac. The boat man will help, but it is impossible for him to pull you out of the water—you must be prepared to do most of the work under your own power.

A variety of snorkeling equipment is available on board, but if you are a serious snorkeler, we highly recommend bringing your own snorkel, mask, and possibly fins to assure a proper fit. A proper fit of your mask is critical for allowing you good vision underwater. There is no scuba diving available on our Galápagos trips (our yachts are not set up for scuba diving





but there are places in Puerto Ayora where diving is available if you would like to extend your trip). Depending on your personal tolerance for cold, you may not need a wetsuit, but most trip members prefer a wetsuit. Complimentary shorty wetsuits are available on board for your use. If you easily get cold, you may prefer to bring your own full-length wetsuit. Some people like to swim in lightweight leggings or in “skins” (lycra bodysuits sold at dive shops).

LIFE ON BOARD

You should understand that this is not a “large-ship cruise,” but once you have adjusted to yacht living, you will find this to be one of the most pleasant journeys imaginable. The day usually starts with a delicious breakfast of fresh fruit, cereal, breads, eggs, fresh juice, and coffee or tea. This is often the time when your Trip Leader gives you a briefing on the day’s schedule so you can plan your clothing and equipment. On return to the boat, there may be a chance to snorkel or swim before a multi-course lunch is served. During lunch, the yacht often transits to a new area, and in the later afternoon, you’ll make a second landing, taking the Zodiac ashore for more exploration and hikes. Visitors must depart the islands by 6:00 pm. After a relaxing dinner, a wrap-up talk will be given by the Trip Leader.

CHOOSING THE RIGHT TRIP

Adventure travel often involves exotic destinations, unusual levels of physical exertion, or activities you may not have participated in previously. We work hard to help you choose the right trip for you, paying attention to your individual interests, abilities, and needs. If you have questions about the level of comfort or any of the activities described in this itinerary, please call Wilderness Travel at 1-800-368-2794 and ask for the Galápagos Manager or email us at galapagos@wildernesstravel.com.

REFERENCES

We’d be happy to put you in touch with a past client that has traveled with us on this or a similar trip.

VISIT OUR WEBSITE

At www.wildernesstravel.com, you can book your trip online or find out about added departures, last-minute deals, and one-time Limited Edition adventures that aren’t listed in our catalog. You can also access our complete library of detailed itineraries filled with enticing photos and videos, read bios of our Trip Leaders, find descriptions of trip accommodations, and check real-time availability of any trips that interest you.

Toucan Club Rewards & Discounts



T-SHIRT FRONT



T-SHIRT BACK



PATAGONIA SYNCHILLA FLEECE VEST
+ KLEEN KANTEEN 27OZ WATER BOTTLE



PATAGONIA R1 PULLOVER

We are very proud to have one of the highest rates of repeat travelers in the business, and have established the Wilderness Travel Toucan Club to reward you for your loyalty. For more information, please visit the Toucan Club page of our website at www.wildernesstravel.com/toucan.

Here's how it works:

YOUR FIRST TRIP

As a first-time traveler, you receive a lightweight Wilderness Travel T-shirt and set of durable WT Luggage Tags. On subsequent trips, we're happy to send you a new WT T-shirt and set of Luggage Tags by request.

YOUR SECOND TRIP

A top quality Wilderness Travel stainless steel water bottle by Klean Kanteen and a cozy Wilderness Travel fleece vest by Patagonia (\$100 value).

YOUR THIRD TRIP

A versatile Wilderness Travel R-1 pullover by Patagonia (\$130 value).

YOUR FOURTH TRIP

Discounts on the cost of your trip begin! You receive a 4% discount on the tour cost.

FIVE AND MORE TRIPS

You receive a 5% discount on the base trip cost. On your sixth trip, you receive a 6% discount, and so on up to your 10th trip. The maximum discount is 10%, with a ceiling of \$500.

Note: Due to special pricing considerations, Toucan Club discounts do not apply to our Private Journeys or Special Events. However, your participation on these trips does count toward your Toucan discount on future departures of Wilderness Travel's regular adventures.

TERMS & CONDITIONS

Toucan Club travel discounts cannot be used in conjunction with any other discount, unless otherwise specified. Discounts are deducted from the base trip cost and shown on the final invoice. The base trip cost is the main land/tier cost and does not include single supplement fees, extensions, internal airfare, or other additional charges. Bonus gifts (T-shirts, luggage tags, vests, water bottles, and pullovers) will be mailed approximately three weeks prior to trip departure. Terms and conditions of Toucan Club bonuses are subject to change or cancellation at the discretion of Wilderness Travel, Inc.

Travel Notes



WILDERNESS TRAVEL HAS BEEN AWARDED:

Best Travel Specialists in the World: *Conde Nast Traveler*, 2024, 4-time winner

World's Best Tour Operators: *Travel + Leisure*, 11-time winner

Best Wildlife, Hiking & Walking Trips: *AFAR Magazine*, 3 years in a row

Best Adventure Travel Companies: *USA Today*

Trip of the Year: *Outside Magazine*, 9-time winner

50 Tours of a Lifetime: *National Geographic Traveler*, 9 years in a row

Best Adventure Travel Companies: *National Geographic Adventure*, 3-time winner

Please be advised that California has established a Travel Consumer Restitution Fund under the California Seller of Travel Law that took effect January 1, 1996. This fund is designed to protect consumers from unscrupulous practices by discount airfare ticket sellers or air charter operators. Unfortunately, this law does not cover non-California residents and, even in the case of California residents, it does not cover any foreign travel where the foreign "providers of transportation or travel services" are not in compliance with the Sellers of Travel Law (compliance being defined as registered as a Seller of Travel in California and a participant in the Travel Consumer Restitution Fund). Thus none of Wilderness Travel's tours qualify and we are required by law to advise each client that they are not covered by the California Travel Consumer Restitution Fund. California law requires sellers of travel to maintain a trust account or bond. This business has a trust account. California Seller of Travel #100769640

While as accurate as possible at the time of printing, this itinerary should be considered an approximate indication of the schedule and scope of activities and trip routing, rather than an inflexible schedule of events; it is subject to change due to circumstances beyond our control. This trip is subject to the Limitation of Liability and all the terms and conditions as detailed in the General Information section of the Wilderness Travel Catalog.

Revised: April 30, 2025 2:23 PM



Wilderness Travel

1102 Ninth Street, Berkeley, CA 94710
800-368-2794 • 510-558-2488
www.wildernesstravel.com • info@wildernesstravel.com