

# Botswana: Kalahari Explorer

THE LEGENDARY KALAHARI, OKAVANGO DELTA, AND CHOBE NATIONAL PARK



Wilderness Travel





## Botswana: A World Apart

### TRIP DATE

2024

April 11-24, 2024

2025

April 11-24, 2025

For seasonal departures on alternate Botswana itineraries, please see page 18

We've created a safari that is as unique as this wondrous land—join us!

Experience the untamed beauty of Botswana as few travelers ever do, on a mobile camping safari that brings you from Moremi Game Reserve, with its abundant wildlife, to the emerald lagoons of the Okavango Delta and the golden savannas of Chobe National Park. This is the way to truly experience Botswana, out where the wildlife is, and far from the crowds.

Why a mobile safari at the heart of our journey? You will have a real experience of Africa in our Hemingway-style camps, enjoying wonderful comfort and the thrill of being out in the wilderness. Your safari guide and crew are with you throughout the adventure, a wonderful connection that is the highlight of the trip for many. Our camps are truly mobile, set up in the perfect location to give you the best access to the wildlife, and our game drives bring you right into the action, not along dusty access roads back and forth to busy lodges. At night you'll enjoy the crackling campfire with your safari team, gazing up to a canopy of sparkling stars and listening to the distant roars of the wild. This is pure safari magic, and we look forward to sharing it with you.

# What Makes WT's Botswana Safari Special?



## TRAVEL WITH SAFARI EXPERTS

Let us share our decades of experience with you. We have honed this itinerary to perfection, creating a safari with great variety and ideal pacing in Botswana's most amazing habitats.



## MOBILE CAMPS GET YOU CLOSE TO THE WILDLIFE

Your private safari camps, set up for our groups alone, put you in the prime spot for phenomenal game viewing and direct access to pristine sections of the parks. You'll enjoy three wonderfully different locations, but always with the same great Trip Leader and crew, making for a much more meaningful experience.

## BOUTIQUE LODGES IN THE OKAVANGA DELTA

We pair your mobile camping with one night at a lodge in Maun and two nights at an exclusive lodge deep in the Okavango Delta, with active options like a walking safari and exploring by *mokoro* (canoe).



## SMALL GROUPS, EXPERT TRIP LEADER, GREAT CAMARADERIE

We keep our groups small (maximum 10), and our expert Trip Leader and naturalist guide are with you for your entire safari (no handing you off to different guides from lodge to lodge). At our mobile camps, the staff-to-guest ratio is 1:1. The camaraderie and fun on these safaris is legendary.

## CUSTOM-BUILT VEHICLES WITH GUARANTEED WINDOW SEATS

Our comfortable 4WD vehicles (maximum 5 guests to a vehicle) allow you to get off road and follow game closely. Everyone has a window seat and a roof hatch for 360-degree views and great photos.



## TREMENDOUS VARIETY OF ACTIVITIES

The game drives are epic, but we have even more in store for you: guided bush walks, private riverboat and canoe journeys, and a spectacular charter flight that eliminates long drives and gives you a bird's-eye view of the landscape you've been exploring.

## EXPERIENCE BOTSWANA'S PRIME PARKS

Our safari is comprehensive, bringing you the diverse landscapes of the Okavango Delta, a World Heritage Site, exquisite Moremi Game Reserve, and Chobe National Park, with its massive elephant herds.



## A LIGHT FOOTPRINT

Our mobile camps have one of the lightest possible environmental footprints in the African wilderness—when we break camp to head to a new destination, no trace of our presence is left behind. Our selected lodges also have a deep commitment to the highest environmental standards.





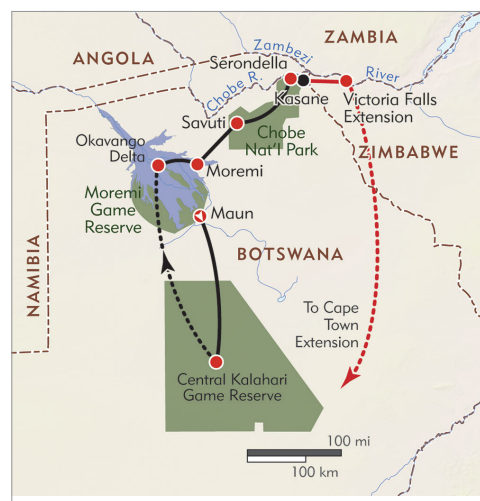
# Botswana: Kalahari Explorer

THE LEGENDARY KALAHARI, OKAVANGO DELTA, AND CHOBE NATIONAL PARK

## TRIP DETAILS AT-A-GLANCE

- Length:** 14 days
- Arrive:** Maun, Botswana
- Depart:** Kasane, Botswana
- Lodging:** 10 nights private camps, 3 nights hotels and game lodges
- Meals:** All meals included (B=Breakfast, L=Lunch, D=Dinner)
- Activity:** Safaris, Wildlife and Natural History
- Trip Level:** 1 2 3 4 5 6  
Gameviewing by 4WD vehicle, boat, and mokoro (canoe)

Botswana is renowned for its wildly varied environments, and the epic Kalahari is arguably one of the most intriguing, with its mysterious beauty and unending sense of space. We've created a special safari that explores the wonders of the Central Kalahari Game Reserve, with its unique desert wildlife and diverse habitats from salt pans and ancient riverbeds to fossil river valleys. We also explore Botswana's renowned destinations of the game-rich Okavango Delta and magnificent Chobe National Park. Our safari is timed for ideal gameviewing in the Kalahari—right at the end of the summer rainy season, when thousands of grazing animals—gemsbok, springbok, wildebeest, and more—and their attendant predators roam the grassy plains.







## DAY 1, APRIL 11, 2024 MAUN, BOTSWANA / KALAHARI DESERT

Upon midday arrival in the town of Maun, Botswana, trip members on the recommended flight are met at the airport and transferred to Thamo Telele. Set on a game farm outside Maun, the lodge's classic yet simple chalet-type tent accommodations offer a wonderful welcome to Botswana and a delightful opportunity to slip into the world of safari. The remainder of the day is free to rest, explore the grounds, and recover from jet lag. We gather for our group orientation and Welcome Dinner in the evening...D

*"Our Trip Leaders and crew provided all of the adventure and discovery one could hope for while treating us to first-class service and comfort and giving us a sense of absolute safety."*

*Ellen B., St. Louise, MO*

## DAYS 2-4, APRIL 12-14, 2024 KALAHARI DESERT: CENTRAL KALAHARI GAME RESERVE

We leave Maun and "civilization" to enter the wild world of the Kalahari, known in the Bushmen tongue as "The Great Thirstland." Although the Kalahari is too dry to support a dense wildlife population, here we discover a fascinating world of adaptation, where persistent drought, heat, sand, and dust, along with the search for water, shape the distinctive wildlife and vegetation patterns.

Over the next three days, we visit the remote and spectacular Central Kalahari Game Reserve, originally created as a refuge for the San Bushmen. This area was made famous by Mark and Delia Owens in their book *Cry of the Kalahari*,

an account of their seven-year study of resident brown hyenas and black-maned Kalahari lions. Our departure is timed at the end of the rainy season, when the desert wildlife is most abundant and the gameviewing most rewarding. After the summer rains, there should be splendid gameviewing over the dunes and fossil pans, with a chance to see some rare desert species. We camp in Deception Valley, an ancient fossilized riverbed, near the Owens' airstrip and former

campsite. Overnights are in our private mobile camp, offering an authentic experience of the African bush that no safari lodge or permanent tented camp can offer...BLD each day

## DAYS 5-6, APRIL 15-16, 2024 OKAVANGO DELTA

The 800-mile-long Okavango is "the river that never finds the sea," disappearing into a remarkable maze of lagoons, channels, and islands to create the Okavango Delta. Our morning charter flight from the desert to the remote western corner of the Okavango Delta provides a spectacular overview



of this otherworldly environment. We land our charter aircraft on one island and boat over to Xugana Lodge (or Camp Okavango). Situated on the Maunachira river system, these deluxe lodges feature comfortable en suite chalets and a beautiful bar and dining area overlooking the Xugana lagoon. They are the perfect base for exploring the Okavango on foot and by motorboat and mokoro (a dugout canoe navigated by a skilled poler). During our excursions, we should see bushbuck, a plethora of birds, lechwe (a semi-aquatic antelope), and perhaps even buffalo, elephant, and the shy sitatunga, another antelope adapted to this watery realm. As we glide along the water lily-filled waterways aboard our mokoro, we enjoy the calm solitude of this quintessential delta setting. Overnights at lodge...BLD each day

**DAYS 7-9, APRIL 17-19, 2024**  
**MOREMI GAME RESERVE:**  
**XAKANAXA**

From Xugana, we transfer by boat to the Moremi Game Reserve within the protected portion of the Okavango Delta ecosystem. Located in the northeast corner of the Delta, Moremi is an ornithologist's paradise, with almost every

species of central-southern African bird life, including bee-eaters, darters, colorful kingfishers, and a variety of waterfowl. We may also spot rare wildlife like tsessebe and Burchell's zebra, along with ostrich and predators such as lion, wild dog, and spotted hyena. This is the first national park in southern Africa to have been created and administered by an African tribe living on their own land, the BaTawana.

Our campsite is at Xakanaxa, on the tip of a mopane "tongue" jutting into the delta: a beautiful setting of secret pools, tall forest, and open grassland. This mix of ecological niches ensures a good variety of birds and game, and we explore by 4WD vehicle and boat. Our campsite is for our group alone (though we are sometimes joined by hippos that come out at night to feed on the grass near our tents!), and the enchanting sound of bell frogs serenades us to sleep...BLD each day

---

*"It was a great trip. The Trip Leader was excellent in every way possible. His passion for the animals and the environment added so much to our appreciation."*

---

*Susan M., Keswick, VA*

---

**DAYS 10-11, APRIL 20-21, 2024**  
**CHOBE NATIONAL PARK: SAVUTI CHANNEL**

On Day 10, we leave the Okavango ecosystem and make the long drive to the southern section of Chobe National





Park, where we explore the Savuti River area, a landscape of mopane woodland that's filled with game. The Savuti Channel itself dried up in 1980, but its marsh is now a vast grassland attracting migrating herds of herbivores. It is one of the best places to find lion, leopard, and other predators—and their prey, large herds of giraffe, kudu, vervet monkey and baboon. Our mobile camp—for our group alone—is set along the banks of the dry Savuti Channel, but near a permanent waterhole that features excellent game viewing...BLD each day

DAYS 12-13, APRIL 22-23, 2024  
CHOBE NATIONAL PARK: SERONDELLA

We move on to the Serondella area, in the northeast portion of Chobe National Park, famous for its elephant population numbering in the tens of thousands. The elephants here are active and vocal, shaking their heads in mock charges and sparring with each other. We take game drives among the large herds of elephant, buffalo, zebra, and wildebeest. Serondella is also home to the Chobe bushbuck and puku, two of the rarer species of antelope found in Botswana. While here we take an afternoon river cruise on the Chobe River to view animals as they come down to drink before sunset. The light at this time of day is incredible! Camping overnights...BLD each day

DAY 14, APRIL 24, 2024  
DEPART

Transfer to the airport in Kasane and depart on homeward-bound flights, or extend your stay at Victoria Falls, one of the world's most magnificent natural wonders. We heartily recommend you book an overnight or more at this World Heritage Site so you can enjoy the many optional activities offered, from a relaxing sunset cruise on the Zambezi or the sightseeing “flight of the angels” over the falls. WT is happy to make reservations for your extra nights (an “on your own” expense)...B

LODGING OVERVIEW

Night 1	Royal Tree Lodge, Maun
Nights 2-4	WT's Mobile Safari Camp, Central Kalahari Game Reserve
Nights 5-6	Boutique Lodge, Okavango Delta
Nights 7-9	Our Mobile Safari Camp, Moremi Game Reserve
Nights 10-11	Our Mobile Safari Camp moves to Savuti, Chobe National Park
Nights 12-13	Our Mobile Safari Camp moves to Serondella, Chobe National Park







# Mobile Camping—WT Style

SAFARI AS IT SHOULD BE

There is simply no experience that compares to a mobile safari. Our expert Trip Leader and crew are with you for the whole journey, bringing incredible depth to your safari. It's a world apart from lodge-based safaris where you are handed off from guide to guide. The camp crew are wonderful, and you'll get to know them all—Mr. Fish, Kaiti, Baliyu, and Iktina, our great cook, as they welcome you back from your safari adventures each day, prepare your morning coffee just as you like it, and share laughs and stories of your safari adventures around the campfire at day's end.

## UNDER CANVAS

Far from the busy lodges, our mobile camps immerse you deep in Botswana's most magnificent and wildlife-rich terrain in absolute comfort. You'll enjoy meals in our big open-sided dining tent, then gather around the campfire beneath

a starry sky. Our spacious private tents feature real beds (no cots!), and a private bathroom and shower. You'll drift asleep to the enchanting sounds of the African night.



*"The camp crew was excellent. They went out of their way to make us comfortable and have a wonderful experience in the campsite. Everything was perfect!"*

*Julie D., North Salem, NY*

## ENJOY THE GOOD LIFE

Savor gourmet picnics served in the bush, sundowner drinks amid grazing giraffes, and multi-course meals by candlelight in our own private camp, far from the safari crowds.

## GO-ANYWHERE GAME VIEWING

We get you off road! Delve deep into Botswana's wilds in our custom-built 4WD vehicles with guaranteed window seats, roof hatches with 360-degree views, battery-charging facilities, and an electric fridge.

## A STAFF TO GUEST RATIO OF 1:1

Enjoy the expert skills of your Trip Leaders, game spotters, highly trained chef, camp manager, and wonderful camp team who accompany you throughout your safari. Together, these safari magicians bring you an unforgettable experience of the African bush you won't get in a lodge!



# Safari Life Under Canvas

## SPACIOUS TENTS

Your walk-in canvas tent (approximately 10 by 18 feet) is furnished with beds that can be arranged as two singles or one double, cotton duvets, sheets, pillows, and battery-powered lighting. A small veranda at the front has two wooden chairs, a small table, and a washbasin.

## PRIVATE BATHROOMS

At the rear of the tent is your en suite bathroom, with a warm-water shower, sink, and toilet.

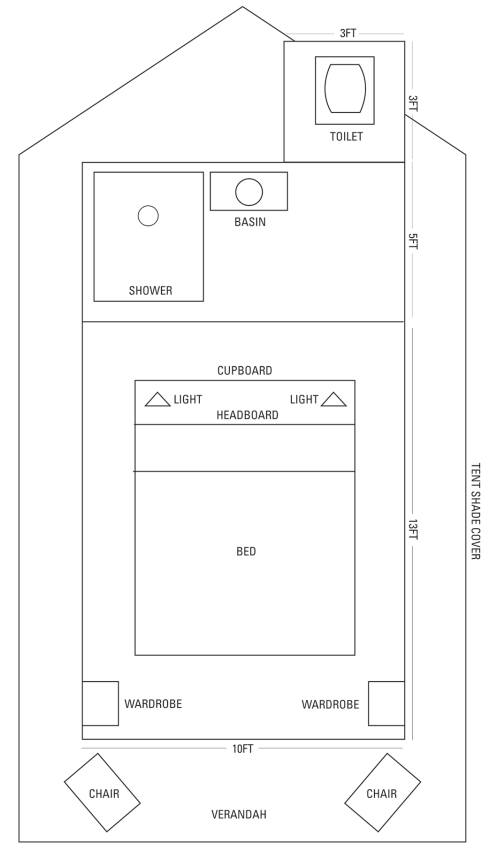
## PERSONAL SERVICE

You'll have your own tent steward, along with complimentary laundry service in camp.

## ELEGANT DINING

Meals are an event, with delicious, freshly prepared three-course meals, including wine and soft drinks. Camp cuisine is created by our talented camp chefs and served around an elegantly set dining table, candle-lit at night.

"Wow! I am so glad we decided on the Kalahari Explorer and mobile tent camping. I am NOT a camper, and truthfully, didn't realize exactly what it meant to be in a mobile tent camp. But I can honestly say I am so glad to have had this experience. I feel the richer for it."



**MOBILE TENT LAYOUT**  
**10' X 18'**

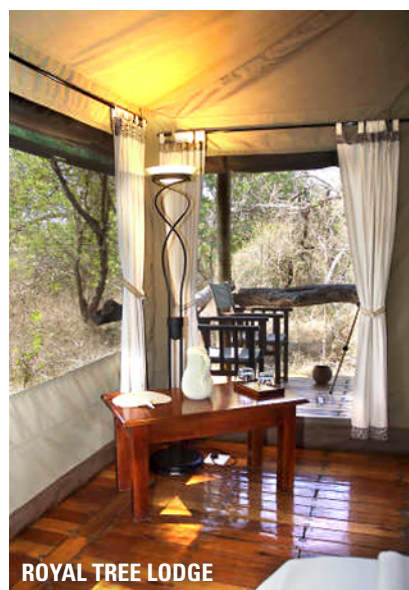
*Vicky L., San Rafael, CA*







XUGANA ISLAND LODGE



ROYAL TREE LODGE



CAMP OKAVANGO LODGE



CAMP OKAVANGO LODGE



CAMP OKAVANGO LODGE

## Boutique Lodges & A World-Famous Grand Hotel

### THE PERFECT COMPLEMENT TO YOUR CAMPING SAFARI

**Thamo Telele (Day 1)**, set on a game farm outside Maun, features seven spacious, furnished tents on raised decks, complete with en suite facilities—a stylish bath and open-air shower. The lodge's main thatched building opens onto a large tree-shaded deck and features a bar, lounge, dining room, and a small swimming pool.

Our nights at in the World Heritage Site of the Okavango Delta (Days 5 & 6) will be at one of the following lodges. Each have been chosen for their stunning location, wonderful service, and great access to the wide range of activities in this extraordinary ecosystem.

**Xugana Island Lodge** is set on a private concession in the most dramatic setting of this great waterland. Eight lovely thatch-roofed chalets face the lagoon,



CAMP OKAVANGO LODGE

each with their own private deck and en suite facilities. The bar and open-air dining area overlook the private lagoon.

**Camp Okavango Lodge** is set on remote Nxaragha Island and has 11 guest suites with private decks and great views over the waterways of the delta. The lower deck features two fire pits for evening enjoyment, and there is an infinity-edge swimming pool. At both lodges, you'll have quick access to our safari activities on foot, by *mokoro* (canoe) and motorboat, all fantastic ways to explore the exquisite beauty of the Okavango Delta.



# Life on Safari

Each day on safari unfolds in its own unique way—this is what makes the experience so wonderfully alive. Our schedule is planned around the optimum times for seeing and photographing the wildlife, and we keep things flexible to make the most of any special opportunities that come along—that’s the beauty of being on a small group safari. We’ll let nature make the final call!

## 5:30 AM

Wake up call is early—but it is worth it, as morning is when the animals are very active. Savor a fresh-brewed cup of coffee or tea and continental breakfast, then we’ll head out on our morning wildlife drive or walk, with refreshments served midway, and cozy blankets in the vehicles if the morning is chilly.

## 11:00 AM

We’re welcomed back to camp for lunch and time to relax, read, or watch wildlife activity at the local water hole.

## 3:30 PM

After a mid-afternoon snack, we head out for afternoon game viewing. Our

Trip Leader and game spotters are phenomenal in their ability to track wildlife.

## SUNSET

Indulging in a wonderful safari tradition, we’ll pause in our game viewing to enjoy a “sundowner” cocktail at a scenic spot and watch the setting sun fill the sky with color.

## 7:30 PM

Back in camp, we freshen up, then gather to savor dinner and stories. Take a seat by the campfire for a nightcap below the star-filled African sky, then head to your tent to drift to sleep to the sounds of the night.





# Our Guides

## MAKE ALL THE DIFFERENCE

Trip Leaders with passion and deep knowledge of their destination make all the difference to your experience. Our leaders are skilled professionals, and they are also incredibly warm people who run on endless energy and genuine excitement for welcoming you. They have that special “it” factor that transforms a trip into an unforgettable journey. Our naturalist Trip Leader and his Assistant Trip Leader are with you throughout the journey.



### ANTHONY MONNAALETSATSI

Anthony was born in the Okavango Delta and began his outdoor education early on, learning all that he could about the wildlife and nature around the delta from his parents. He went to school in Maun and became a driver at the Crocodile Camp, later enrolling in the Botswana Wildlife Training Institute. After receiving his professional guiding license, he began working as a guide in 2000 and worked for two different safari companies before joining the Wilderness Travel team in 2014. Outside of guiding, he enjoys traveling and has been to Germany, Italy, Romania, and all over Southern Africa. He's also a father and a farmer, and is frequently challenged by the delicate balance between protecting wildlife and protecting his crops, both things he greatly values.



### DANIEL SECHI

Daniel was born in Lobatse, Southern Botswana, and as a youth, heard many stories about the bush from his father, a well-respected tracker. His first introduction to the wilds of Botswana began when he joined a wildlife club in primary school, and he finished high school in the Ghanzi district, right next to the Khutsi/Central Kalahari game reserve. After finishing school, Daniel applied for a position at the Botswana Department of Wildlife and National Parks and was immediately given a post as a game ranger in Chobe National Park where he worked from 1999 to 2005. He also worked in the anti-poaching unit during his time there. Daniel earned his Professional Guide License in 2008 and started guiding at a lodge in the Northern Okavango, but quickly moved on to the more demanding but rewarding mobile safari sector. His passion is the bush but his love is for family—he is a father of four and also cares for his sister's children.



# Trip Details

## PRICING INFORMATION

### TRIP COST

**Prices are per person, valid through 2024**

\$10995 (8-10 members)

\$11295 (4-7 members)

Single supplement: \$1295 (limited single tent availability)

Internal airfare: \$930 (subject to change)

Park fees: \$775

2025 Trip Cost: Please call for details.

[Botswana Wildlife](#), and [Okavango Explorer](#)—see page 18.

Please call for separate itineraries and pricing.

To offer the lowest possible cost, our trips are priced according to the number of participants on the trip. All costs are per person, based on double occupancy. If you wish to have a single room, you must pay the single supplement fee. Please note that Wilderness Travel staff, or guests of Wilderness Travel such as travel writers, photographers, or leaders-in-training, are not included in the tier pricing count.

### TRIP COST INCLUDES

- Expert leadership of a Wilderness Travel Trip Leader and local guides
- Accommodations, based on double occupancy
- All meals included as indicated in the Detailed Itinerary (B=Breakfast, L=Lunch, D=Dinner)
- Safari camp staff
- Chobe River sunset cruise
- Land and boat transportation, airport transfers as noted
- Zambia visa at border

### TRIP COST DOES NOT INCLUDE

International airfare to/from Africa; flight from Johannesburg to Maun and Kasane to Johannesburg; internal charter flights; any meals not specified after each itinerary day; airport departure taxes; optional gratuities to leaders or staff; additional hotel nights necessary due to airline schedule changes or other factors; pre-trip expenses of medical immunizations (if any); travel insurance, passports and visas; and other expenses of a personal nature (alcoholic beverages, laundry, etc.).

### PAYMENT SCHEDULE

At time of reservation: \$600

90 days prior to departure: Balance

### CANCELLATION AND TRANSFER FEE SCHEDULE

Up to 91 days prior to departure: No charge!

61-90 days prior to departure: 25% of trip cost

46-60 days prior to departure: 50% of trip cost

45 days or less: 100% of trip cost

### CURRENCY EXCHANGE RATE

Because the prices published for our program are set so far in advance of the trip dates, we are occasionally faced with exceptional cost increases and/or currency fluctuations that affect the actual cost of running the trip. In most years, no price changes are necessary. However, we do reserve the right to raise or lower the trip price if there is a significant change in costs or exchange rates. If this is the case, your final invoice will reflect the difference in trip cost.



# Arrival & Departure

Upon confirming your trip reservation, we will send you a Welcome Packet that includes a list of documents (passport, visas, etc.) required for your trip. Please feel free to call if you would like this information before making your air arrangements.

## ARRIVAL & MEETING PLACE

Maun, Botswana

**Suggested Airport:** Maun Airport (MUB)

**Suggested Date & Time:** Day 1, before 5:00 pm

**Meeting Place:** Upon arrival, you will be met by your Trip Leader or WT representative outside the arrivals hall at the Maun Airport.

## DEPARTURE

Kasane, Botswana

**Suggested Airport:** Kasane International Airport (BBK)

**Suggested Date & Time:** Day 14, after 1:00 pm

At the end of the trip (Day 14) we will transfer you to the Kasane Airport to check in for flights departing after 1:00 pm. If you are extending your stay at Victoria Falls and departing on a different day, a transfer can be arranged at additional cost.



## INTERNATIONAL AIR TRAVEL

You are responsible for making your own arrangements for flights to and from Africa. Airlines with the most convenient schedules for this trip include:

**British Airways**

[www.ba.com](http://www.ba.com)

**South African Airways**

[www.flysaa.com](http://www.flysaa.com)

**Virgin Atlantic**

[www.virgin-atlantic.com](http://www.virgin-atlantic.com)

**Delta/KLM Airlines**

[www.delta.com](http://www.delta.com)

[www.klm.com](http://www.klm.com)

**Air Botswana**

[www.airbotswana.co.bw](http://www.airbotswana.co.bw)

There are many online consolidator websites for booking travel, but for more personal help arranging air transport, you can contact Exito Travel at 1-800-655-4053 in the US or 1-800-670-2605 in Canada. They are very adept at putting flight itineraries together, to even the most far-flung places. More information can be found on Exito's website at [www.exitotravel.com](http://www.exitotravel.com).

Depending on your routing, it is necessary to depart from the US one or possibly two days prior to Day 1 of the trip itinerary. The name on your airline ticket must match the name on your passport exactly, and your passport must be valid for at least six months after your date of return to the US.

**Please do not purchase your tickets until you are confirmed on the trip and have reviewed your proposed air schedule with our office.** Once tickets are purchased, please forward a copy of your email flight confirmation from the airline.

## EXTRA HOTEL NIGHTS

We are happy to arrange additional hotel nights for you in Maun. Please contact our office to book these reservations.



# Extend Your Adventure

To help you make the most of your adventure, we've created several exciting trip extensions. For detailed information, including full itineraries and complete pricing, please visit our webpage and click on "Extend Your Trip": <https://www.wildernesstravel.com/trip/botswana-central-kalahari-safari/>



## CAPE TOWN EXTENSION

The town where modern South Africa was born has a glorious location on the mountainous Cape Peninsula along the blue waters of Table Bay. There is much to see, from Table Mountain to the famous botanical gardens at Kirstenbosch, where 10,000 species are cultivated on 1,000 acres. Close by is Stellenbosch and Franschhoek wine country and the Cape Point Nature Reserve, where the African continent ends.

The itinerary can be customized as needed, please call for details.

*4 days. From \$1795.*



## AMONG THE ELEPHANTS AND RHINOS EXTENSION

Magnificent Hwange National Park, one of the largest national parks in Africa, is home to some 40,000 elephants along with lion, hippo, cheetah, and more. You'll also have the unique opportunity to visit two white rhinos at the Ngamo Rhino Sanctuary in Hwange—these are the first white rhinos to be reintroduced in this part of Zimbabwe. Enjoy game drives with the flexibility to get out and walk, lantern-lit dinners in the bush, a ride on a vintage railway car, and a walk to school with the local kids (you'll even learn a few words of their click language). *4 days. From \$2595.*



## VICTORIA FALLS EXTENSION

Victoria Falls, or Mosi-oa-Tunya, "the smoke that thunders," is one of Africa's most famous sights. Here the mile-wide Zambezi River drops 300 feet into a sheer chasm to create a spectacular thundering cascade. Above the falls, the river is placid, with palm-fringed islands and rainforested banks. In 1860, Scottish missionary and explorer David Livingstone was the first Westerner to report the existence of this mile-wide cascade, and he named this magnificent wonder for his queen. Since then, it has attracted visitors from around the world. The Zambezi River marks the border between Zambia and Zimbabwe, and visitors can walk across a bridge to view the falls from both countries. *3 days. From \$1325.*



# What to Expect

## WHAT THE TRIP IS LIKE

This trip is rated Level 2, Easy to Moderate. It is a vehicle-based camping safari, with ten nights camping. It will enjoyed by anyone in reasonably good health. Although the trip is not rigorous, it does involve some long driving days over rough roads and game tracks. You will enjoy the trip more if you are in good shape and in good health. Any African safari is an adventure, and the traveler to Africa should bring along flexibility, a sense of humor, curiosity about new peoples and places, and an openness to the unexpected.

Our mobile tented camping safaris in Botswana provide a true bush experience without sacrificing comfort. Our comfortable walk-in tents feature canvas beds, linens, mirror, tent lamps, chairs, and washbasins. Behind each tent are separate toilet and hot water shower tents. Our crew sets up camp and prepares all meals. Delicious food is served in a comfortable dining tent. You'll find camping delightful and very comfortable, and you will appreciate how close to nature you feel.

We travel by Toyota 4WD Land Cruiser "go-anywhere" safari vehicles equipped with a refrigerator for cold drinks and a reference library on flora, fauna, and avifauna. They carry five trip members per vehicle, with guaranteed window seating.

During drives and walks, we can at times get quite close to wild animals. Being very quiet improves everybody's chances of observation. In the interest of safety, your Trip Leader explains limitations on movement while on game drives, in the safari vehicles, and around camp. Incidents with wild animals are extremely rare on safaris, but no trip can guarantee immunity from such incidents. Wilderness Travel is not to be held responsible for incidents involving the behavior of wildlife.

## WEATHER

The best game viewing period is during the "dry" season, which runs from late March to October. Because of the minimal rainfall during this season, the bush turns golden brown and in many areas is beaten flat, so game viewing is easier and animals concentrate around major water sources.



Average Daily Max/Min °F												
	Jan	Feb	Mar	Apr	May	Jun	Jul	Aug	Sep	Oct	Nov	Dec
Maun	91/68	90/68	90/66	86/61	82/52	77/46	79/45	84/50	91/59	93/66	93/68	91/68
Victoria Falls	88/68	86/66	88/64	86/61	84/52	79/46	79/45	84/50	91/59	93/66	91/68	88/68
Rainfall - Inches												
Maun	4.4	4.1	2.4	1.0	0.2	0.0	0.0	0.0	0.2	0.7	1.9	3.4
Victoria Falls	6.7	5.5	3.0	0.8	0.1	0.0	0.0	0.0	0.0	0.8	2.5	6.4



The Okavango Delta's water level starts to rise during these months.

October to April can be very hot, with most of the rainfall between December and February. This season characteristically has hot sunny days with afternoon thundershowers. This season is excellent for the viewing of newborn mammals, summer flowers, and the migration of rare birds. Predator viewing during this time remains quite good.

### CHOOSING THE RIGHT TRIP

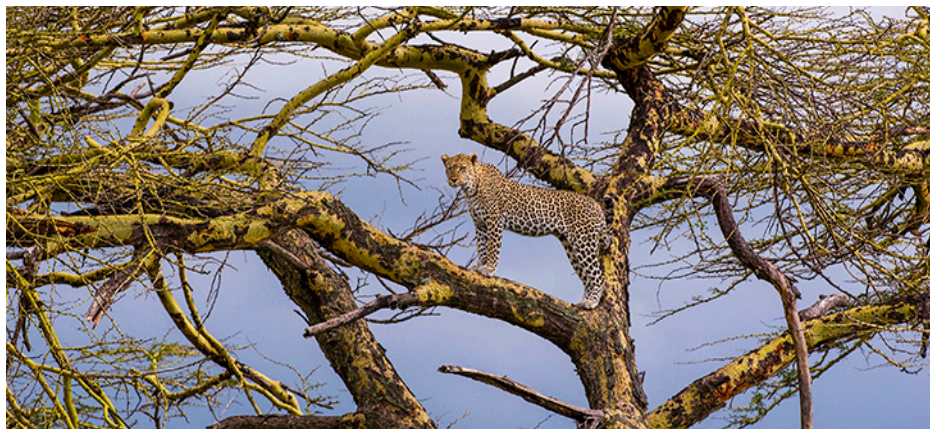
Adventure travel often involves exotic destinations, unusual levels of physical exertion, or activities you may not have participated in previously. We work hard to help you choose the right trip for you, paying attention to your individual interests, abilities, and needs. If you have questions about the level of comfort or any of the activities described in this itinerary, please call Wilderness Travel at 1-800-368-2794 and ask for the Africa Manager or email us at [africa@wildernesstravel.com](mailto:africa@wildernesstravel.com).

### REFERENCES

We'd be happy to put you in touch with a past client that has traveled with us on this or a similar trip.

### VISIT OUR WEBSITE

At [www.wildernesstravel.com](http://www.wildernesstravel.com), you can book your trip online or find out about added departures, last-minute deals, and one-time Limited Edition adventures that aren't listed in our catalog. You can also access our complete library of detailed itineraries filled with enticing photos and videos, read bios of our Trip Leaders, find descriptions of trip accommodations, and check real-time availability of any trips that interest you.





# A Safari For Every Season

In addition to our *Botswana: Kalahari Explorer*, we have created two other special departures that explore this wondrous region. Explore all of our Botswana trips at [www.wildernesstravel.com/africa/botswana/](http://www.wildernesstravel.com/africa/botswana/)

## BOTSWANA WILDLIFE SAFARI

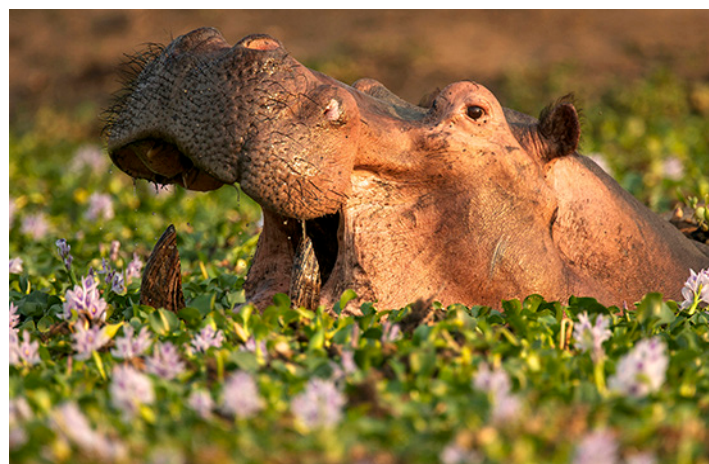
May 9-19, 2024	Aug 29-Sep 8
May 24-Jun 3	Sep 11-21
Jun 8-18	Sep 24-Oct 4
Jul 12-22	

*11 days. From \$9795.*

A mobile safari is the only way to truly experience the wonders of Botswana. This is our classic Botswana Safari, where we'll enjoy a staggering abundance of wildlife as we track game by 4WD vehicle, riverboat, and, a Botswana specialty, by mokoro (canoe). Our unique mobile camps get you up close to the wildlife and away from the crowded lodges, as you explore with your expert guide from Moremi Game Reserve and the exquisite Okavango Delta, to vast Chobe National Park and the amazing spectacle of Victoria Falls.

"Trip of a lifetime, with many memories. Our guides added a wonderful perspective of growing up in Africa, tribal life, customs, and history."

— Nancy K., Granite Bay, CA



## OKAVANGO EXPLORER

Jun 24-Jul 7, 2024	Aug 14-27
Jul 27-Aug 9	

*14 days. From \$11,295.*

On our extended Okavango adventure, timed for the season when water levels are at their highest, we feature 10 nights "under canvas" in our private mobile camps, one night in a lightweight "fly" camp, and two nights at lovely Xugana Island Lodge or Camp Okavango. We safari deep into the wildlife paradise of the Okavango Delta for eight full days, and also explore the adjoining Moremi Game Reserve in the eastern Okavango, with its stunning floodplains and rich diversity of wildlife, and across the game-rich savannas of Chobe National Park, teeming with elephant, zebra, and wildebeest.



# Travel Insurance

We highly recommend you purchase travel insurance. You can take advantage of a comprehensive Travel Protection Plan designed for Wilderness Travel by Travelex, or purchase other insurance on your own. See our website for details:

[www.wildernesstravel.com/insurance](http://www.wildernesstravel.com/insurance)

Travelers to Botswana are strongly encouraged to purchase full medical, emergency evacuation, and repatriation insurance that covers you for at least \$25,000, as well as Trip Cancellation Insurance. Due to the lack of advanced medical facilities in Botswana, you may need to be evacuated to Johannesburg or even back to the US in case of serious illness or injury. Evacuation by air may or may not be possible, depending on the location. If you require evacuation from a trip, you are responsible for payment of all evacuation costs. You must pay evacuation costs directly to the evacuation service prior to the evacuation. Acceptable forms of payment are typically

cash or credit cards. If you are able to use your credit card, be aware that a service charge will be assessed in addition to the actual cost of the evacuation. You must bring one of these forms of payment with you in case of emergency. You will need to contact your insurance company for procedures and reimbursement policy.

Trip cancellation insurance reimburses you for non-refundable payments should you need to cancel your trip due to a covered sickness or injury to yourself, a traveling companion, or family member, or for certain other unforeseen circumstances. For details, see the Description of Coverage brochure and enrollment forms included with your confirmation packet. Travel insurance must be paid for before final payment for the trip. If you purchase your own insurance elsewhere, please provide us with proof of coverage, policy number, and the contact phone number for your insurance carrier.





## WILDERNESS TRAVEL HAS BEEN AWARDED:

**Best Travel Specialists in the World:** *Condé Nast Traveler*, 2024, 4-time winner

**World's Best Tour Operators:** *Travel + Leisure*, 11-time winner

**Best Wildlife, Hiking & Walking Trips:** *AFAR Magazine*, 3 years in a row

**Best Adventure Travel Companies:** *USA Today*

**Trip of the Year:** *Outside Magazine*, 9-time winner

**50 Tours of a Lifetime:** *National Geographic Traveler*, 9 years in a row

**Best Adventure Travel Companies:** *National Geographic Adventure*, 3-time winner

Please be advised that California has established a Travel Consumer Restitution Fund under the California Seller of Travel Law that took effect January 1, 1996. This fund is designed to protect consumers from unscrupulous practices by discount airfare ticket sellers or air charter operators. Unfortunately, this law does not cover non-California residents and, even in the case of California residents, it does not cover any foreign travel where the foreign "providers of transportation or travel services" are not in compliance with the Sellers of Travel Law (compliance being defined as registered as a Seller of Travel in California and a participant in the Travel Consumer Restitution Fund). Thus none of Wilderness Travel's tours qualify and we are required by law to advise each client that they are not covered by the California Travel Consumer Restitution Fund. California law requires sellers of travel to maintain a trust account or bond. This business has a trust account. California Seller of Travel #100769640

While as accurate as possible at the time of printing, this itinerary should be considered an approximate indication of the schedule and scope of activities and trip routing, rather than an inflexible schedule of events; it is subject to change due to circumstances beyond our control. This trip is subject to the Limitation of Liability and all the terms and conditions as detailed in the General Information section of the Wilderness Travel Catalog.

Revised: June 27, 2024 9:13 AM



1102 Ninth Street, Berkeley, CA 94710

800-368-2794 • 510-558-2488

[www.wildernesstravel.com](http://www.wildernesstravel.com) • [info@wildernesstravel.com](mailto:info@wildernesstravel.com)