

Alaska: Exploring Glacier Bay

SEA KAYAKING, HIKING, AND WILDLIFE VIEWING IN SOUTHEAST ALASKA

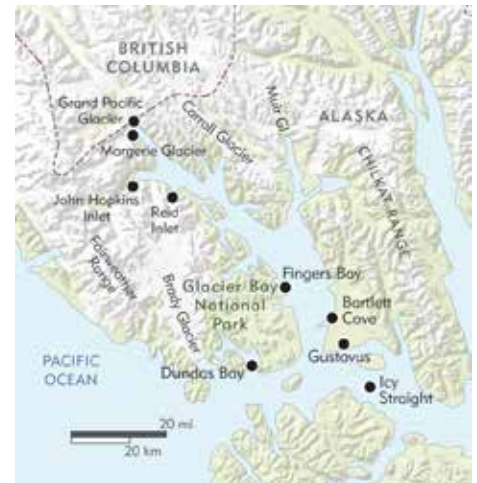


Wilderness Travel

Overview



Board a historic small vessel (either the 8-guest *Westward* or 12-guest *Catalyst*) to experience the splendor of Glacier Bay National Park. It's an intimate way to savor the wildlife spectacles and soaring landscapes of this famed national park—far from the big ships. You'll hike in remote coves and tiny inlets, look for humpback whales, see grizzly and black bears foraging along the wild beaches, and enjoy the expertise of your naturalist guide each day as you kayak and explore. At day's end, in an anchorage far from the outside world, enjoy a gourmet meal prepared by the on-board chef and listen for the breaths of passing humpback whales. While we have a planned itinerary, each trip differs slightly depending upon the time of the tidal currents, the weather conditions, wildlife viewing opportunities, and the wishes of our clients.



Please Note: These adventures are not exclusive Wilderness Travel departures and it's possible you may be joined by other passengers. However, the small size of the vessel makes for an intimate and convivial journey among like-minded travelers.

TRIP DATES

May 6-15, 2025 *Westward*
May 17-26, 2025 *Westward*
July 1-8, 2025 *Catalyst*
July 10-17, 2025 *Catalyst*
July 21-28, 2025 *Westward*
July 30-August 6, 2025 *Westward*

What Makes WT's Alaska Cruise Special?



SMALL SHIPS

Aboard our small expedition ships—only eight guests on the *Westward* or twelve guests on the *Catalyst*—means you are able to go ashore in areas designated as Wilderness by the Forest Service, where group sizes are limited to twelve persons. The boats can anchor in inlets and coves that larger ships just can't access.

ITINERARY DESIGN

This journey has been carefully refined over decades of local experience to give you a true insider's access to the rugged wilderness of Alaska. Our days allow for flexibility, so you don't have to rush past the whales, bears, and glaciers we come across, and can take your time on our kayaking and hiking excursions. We make sure you feel like you have all of Alaska to yourself!



CUISINE

Meals onboard are delicious, locally sourced, and artfully presented. The chefs performs their culinary magic with ingredients from local providers, including organic farmers and local fishermen. Our guests frequently comment that the cuisine is an unexpected highlight of their trip.



ONE OF A KIND WOODEN VESSELS

The *Catalyst* was built in 1932 as the University of Washington's first research vessel, and the *Westward* was launched in 1924 and has served VIPs including Bing Crosby, Walt Disney, John Wayne, and Marjorie Merriweather Post!

CONSERVATION

The traditional engines in these vessels are efficient, using as much fuel in an entire season as some competitors consume in a week. The built-in electrical system allows hours at anchor without running a generator, which means there is less noise disruption toward wildlife and more opportunities for guests to enjoy the sounds of the forest and open water.



TRIP LEADERS

The experienced crew offers a great diversity of talents and skills with backgrounds as naturalists, kayak guides, researchers, and even authors. They look forward to sharing their experience and exploring Alaska with new guests each year.



Itinerary



TRIP DETAILS AT-A-GLANCE

- Length:** 8 days
Arrive: Juneau, Alaska
Depart: Juneau, Alaska
Lodging: 9 nights aboard a private expedition vessel
Meals: All meals included
(B=Breakfast, L=Lunch, D=Dinner)
Activity: Sea Kayaking, Small Boat and Yacht Cruising, Small Ship Cruising, Walking, Whale Watching, Wildlife and Natural History
Trip Level: ① 2 3 4 5 6
Easy to moderate hiking and sea kayaking (no previous kayaking experience necessary)

JUNEAU TO JUNEAU (8-DAY ITINERARY)

This itinerary is dependent on the weather and the tides and may change at the captain's discretion.

DAY 1 JUNEAU / GLACIER BAY NATIONAL PARK

Depart from Juneau's Auke Bay Marina at 1:00 pm. As you head south down Gastineau Channel, watch as the evidence of civilization slips into the wake. Soon high rises, power lines, and cruise ships are far behind you and orcas, humpbacks, and rafts of seabirds are in front of you. Your first night's anchorage is in a quiet harbor outside the borders of Glacier Bay National Park. Here you can launch kayaks and take your first paddle in the wilderness.

DAYS 2-7 EXPLORING GLACIER BAY NATIONAL PARK

Travel through the bays and inlets of Glacier Bay National Park, stopping at beautiful anchorages for the night after observing wildlife and possibly a calving glacier or two. Hiking or kayaking, accompanied by the on-board naturalist, you will learn about the fauna and flora of the area. Each trip varies depending on the weather and duration; some highlights include:

Bartlett Cove/Fingers Bay: Stop near the Park entrance to hike the Bartlett Cove nature trail. After returning to the boat, cast off and head further into the bay. At Fingers Bay, you may see bears rooting for fresh food upon the beach and a myriad of sea birds that have flocked to the rich waterways of the park.

Reid Glacier: This glacier has recently grounded out and provides an opportunity to walk right up to its face. The discovery of the day might be that ice worms are real! You will also walk at the entrance of the inlet and look for remnants of a small mining claim, worked by the Ibach family during the early 1900s.



Grand Pacific and Marjorie Glaciers: For some, a highlight may be the visit to these glaciers, or the otters that you may see as you explore John Hopkins Inlet. In any case, it promises to be a day of superlatives. Kittiwakes nest along the side of the glaciers, while eagles come to rest upon the icebergs. Listen to the glacier cracking and watch it calving into the sea with an enormous splash.

Wildlife: Watch for bears and mountain goats feeding and sunning themselves on rocky ledges as you sail by, looking for Steller sea lions who haul out on small islands. These islands also host a gathering of puffins. Glacier Bay boasts a large array of quiet coves and bays, each of which plays host to a stunning variety of plants and animals. Humpback whales will come into view in some of the richest fishing grounds in Southeast Alaska.

Humpback Whales: Now on the endangered species list, humpbacks (*Megaptera novaeangliae*) are baleen whales distinguished by their extremely long flippers, sometimes almost a third of the length of the entire animal. They have a small dorsal fin often seen when the animal is beginning to dive. Adults reach up to 55 feet in length. Like other baleen whales, adult females at any given age are usually larger than males. Humpbacks undertake epic long-distance migrations to temperate or tropical wintering areas. There they spend the winter breeding and bearing their young after a gestation of 11 or 12 months. During spring, the animals migrate back to Alaska where food is abundant. Humpback whales that summer in the north Pacific are from three separate stocks

that winter in Mexico, Hawaii, and the western Pacific. Whales that summer in Alaska are primarily from the Hawaii group. Although the actual time it takes whales to migrate is not well known, one whale identified in Alaska was seen 39 days later in Hawaii, having traveled a distance of 2,800 miles.

Brown Bears: This famous mammal is very much a part of the natural world in Alaska. Brown bears and grizzly bears are technically the same species, *Ursos arctos* (although the brown bears on Alaska's Kodiak Island are classified as a distinct subspecies from those on the mainland). Brown bears resemble their close relative, the black bear, *Ursos americanus*, but are generally larger, with a more prominent shoulder hump and longer claws. Color is not helpful in differentiating brown bears from black bears because both species have many color phases. They weigh the least in the spring or early summer, gaining weight rapidly during late summer and fall and at their fattest just prior to denning. At this time, most mature males weigh between 500 and 900 pounds. Males may reach 22 years and females may live to 26. Brown bears consume a wide variety of foods, including berries, grasses, horsetails, cow parsnips, fish, ground squirrels, and plant roots. Except for females with offspring and breeding animals, bears are typically solitary, avoiding other bears except where food sources are concentrated, such as streams where salmon swim upstream to spawn.

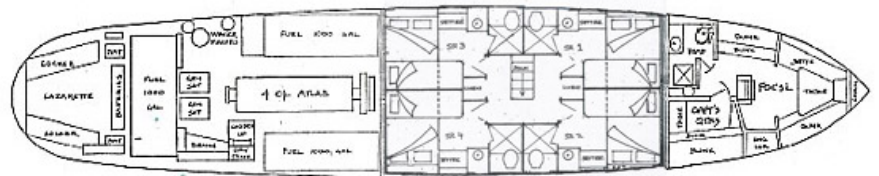
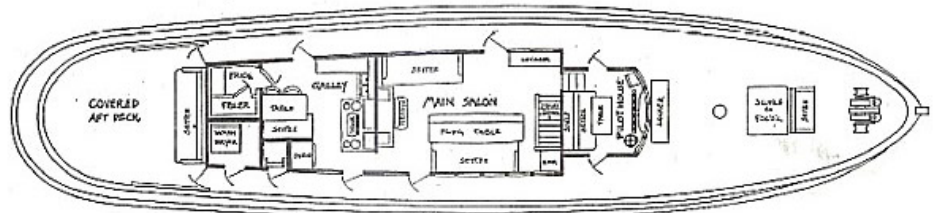
DAY 8 JUNEAU / DEPART

Arise early to make sure everyone gets to Juneau in time to make their connections to the outside world.

The Westward



We are delighted to invite you aboard this unique and historic 86-foot wooden vessel. A “gentleman’s yacht” designed specifically for exploration, she is ideal for discovering the wonders of Alaska, San Juan Islands, and the Sea of Cortez. You’ll find a lovely wood-paneled salon aboard—a great space where you can unroll the charts and share the route you’ve explored that day and discuss the adventures that lie ahead. There is a spacious covered back deck, the ultimate spot for watching marine life (think whales, seals, and more!) as you relax with a drink in hand. You won’t believe the meals that the on-board chef produces from the galley, including fresh-baked goods and wonderful fish from the bounty of the surrounding seas.



With the vessel's relatively small size, shallow draft, and yet powerful engine, you'll be able to explore remote coves and islands by day, and at night you can enjoy beautiful secluded anchorages. As you may have guessed, we absolutely love this vessel for the incredible adventures it makes possible, but do keep in mind that she is a relatively small vessel, and set your expectations accordingly. The cabins are well designed but will be far smaller than what you would find on a massive cruise ship. We find her intimate size (just eight passengers!) absolutely perfect.

Cabins 1-4

There are four guest cabins below deck, each with a double bunk below and a single bunk above, accommodating either couples or friends traveling together. Each of the cabins has its own private en suite bathroom with a sink, toilet, and shower.

Note: Since each double cabin also has both a double and a single bunk, it is possible for a family of three to book a cabin. We look forward to welcoming you aboard!

HISTORY

Launched in 1924 as the flagship of the Alaska Coast Hunting and Cruising Company, the vessel pioneered hunting, fishing, and adventure travel in remote regions of Washington, British Columbia, and Alaska for over 20 years (including serving such VIPs as Bing Crosby, Walt Disney, John Wayne, and Marjorie Merriweather Post). During World War II, she served as a patrol boat off the California coast, then post-war was converted to a private yacht and charter vessel.

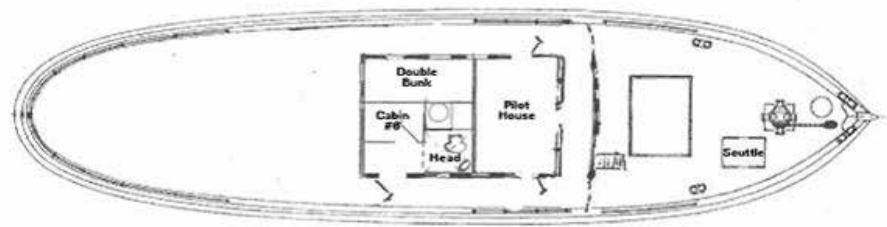
She has benefitted from continuous upgrades to her engine, systems, structure, and accommodations, including an extensive rebuild in 2005-2006 that created the four guest cabins she has today, and full below decks refit in 2015 that added private bathrooms to each cabin. She is listed with the US National Register of Historic Places.



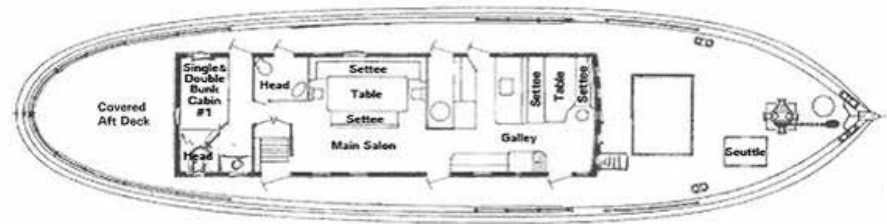
The Catalyst



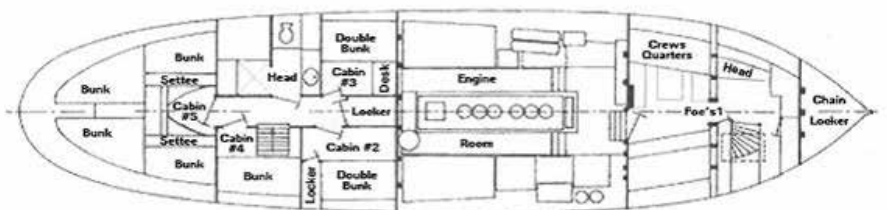
The 75-foot research vessel is a historic wooden boat that accommodates up to 12 guests. Constructed in 1932 as a marine research boat, she can maneuver around icebergs, follow whales, get close to glaciers, and tuck into tiny coves that most passenger vessels wouldn't even dream of approaching. Delicious meals, including freshly-caught seafood, are served by the chef in the warm, wood-paneled salon, and a fleet of kayaks (six doubles and three singles) on board add to the spirit of exploration and discovery.



Upper Deck/Pilot House



Main Deck



Below Deck

Cabin 1

Upper deck, private bathroom with shower. Double bunk (49" x 80"), single pull-down upper bunk (32" x 74"), with door to the deck, one opening porthole. Sleeps two to three.

Cabin 2

Lower deck, forward starboard side, private bathroom with shower. 6'10" x 7'0". Double bunk (50" x 78"). Four drawers under bed, hanging closet, storage closet, bookshelf, two non-opening portholes. Sleeps two.

Cabin 3

Lower deck, forward port side, private bathroom with shower. 6'10" x 6'6". Double bunk (50" x 78"), two drawers, storage locker, two non-opening portholes. Sleeps two.

Cabin 4

Lower deck, aft starboard side. 6'10 x 7'0", less 4' x 2'6" companionway. Single bunk (43" x 84"). Storage under gear hammock, one non-opening porthole. Sleeps one. Shared bath.

Cabin 5

Lower deck, aft cabin. 13'0 x 13'0". Two single bunks, one double bunk. Two bench seats with storage underneath, six opening portholes, four non-opening portholes. Sleeps two to four. Good for families. Shared bath.

Cabin 6

Behind pilot house. Double bunk (50" x 78"). Private entry from outside of pilot house, private head and shower, drawers and storage space, bookshelf, opening porthole and windows. Sleeps two. Accessible only by ship ladder.

Note: Cabins 4 and 5 share one washroom with shower. There is a second head on the upper deck next to the main salon. The Crew has their own head and shower deck below.

HISTORY

The ship used for cruising Alaska's Inside Passage was the University of Washington's first oceanographic research vessel. In 1932, Thomas G. Thompson, then Professor of Chemistry, began a personal crusade to establish a school of oceanography at the university. With the help of a \$60,000 grant from the Rockefeller Foundation, he started both the school and the construction of the boat. The vessel was designed by Roland and Strickland, prominent Seattle naval architects. Every aspect of her construction, from the location of the engine to the size of the vessel, was centered around the needs of the laboratory scientists. As a result of her careful design, the ship was the most state-of-the-art research vessel of her time. She took her maiden cruise through the Inside Passage and across the Gulf of Alaska, then spent the next 11 years collecting data, primarily in Puget Sound. The information collected from her decks in the 1930s forms the foundation for today's understanding of the region's water quality.

The bombs that fell on Pearl Harbor during WWII soon had effect on the ship. In 1942, Dr. Thompson offered her to the Navy to help in the war effort. The Navy conscripted the vessel and mounted a machine gun on top of her pilot house and racks of depth charges on her stern. She spent the war years patrolling the Aleutian Islands for Japanese submarines.

After the war, the Navy sold the ship and she was purchased by an Alaskan mining company and was handsomely refit. The main house was moved forward and the wheelhouse was placed atop it. Hatches, fore and aft, were created to access new holds for carrying tungsten ore. She hauled ore south to Seattle, but also carried supplies and, perhaps more importantly, guests north through the Inside Passage. After all that effort, the company had the boat for only two years, but every owner since has benefitted from the beautiful work they did.

Over the next 40 years, the vessel was owned by a few lucky mariners. The waters of Alaska, Baja California, and Hawaii have all passed beneath her keel. Now she has been restored to her original purpose, learning about the oceanic world. Only this time, it is adventurous travelers, not research scientists, who benefit from her mission.

Pricing

CATALYST

DEPARTURES	CABINS 1 & 6 PRIVATE BATH	CABINS 2 & 3 PRIVATE BATH	CABIN 4 (SINGLE) SHARED BATH	CABIN 5 SHARED BATH	CHARTER
Jul 1-8, 2025	\$7,900	\$7,750	\$7,750	\$7,650	\$85,650
Jul 10-17, 2025	\$7,900	\$7,750	\$7,750	\$7,650	\$85,650

WESTWARD

DEPARTURES	CABINS PRIVATE BATH	SINGLE OCCUPANCY	CHARTER
May 6-15, 2025	\$8,750	\$13,125	\$70,000
May 17-26, 2025	\$8,750	\$13,125	\$70,000
Jul 21-28, 2025	\$8,663	\$12,995	\$69,304
Jul 30-Aug 6, 2025	\$8,663	\$12,995	\$69,304

To offer the lowest possible cost, our trips are priced according to the number of participants on the trip. All costs are per person, based on double occupancy. There is one single cabin with no single supplement available aboard the *Catalyst*. If you wish to reserve any other cabin for single use aboard the *Catalyst*, or aboard the *Westward*, you must pay a single supplement fee. Please call for details. Please note that Wilderness Travel staff, or guests of Wilderness Travel such as travel writers, photographers, or leaders-in-training, are not included in the tier pricing count.

CURRENCY EXCHANGE RATE

Because the prices published for our program are set so far in advance of the trip dates, we are occasionally faced with exceptional cost increases and/or currency fluctuations that affect the actual cost of running the trip. In most years, no price changes are necessary. However, we do reserve the right to raise or lower the trip price if there is a significant change in costs or exchange rates. If this is the case, your final invoice will reflect the difference in trip cost.

TRIP COST INCLUDES

- Expert leadership of a Trip Naturalist and Captain
- Accommodations aboard a 75-foot research vessel or historic 86-foot vessel (depending on itinerary)
- All meals included
- Beer and wine
- Kayaks, paddles, radios, PFDs (life jackets), and boat safety gear

TRIP COST DOES NOT INCLUDE

Airfare to/from points of embarkation and debarkation of the boat, any meals not specified after each itinerary day, accommodations in Juneau, travel insurance, optional gratuities to leaders or staff, additional hotel nights made necessary by airline schedule changes or other factors, expenses such as immunizations (if any), and other expenses of a personal nature.

PAYMENT SCHEDULE

At time of reservation: 20%
100 days prior to departure: Balance

CANCELLATION AND TRANSFER FEE SCHEDULE

Minimum fee: 50% of deposit
91-150 days prior to departure: 100% of deposit
90 days or less: 100% of trip cost
*Please note that this differs from our regular catalog departures.

TRAVEL INSURANCE

We highly recommend you purchase travel insurance. You can take advantage of a comprehensive Travel Protection Plan designed for Wilderness Travel by Travelex, or purchase other insurance on your own. See our website for details:

www.wildernesstravel.com/insurance

Arrival & Departure

Upon confirming your trip reservation, we will send you a Welcome Packet that includes a list of documents (passport, visas, etc.) required for your trip. Please feel free to call if you would like this information before making your air arrangements.

If you have booked extra services before or after the trip, an Extra Services Confirmation will be sent with your Final Documents.

ARRIVAL & MEETING PLACE

The Expedition Vessel
Juneau, Alaska

Suggested Airport: Juneau, Alaska (JNU)

Suggested Date & Time: anytime prior to Day 1

Meeting Place: You may board the boat at 12:00 pm on Day 1, and **MUST** be on board by 12:30 pm as the boat will depart the dock at 1:00 pm from Juneau's Auke Bay Marina. We highly recommend arriving a day early in Juneau to avoid the possibility of missing the boat (an "on your own" expense).

DEPARTURE

Juneau, Alaska

Suggested Airport: Juneau, Alaska (JNU)

Suggested Date & Time: Day 8 anytime after 12:00 pm

You will arrive at the dock near Juneau by 10:00 am on Day 8 for disembarkation.

AIR TRAVEL

You are responsible for making your own arrangements for flights to Juneau and return. Air service into Juneau is available on Alaska Airlines, with multiple flight arrivals every day.

Alaska Airlines

www.alaskaair.com

1-800-252-7522

There are many online consolidators for booking travel, but for more personal help arranging air transport, you can contact Exito Travel at 970-818-8459 in the US or Canada. They are very adept at putting flight itineraries together, to even the most far-flung places. More information can be found on Exito's website at www.exitotravel.com.

Depending on your routing, it may be necessary to depart from your hometown a day prior to Day 1 of the trip itinerary. The name on your airline ticket must exactly match the name on the government-issued photo ID you plan to use while traveling.

Please do not purchase your tickets until you are confirmed on the trip. Once your tickets have been purchased, please send us a copy of your airline schedule. It is your responsibility to ensure your flight times coordinate with the arrival and departure logistics for this trip.

EXTRA HOTEL NIGHTS IN JUNEAU

For extra hotel nights in Juneau, you have many options including the following:

Alaska Capital Inn. 888-588-6507,

www.alaskacapitalinn.com

The Prospector. 907-586-3737, www.prospectorhotel.com

The Westmark Baranof. 800-544-0970,

www.westmarkhotels.com

Silver Bow Inn B&B. 800-586-4146,

www.silverbowinn.com

What to Expect

WHAT THE TRIP IS LIKE

This trip is Level 1+, easy to moderate, according to our trip grading system. The expedition vessel serves as a mobile base camp. You'll explore remote coastlines and fjords by day, then enjoy the comfort of the ship in the evening for good food, fine company, and a comfortable bunk. With just a few hours of cruising each day, there is plenty of time for walking, wildlife watching, or sea kayaking all in the company of an on-board naturalist who shares insights into the local botany, natural history, and native culture.

You should be ready for a variety of weather conditions. Layered clothing works best in the changing weather conditions typical of the Pacific Northwest Coast and Southeast Alaska. Layers are easier to pack and more versatile than a single heavy coat. Don't bring down jackets or ski clothes (they don't dry well in the damp climate). Good rain gear is essential; it will enable you to remain comfortable in the wind or rain. Bring your high rubber boots (or use the ones provided on board) for wading and for use in the kayaks and small boats (you will wear these everywhere you go).

No previous kayaking experience is required. Unlike whitewater kayaking, sea kayaking skills can be learned quickly and easily. The waters of the Inside Passage are protected from the open ocean and are generally calm. It is not the intention to kayak on stormy days or when sea conditions are truly "rough" with high winds and waves (such occasions are infrequent in these waters during the summer). Nevertheless, unpredictability is the rule for the weather in Alaska, and good kayaking weather throughout cannot be guaranteed. And with such a comfortable "mother ship," you can always opt out of any kayaking or hiking to enjoy a cup of hot chocolate and the great views from on board. Please note: Climbing a ship's ladder to access skiff and kayaks during excursions is required.

Complimentary beer and wine is offered on board. You are welcome to bring any special wines, liquors, and mixers you enjoy. Soft drinks, coffee, and tea are always available.

AVERAGE DAILY MAX/MIN °F					
	MAY	JUN	JUL	AUG	SEP
Southeast Alaska	50/36	56/43	59/47	60/46	55/41

RAINFALL - INCHES					
Southeast Alaska	9	6	8	11	18

WEATHER

Be prepared for temperatures ranging from the low 30sF to a high of 70F. Southern Alaska has a marine climate, which means rain is to be expected at some point on every trip. The rain itself is often a gentle mist, casting an aura of magic and mystery over the land. We hope for sunshine but recommend that you plan for wet, cool weather. You will be comfortable as long as your rain gear is adequate! Calf-high rubber boots are a necessity.

CHOOSING THE RIGHT TRIP

Adventure travel often involves exotic destinations, unusual levels of physical exertion, or activities you may not have participated in previously. We work hard to help you choose the right trip for you, paying attention to your individual interests, abilities, and needs. If you have questions about the level of comfort or any of the activities described in this itinerary, please call Wilderness Travel at 1-800-368-2794 and ask for the North America Manager or email us at northamerica@wildernesstravel.com.

REFERENCES

We'd be happy to put you in touch with a past client that has traveled with us on this or a similar trip.

TOUCAN CLUB

We're proud to have one of the highest rates of repeat travelers in the business! The Wilderness Travel Toucan Club was established to reward our travelers for their loyalty. For details, please visit the Toucan Club page of our website at www.wildernesstravel.com/resources/toucan-club.

VISIT OUR WEBSITE

At www.wildernesstravel.com, you can book your trip online or find out about added departures, last-minute deals, and one-time Limited Edition adventures that aren't listed in our catalog. You can also access our complete library of detailed itineraries filled with enticing photos and videos, read bios of our Trip Leaders, find descriptions of trip accommodations, and check real-time availability of any trips that interest you.

Toucan Club Rewards & Discounts

We are very proud to have one of the highest rates of repeat travelers in the business, and have established the Wilderness Travel Toucan Club to reward you for your loyalty. For more information, please visit the Toucan Club page of our website at www.wildernesstravel.com/toucan.

Here's how it works:

YOUR FIRST TRIP

As a first-time traveler, you receive a lightweight Wilderness Travel T-shirt and set of durable WT Luggage Tags. On subsequent trips, we're happy to send you a new WT T-shirt and set of Luggage Tags by request.



T-SHIRT FRONT

YOUR SECOND TRIP

A top quality Wilderness Travel stainless steel water bottle by Klean Kanteen and a cozy Wilderness Travel fleece vest by Patagonia (\$100 value).



T-SHIRT BACK

YOUR THIRD TRIP

A versatile Wilderness Travel R-1 pullover by Patagonia (\$130 value).

YOUR FOURTH TRIP

Discounts on the cost of your trip begin! You receive a 4% discount on the tour cost.

FIVE AND MORE TRIPS

You receive a 5% discount on the base trip cost. On your sixth trip, you receive a 6% discount, and so on up to your 10th trip. The maximum discount is 10%, with a ceiling of \$500.

Note: Due to special pricing considerations, Toucan Club discounts do not apply to our Private Journeys or Special Events. However, your participation on these trips does count toward your Toucan discount on future departures of Wilderness Travel's regular adventures.

TERMS & CONDITIONS

Toucan Club travel discounts cannot be used in conjunction with any other discount, unless otherwise specified. Discounts are deducted from the base trip cost and shown on the final invoice. The base trip cost is the main land/tier cost and does not include single supplement fees, extensions, internal airfare, or other additional charges. Bonus gifts (T-shirts, luggage tags, vests, water bottles, and pullovers) will be mailed approximately three weeks prior to trip departure. Terms and conditions of Toucan Club bonuses are subject to change or cancellation at the discretion of Wilderness Travel, Inc.



PATAGONIA SYNCHILLA FLEECE VEST
+ KLEAN KANTEEN 27OZ WATER BOTTLE



PATAGONIA R1 PULLOVER

Travel Notes



WILDERNESS TRAVEL HAS BEEN AWARDED:

Best Travel Specialists in the World: *Conde Nast Traveler*, 2024, 4-time winner

World's Best Tour Operators: *Travel + Leisure*, 11-time winner

Best Wildlife, Hiking & Walking Trips: *AFAR Magazine*, 3 years in a row

Best Adventure Travel Companies: *USA Today*

Trip of the Year: *Outside Magazine*, 9-time winner

50 Tours of a Lifetime: *National Geographic Traveler*, 9 years in a row

Best Adventure Travel Companies: *National Geographic Adventure*, 3-time winner

Please be advised that California has established a Travel Consumer Restitution Fund under the California Seller of Travel Law that took effect January 1, 1996. This fund is designed to protect consumers from unscrupulous practices by discount airfare ticket sellers or air charter operators. Unfortunately, this law does not cover non-California residents and, even in the case of California residents, it does not cover any foreign travel where the foreign "providers of transportation or travel services" are not in compliance with the Sellers of Travel Law (compliance being defined as registered as a Seller of Travel in California and a participant in the Travel Consumer Restitution Fund). Thus none of Wilderness Travel's tours qualify and we are required by law to advise each client that they are not covered by the California Travel Consumer Restitution Fund. California law requires sellers of travel to maintain a trust account or bond. This business has a trust account. California Seller of Travel #100769640

While as accurate as possible at the time of printing, this itinerary should be considered an approximate indication of the schedule and scope of activities and trip routing, rather than an inflexible schedule of events; it is subject to change due to circumstances beyond our control. This trip is subject to the Limitation of Liability and all the terms and conditions as detailed in the General Information section of the Wilderness Travel Catalog.

Revised: November 13, 2024 9:48 AM



1102 Ninth Street, Berkeley, CA 94710

800-368-2794 • 510-558-2488

www.wildernesstravel.com • info@wildernesstravel.com