

RT-FSM 'COMMUTE-IN' ENDS

(Here is the exclusive story of the Rapid Transit - Fast Speed Movement. At the present time, rescue crews are working to untangle and free the 115,000 persons still trapped at yesterday's press conference in the Greek Theater.

Our reporter is the only escapee from the area; here is his account of the press conference and of his dramatic escape from the Greek Theater.)

The campus has returned to normal. Sproul Hall is once again functioning at its usual pace.

At an afternoon press conference called yesterday by the Rapid Transit - Fast Safe Movement (RT - FSM), the reasons for the occupation of Sproul Hall last week were explained.

Scoop (I Want Action Not Issues) Headline, press director, explained that the test was designed to determine the usefulness of the building and of its facilities as the South Berkeley passenger station of the proposed Rapid Transit System.

He stated that Sproul Hall was chosen because of its central location on the campus - thereby providing convenient facilities for students, faculty, and staff.

ADVOCACY

All semester long, the RT-FSM has been seeking to advocate the use of campus facilities for the passenger station. We feel that the academic community stands to receive the greatest benefit from the location. As a last resort, we were forced to make a test to prove our point.

We wanted rapid transit near campus in Berkeley, he explained; and sought to advocate it. But the University regulations stopped us. We weren't allowed to collect funds or to hold meetings on campus. So being good law-abiding students, we decided that our only solution was to press for the location of the station on campus.

RAT CENTRAL

An extensive survey of the campus by our Rapid Transit (RAT) CENTRAL indicated Sproul Hall to be the most suitable building.

Finally after 3 weeks of negotiations and trying to dodge the rules, we got 8 students permitted to conduct a test of the facilities. The press and photographers came by the dozens from all parts of the state, Scoop indicated.

Word quickly spread that the test was on. Supporters of the RT-FSM - 400 strong - went with them and demanded to take part. The dawn of the next day found 500 students covering the 4 floors of Sproul Hall - and this was only a test.

EXCLUSIVE

RAIL-IN

The next day, students attempted to lay down a single track of rapid transit rails in the mall, as a show of their support for the system. Track Trainberg, leader of Students Pushing University Rapid Transit (SPURT), was arrested for leading a "rail-in" without a permit from the Dean's Office.

continued on page 2

extra!

Sarong Plans Sit-in at Spral

According to highly placed sources in the hierarchy of Administratia - the tiny nation recently rocked by turmoil after months of rioting, sit-ins, and civil disobedience - former government leader Wayward Sarong will attempt to regain power.

The island, located somewhere in the Sea of Berkeley, is divided into three states: Liberalia, on the left; Conservatia, on the right; and Apathia, the largest of the three, in the middle.

The initial controversy centered around the demands of the insurgents to set up card tables in the city square. They maintained that the nation needed the relaxation and mental stimulation which black jack, poker, and other games of chance could provide.

3 DAY SIT-IN PLANNED

The press office of the Free Sarong Movement (FSM - what else?) released the following statement:

In a bid to regain his position, Wayward

continued on page 2

Satirical Edition **Less One**

Student Political Activity Comm. Report

Last November 10, Charlie Powell, ASUC President, set up a 5-man committee of the Senate with himself as chairman, to meet and discuss the entire matter of student political activity on campus.

Friday, the report of the Student Advisory Committee on Campus Political Activity was released. It contained the following recommendations:

continued on page 6

2 RT-FSM continued from page 1

Students responded by covering the area between Sproul Hall and the Student Union with rail tracks so that the police car (containing Trainberg) was unable to move.

STANDING BY

Some 30 hours later, with picks and shovels and bulldozers at the ready, workmen stood by awaiting orders to remove the rails.

RT-FSM Born

This was October 2, the day the Rapid Transit Fast Safe Movement was born.

During the succeeding weeks, Headline continued, RT-FSM met with setback after setback. It had become clear to thousands of students that the Administration was not acting in the spirit of the agreement.

The following month, four RT-FSM leaders received letters threatening them with disciplinary action for their efforts in conducting the "rail-in" some two months previous.

Finally we had mustered enough support for the movement, the RT-FSM decided to conduct a test of the facilities. 1500 students walked into the building - much as they would on that fine future day when the trains would run right through the campus.

SOUTH BERKELEY PASSENGER STATION

Sproul Hall was temporarily declared to be the South Berkeley passenger station of the Bay Area Rapid Transit System.

TIMETABLE CENTRAL - VETERANS ALL

In anticipation of the foul weather and inevitable mechanical difficulties which we knew could hold up the trains at peak hours, we provided our volunteers with a quiet study hall on one floor, films, reading material, and cheese sandwiches for nourishment.

Members of our TIMETABLE CENTRAL - all with 3 or more years' riding time on the IRT (New York subway- for the uninitiated)- facilitated these preparations.

TIME TO LEAVE - WE WON'T GO

Our original plan called for the test to end at 1 a.m.; thereby allowing the University to resume its normal operations on the following morning.

Came the time to leave, and they would not go. The test called for them to hurry out the basement exit and take shuttle buses to outlying points such as Santa Rita, Oakland, and San Lorenzo to test the readiness of these points to accommodate commuters.

"We protest. You can't take us from these comfortable surroundings. We demand our freedom of space."

Volunteers, listen. We must clear the building by 6 a.m., or the great Legi Sla Ture will be angry and wreak havoc on us all. Oh that it should find that the Big U has been used for such a purpose. You must leave.

"WE WANT FREEDOM OF SPACE"

"No, no", they shouted. We shant. Freedom of space must be unlimited. No restrictions.

The situation was becoming desperate, Scoop related. Something had to develop to prevent

DON'T STOP HERE. GO RIGHT UP

a real crisis. Suddenly from the midst of the crowd on the second floor - up jumped But I'll let him tell it.

At this point, Marapido Transvio, spokesman for the RT-FSM, gave the following statement: "WE have long been dissatisfied with the local transit facilities in the area - both on and off campus. This campus is getting much too large, and spread out. Look at this campus map. Steve, would you hold up the bottom of the map? Let me have the megaphone, please. Steve, can you hear me - at the rear of the theater? Hold up the map. That's better.

There gentlemen, you see our problem. Clearly no provisions for free and unlimited contentment of passengers using the current facilities. When the machine won't operate for you, it must be brought to a halt.

OPPOSITION SPEAKS

A spokesman for Students for Local Undependent Transit (SLUT) claimed that the existing transit system has provided citizens with unlimited opportunities for free contentment. If the RT-FSMers don't like the set-up, let them go somewhere else.

He attributed their activities to the work of outside influences. We know that 15% of their group were original members of the

At this point, the squeeze of the crowd in the Greek Theatre became so great that this reporter was popped out to the Lawrence Radiation Laboratory area, landing on top of a four-star general. Catching the handy Hill bus, I made it back to phone in my story. A fortunate turn of events. For nothing yet has been heard from the Greek Theater for three days. No one has been able to get in or get out of the area.

It was inevitable; those press conferences kept getting larger and larger. First the corner of the student union, then Pauley Ballroom, even Harmon Gym proved too large. Then the big move up the hill. And now the waiting, waiting, Have you seen them yet?

SARONG IN ADMINISTRIA cont'd. from page 1

Sarong will lead 2000 Administria citizens and members of Students for Lull and Ordinary (SLO) to a three day sit-in at Spral Hull (Administrian for Joy House II) in a bid to regain power.

He feels that since the methods used by his opponents proved so successful, they should be utilized to the fullest.

His chief assistant, Red Tape, added that a rally will be held in front of The Spral Hull at 12 today. Featured at the rally will be Lawrence Welk, his accordion, and his Administrian orchestra, The Animals and other novelty groups.

Administria officials had no comment.

The Gate is on sale on the North side at
The Store 1854 Euclid
throughout the week. Hours varied.

Classified Advertising. 5¢ a word. 1 week.
20 word minimum. Deadline Thursday before publication date. Bring to salesman at Bancroft and Telegraph.

The Gate published every Monday. Bob Weinzeimer,
Editor and Publisher. p.o. box 1281 Berkeley 1,
Calif.

CRAZY CAMPUS CAPTIONS

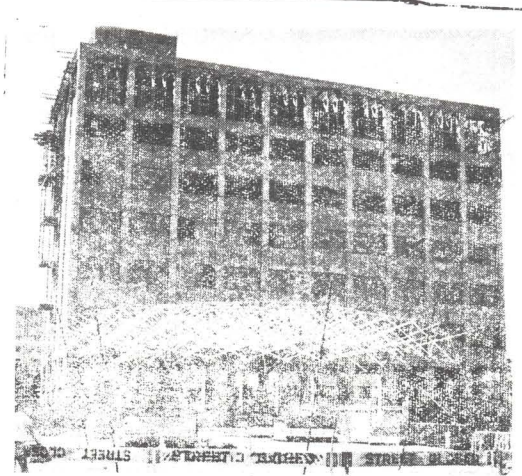


STEERING COMM. HOLDS
FINAL MEETING

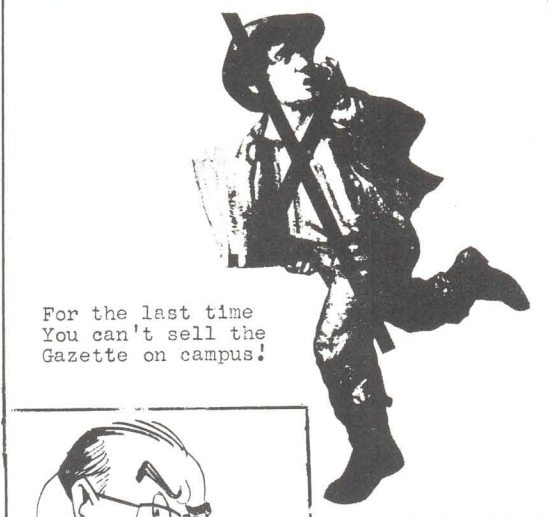
Back From N.Y.!

Smart Boy That Savio-He's Going Places!

IBM
Machine?



JOY HOUSE



For the last time
You can't sell the
Gazette on campus!

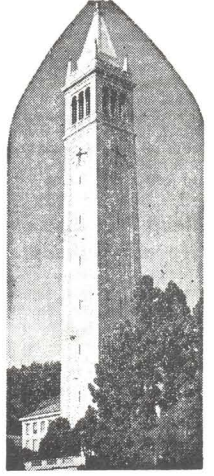


WHAT, GIVE MY MONEY
TO THOSE AGITATORS!



FSM press
conference

Whatever
it is...



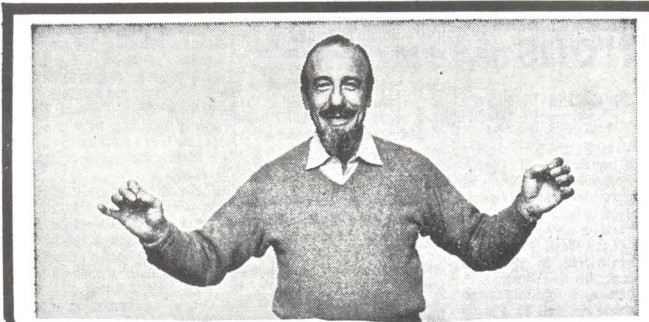
... you
can
sell it
with a
**Chronicle
Want Ad!**

The
University?

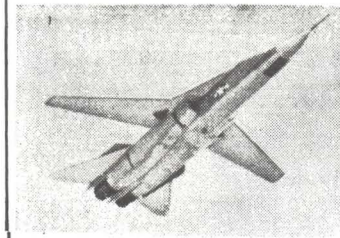


U.C. Gridders Hold Spirited work-out

" I KNOW WE ONLY HAVE AUTHORITY IN NEW YORK - BUT THE CHIEF SAYS THEY NEED US IN BERKELEY."



"On The First of the Semester, The Dean said to me,..."



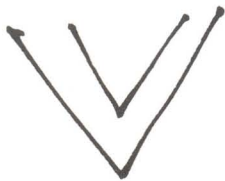
**FOR THE
MAN ON
THE MOVE**



YES, ART. I'D LOVE TO BE AT YOUR RALLY!

Ehlers

*at
Venus
6429 Telegraph
Oakland, Calif.*



GA
GRAPHIC ARTS

Ed Kirwan

2440 Bancroft Way
Berkeley, California
Phone 849-4452



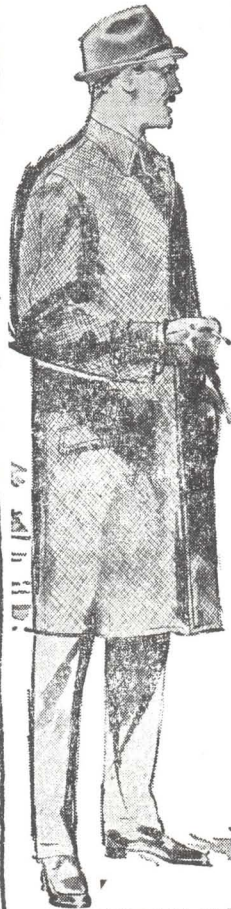
BERKELEY
DEC. 3
DEAR RAOUL:
'You'll Never
Believe What
I Saw Today...

NEXT
ISSUE
FEB.

8



U.C. COEDS HOLD DEAD WEEK PARTY



IS THIS MAN WATCHING YOU?

LOCKOUT ESTABLISHED FOR MEN

Effective February 1, 1965, All University approved men's residences will be required to establish lockout procedures. The order, which is expected to bring strong protests, is designed to put responsibility for proper conduct where it belongs, an administration spokesman declared.

Beginning on the afore-mentioned date, all men living in University-approved housing must give the time he leaves and his destination. Then he must sign back in.. Lockout will be 1 a.m. during the week and at 2:30 on weekends.

With this policy change, University co-eds will no longer be saddled with this cumbersome device which has long relegated them to a second class position because of their sex.

"This ruling marks the University's departure from the double standard", commented Miss Chaste Straight, long an advocate of such a policy.

Miss Straight, who is the campus representative for LAST (League Against Social Temptations) has proposed further that counselors be provided to instruct our young men in the proper attitudes and judgements for making mature decisions.

"Our goal is to make students safe from students, she emphasized. That Monarch of the College Dailies misquoted me when they printed that I said we advocated making students safe FOR students.

(REPRINTED FROM VOL. 1 NO. 13)



WE

STILL SUPPORT

FSM

2215 Shattuck

841-3601

Advertisers' Directory

As You Like It 2435 Dwight Way TH 8-3495 Portraits, paintings, sculpture, handwrought jewelry, leather crafts.

Avalon Art Supply 2805 Telegraph 845-2453

Casa de Eva 2826 Telegraph Ave. 845-9091 authentic Mexican food. Open 11 a.m. TO 10.00 p.m.

Charo, Inc. 2215 Shattuck Ave. 841-3601 In

Downtown Berkeley. Direct Imports

Discount Records 2309 Telegraph TH 9-3332

Ed Kirwan Graphic Arts 2440 Bancroft 849-4452

Green Light Copy Service 2634 Ashby Ave. just

off College. Parking available. Clement Druz.

Laval's Gardens 1834 Euclid Ave. 843-5617

The Lunch Box Campus Arcade (off Ban. below Tel.)

Re-opening soon. New ownership.

The Quest 1974 Shattuck Ave. Newly opened. A

Restaurant to grow with. Dinners. open 5-10 p.m.

The Store 1854 Euclid Ave. 841-9972 hours varied

MOTHER: New literature. Avant-garde as all hell. Surrealistic poetry - popart - whatnot 50¢: ASUC and Campus Smoke Shop (Bancroft & Telegraph). Limited Supply.

6 STUDENT COMM. REPORT cont'd from p. 1

- I. Content of Speech: There shall be no regulation by the University Administration of content of speech on campus.
- II. Regulation and Interpretation: There shall be established a permanent tripartite committee of students, faculty, and administrators to make, modify, and interpret all regulations pertaining to political activity, and to facilitate communication among the three groups. The faculty representatives shall be selected by the Academic Senate; the student representatives - half by the ASUC Senate and half by the student political action groups. (The student representation shall include both graduates and undergraduates). This committee, operating under block consensus, shall have final authority.

III. Procedure:

- a) Sproul Hall steps shall be established as a Hyde Park area with amplification equipment between the hours of 12 and 1 and after 4 p.m. (and at all other times without amplifications), at least until another Hyde Park area may be established in the upper plaza by the tripartite committee.
- b) If the administration deems necessary the presence of police at an on-campus function, the financial burden thereby incurred shall not fall upon the sponsoring organization or any of its members.
- c) To qualify as an "off campus" organization, a group must consist predominantly of students. Such groups shall have the rights to operate tables and to use University facilities (including office space in the Student Office Building).
- d) Publications of more than one page and not more than $\frac{1}{4}$ advertising may be distributed and sold by members of the campus community, including members of reorganized student organizations, at all meetings, tables, and Hyde Park areas.
- e) Within the Hyde Park areas, there shall required no advance notice from any speaker.

Voting members of the Senate committee include Charlie Powell, Jerry Goldstein, 1st vice-president, Dan Grisct senior rep-at-large, Frank Rossi, rep-at-large, and Mike Adams, men's residence hall rep.

Non-voting members of the committee are Lyman Porter, faculty representative, the chairman of Judicial Committee, and Wayne Hooper, alumni representative.

THIS ISSUE DEDICATED TO GERARD

In May of 1964 Gerard Legarge and his friend, Charlie LeCarr attempted a takeover of the ASUC IN BEHALF OF their group - The Underground Students Association (USA). By his careful examination of that cool little paperback CONSTITUTION, as approved by vote of the Student Body, Gerard found Article XIII which reads "If at any Senate meeting the number of association members is greater than that of Senators, representatives, and cabinet members, these said members shall take immediate control of the present duties and powers delegated thereto without further delay or inaction. Unfortunately, the coup was doomed to failure through a legal technicality.

For more details, see Vol. 1 No. 13 of the Gate, LAST semester's satirical edition.

REVIEW

DARK INTRIGUE

It is rare that one finds combined in one writer analysis that is scholarly and yet lucid. For this reason alone one should rejoice at the publication of Fred Look's new work. But there is much more. This book

Dark Intrigue: the Story of America's Radical Right, By Fred Look, Pere Marquette Press, 1965

will be the definitive work on the American right wing for as long as there is nothing better.

Look's subject has been examined before. Group Research has done yeomans service by showing that the lines of command of the right wing lead finally to the John Birch Society, and there are of course the investigations of the Internal Revenue Service which resulted in the repeal of the tax exemptions of organizations opposed to those principals of equality and justice on which this country was founded.

But Dark Intrigue goes beyond any previous study and reveals the truth that has before only been suspected. Look proves that right wing activists are paid agents of H. L. Hunt and United Fruit Company. The object of this plot is the conquest of South America. The two agents will then divide the continent, with Hunt getting oil lands, and United Fruit getting the rest for banana plantations.

Besides this revelation the book answers some important questions. I have often wondered how men who seem so intelligent could believe in things so ridiculous as the quantity theory of money or the "International Communist Conspiracy." This book for once and all discloses their hideous motives. This book should be read by anyone still so naive as to believe that conservatives mean what they say.

Donald Hackett

