

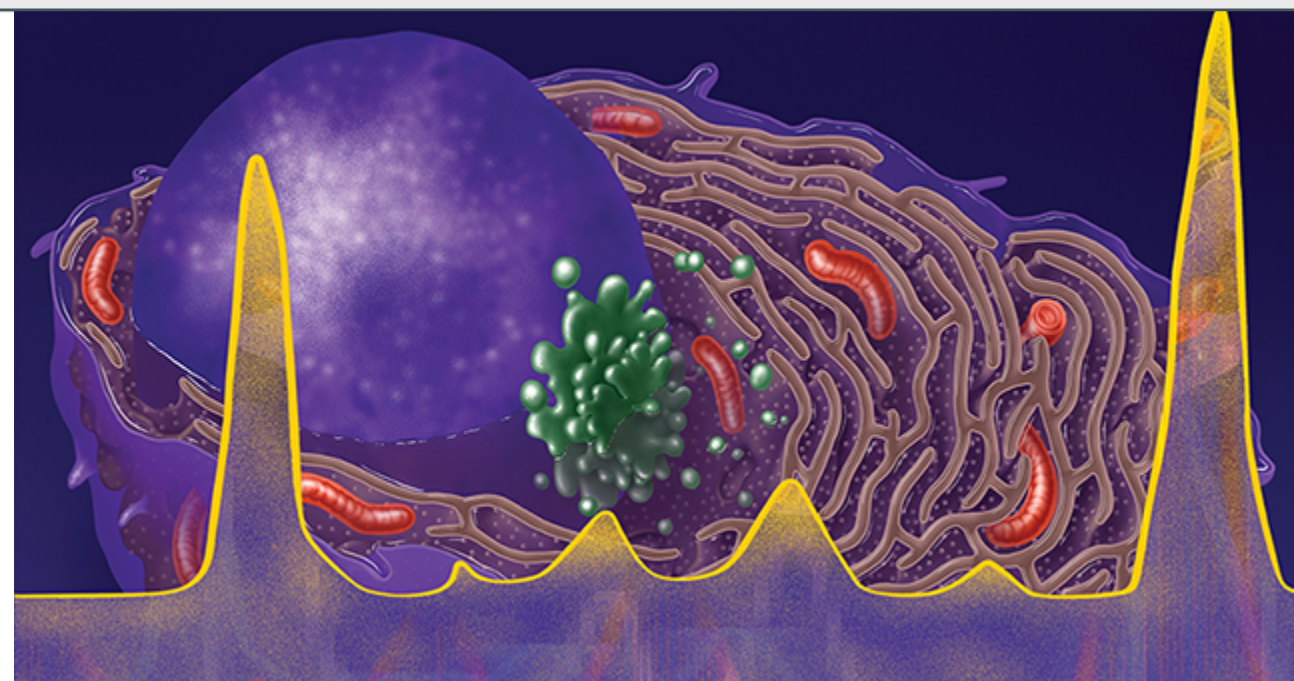
Proposed 2019 Treatment Algorithm for Myeloma

Friday, November 30, 2018
San Diego, California

Friday Satellite Symposium preceding the 60th ASH Annual Meeting & Exposition.

This activity is supported by educational grants from AbbVie; Amgen; Bristol-Myers Squibb; Celgene Corporation; Janssen Biotech, Inc., administered by Janssen Scientific Affairs, LLC; and Takeda Oncology.

Image: Copyright©2018 DNA Illustrations. All Rights Reserved



Myeloma: 2019 Algorithms

S. Vincent Rajkumar
Professor of Medicine
Mayo Clinic



Scottsdale, Arizona



Rochester, Minnesota

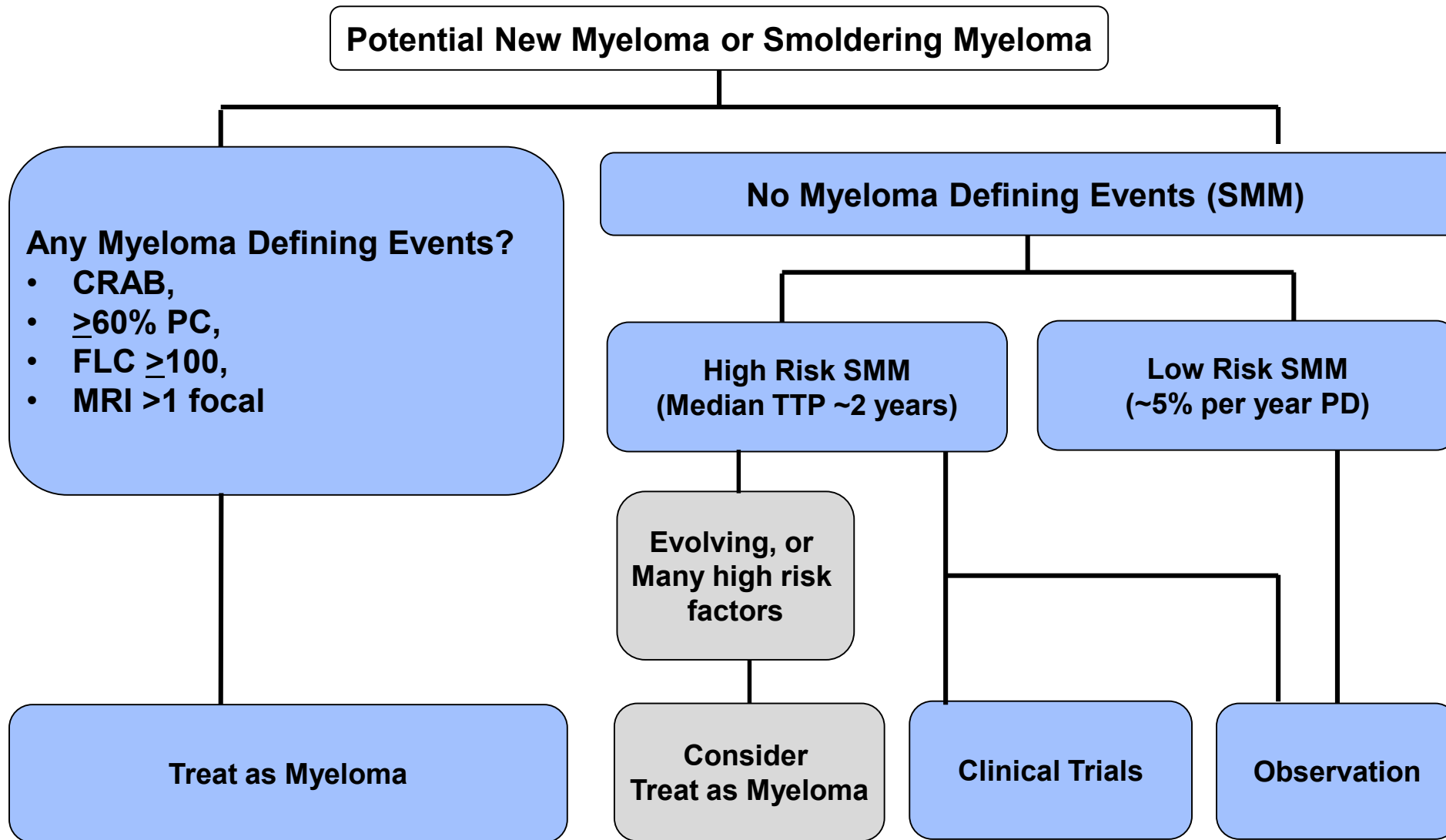


Jacksonville, Florida

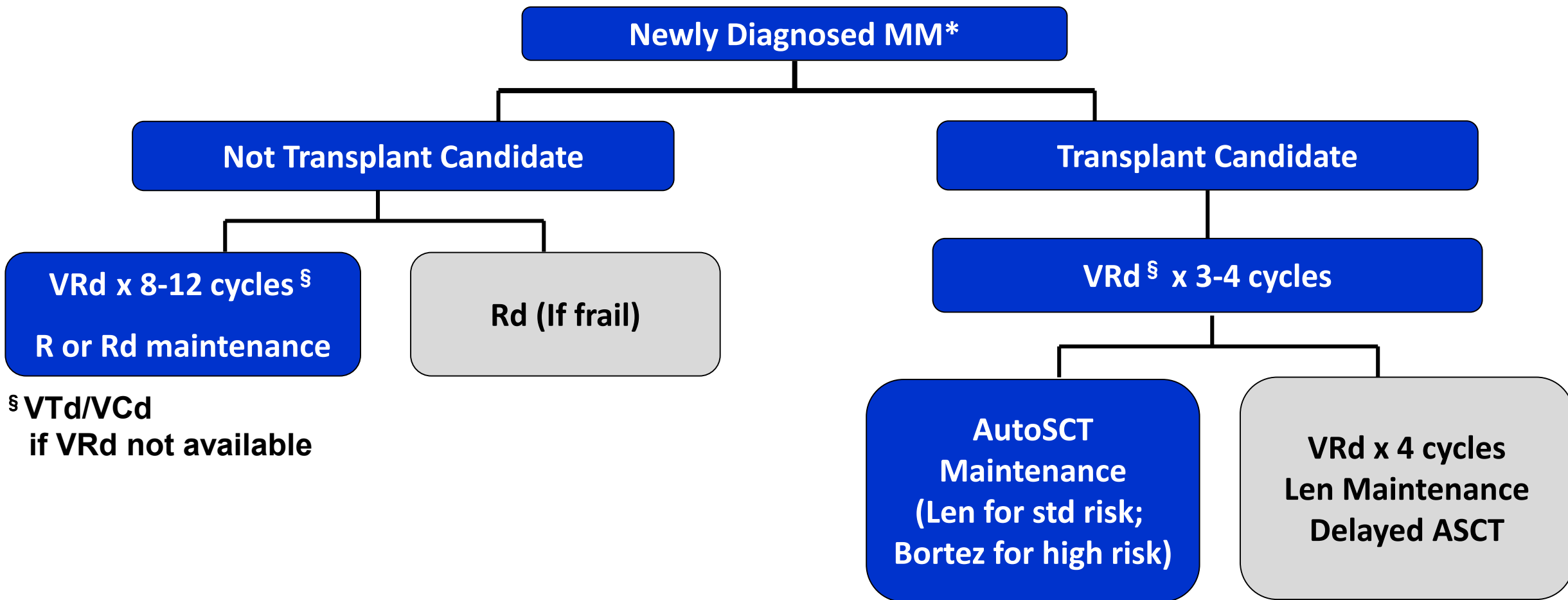
2019 Algorithms

- **Clinical Trials preferred**
- **Only commercially available options**
- **Assumes all drugs available**

When Should Treatment Be Initiated?

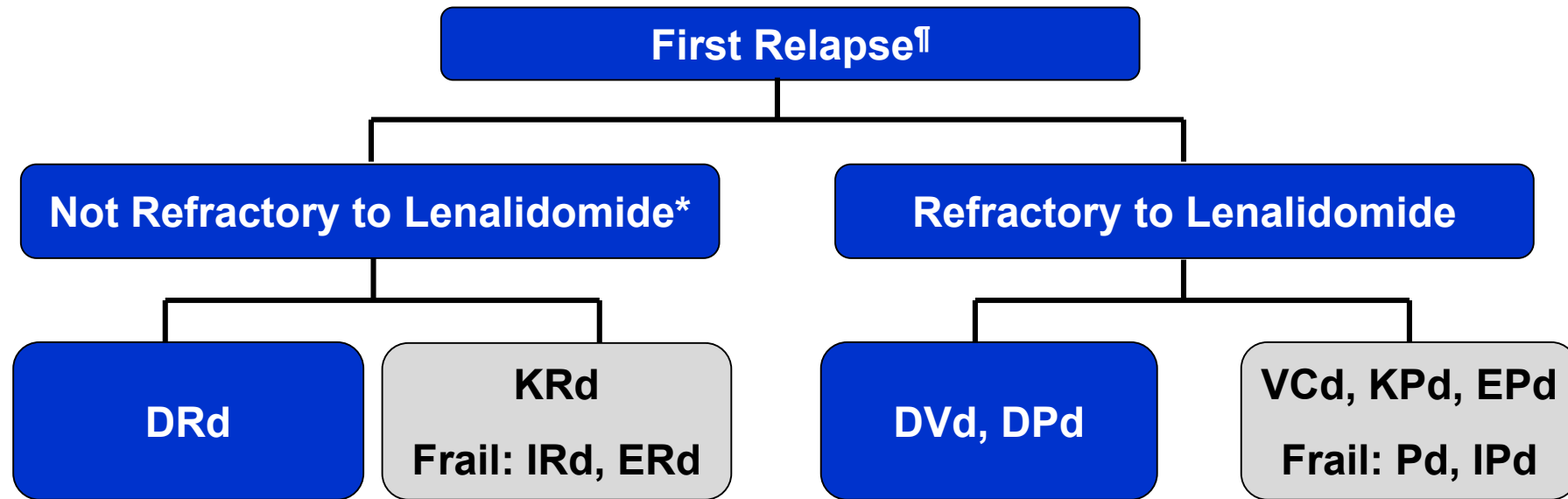


Myeloma: Frontline Treatment



§ VTd/VCd
if VRd not available

Myeloma: First Relapse



*Relapse occurring while off all therapy, or while on small doses of single-agent lenalidomide, or on bortezomib maintenance

[†] Consider salvage auto transplant in eligible patients

Myeloma: Second or Higher Relapse

First-Relapse Options



- Any first relapse options that have not been tried
(2 new drugs; triplet preferred)

Additional Options



- VDT-PACE like regimens
- Melphalan
- Venetoclax (t11;14)
- Bendamustine-based regimens
- Adding Panobinostat
- Quadruplet regimens



Go Online for More Educational Programs on Myeloma!

On-demand Webcast of this symposium, including expert faculty commentary (IMF link below)

Downloadable slides from this symposium (IMF link below)

Interactive Decision Support Tool for myeloma, with personalized expert recommendations for your patients with myeloma

Online programs on caring for your patients with myeloma



myeloma.org/videos/new-strategies-multiple-myeloma-care-next-steps-future

clinicaloptions.com/MyelomaTool

clinicaloptions.com/oncology/topics/Multiple-Myeloma

CLINICAL CARE OPTIONS®
ONCOLOGY