

# 6<sup>th</sup> Annual Comedy Celebration

benefiting the Peter Boyle Research Fund

## MYELOMA TODAY – Special Gala Report



On Saturday, October 27th, nearly 1,200 guests gathered at the Wilshire Ebell Theatre in Los Angeles in support of the IMF's 6th Annual Comedy Celebration benefiting the Peter Boyle Research Fund.

The Annual Comedy Celebration began in 2007, when event Chair Loraine Boyle, IMF Board member and wife of the late actor Peter Boyle, reached out

to IMF co-founders Susie Novis and Dr. Brian Durie with a profound desire to make a difference in the lives of people coping with multiple myeloma. Loraine established the Peter Boyle Research Fund, calling upon both her and Peter's friends to join her in raising awareness and money to find a cure. They answered her call without hesitation, and have been donating their time and talents to our cause ever since.

Ray Romano, the evening host whose support over the years has played an integral part in the success of the event, opened the show with his Everybody Loves Raymond co-star, Doris Roberts. The TV mother and son reminisced about their favorite moments on the show and fondest memories of Peter. Also appearing on stage that night were fellow comedians Jeff Garlin, Judy Gold, Gilbert Gottfried, Dom Irrera, and Fred Willard, who had guests laughing for 90 minutes straight. But the show-stopping finale was the incredible musical performance by Joe Walsh and his band, whose amazing set that left the audience screaming for more!

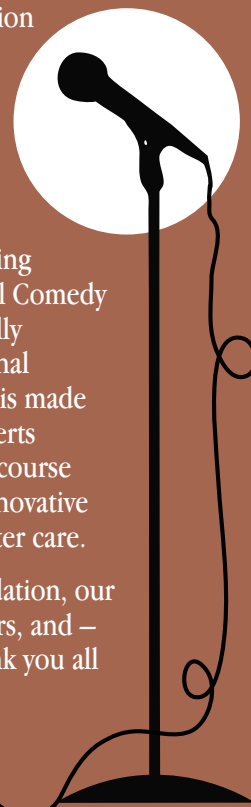
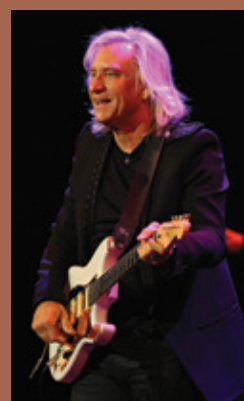
The event – complete with red carpet and paparazzi – also featured a dazzling silent auction with more than

100 items including a guitar autographed by Joe Walsh, fantastic travel packages, an assortment of Hollywood and sports memorabilia, and gift baskets from high-end boutiques and restaurants. When a small bidding war broke out over the autographed guitar, Joe Walsh himself generously agreed to donate a second guitar – effectively doubling the highest bid of the night.

After the show, the main dining room of the 1920's style Ebell Club was transformed into a lounge-chic after-party for VIP guests, who sipped champagne and sampled desserts while chatting and schmoozing with friends, colleagues, and members of the cast and other celebrity guests.

In only six years, the Annual Comedy Celebration has raised \$3.5 million for the Peter Boyle Research Fund. Loraine's efforts and the generosity of our presenting sponsors Celgene Corporation and Millennium: The Takeda Oncology Company, as well as many other corporate and individual sponsors, have supported numerous IMF ground breaking research initiatives. For example, as the Annual Comedy Celebration has grown, so has the IMF's globally collaborative research division - the International Myeloma Working Group (IMWG). The IMWG is made up of 160 of the most respected myeloma experts from around the world. They are charting the course to a cure, mentoring the next generation of innovative investigators, and improving lives through better care.

On behalf of the International Myeloma Foundation, our esteemed Board of Directors, Scientific Advisors, and – most importantly – the patients we serve, thank you all for supporting this wonderful event!



The sold-out event welcomed nearly 1,200 people, including celebrities and entertainment industry executives, myeloma patients and caregivers, and doctors and pharmaceutical company representatives. The 6<sup>th</sup> Annual Comedy Celebration raised almost \$600,000, bringing the total raised for the Peter Boyle Research Fund to over \$3.5 million, with all funds supporting the myeloma research program. The show brought tears of laughter to everyone’s eyes. We thank the celebrity comedians for donating their time and talent to this event and the cause it supports.



Celebrities being interviewed on the red carpet



(1) 6<sup>th</sup> Annual Comedy Celebration Host Ray Romano; (2) IMF President Susie Novis, Event Chair Loraine Boyle, and IMF Chairman Dr. Brian Durie; (3) Alex Meneses; (4) Lily Rabe; (5) Peter Gallagher; (6) Blythe Danner, Loraine Boyle, and Doris Roberts; (7) Jeff Lynne and Camelia Kath; (8) Gary Cole; (9) Phil and Monica Rosenthal with their daughter, Lily





Guests attended the fabulous cocktail party and silent auction before the show. Afterwards, VIP guests enjoyed coffee and desserts at the VIP Cast Party.



(1 & 4) Images from the Silent Auction;  
(2) Dr. Durie, Susie Novis, Ray Romano, Loraine Boyle, and Peter Gallagher; (3) Guests enjoying the VIP reception after the show;  
(5) Board Member Andy and Laurie Kuzneski;  
(6) Board Member Amy and Steve Weiss with Robert Morton; (7) Board Member Benson and Carol Klein; (8) Joe Walsh, Loraine Boyle, and Ray Romano; (9) Jenny and Robert Morton with Loraine Boyle; (10) Judith and Richard Voltmer; (11) Dr. Durie, Doris Roberts, and Susie Novis



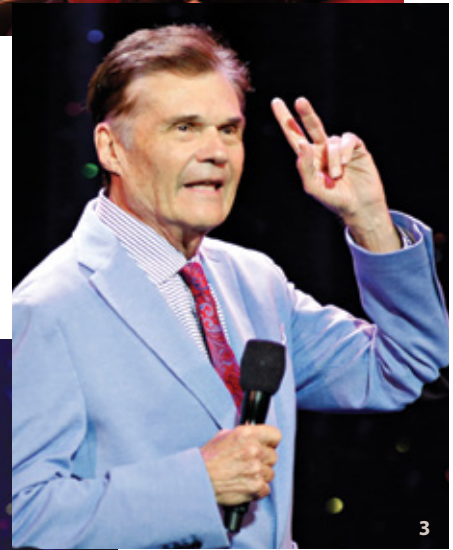


## THE SHOW!

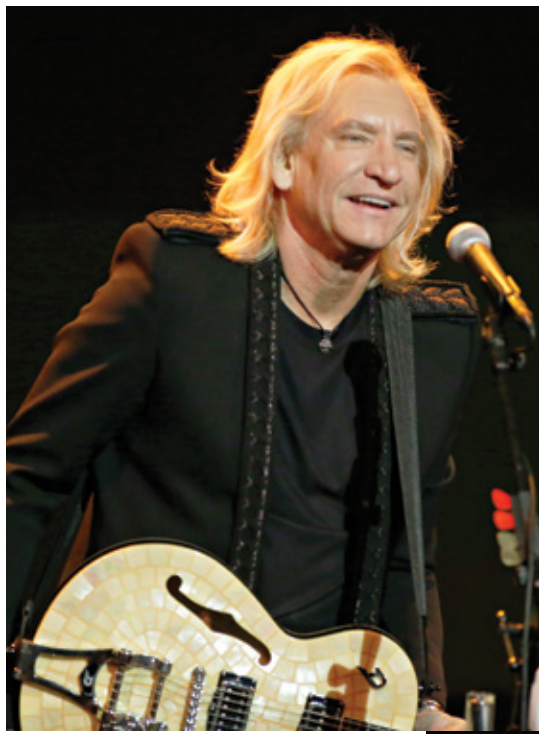
Over 1000 guests attended the sold-out comedy and music show. Many thanks to all the comedians and musicians that gave them a night of laughter and fond memories!



(1) The historic Ebell Theatre just before the show begins;  
(2) Ray Romano and Doris Roberts share a tender moment on stage remembering Peter Boyle;  
(3) Fred Willard; (4) Dom Irrera;  
(5) Ray Romano; (6) Jeff Garlin;  
(7) Judy Gold







*(this page)  
Joe Walsh  
and his band  
rock the house*





The IMF's partners in the pharmaceutical industry turned out in force! We were so pleased to see so many of our friends for a social occasion in support of myeloma research. We especially thank our presenting sponsors, Celgene and Millennium: The Takeda Oncology Company. Please see next page for a full list of event sponsors. Their participation made the event the huge success that it is and we thank them all.



*The team from Presenting Sponsor **Celgene***



*The team from Presenting Sponsor  
**Millennium: The Takeda Oncology Company***



*The team from **Amgen***



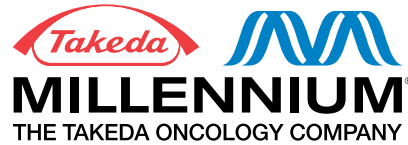
*The team from **Onyx Pharmaceuticals***



*The team from **Novartis***

## Event Sponsors

### PRESENTING SPONSORS



DIAMOND

Donna & Steve Feig  
Clayton Feig/Leta Garvett Research Grant



EMERALD



Susie Novis &  
Dr. Brian G.M. Durie

Judy & Richard  
Votmer



RUBY



WORLDWIDE PANTS  
INCORPORATED

Monica & Philip Rosenthal/Rosenthal Family Foundation



SAPPHIRE



Lorraine, Lucy  
& Amy Boyle



Genentech  
*A Member of the Roche Group*

Richard King

SPENCER HOWARD &  
*Signature Events*



TOPAZ

Cindy & Jim Gilbert

*Susan & Michael Katz*



Carol & Benson Klein  
ALICE & LOUIS WEISS



Improving Lives • Finding the Cure®

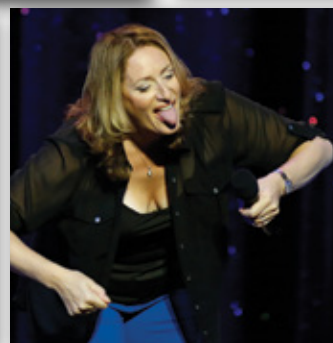
**International Myeloma Foundation**

12650 Riverside Drive, Suite 206  
North Hollywood, CA 91607-3421  
U.S.A.  
myeloma.org  
(800) 452-CURE (2873)  
Change Service Requested

NON-PROFIT  
ORGANIZATION  
U.S. POSTAGE  
**PAID**  
N. Hollywood, CA  
PERMIT NO. 665

*Dedicated to improving the quality of life of myeloma patients while working toward prevention and a cure.*

The IMF's 6th Annual Comedy Celebration featured some of comedy's biggest names before a sold-out crowd. The star-studded line up had the guests rolling in the aisles in hilarity.



Photography in this newsletter by Steve Cohn Photography, Mark Davis/Getty Images North America, James Lee Needham, Joe Scarnici/Getty Images North America