

*Improving Lives • Finding the Cure*

FOR



**INTERNATIONAL  
MYELOMA  
FOUNDATION**

**2011 ANNUAL REPORT**

*Improving Lives • Finding the Cure*

# INTERNATIONAL MYELOMA FOUNDATION



*Dedicated to improving  
the quality of life of myeloma patients  
while working toward prevention and a cure.*



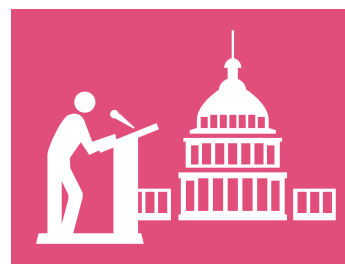
**RESEARCH**



**EDUCATION**



**SUPPORT**



**ADVOCACY**

# 2011 ANNUAL REPORT

## TABLE OF CONTENTS

<i>Letter from the Chairman</i>	2
<i>Update from the President</i>	3
<i>Research</i>	4
<i>Education</i>	10
<i>Support</i>	13
<i>Advocacy</i>	15
<i>Development</i>	17
<i>Financial Statements</i>	21
<i>Honor Roll</i>	24





**Brian G.M. Durie, MD, Chairman**  
Medical Director, AMyC Myeloma Consortium  
Specialist in Multiple Myeloma and Related Disorders  
Cedars-Sinai Outpatient Cancer Center  
at the Oschin Comprehensive Cancer Institute

Dear Supporters of the International Myeloma Foundation,

We have worked together for 20 years to help myeloma patients, their caregivers, and loved ones around the world. This year, our commitment to this mission proved as fruitful as ever. The work over the 2010-2011 fiscal year has strengthened patient care and treatment, bringing us closer to calling this disease “treatable.”

In March 2011, the IMF launched the Asian Myeloma Network to support physician and patient education throughout Asia. Multiple myeloma is increasing in Asia, with an incidence that is approaching that of western countries, yet with a much larger population base. Launching the network and the China Myeloma Working Group in August 2011 represents a great leap toward increasing a research base and strengthening access of myeloma patient and caregiver support.

In June 2011, the IMF held its annual International Myeloma Working Group Summit in London. This summit was yet another opportunity to bring together leading researchers in the field of myeloma, to establish recommendations for management of the disease, and guide the direction of future research. You will find in this report further detail on the incredible research-driven publications produced throughout 2011 by the IMWG; publications which work to inform patients and caregivers of therapeutic advances and treatment management.

This year, we launched the Search for a Cure program, with the intent to seek and fund promising myeloma research. We funded incredible research through our 2011 grants and we collaborated with key researchers to communicate important findings.

As one of the Foundation's four main pillars, the Education division created a new tool to inform patients and their families about diagnosis and treatment information entitled “10 Steps to Better Care™.” This is an interactive online, downloadable resource for patients and caregivers.

We are in the midst of an important era for the myeloma community; we are seeing more and more patient outcome improvements with novel drug agents, tailored therapies, and increased access to care and support. The IMF will continue to build upon its platform of research to inform more effective treatment regimens and will continue to support all who are affected by this disease.

I would like to thank all of our supporters and partners for enabling our mission to grow stronger and improving the care and treatment of myeloma.

Sincerely yours,

Brian G.M. Durie, MD  
Chairman, IMF Board of Directors

## IMF Board of Directors

### **Brian G.M. Durie, MD**

Chairman of the Board  
Los Angeles, CA

### **Mario Boccardo, MD**

Professor, Cattedra Di Ematologia  
Torino, Italy

### **Loraine Alterman Boyle**

Journalist  
New York, NY

### **Mark S. Di Cidila**

Account Manager, Epicor Software Corporation  
Orange, CA

### **Donna Feig**

Vice President, Foreign Parts Distributors  
Miami Beach, FL

### **Michael S. Katz, MBA**

Senior Vice President, Booz & Company  
Bayside, NY

### **Benson Klein, JD**

Principal Member, Ward & Klein  
Bethesda, MD

### **Andrew J. Kuzneski III**

Principal, Kuzneski Financial Group  
President, Greyhawk Capital  
Indiana, PA

### **Robert A. Kyle, MD**

Professor of Medicine and Laboratory Medicine,  
Mayo Clinic  
Rochester, MN

### **Heinz Ludwig, MD**

Director of Department of Medicine I,  
Wilhelminenspital der Stadt Wien  
Vienna, Austria

### **Edith P. Mitchell, MD**

Clinical Professor of Medicine,  
Thomas Jefferson University  
Brigadier General, National Guard  
Philadelphia, PA

### **Charles Newman, MS**

Founder, CEO & President, ReCellular, Inc.  
Principal, Newman Computer Group  
Ann Arbor, MI

### **Susie Novis**

President, International Myeloma Foundation  
Los Angeles, CA

### **John O'Dwyer**

Retired Businessman  
Plano, TX

### **S. Vincent Rajkumar, MD**

Professor of Medicine,  
Mayo Clinic  
Rochester, MN

### **Matthew Robinson, MBA**

Vice President, Sales and Business Development  
Warner Bros. International Television  
Los Angeles, CA

### **E. Michael D. Scott, CPA, JD**

Proprietor & Executive Vice President, Vox Media  
Newtown, PA

### **Igor Sill**

Co-Founder & Managing Director,  
Geneva Venture Partners  
Founder & Chairman,  
Geneva Group International  
San Francisco, CA

### **Allan Weinstein, PhD**

Director, St. Francis Medical Technologies, Inc.  
Phoenix, AZ

### **Amy Weiss**

Executive Vice President, Business Affairs  
Brillstein Entertainment Partners  
Beverly Hills, CA

**Susie Novis, President**  
International Myeloma Foundation



Dear Friends, Supporters, and Members,

The International Myeloma Foundation celebrated its 20th anniversary during the 2010-2011 fiscal year. It turned out to be our biggest year ever with more than \$9.2 million received in support of our outstanding programs and services! As I look through the pages of this Annual Report, I am both humbled by and grateful for the opportunity to improve the lives of myeloma patients and family members, and to partner with the medical community. The IMF experienced a year of truly remarkable accomplishments through its Advocacy, Support, Education and Research programs.

In the area of Advocacy, IMF members worked tirelessly to provide oral testimony in state governments, which led to the successful passing of drug parity laws in New York, Mexico, and Texas. Through our partnership with other cancer advocacy organizations, we supported the re-introduction of the Cancer Coverage Parity Act of 2011 on the federal level, which has the potential to impact tens of thousands of lives.

The IMF Support Groups program grew steadily over the year; 150 groups in the United States, Canada, and Europe are now active. The volunteers that serve as support group leaders are the heroes of the IMF, helping people in the community on a daily basis.

Furthering Education, the IMF sponsored four incredibly strong Patient & Family Seminars featuring important discussions around new drug effectiveness, and eleven Regional Community Workshops; four of which had over 100 people in attendance. Last February in Boca Raton, a spontaneous – and highly unusual – wave of generosity initiated by IMF member Bob Feltzin resulted in donations totaling \$40,000 to the IMF research fund. I am very proud to have been able to establish a grant in his honor and memory.

In the area of Research, we experienced tremendous successes. We established the Asian Myeloma Network to extend the breadth of international myeloma education and research. We also announced research projects funded through this year's Brian D. Novis Grants; projects that will bring us closer to more effective care and treatment of myeloma.

As you read through these pages, consider the many different ways the IMF, through generous donor support, touches the lives of myeloma patients and caregivers who come to rely on its programs. The IMF has been in the business of improving lives and finding a cure for 20 years. With your support, we will continue making outstanding progress.

Warmly,

A handwritten signature in blue ink that reads "Susie Novis". The signature is fluid and cursive.

Susie Novis  
President

**IMF Staff**

**Susie Novis**  
President

**Jennifer Scame**  
Chief Financial Officer

**Daniel Navid**  
Senior Global Analyst

**Diane Moran**  
Senior Vice President, Strategic Planning

**Heather Cooper Ortner**  
Vice President, Development

**Lisa Paik**  
Vice President, Clinical Education & Research Initiatives

---

**Betty Arevalo**  
Database & Inventory Control

**Arin Assero**  
Director of Advocacy

**Suzanne Battaglia**  
Director of Member Events

**Debbie Birns**  
Hotline Coordinator

**Joanie Borbely**  
Regional Director, Support Groups

**Gregor Brozeit**  
European Programs

**Meghan Buzby**  
Grassroots Liaison

**Kelly Cox**  
Regional Director, Support Groups  
Regional Community Workshops

**Janice Estrada**  
Auction and Development Associate

**Paul Hewitt**  
Hotline Coordinator

**Spencer Howard**  
Meeting & Event Services

**Marya Kazakova**  
Publications Editor

**Missy Klepetar**  
Hotline Coordinator

**Phil Lange**  
Accountant

**Andrew Lebkuecher**  
Regional Director, Support Groups

**Kemo Lee**  
Specialty Member Services Coordinator

**Randi Lovett**  
Director of Annual Giving & Social Media

**Danielle Loi**  
Assistant to Development & Medical Affairs

**Aimee Martin**  
Advocacy Grassroots Liaison

**Jim Needham**  
Publication Design

**Selma Plascencia**  
Data Specialist, Office Manager

**Chelsea Proctor**  
Executive Assistant

**Abbie Rich**  
Webmaster

**Thomas Shin**  
IT Systems Admin

**Robin Tuohy**  
Director of Support Groups

**Judy Webb**  
Hotline Coordinator



**Ola Landgren, MD, PhD**  
The National Cancer Institute  
Washington, DC

Dr. Landgren's work in cancer research began at the Karolinska Institute in Sweden in the mid-1990s. His early study began in the area of Hodgkin's Lymphoma and later his passion turned to the field of myeloma. Dr. Landgren's focus area in this field of research is around early myeloma biology and interventions, molecular imaging and profiling, drug development, correlative analyses, and populations-based studies.

In 2005, Dr. Landgren was introduced to the work of the IMF and joined the IMWG in 2010. His work on the advisory committee has been instrumental in the growth of the group's breadth of research. Currently, he is leading an important IMWG study on second tumors after myeloma diagnosis.

"Our work on the IMWG has allowed researchers who are working in this field to help patients increase collaboration with one another, to test hypotheses in other data sets, and to address and discuss important issues around our research."

Dr. Landgren hopes to continue to working with the IMWG to publish consensus statements and to inform myeloma patients, caregivers, and life-saving drug manufacturers. "I would hope that our group continues to identify and address important, outstanding questions and that we also continue to foster relationships to stimulate young researchers to build their careers in the field of myeloma."

The IMF thanks Dr. Ola Landgren for his invaluable contribution to the mission of the IMWG.

# RESEARCH

The International Myeloma Foundation is a leader of innovative, globally collaborative myeloma research that aims to improve the quality of life of those living with myeloma. The IMF is at the forefront of research and knowledge around "tailored treatment," where new and combined myeloma therapies aim to address the precise needs of each myeloma patient. Tailoring myeloma treatment will lead to an era where myeloma will be managed as a chronic disease rather than a terminal diagnosis.

## International Myeloma Working Group

The IMF's International Myeloma Working Group (IMWG) consists of 159 leading myeloma researchers from around the world. They collaborate on a broad range of myeloma research projects. With a goal to improve myeloma treatment options and diagnostic systems, their work focuses on protocols to provide a more



durable remission for myeloma patients while improving quality of life, addressing the needs of both myeloma patients and the physicians who treat them.

In June 2011, the second annual IMF IMWG Summit was held in London, England, with a mission to identify, support, and implement

the most promising research to prevent onset of active disease, improve treatment, and find a cure for myeloma. This summit brought together 71 myeloma experts from 25 countries, representing 55 institutions, and led to discussions about the key issues surrounding myeloma, including the diagnosis and management of high-risk smoldering myeloma, induction therapy, maintenance versus consolidation therapy, the role of early transplantation, the integration of new and existing drugs, and risk stratification. Recommendations for publications and research were produced, which will inform future research projects and clinical trials.

## IMWG PUBLICATIONS

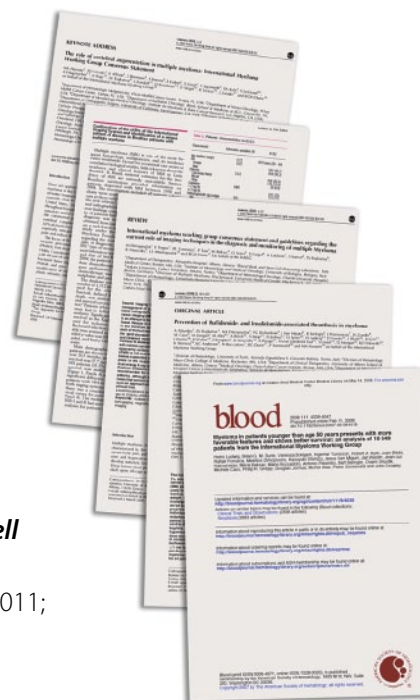
Long-term IMWG research collaboration led to four publications during the October 2010–September 2011 reporting period:

### ***Risk of progression and survival in multiple myeloma relapsing after therapy with IMiDs and bortezomib: A multicenter international myeloma working group study***

Kumar S, Lee J, Lahuerta J, et al. *Leukemia*, July 2011; doi: 10. 1038/leu.2011.196. Epub ahead of print.

### ***International Myeloma Working Group consensus approach to the treatment of multiple myeloma patients who are candidates for autologous stem cell transplantation***

Cavo M, Rajkumar SV, Palumbo A, et al. *Blood*, June 2011; 117(23): 6063-73. Epub March 29, 2011.





**International Myeloma Working Group consensus statement regarding the current status of allogeneic stem-cell transplantation (allo-SCT) for multiple myeloma**

Lokhorst H, Einsele H, Vesole D, et al. *Journal of Clinical Oncology*, October 2010; 10;28(29): 4521-30. Epub August 9, 2010.

**The use of biochemical markers of bone remodeling in multiple myeloma: a report of the International Myeloma Working Group**

Terpos E, Dimopoulos M, Sezer O, et al. *Leukemia*, 2010; 24: 1700–1712.

Full text versions of IMWG publications and presentations may be accessed here:  
<http://imwgpubs.myeloma.org>

## Asian Myeloma Network



On March 17, 2011, in Singapore the IMF launched the Asian Myeloma Network (AMN), which is composed of myeloma experts from China, Hong Kong, Taiwan, Japan, Rep. of Korea, Singapore, and Thailand. This network was initiated to spearhead physician education about myeloma and patient care and support throughout Asia. Multiple myeloma is a growing health problem in Asia, with an incidence that is approaching that of Western countries, however with a much larger population base.

One aim of this network is the development of a unified database to assess the incidence of myeloma in Asian countries to formulate the design of a region-specific treatment management plan. The IMF will provide help establishing this database with the creation of a template for data entry. Intended future projects will include the establishment of Asian clinical trials, as well as the development of informational resource materials in local languages, based on previous IMF-produced materials, intended for patients and caregiver use.



**Wee Joo Chng, MD, PhD**

National University Cancer Institute  
of Singapore,  
National University Health System, Singapore

Dr. Chng began his work in myeloma at the Mayo Clinic in Arizona in 2004. His present work in the field is around disease biology and risk assessment of patients in order to identify best possible therapeutic avenues, customized to individual patient needs.

"I was always interested in myeloma because of its complexity, its challenging nature, and because myeloma is at the forefront of the genomic revolution – an exciting area for drug development in hematologic malignancies."

Dr. Chng was first introduced to the IMF during his fellowship at the Mayo Clinic in 2005. The range of researchers working within the organization and its involvement of patients and families into the realm of cancer research are what drew him to the IMF. He later joined the IMWG, where he worked on the study of the survival among novel agent-treated myeloma patients who relapsed and the consensus statement on the role of risk stratification in myeloma treatment. He has also been working with Dr. Munshi of the Dana Farber Cancer Institute on a gene expressions analysis that promises to strengthen prognostics.

"Being part of the IMWG brought me closer to a community of thought leaders in the field. The frequent interaction and collaboration have greatly informed my practice in the management of myeloma patients in Singapore. My role in the IMWG has allowed me to participate in charting the future course of research and clinical management of myeloma."

Dr. Chng, with the help of the IMF, has started patient education initiatives in Singapore and recently organized the first patient forum in Singapore. It is his hope that the IMF's presence in Asia will grow and will strengthen our understanding of epidemiologic variations across ethnic groups in the myeloma community.

## Robert A. Kyle Lifetime Achievement Award

Named for its first recipient, the Robert A. Kyle Lifetime Achievement Award is presented annually by the IMF to an individual whose body of work in the field of myeloma has made significant advances in research, treatment, and care of myeloma patients.



NINTH ANNUAL INTERNATIONAL MYELOMA FOUNDATION  
**ROBERT A. KYLE**  
LIFETIME ACHIEVEMENT AWARD



**Douglas Joshua, AM** received this year's award. He is Head of Clinical and Laboratory Haematology at Sydney Cancer Centre, Head of Sydney South Western Area Health Service Haematology, the Alan Ng Professor in Medicine at University of Sydney, and the Director of the Institute of Hematology, Royal Prince Alfred Hospital. Professor Joshua is the ninth Kyle Award winner, and was honored in London on June 8, 2011.

## IMF Research-focused Presentations/Symposia at 2011 Myeloma Research-related Global Conferences

### The International Myeloma Workshop

The International Myeloma Workshop, which took place in May 2011 in Paris, France, focused on the biology, genetics, diagnosis, and treatment of multiple myeloma. The IMF held a seminar on key findings of this conference on May 6, facilitated by Brian Durie, Xavier LeLeu, Jean Fermand, and Thierry Facon.

Topics included:

- New data around long-term continuous lenalidomide maintenance therapy following stem cell transplants (seen to delay disease progression and improve overall survival)
- Pomalidomide and carfilzomib moving closer to FDA approval

### The American Society Of Hematology (ASH)

The American Society Of Hematology (ASH), which was held in December 2010 in Orlando, Florida, featured multiple myeloma as a key topic. On December 3, the IMF and the Postgraduate Institute for Medicine sponsored a symposium featuring the most recent reported observations from clinical trials of new drugs in development and combination therapies:

#### New drugs discussed at the IMF-sponsored symposium

- Carfilzomib, a proteasome inhibitor, shows promising activity among relapsed/refractory myeloma in phase I of a three-phased Multiple Myeloma Consortium study
- Pomalidomide, a promising immunomodulatory drug, is undergoing studies to determine best dosage practices
- Elotuzumab, a humanized monoclonal antibody, shows positive activity in a clinical trial; further research is required to look into effective dosage levels.
- MAbs in development: mapatumumab and lexatumumab

#### Combined regimens discussed

- Weekly bortezomib in combination with temsirolimus has shown positive activity
- A phase I trial is underway to assess dual targeting of –TORC1 and –TORC2
- An evaluation of lenalidomide and PD-0332991 showed an additive effect on reduction of IRF4, a myeloma survival cell factor.

The symposium concluded with a discussion on how these novel agents and new drug regimens are evolving. The trend of increased survival for patients with myeloma that began in the era of novel agents is continuing. Future regimens are likely to be based on combination therapies with unique mechanisms of action and non-overlapping toxicities. Risk stratification and tailoring of therapy to individual needs is advancing to include patient quality of life.



## Brian D. Novis Research Grants

Through its Brian D. Novis Research Grants program, the IMF remains at the forefront of identifying, supporting, and developing the world's most promising myeloma research. The IMF backs both junior and senior researchers, funding 111 grants since the program's inception in 1994. This IMF-supported work, which has led to more than 250 publications in the world's top research journals, continues to build knowledge around this disease and its treatment.



### Brian D. Novis Senior Research Grants 2011

*In memory of the IMF's co-founder, Brian Novis, the IMF has established annual grants to promote research into better treatments, management, prevention, and a cure. These grants are made possible through donations from private individuals and are awarded annually to doctors and researchers of promising work in the field of myeloma.*

#### **Laurence Catley, VIBBS, FRACP, FRCPA**

Mater Medical Research Institute  
Cancer and Immunology Program  
South Brisbane, Australia

***Metabolic targeting therapy for multiple myeloma***

#### **Hearn J. Cho, MD, PhD**

New York University School of Medicine  
New York University Cancer Institute  
New York, NY, USA

***Rationally designed pralatrexate combination therapies for multiple myeloma***

### Brian D. Novis Junior Research Grants 2011

#### **Shirong Li, PhD**

University of Pittsburgh  
Division of Hematology/Oncology  
Pittsburg, PA, USA

***Targeting the translational machinery in multiple myeloma***

#### **Naoya Mimura, MD, PhD**

Jerome Lipper Multiple Myeloma Center  
Dana-Farber Cancer Institute  
Harvard Medical School  
Boston, MA, USA

***Targeting the IREa-XBPI pathway in multiple myeloma***

#### **Vyacheslav Yurchenko, PhD**

Rockefeller University  
Laboratory of Lymphocyte Signaling  
New York, NY, USA

***MMSET and epigenetic control in t(4;14) myelomas***

## The 9<sup>th</sup> Annual Aki Horinouchi Research Grant

*Instituted by IMF-Japan in memory of its founder, this annual award has funded nine important research projects from 2002 to 2010 and two myeloma clinical group studies. The 2011 grant was awarded to two projects, for the first time since its inception:*

#### **Hiroshi Yasuim, MD, PhD**

Sapporo University School of Medicine  
Sapporo, Japan

***Epigenetics in multiple myeloma and prospects for translational research***

#### **Yusuke Furukawa, MD**

Jichi University School of Medicine  
Tochigi-ken, Japan

***The role of histone deacetylases (HDAC) in drug resistance of multiple myeloma cells***



**Hearn Jay Cho, MD, PhD**

New York University School of Medicine  
New York, NY

Dr. Cho was introduced to the field of myeloma research by a teacher and leading clinician in the field, Dr. Josi Michaeli. Through their collaborative work, Dr. Michaeli passed on to Dr. Cho his passion to eliminate this disease.

Dr. Cho has been a friend of the IMF for years and pursued the Brian D. Novis Senior Research Grant to investigate the effectiveness of pralatrexate for use in relapsed T-cell lymphoma. This class of anti-folate drug has not been commonly used in myeloma, but Dr. Cho's work has shown its effectiveness in lab trials. His work with this novel therapeutic agent and his work on vaccine immunotherapy is greatly contributing to superior treatment strategies and targeted therapeutic approaches.

*"The IMF is an organization of dedicated and passionate people, and their efforts are a critical complement to the clinical and translational research side of the myeloma field. We all have the same goal, and we all contribute to that goal. Independent funding agencies such as the IMF play a critical role in biomedical research and the IMF ensures that myeloma researchers will continue to receive funding to advance the search for a cure."*

## IMF Scientific Advisory Board

**Robert A. Kyle, MD, Chairman**  
Mayo Clinic  
Rochester, MN, USA

**Kenneth C. Anderson, MD**  
Dana-Farber Cancer Institute  
Boston, MA, USA

**Michel Attal, MD**  
Hôpital Purpan  
Toulouse, France

**Hervé Avet-Loiseau, MD, PhD**  
Institut de Biologie  
Nantes, France

**Dalsu Baris, MD, PhD**  
National Cancer Institute  
Rockville, MD, USA

**Bart Barlogie, MD, PhD**  
Myeloma Institute for Research and Therapy  
Little Rock, AR, USA

**Régis Bataille, MD**  
Central Laboratory of Hematology  
Nantes, France

**Meral Beksac, MD**  
Ankara University  
Ankara, Turkey

**William Bensinger, MD**  
Fred Hutchinson Cancer Research Center  
Seattle, WA, USA

**P. Leif Bergsagel, MD**  
Mayo Clinic  
Scottsdale, AZ, USA

**Joan Bladé, MD**  
Hospital Clinic  
Barcelona, Spain

**Mario Boccadoro, MD**  
University of Torino  
Torino, Italy

**Michele Cavo, MD**  
University of Bologna  
Bologna, Italy

**J. Anthony Child, MD**  
University of Leeds  
Chichester, UK

**Raymond L. Comenzo, MD**  
Tufts Medical Center  
Boston, MA, USA

**John Crowley, PhD**  
Cancer Research and Biostatistics  
Seattle, WA, USA

**Franco Dammacco, MD**  
Institute of Clinical Medicine  
Bari, Italy

**Faith Davies, MD**  
Royal Marsden Hospital London  
Sutton, UK

**Meletios Dimopoulos, MD**  
University of Athens  
Athens, Greece

**Johannes Drach, MD**  
University of Vienna  
Vienna, Austria

**Brian G.M. Durie, MD**  
Cedars-Sinai Samuel Oschin Cancer Center  
Los Angeles, CA, USA

**Hermann Einsele, MD**  
University of Würzburg  
Würzburg, Germany

**Thierry Facon, MD**  
Hopital C. Huriez  
Lille, France

**Dorotea Fantl, MD**  
Sociedad Argentina de Hematología  
Buenos Aires, Argentina

**Jean-Paul Fermand, MD**  
Hopital Saint-Louis  
Paris, France

**Rafael Fonseca, MD**  
Mayo Clinic  
Scottsdale, AZ, USA

**Gösta Gahrton, MD**  
Huddinge University Hospital  
Stockholm, Sweden

**Morie A. Gertz, MD**  
Mayo Clinic  
Rochester, MN, USA

**John Gibson, MD**  
Royal Prince Alfred Hospital  
Camperdown, Australia

**Hartmut Goldschmidt, MD**  
University of Heidelberg  
Heidelberg, Germany

**Roman Hájek, MD**  
University Hospital Brno  
Brno, Czech Republic

**Joy Ho, MD**  
Royal Prince Alfred Hospital  
Camperdown, Australia

**Vania Hungria, MD**  
Clinica São Germano  
São Paulo, Brazil

**Sundar Jagannath, MD**  
The Mount Sinai Medical Center  
New York, NY, USA

**Douglas Joshua, MD**  
Royal Prince Alfred Hospital  
Camperdown, Australia

**Michio M. Kawano, MD**  
Yamaguchi University  
Ube, Japan

**Ola Landgren, MD, PhD**  
National Cancer Institute,  
National Institutes of Health  
Bethesda, MD, USA

**Henk M. Lokhorst, MD**  
University Hospital Utrecht  
Utrecht, Netherlands

**Sagar Lonial, MD**  
Emory Winship Cancer Institute  
Atlanta, GA, USA

**Heinz Ludwig, MD**  
Wilhelminenspital  
Vienna, Austria

**Jayesh Mehta, MD**  
Northwestern University  
Chicago, IL, USA

**Håkan Mellstedt, MD, PhD**  
Karolinska Hospital  
Stockholm, Sweden

**Giampaolo Merlini, MD**  
University of Pavia  
Biotechnology Research Laboratories  
Pavia, Italy

**Angelina Rodriguez Morales, MD**  
Hemato-Oncology Clinica  
Caracas, Venezuela

**Gareth Morgan, MD, PhD**  
Royal Marsden Hospital  
Sutton, UK

**Nikhil Munshi, MD**  
Dana-Farber Cancer Institute  
Boston, MA, USA

**Amara Nouel, MD**  
Hospital Rutz y Paez  
Bolivar, Venezuela

**Antonio Palumbo, MD**  
University of Torino  
Torino, Italy

**Linda Pilarski, MD**  
University of Alberta  
Edmonton, AB, Canada

**Raymond Powles, MD**  
Parkside Oncology Clinic  
London, UK

**S. Vincent Rajkumar, MD**  
Mayo Clinic  
Rochester, MN, USA

**Donna E. Reece, MD**  
Princess Margaret Hospital  
Toronto, Canada

**Paul G. Richardson, MD**  
Dana-Farber Cancer Institute  
Boston, MA, USA

**David Roodman, MD**  
Indiana University School of Medicine  
Indianapolis, IN, USA

**Jesús F. San-Miguel, MD**  
University of Salamanca  
Salamanca, Spain

**Rik Schots, MD**  
Universitair Ziekenhuis Brussel  
Brussels, Belgium

**Orhan Sezer, MD**  
University of Hamburg  
Hamburg, Germany

**Kazuyuki Shimizu, MD**  
University of Keio  
for Advanced Biosciences  
Tsuruoka, Japan

**Chaim Shustik, MD**  
McGill University  
Montreal, QC, Canada

**David Siegel, MD**  
Hackensack University Medical Center  
Hackensack, NJ, USA

**Seema Singhal, MD**  
Northwestern University Medical Center  
Chicago, IL, USA

**Alan Solomon, MD**  
University of Tennessee Medical Center  
Knoxville, TN, USA

**Pieter Sonneveld, MD, PhD**  
Erasmus Medical Center  
Rotterdam, The Netherlands

**Andrew Spencer, MD**  
The Alfred Hospital  
Melbourne, Australia

**A. Keith Stewart, MD**  
Mayo Clinic  
Scottsdale, AZ, USA

**Guido Tricot, MD**  
University of Utah  
Huntsman Cancer Institute  
Salt Lake City, UT, USA

**Benjamin Van Camp, MD, PhD**  
Vrije Universiteit Brussel  
Brussels, Belgium

**Brian G. Van Ness, MD, PhD**  
University of Minnesota  
Minneapolis, MN, USA

**David H. Vesole, MD**  
John Theurer Cancer Center at  
Hackensack University Medical Center  
Hackensack, NJ, USA

**Jan Westin, MD**  
Sahlgrenska University Hospital  
Göteborg, Sweden

**Emeriti**  
**Raymond Alexanian, MD**  
USA

**Y.C. Chen, MD**  
Republic of China

**Ian Franklin, MD**  
Scotland, UK

**Tadamitsu Kishimoto, MD**  
Japan

**Ian MacLennan, MD**  
England, UK

**James S. Malpas, MD**  
England, UK

**Martin M. Oken, MD**  
USA

## Global Clinical Trials Forum

The IMF's Global Clinical Trials Forum was created to enhance the collaboration and cooperation between national and international myeloma research groups in order to improve clinical trial design and data accrual. In December 2010, the Global Clinical Trials Forum convened at the ASH conference in Orlando, Florida, where myeloma and new drug development around myeloma were featured topics.

The European Myeloma Network gave a presentation at this forum, which provided the audience an overview of their work and highlighted their interest in collaborating with clinical trial groups outside the European Union. For the first time, Asian myeloma experts attended this discussion with other world experts and were impressed with the structure and idea to establish a network of countries to focus on clinical trial endeavors. This exhibits growth of the IMF's reach around the globe.

### Global Clinical Trials Forum

**Kenneth C. Anderson, MD**  
Dana-Farber Cancer Institute  
Boston, MA, USA

**Michel Attal, MD**  
Service d'Hématologie, Hôpital Purpan  
Toulouse, France

**Hervé Avet-Loiseau, MD**  
Institutes of Biologie  
Nantes, France

**Bart Barlogie, MD**  
Myeloma Institute for Research Therapy  
Little Rock, AR, USA

**William Bensinger, MD**  
Fred Hutchinson Cancer Research Center  
Seattle, WA, USA

**Joan Bladé, MD**  
Hospital Clínic  
Barcelona, Spain

**Ivan Borrello, MD**  
Johns Hopkins University  
Baltimore, MD, USA

**Wee Joo Chng, MD**  
National University of Singapore  
Singapore

**John Crowley, PhD**  
Cancer Research and Biostatistics  
Seattle, WA, USA

**Angela Dispenzieri, MD**  
Mayo Clinic  
Rochester, MN, USA

**Brian G.M. Durie, MD**  
Cedars-Sinai Samuel Oschin Cancer Center  
Los Angeles, CA, USA

**Morie A. Gertz, MD**  
Mayo Clinic  
Rochester, MN, USA

**Sergio Giralt, MD**  
Memorial Sloan-Kettering Cancer Center  
New York, NY, USA

**Roman Hajek, MD**  
University Hospital Brno  
Brno, Czech Republic

**Sundar Jagannath, MD**  
The Mount Sinai Cancer Institute  
New York, NY, USA

**Shaji Kumar, MD**  
Mayo Clinic  
Rochester, MN, USA

**Robert A. Kyle, MD**  
Mayo Clinic  
Rochester, MN, USA

**Jae-Hoon Lee, MD**  
Gachon University Gil Hospital  
Incheon, Republic of Korea

**Richard F. Little, MD**  
National Cancer Institute  
Bethesda, MD USA

**Sagar Lonial, MD**  
Winship Cancer Institute  
Atlanta, GA, USA

**Heinz Ludwig, MD**  
Wilhelminenspital der Stadt Wien  
Vienna, Austria

**Gareth Morgan, MD, PhD**  
Royal Marsden Hospital  
Sutton, UK

**Nikhil Munshi, MD**  
Dana-Farber Cancer Institute  
Boston, MA, USA

**Antonio Palumbo, MD**  
University of Torino  
Torino, Italy

**S. Vincent Rajkumar, MD**  
Mayo Clinic  
Rochester, MN, USA

**Donna Reece, MD**  
Princess Margaret Hospital  
Toronto, ON, Canada

**Jésus San Miguel, MD**  
University of Salamanca  
Salamanca, Spain

**Seema Singhal, MD**  
Northwestern University Medical School  
Chicago, IL, USA

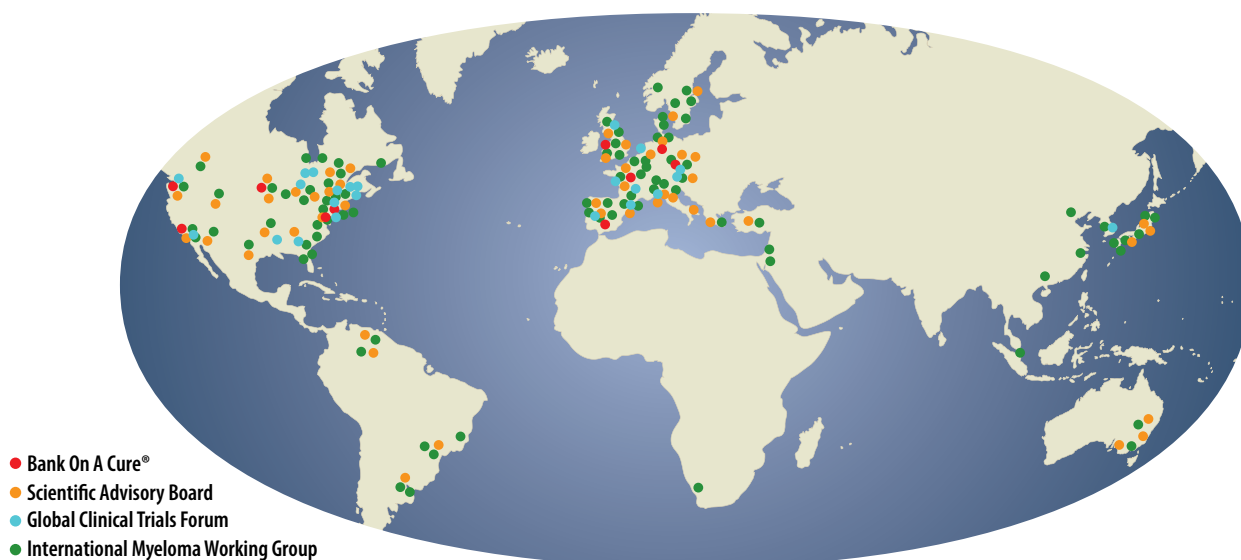
**Pieter Sonneveld, MD, PhD**  
Erasmus Medical Center  
Rotterdam, The Netherlands

**Edward Stadtmauer, MD**  
University of Pennsylvania  
Philadelphia, PA, USA

**Howard Streicher, MD**  
National Cancer Institute  
Rockville, MD, USA

**Robert Vesio, MD**  
Cedars-Sinai Samuel Oschin Cancer Center  
Los Angeles, CA, USA

## Our collaborative research extends worldwide.



*In this bird's-eye view, the colored dots represent the locations where IMF research programs take place all around the globe.*



**John Lively**  
Dallas, TX

In January 1996, John Lively was diagnosed with monoclonal gammopathy of undetermined significance (MGUS). He had little understanding of what this diagnosis meant for him and contacted the National Cancer Association, which sent him literature illustrating the high fatality rate associated with the disease. His healthcare providers put him in touch with the IMF. The IMF sent him resource materials and contact information for Peter Tischler, who ran a support group in his area. John has been a member and facilitator of this support group ever since.

There is no treatment for MGUS; rather it's a condition his healthcare providers will regularly monitor. He attended his first Patient & Family Seminar in Atlanta, Georgia in the spring of 1997. There he had the opportunity to speak with Drs. Durie and Kyle, Susie Novis, and several myeloma patients. He left that seminar knowing that there was no cure, but that he has a long life to live. He renewed his pilot license and flew all over the country. Today he goes dancing three to six nights a week. He has owned his own business since 1969, and has no plans to retire. He is 70 years old.

John takes comfort in staying knowledgeable about myeloma and the promising novel agents and therapy regimens in pursuit to treat it. "This disease has come from no hope, to a chronic disease that can be cared for with some bumps in the road."

He continues to attend Patient & Family Seminars when they are in the Dallas area and is grateful for the opportunity to further his knowledge of the disease as well as give and receive support to other patients living with myeloma. "By attending the Patient & Family seminars, I know I don't walk alone with this disease. The IMF has been a part of my family. If I have a question they are only a phone call away. I have supported them all these years and they have supported me. In our support group we are always hearing from patients who have contacted the IMF with their questions and get more back than they expected. The IMF, Dr. Durie, Susie are a part of our family. I tell people in my situation to not hesitate to make that phone call."

# EDUCATION

Although myeloma is one of the most prevalent forms of blood cancer, prior to diagnosis few patients have heard of the disease. To help address the many questions those newly affected by myeloma have, the IMF works to continuously share information on care, treatment, and support through the workshops and publications mentioned below. The IMF is also dedicated to supporting myeloma health care professionals with up-to-date information on treatment through its Nurse Leadership Board (see page 13).

IMF educational support gives patients an opportunity to join health care providers in decisions around treatment, creating the best possible quality of life for every myeloma patient.

## IMF Patient & Family Seminars



The IMF's Patient & Family Seminars present vital information about new treatments and clinical trials, provide time with myeloma specialists in intimate settings, and allow participants to share personal experiences and support. Premier myeloma experts

volunteer their time to the seminars, to empower patients and their families to make educated treatment choices tailored to their needs.

Since 1993, the IMF has hosted over 200 Patient & Family Seminars in 16 countries. From October 2010 to September 2011, approximately 1,000 participants attended US-based seminars in San Francisco, CA; Dallas, TX; Boca Raton, FL; and Philadelphia, PA.



Internationally, approximately 1,300 people attended IMF Patient & Family Seminars in Barcelona, Spain; Göteborg, Sweden; Hamburg, Heidelberg, and Würzburg, Germany; Lednice, Czech Republic; Lucca, Italy; Oslo, Norway; Rome, Italy; and Vienna, Austria.

## Regional Community Workshops



In addition to Patient & Family Seminars, the IMF facilitates Regional Community Workshops, which serve as condensed seminars in smaller cities to expand the reach of IMF programs and up-to-date information on myeloma care, support, and treatment to a wider audience. From October 2010 to September 2011, 12 US-based workshops were held in Shreveport, LA; Denver, CO; Las Vegas, NV; Raleigh, NC; Kansas City, KS; San Diego, CA; Atlanta, GA; Jacksonville, FL; Detroit, MI; Hartford, TX; Minneapolis, MO; and Norfolk, VA and were attended by approximately 960 participants.

The IMF also facilitated international Community Workshops, which attracted more than 400 participants in Berlin, Koblenz, and Leipzig, Germany; and Prague, Czech Republic.





## International Education

Community Workshops and Roundtables for more than 130 clinicians and researchers were held in Bergen, Norway; Berlin and Heidelberg, Germany; Göteborg, Lund, and Stockholm, Sweden; and Trondheim, Norway.

IMF Board Member and Scientific Advisory Board Chair Dr. Robert Kyle participated in meetings in Berlin, Göteborg, Heidelberg, Koblenz, Lund, Sweden, and Oslo. IMF Founder and Chairman Dr. Brian Durie spoke in Rome, Stockholm, and Vienna. IMF Scientific Advisory Board member Dr. Bart Barlogie was featured in Berlin, Heidelberg, Stuttgart, and Würzburg. All three are members of the International Myeloma Working Group (IMWG).

## Publications

The IMF is committed to the production of written materials that provide the myeloma community with an extensive knowledge base. The IMF's catalogue of materials includes a wide-ranging collection of communications materials, such as informational brochures and tip cards for patient and provider use, and journal articles which contribute to the body of knowledge of the latest research in the field of myeloma. This library is also home to the IMF's quarterly produced newsletter, *Myeloma Today*, and its email-based newsletter the *Myeloma Minute*, both of which provide up-to-date information on all issues affecting the myeloma community, including innovations in treatment, information on clinical trials, updates on policy issues, and guidance on where support can be accessed. All of these materials are produced by the IMF with oversight by its Scientific Advisory Board. The IMF library's broad scope includes information about myeloma treatment options, clinical trials, and quality of life considerations for patients and physicians. IMF publications are provided free of charge, in 16 languages.

From October 2010 through September 2011, the IMF created seventeen new publications. Seventeen additional publications were updated with the latest information. Many of these are bundled into the IMF InfoPack, designed to provide newly diagnosed patients and their families with complete understanding of the disease and patient care. From October 2010 to September 2011, the IMF disseminated approximately 2,200 InfoPacks to patients, health care providers, and support groups around the world.

The IMF's *Myeloma Today* is one of the few resources in the world which provides regularly updated information on advances in treatment, research, and quality of life. This newsletter has a readership estimated at 75,000 per issue.

The *Myeloma Minute* provides up-to-the-minute information about research, events, and IMF programs. In September 2011, its subscriber-base was nearly 30,000 readers.



### IMF 2011 List of Publications

*CITINGS: ASCO 2011 – Novel Therapies – Special Edition\**  
*CITINGS: ASCO 2011 – Freelite®/Hevylite™ – Special Edition\**  
*CITINGS: ASH 2011 – Novel Therapies – Special Edition\**  
*CITINGS: ASH 2011 – Freelite®/Hevylite™ – Special Edition\**  
*CITINGS: Freelite®/Hevylite™\*\**  
*CITINGS: Novel Therapies\*\**  
*CITINGS: Novel Therapies – March 2011\**  
*CITINGS: Novel Therapies – May 2011\**  
Clinical Trial Data Sheets: ASPIRE and FOCUS trials\*  
Concise Review of the Disease and Treatment Options\*\*  
Early Screening for MGUS flowchart\*  
Freelite® tip card\*  
ASCO 2011 Highlights for Patients\*  
ASCO 2011 Highlights for Physicians\*  
ASH 2010 Highlights for Patients\*  
ASH 2010 Highlights for Physicians\*  
I Have Myeloma... What's Next? (DVD)  
IMF Patient & Family Seminar: Boca Raton 2011 (DVD)\*  
International Myeloma Workshop: Paris 2011 (set of 4 DVDs)\*  
International Myeloma Workshop: Paris 2011 – Comprehensive Guide\*  
IMF Patient Handbook\*\*  
International Myeloma Working Group (IMWG) publications (a total of 39 as of 9/30/11)  
International Staging System tip card  
MM Support Group tip card\*\*  
Monitoring Patients with M-Proteins flowchart  
Mozobil® tip card  
Multiple Myeloma tip card  
Myeloma Manager™ tip card  
Myeloma Matrix: Clinical Trials\*\*  
Myeloma Minute e-newsletter\*\*  
Myeloma Today quarterly newsletter\*\*  
Nurse Leadership Board Survivorship Care Guidelines\*  
ONS Symposium 2011 (DVD)\*\*  
Understanding Anemia and Fatigue\*\*  
Understanding Balloon Kyphoplasty and Myeloma-Induced Vertebral Compression Fractures  
Understanding Bisphosphonate Therapy\*\*  
Understanding Dexamethasone and other Steroids\*\*  
Understanding Protein Electrophoresis\*  
Understanding Revlimid®\*\*  
Understanding Serum Free Light Chain Assays\*\*  
Understanding Stem Cell Transplant\*\*  
Understanding Thalidomide Therapy\*\*  
Understanding VELCADE (bortezomib) for Injection Therapy\*\*  
Understanding Your Test Results\*

\*New for 2011

\*\*Updated for 2011





**Tiffany Richards, MS, ANP, AOCNP**  
Houston, TX

Since 2004, Tiffany Richards has focused her career in nursing on the care and support of patients with myeloma. In an effort to increase education of myeloma and its treatment among patients and caregivers, Tiffany reached out to support groups and began presenting at an IMF-led support group in her community. Through her relationship with this group and with the IMF, Tiffany was introduced to the work of the Nurse Leadership Board (NLB) and has become an invaluable member.

At the sixth annual NLB meeting in November 2010, Tiffany gave a lecture entitled *Impact of Myeloma Disease, Treatments, Long-Term Effects, and Patient-Specific Characteristics on Renal Complications, Sexuality, and Sexual Dysfunction*. In her words, "Sexual dysfunction is one of the most common and enduring consequences of cancer treatment and one that is not often addressed." She pleaded for increased communication among patients, nurses, and physicians in this area to increase patient quality of life.

Currently, Tiffany sits on the NLB publications committee and is chairing the survivorship tool committee. She feels that the work she accomplishes through the NLB is immensely valuable.

*"The NLB works to educate nurses on how to manage patients with myeloma, which is incredibly important. Most nurses are not familiar with the disease, but I see this beginning to change."*



## Nurse Leadership Board

The IMF Nurse Leadership Board (NLB) is comprised of 20 nurses from major centers treating myeloma patients throughout the US. The NLB provides a forum for addressing the needs of the myeloma nurse and patient communities. NLB members work each year to provide relevant information to patients and providers by presenting at key conferences, participating in IMF Patient and Family Seminars and Regional Workshops, conducting nurse education webinars and other educational teleconferences and through publication of educational materials and guidelines on myeloma management.

In November 2010, the NLB convened its sixth annual meeting in New Jersey, where NLB members discussed their projects including publication and dissemination of the Survivorship Care Plans for Myeloma Patients, development of a web-based survivorship tool, design and implementation of nurse-led research, and developing guidelines for care of the myeloma patient undergoing transplant.

In April 2011, the NLB hosted a symposium at the 36th Annual Congress of the Oncology Nursing Society to present the NLB Long Term Care Survivorship Guidelines for Multiple Myeloma Patients. The symposium focused on promising agents in clinical development, optimal patient treatments, follow-up of treatment outcomes, and how to maintain quality of life through this continuum of cancer and treatment. This conference was attended by 750 nurses.

### IMF Nurse Leadership Board Members

**Page Bertolotti, RN, BSN, OCN**  
Cedars-Sinai Outpatient Cancer Center  
Samuel Oschin Comprehensive Cancer Institute  
Los Angeles, CA

**Elizabeth Bilotti, RN, MSN, APRN, BC, OCN**  
The John Theurer Cancer Center at HUMC  
Multiple Myeloma Division  
Hackensack, NJ

**Kathleen Colson, RN, BSN, BS**  
Dana-Farber Cancer Institute  
Boston, MA

**Deborah Doss, RN, OCN**  
Dana-Farber Cancer Institute  
Boston, MA

**Beth Faiman, MSN, APRN-BC, AOCN**  
Cleveland Clinic Taussig Cancer Institute  
Multiple Myeloma Program  
Cleveland, OH

**Charise Gleason, MSN, NP-BC, AOCNP**  
Emory University Winship Cancer Institute  
Atlanta, GA

**Bonnie Jenkins, RN**  
University of Arkansas Medical School  
Little Rock, AR

**Kathy Lilleby, RN**  
Fred Hutchinson Cancer Research Center  
Seattle, WA

**Patricia A. Mangan, APRN, BC**  
Abramson Cancer Center  
University of Pennsylvania  
Philadelphia, PA

**Ann McNeill, RN, MSN, APN**  
The John Theurer Cancer Center at HUMC  
Multiple Myeloma Division  
Hackensack, NJ

**Teresa Miceli, RN, BSN, OCN**  
Mayo Clinic Rochester  
Rochester, MN

**Kena C. Miller, RN, MSN, FNP**  
Roswell Park Cancer Institute  
Buffalo, NY

**Tiffany Richards, MS, ANP, AOCNP**  
MD Anderson Cancer Center  
Houston, TX

**Sandra Rome, RN, MN, AOCN**  
Cedars-Sinai Medical Center  
Los Angeles, CA

**Jacy Spong, RN, BSN, OCN**  
Mayo Clinic Arizona  
Scottsdale, AZ

**Joseph D. Tariman, PhD, APRN, BC**  
Northwestern University Myeloma Program  
Chicago, IL

#### NLB Associate Members

**B. Nadine Baxter-Hale, MNsc, APN-BC, AOCNP**  
University of Arkansas for Medical Sciences  
Myeloma Institute of Research and Therapy  
Little Rock, AR

**Elizabeth Finley-Oliver, RN**  
H. Lee Moffitt Cancer Center and  
Research Institute  
Tampa, FL

**Sandra Kurtin, RN, MS, AOCN, ANP-C**  
Arizona Cancer Center  
Tucson, AZ

**Kimberly Noonan, RN, ANP, AOCN**  
Dana-Farber Cancer Institute  
Boston, MA

# SUPPORT

“Myeloma may suck, but the IMF rocks.”

– BARBARA HAMMACK, Kensington, MD

The IMF remains dedicated to ensuring the Support of those living with myeloma. The IMF's programs and services are designed to provide patients and their loved ones with local and global support networks and easily accessible, up-to-date information. The IMF provides educational and psychosocial support of the myeloma community through its website, listserv, social media efforts, and its toll-free Hotline, as well as its wide-ranging network of community support groups.

## myeloma.org

Through its website, the IMF offers patients, caregivers, and health care professionals multi-lingual access to the IMF and externally published literature, research updates, the latest community developments, and linkage to support services and advocacy forums. From October 2010 through September 2011, over 340,000 visitors went to myeloma.org, tallying nearly 1,400,000 page views. Of these visitors, 60% were new to the IMF website. The almost 1,000 IMF-produced videos housed on the web brought nearly 58,000 views. Website visitors viewed and downloaded over 23,000 PDFs of documents created or updated during the year. During this time period, the IMF's website was also visited over 18,000 times from mobile devices.

Summer of 2011 saw the addition to the website of 10 Steps to Better Care™, an interactive online, downloadable resource. Patients and caregivers can drill down into each step to read articles, watch videos, and gain a better understanding about everything from initial diagnosis, to relapse, tests, and clinical trials.



## Toll-Free Hotline

The IMF's toll-free Hotline provides life-saving and life-changing myeloma treatment and management support from highly trained specialists. From October 2010 through September 2011, Hotline responders supported 2,179 callers and answered nearly 1,500 emails.



**Barbara Hammack**  
Kensington, MD

In 1991, Barbara Hammack was told she “probably” had smoldering myeloma. At the time, Barbara (or Boogie, as she's often called) was 45, busy, career-focused, and not particularly well-informed by her then-provider. She went through the motions of this seemingly strange diagnosis and treatment. It was not until after multiple rounds of treatment (with the ensuing hair loss), and preparation for stem cell transplantation that Boogie realized she had cancer and that this cancer would greatly impact her life. She had her transplant in 1994. Her transplant and her treatment, although extremely difficult to live through, have been met with success.

Barb retired in 1999 and was looking for something meaningful to make of her time. She found a myeloma support group in her community and started to build relationships with other patients, caregivers, and the IMF. Soon after joining the group, she attended her first Patient & Family Seminar where she connected with an IMF Hotline coordinator. Over the years, Barb has stayed in close communication with the Hotline; it has proved an immense resource for Barb in understanding her disease.

*“During my transplant in 1994, I didn't know about the IMF; I don't even think we had reliable internet then. I was living in a bit of a vacuum. I now have the opportunity to prevent that knowledge gap. I have referred countless patients to the IMF Hotline, knowing that they will be given the best information from the most caring people.”*

Today, Boogie is doing well. Her oncologist started her on an oral chemotherapy with promising outcomes in the first few months. She continues her volunteer work and her outreach and support of myeloma awareness, and her steadfast relationship with the IMF, because in her words “Myeloma may suck, but the IMF rocks.”





**Anne Pacowta**  
Ponte Vedra, FL

In 2003, Jack Pacowta was diagnosed with myeloma. Soon after his diagnosis, Jack and his wife, Anne, learned of the IMF and a local IMF support group in their community of Waterbury, CT. They began to attend support group meetings and took some comfort in educating themselves about this disease and treatment innovations, as well as the personal support received there.

Jack retired in 2006 and he and Anne decided it was best to move down to Ponte Vedra, where they vacationed for years. In their new community, there were no myeloma-specific support groups and Anne and Jack realized the importance of the help provided through those meetings.

They reached out to the IMF and consulted with staff on how, where, and when to build their own support group. In December 2007, they held their first meeting, with twelve people in attendance.

Jack passed away in 2008. Before he died, he expressed his wish for the group to continue. Anne and her co-leaders, Hunter and Diana Chiles, have served Jack's legacy well; there are now 49 members of the North Florida Multiple Myeloma Support Group.

*"Jack's diagnosis was both a devastation and blessing to our family. No other event in our lives made our priorities so very crystal clear and brought an already close family even closer. It's been three years that I've been carrying on his wish, and at times it becomes painful, but the ability to help someone take charge of their situation and be empowered by education is very gratifying. I made a commitment to continue as long as I can."*

## Support Groups

Through a global community of assisted support groups, the IMF seeks to ensure that patients and families have local access to psychosocial support and education. The IMF currently supports more

than 150 support groups worldwide. From October 2010 through September 2011, a total of nine new support groups were formed in: Dover, DE; Chico, CA; Grand



Rapids, MI; Nature Coast, FL; Texarkana, AR; Kingwood, TX; Indianapolis, IN; Charlotte, NC; and Nashville, TN

The IMF is dedicated to overseeing the needs of these groups and their leaders. From October 2010 through September 2011, IMF staff visited 95 percent of its US-based groups at least once.

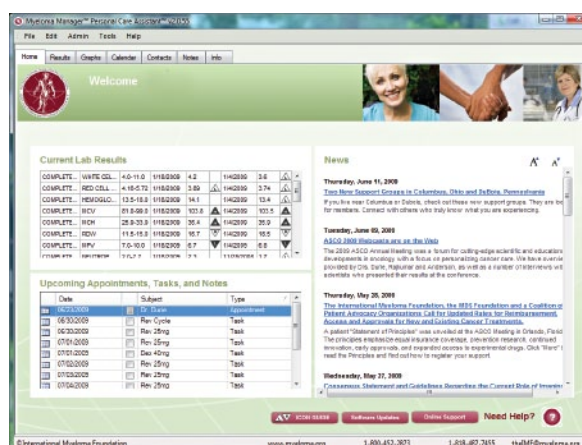
In addition, the IMF's 12th annual Support Group Leaders' Summit took place in July 2011 in Dallas, TX. A total of 76 Support Group Leaders representing 50 groups attended the summit, including 33 leaders who attended for the first time. Participants



were updated on the latest information about myeloma treatment and care, and provided with new leadership tools and approaches – all to further enhance the experience for their support groups back home.

## Myeloma Manager™

The IMF's Myeloma Manager™ Personal Care Assistant™ is a computer program that tracks a patient's individual laboratory results and also displays and prints charts to show how these results change over time. This is an unprecedented way for



patients to fully understand their own personal trends and assess progress over an extended period, helping them and their caregivers maximize the growing wealth of information and constantly increasing complexity of myeloma treatment programs.

The Myeloma Manager is available for download, free of charge, through the

IMF website. From October 2010 through September 2011, this groundbreaking program was downloaded for new use 1,443 times, with an additional 50 downloads of the amyloidosis-specific version of the program.

# ADVOCACY

The IMF is dedicated to creating an inclusive community that supports the wide-ranging needs of all affected by myeloma. By advocating at state and federal levels, the IMF serves as a voice to heighten quality access to care and end disparities in insurance coverage that affect patient care, protect and increase myeloma research budgets, strengthen clinical trials, and advocate for prompt Food and Drug Administration approval of effective treatments. The IMF includes the entire myeloma community in these efforts and continues to expand its commitment to empowering patients, families, and friends to advocate on behalf of patient rights.

## Public Policy

At the governmental level, the IMF remains committed to creating effective and prompt solutions, while simultaneously strengthening care strategies, cancer prevention, and treatment innovations. The IMF advocacy efforts have included calling on the US Congress to strengthen preventive care, improve patient access to treatment, and maintain the key provisions of health reform essential for high quality of care for cancer patients.

Despite the difficult economic times our country faced in 2011, the IMF successfully advocated for the funding of important cancer research through government agencies. These efforts resulted in funding for programs at the National Institutes of Health (NIH), the National Cancer Institute (NCI), and the US Centers for Disease Control and Prevention (CDC) in fiscal year 2011.

## Advocacy Efforts at the Federal Level

This year, the IMF advocacy team focused on collaborating with a variety of cancer-focused patient organizations with a common goal: to increase access to treatment. In July 2011, the IMF formed the Patients Equal Access Coalition (PEAC), as a vehicle to achieve this goal. PEAC is comprised of advocacy groups from across the cancer spectrum, including breast, colorectal, ovarian, pancreatic, brain, myeloma, and other blood cancers.

PEAC supported Representative Brian Higgins (D-NJ) in championing cancer issues in Congress and reintroducing the *Cancer Coverage Parity Act of 2011*. This important legislation is instrumental in making progress to eliminate the disparity in insurance coverage and reimbursement between oral and intravenous chemotherapy treatment, and to decrease the unmanageable out-of-pocket expenses for patients who have been prescribed an oral medication by their doctors.



**Sue Enright**  
Jackson, WI

*"Nobody should have to max out their credit cards, or lose their home just to afford cancer treatment. Sadly, that is a reality for many cancer patients. They have enough on their plate just trying to regain their health without the added burden of figuring out how to pay for life-saving treatment and going deeply into debt in the process."*

– Sue Enright in support of the oral drug parity bill in Wisconsin

Sue Enright, a caregiver and IMF advocate, has been lending her voice to support patient rights in Wisconsin. She co-founded the West Bend Myeloma Support Group in 2008 and later became a charter member of the Wisconsin Coalition for Cancer Treatment Access (WCCTA).

In January 2011, Sue and her husband Rob, a myeloma patient, along with three other members of their support group met with Wisconsin Representative Pat Strachota. They emphasized the importance of equal access to anticancer treatments for all patients. The group presented an overview of multiple myeloma, its treatments, and side effects.

Shortly after their meeting, Representative Strachota helped to introduce an oral chemotherapy access bill to ensure that insurance plans reimburse oral anticancer medications on the same basis as IV or injected anticancer medications.

In April 2011, Sue was part of a small but powerful group of IMF advocates for a *Day at the Capitol*, a lobby event hosted by the IMF, WCCTA, and the Leukemia and Lymphoma Society. The group of six met with three State Representatives and one State Senator to encourage the passage of the oral chemotherapy access bill in Wisconsin.

Sue hosted her second support group meeting with a member of the Wisconsin legislature, Senator Glenn Grothmann in August 2011. In all of these meetings, the group illustrated the importance of patient-physician collaboration in designing an effective treatment regimen and how inequity in coverage should not play a factor in those careful and life-saving discussions.

Sue calls her work a privilege. She looks forward to a brighter future for all cancer patients. Sue was recently voted *IMF Advocate of the Month* twice.



## Advocacy Partnerships

In May 2011, the IMF once again participated in the One Voice Against Cancer (OVAC) Lobby Day in Washington, DC, organized to urge the federal government to increase funding for medical research at the NIH, NCI, CDC, and the FDA. In addition to its collaboration with OVAC, from October 2010 through September 2011, the IMF continued our partnerships with the Cancer Leadership Council, the Hematological Cancers Coalition, the Lethal Cancer Coalition and the National Coalition for Cancer Research, Alliance for a Stronger FDA and the National Organization for Rare Disorders, and formed a new partnership with the Wisconsin Coalition for Cancer Treatment Access.



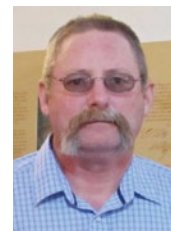
### IMF Advocacy Partners

- Alliance for a Stronger FDA
- Cancer Leadership Council
- Hematological Cancers Coalition
- Lethal Cancer Coalition
- National Coalition for Cancer Research
- National Organization for Rare Disorders
- One Voice Against Cancer
- Patient Equal Access Coalition
- Wisconsin Coalition for Cancer Treatment Access.

## Advocacy Efforts at the State Level

Cancer treatment coverage legislation has been introduced in multiple states across the country and many IMF advocates turned out to support state bills and share their stories of how disparity in treatment access has affected their lives.

In March, myeloma survivor and IMF advocate David Cowan from New Mexico shared his story before the House, Health, and Government Affairs Committee in support of SB 385, which requires equal coverage for orally administered and intravenous chemotherapy in New Mexico. The bill passed unanimously and was signed into law in April 2011.



David Cowan shared his story in New Mexico



Paula Van Riper

In June, Paula Van Riper, an IMF Support Group Leader from New Jersey, provided oral testimony on behalf of her group to support an oral chemotherapy access bill to the New Jersey Assembly Health Committee. In early summer, Kena Miller, RN, MSN, FNP, an IMF Nurse Leadership Board member, met with ten New York legislators in Albany to emphasize the importance of the oral chemotherapy access legislation. The bill was signed into law in New York in September 2011. Support of similar legislation also took place in Wisconsin.



Kena Miller

In Texas and Illinois the IMF issued action alerts to in-state network members, where chemotherapy access legislation was passed in May and July 2011 respectively. The IMF also worked with advocates to schedule meetings and encourage letters to state legislators in Pennsylvania, Oklahoma, and California to ensure the passage of this bill.

## IMF Advocacy Action Center

The IMF's Advocacy Action Center is an online, centralized hub that shares governmental activity affecting the myeloma community and provides the tools for myeloma patients, families, caregivers, and medical professionals to become part of the process.

From October 2010 through September 2011, nearly 1,000 new subscribers joined the IMF Myeloma Action Network, an email service that alerts members when a new government representative or legislative issue needs to be addressed by the myeloma community. Members of the Myeloma Action Network sent more than 3,000 emails to their state and federal legislators during this reporting period.

On August 11, 2011, the Action Center hosted a training webinar for all advocates that focused on the best ways to connect with Congress. This skills-building session was attended by more than 50 advocates and resulted in more than 10 face-to-face meetings with US Representatives across the country.

## IMF Myeloma Awareness Month

The IMF advocates for research and treatment issues affecting the myeloma community by observing Myeloma Awareness Month. The March 2011 event included a four-part teleconference series, free of charge for all listeners. Topics addressed included an update on management of side effects treatments and novel agents, participations in clinical trials, issues of consideration in Medicare, and the psychosocial implications of myeloma.



# DEVELOPMENT

*“You can either be frustrated your whole life,  
or try to create some semblance of understanding  
and do something about it.”*

– STEVE FEIG, Miami, FL

The IMF's mission to improve lives and find a cure began 21 years ago with the belief that no one should ever have to face myeloma alone. The IMF's core programs in each of the four areas of research, education, support, and advocacy provide patients and their families with the most important tools to fight the disease.

These programs receive support through the IMF's relationships with individual donors, corporate sponsors, and grants from pharmaceutical partners. The results of the IMF's fundraising activities provide access to low- and no-cost programs and services to the myeloma community.

The IMF appreciates the support from all donors regardless of how large or small their gift may be. Each dollar received makes it possible to continue offering and improving upon existing programs, while exploring new ways to service the myeloma community with top-rate information and support.

During the 2010-11 Fiscal Year, the IMF exceeded its fundraising goals through the generous support of our donors. During the twelve-month period from October 1, 2010 to September 30, 2011, the IMF raised a total of \$9.2 million in support of vital programs and services.

## Major Gifts & Planned Giving

The IMF received major gifts from 43 donors, totaling \$742,000 during the 2010-11 Fiscal Year. Major donors are a small but dedicated group of supporters who make a powerful impact on the IMF's fiscal stability through their generous and substantial gifts.

### Brian D. Novis Legacy Society

The IMF recognizes individuals who have made arrangements to include the organization in their long-term estate plans through the Brian D. Novis Legacy Society. Members in the society make bequest provisions in their will or revocable trust, or name the IMF as a beneficiary of qualified retirement plan assets (IRA or 401(k)) or life insurance policy.

The IMF sincerely wishes long, happy, and healthy lives for all myeloma patients and their families, but also recognizes that this development strategy will yield long-term results to help ensure the future of the IMF's life-saving programs and services. To become a member of the Legacy Society, the IMF requests that individuals simply confirm their planned gift in writing. No minimum commitment is necessary.



**Donna and Steve Feig**  
Miami, FL

In 1991, Donna Feig's mother, Leta Garvett, was diagnosed with myeloma. Leta, a health-minded and resourceful person, took careful steps in her treatment. She joined an IMF Support Group soon after her diagnosis and initiated one of her own for her community of South Florida. Upon her passing, her husband, Robert, took it over. Robert Garvett not only ran the support group, but also leveraged funds for a research grant and helped coordinate a Patient & Family Seminar.

Donna and Steve Feig have a long and trusted relationship with the IMF and began giving to the IMF after Leta passed away. Their contributions and efforts on behalf of the IMF over the years, in particular their participation in the Annual Comedy Celebration, has had a major impact on the Foundation.

The Feigs hope their contributions will help patients and families the world over to benefit from the IMF-provided education and support from which their family benefitted. Donna is now a member of the IMF Board of Directors where she works to increase doctor- and patient-level education of this disease.

*“In some way, both Donna and I have been very fortunate. In others, we've been very unfortunate. My child Clayton died at age 18, which is why we have created a Clayton Feig Research Grant. You can either be frustrated your whole life, or try to create some semblance of understanding and do something about it. We did the latter. The IMF stands for what we try to do.”*

– Steve Feig





**Randy and Steve Tammara**  
Philadelphia, PA

Randy Tammara’s father, Steve, was diagnosed with myeloma at the age of 65. He’s been battling this cancer, osteopenia, and anemia. He uses oral chemotherapy and supplements and he visits two oncologists on an alternating basis. Despite all of the challenges related to Steve’s diagnosis, he shows up for work every day to help Randy run their co-owned pharmacy in Philadelphia, PA.

When it comes to receiving support for multiple myeloma, both Randy and Steve turn to the IMF. They value the up-to-date information provided through the IMF’s educational and support resources. They also attend local support group meetings, through which their family has connected with care providers and other patients.

That is why both Randy and Steve support the IMF’s mission through monthly giving. Their monthly donations were part of the inspiration behind creating the IMF’s recurring giving program, The Hope Society. Their collective monthly support over the last five years has been considerable.

The IMF is grateful for this father and son team’s generous dedication to its mission and hopes to continue to support Steve and the Tammara family in the management and care of myeloma.

## The Hope Society

The IMF’s sustained giving program allows members to make recurring contributions on a monthly or quarterly basis. Participants in this program make small, regular donations that add up to make a significant impact on the organization’s mission. Hope Society members gave a total of \$25,255 during the 2010-11 Fiscal Year, a 69% increase over last year.

## The Hope Society



*Cultivating the future  
by planting the seeds  
to sustain the IMF*

### The Hope Society Honor Roll

Kathy and Charles Albino	Gerda Ann Gassman	Agatha M. Polowy
Mary Ann and Jeffrey Allyn	Irene and Laurence Gauthier	Ellen Whitworth Powell
Cathie Alonzo	Roseann and Philip Geiger	Dan Quattrochi
Bonnie Anderson	Patricia Giaimo	Wilma and James Rector
Deborah and John Anderson	Carl Gilliam	Lauren Regan
Pam and Scott Andrews	Carla Goode	Tina and Michael Rettig
Mary Authors	Vivian Gould	Linda and Jerry Reynolds
Elizabeth Beckley	Roberta and Arnold Greenberg	Mary Alex Rohleder
David Bennett	Janet and Randy Hagihara	Heidi Rubinstein and Brian Kuchynskas
Marcy Bernstein	Carol Hornreich	Robert Santos
John Boehle, Jr.	Nicci Hubert	Cynthia Schulze
Frances and James D. Bowles	Carroll Anne and William Hynes	Marguerite and Daniel Scott
Connie Brawley	Eileen and John Iammarino	Diane Seccombe
Julia Brock	Judith Torrez and William Jewell	Sherri and Say Sengsouvanha
David and Prudy Brown	Kathleen and David Johnson	Fay and Henry* Shapiro
Patricia Vigilante and Robert Candela	Steven M. Johnson	Newton Sharp
Annette and Patrick Cavanagh	Debbie and Jerry Jordan	Nancy Shealy
Anne Chapman	Sheila Kaplow	Rachel Small
Cynthia Ann and John Chmielewski	Eileen and Frank Kealty	Randall Smith
Cynthia Clark	Rita and Robert Keating	Ruth L. Spaulding
David Cook	Elise Ketner	Sandra M. Stokes
Karen Countryman	Roberta and Raymond Klein	Elizabeth and Frank Streff
Maureen Cronin	Leny and Ben Kolsteren	Nancy and Jay Style
Carolyn and Monte Cunningham	Ann Nora Kruger	Dawn and Steven Switzer
Franci Dale	Kristin and Scott La Berge	Henry B. Thomas
Myla De La Cruz	Sharon Lackey	Doris and James Thureau
Linda and Charles DeLong	Rose and George Leek	Nancy and William Tidwell
Brian Denyer	Linda and Joseph Lerner	Patricia and James Wagner
Donald Detenber	Jean Novak and Mike LeTarte	Linda M. Wakefield
Niall Doherty	Kathleen and Charles Lewis	Peter and Marcia Webber
Joyce and James Donnell	Nancy and Don Lorenzen	Jill and Mike Weiland
Rene DValery and James Baker	Mary Jane Lundy	Charlotte and Joseph Werkmeister
Linda and Mark Edwards	Helene and Alan Marks	Theresa and Phillip Westine
Joseph Daniel Ellis	Laura McGlothlin	Becky and Charles Whitehead
Kate and Douglas Farrell	Marie Muccioli	Ray Andrew Wilkins
Donna and Lawrence Farrell	Karen and Edward Necela	David Wolf
Bernadette and Andrew Farrelly	Barbara L. Neilon	Sandy Kay Wytroval
Virginia Field	Marcelo Pakman	Julie and Van Zimmer
Donna Font	Phyllis and Tom Parker	
Clara and Charles Francis Gallagher	Marlys and Ralph Peterson	
Dean Gallea	Darlene Pickard	
Susan and Daniel Gannon	Joyce and Harold Piel	

\*deceased

## 4th Annual Comedy Celebration

On November 13, 2010, almost 1,200 guests packed the Wilshire Ebell Theatre in Los Angeles for the IMF's 4th Annual Comedy Celebration benefiting the Peter Boyle Memorial Fund, which supports the IMF's award-winning research program. The fundraiser raised nearly \$570,000 this year.

Loraine Boyle and returning co-chairs Amy and Steve Weiss once again rounded up an exceptional cast of comedians to come out in support of the IMF. As in previous years, the event was hosted by Ray Romano and featured appearances from fellow *Everybody Loves Raymond* castmates Doris Roberts and Fred Willard, as



well as Jeff Garlin from *Curb Your Enthusiasm*. In addition, this year's show benefited from the talents of Dana Carvey, Carlos Mencia, Alex Trebek, Annette O'Toole, and Susie Essman, and a special musical performance by Dr. Ken Jeong and Mike O'Connell.



The IMF welcomed attendees to a pre-show cocktail party



and silent auction that made a significant impact on the overall success of the event. Items up for bid in the auction included a guitar



signed by Bruce Springsteen, a behind-the-scenes



visit to *60 Minutes*, and a fantastic assortment of trips, memorabilia, jewelry, and more that were graciously donated for the cause. VIP guests were also treated to a post-show champagne and dessert reception that lasted well into the night.

## Member Fundraisers

Events held by IMF members around the country empower myeloma patients, their families, and their friends to make a difference on a community level. As the longest-running development program, Member Fundraisers have generated critical funds for the fight against myeloma through community events held nationwide.

IMF members held 63 events during the 2010-11 Fiscal Year, raising a total of \$397,400. Six of these events funded Brian D. Novis Research Grants – a testament to the efforts of regular people with an extraordinary dedication to the IMF's mission.

The IMF is tremendously grateful to this incredibly dedicated and passionate group of members who have a profound effect on IMF programs, services, and research initiatives.



**Rob Bradford**  
Apopka, FL

IMF member Chris Hollyer touched the lives of many. In 2005, Chris ran both the Association of Cancer Online Resources and the IMF listserv. His vast knowledge of myeloma and its treatment, his kindness and his energy allowed him to reach thousands of patients throughout the world.

After Chris passed away in 2006, the outpouring of both admiration and grief from members of both online communities was overwhelming. Members wanted to find a way to thank and honor him for his commitment to help patients.

One couple in particular decided to put their words into action. In September 2006, Kim and Rob Bradford began hosting the annual *Coach Rob Charity Golf and Benefit Bash* to support a Brian D. Novis Research Grant in Chris' honor. At the time of the inaugural event, Rob had just completed two rounds of chemotherapy and a stem cell transplant to treat his multiple myeloma. This two-day event was then, and is now, a labor of love; it is a way for Rob and Kim to return the support that they were given while he was treated for myeloma.

*"This event is a way to give back to all of the great people that assisted me in my time of need. It also supports finding a cure."*

**– Rob Bradford**

In December 2011, Kim and Rob Bradford's efforts resulted in a Brian D. Novis Junior Grant awarded to Dr. Caritha Madiraju. With this funding, in Chris Hollyer's honor, Dr. Madiraju can continue her work at the Sanford-Burnham Medical Research Institute on targeting UBC13-UEV1A for treatment of multiple myeloma.

Like all of our Brian D. Novis Grant winners, research pursuits will lead to improved quality of life for myeloma patients and families everywhere – including Chris Hollyer's listserv friends.





Autumn Tea



Bald-4-Bucks



Glee Club Performance



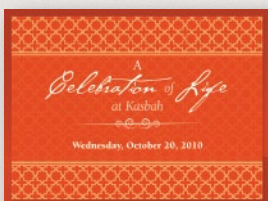
Fall Bocce Classic



A Wedding



Car Raffle



A Celebration of Life at Kasbah



## Member Fundraisers held between October 1, 2010 – September 30, 2011

### BENEFACTORS' CIRCLE \$25,000 AND UP

**Miles For Myeloma 5K**  
Philadelphia Multiple Myeloma Networking Group, Central New Jersey Support Group, Northern New Jersey Support Group  
Philadelphia, PA

**A Celebration of Life at Kasbah**  
Allan Weinstein  
Paradise Valley, AZ

**Coach Rob's Benefit Bash**  
Rob Bradford  
Apopka, FL

**Annual Carolyn Czerkies Charity Golf Outing**  
Czerkies Family  
Naperville, IL

### FOUNDERS' CIRCLE \$10,000 - \$24,999

**RHS Open**  
Suzanne Saletan and Family  
Wellington, FL

**Misbehave for Myeloma 2**  
Alexandra Zousmer and Joanna Share  
Chicago, IL

**J.C. Golf Tournament**  
David Johnson  
St. Cloud, MN

**Pytlík Walk of Hope**  
Barb Pytlík  
Tonawanda, NY

**A Song For Ireland**  
Doug and Kate Farrell  
Philadelphia, PA

**Honoring Peter Pritchett Fundraiser**  
Paul Wiesner  
Montrose, CO

**Matthew Jacobs Annual Fundraiser**  
Matthew Jacobs  
Frisco, TX

### PARTNERS' CIRCLE \$5,000 - \$9,999

**Music Against Myeloma**  
Slava Rubin  
New York, NY

**Bonacorsi Car Raffle Fundraiser**  
Mario Bonacorsi  
Barre, VT

**Bald For Bucks**  
David Chan and Steven Brown  
Bayside, NY

**Pipo's Fund For A Miracle**  
Cecilia Izquierdo  
Miami, FL

**Passport To A Cure**  
Greg Strouse  
Brighton, MI

**Glee Fundraiser**  
Allison Tuohy  
Prospect, CT

**Paparella Family Fundraiser**  
Carl Paparella  
St. James, NY

### ASSOCIATES' CIRCLE \$1,000 - \$4,999

**Fall Bocce Classic for The IMF**  
Dick Bloom  
Dayton, OH

### Bridge Blasts Myeloma

Ann Girod  
Potomac, MD

**Meredith Fiacco Memorial Golf Tournament**  
Melanie Nicols and Suzanne Fiacco  
Potsdam, NY

**Gary C. Heuer, Jr. Memorial Golf Tournament**  
Nancy Heuer  
Caledonia, NY

**Jack's 6th Annual Texas Hold 'em Benefit Bash**  
Jack Aiello  
San Jose, CA

**Dennis Werra Fundraiser**  
Jayson Werra  
New Berlin, WI

**Trooper Benson Klein Research Fund**  
Benson Klein  
Bethesda, MD

**Margaret R. Cole Memorial Fund**  
Roger Cole  
Upper Montclair, NJ

**Concannon Family Fundraiser**  
Karen Concannon  
Niantic, CT

**Central Florida Support Group Spaghetti Dinner**  
Ken Fabian and Dick Wells  
Apopka, FL

**Multiple Colors for Multiple Myeloma**  
Pam Larsen  
Honolulu, HI

**Bello Clambake**  
Mary Bello  
Avon Lake, OH

**Yee Casual Day**  
Carol Yee  
North Hollywood, CA

**Jeans Day Friday**  
Diplomat Pharmacy — Brenda Hawkes  
Flint, MI

**Leaving the Beach Fundraiser**  
Doug Farrell  
Philadelphia, PA

**Kennedy Backyard BBQ**  
Geri and Bill Kennedy  
Redwood City, CA

**Snook Casual Day**  
Su Snook  
Long Beach, CA

**Bon-Ton Fundraiser**  
Suzanne Fiacco and Melanie Nichols  
Potsdam, NY

**Schaap Fundraisers**  
Cyndi Schaap  
Lakeview, MI

**Margie's Road to Recovery**  
Judy Montgomery  
Scarborough, ME

**Sunday Brunch For A Cure**  
Ivy Prosper  
St. Catharines, Ontario, Canada

**Aloha Kakou Walk-A-Thon**  
Cyndi Schaap  
Lakeview, MI

**Marioni Salon Fundraiser**  
Kerri Marioni  
Newark, DE

**Jerry Walton's Veterans Against Myeloma Campaign**  
Jerry Walton  
Virginia Beach, VA

### FRIENDS' CIRCLE \$500 - \$999

**Bicycle Mojave and Beyond**  
Andrew Sninsky  
Newport Beach, CA

**Volvo Cars Jeans Day**  
Rockleigh, NJ

**An Autumn Tea**  
Debra Schuitt  
Temecula, CA

**Alpha Omega Chapter Fundraiser**  
Pam Kirkendoll  
Temecula, CA

**Morgan's Mitzvah**  
Morgan Machado  
Potomac, MD

**Briggs Wedding Fundraiser**  
Kathleen Briggs  
Comstock Park, MI

**Dinkins Fundraiser**  
Paula Dinkins  
Pasadena, CA

**MMA Fight Fundraiser**  
Doug Ehrhardt  
Arlington, VA

**Hoefflinger Wedding**  
Beth Hoefflinger  
Newtown, PA

**Basque San Francisco 5K**  
Julianne Basques  
Groveland, CA

**Monster Mile Fundraiser**  
Josephine Diagonale  
Delmarva Support Group (full name)  
Dover, DE

**Myeloma Buddies**  
Paula Kilgallon  
Rainford, St. Helens UK

**Who's Your Daddy Rally**  
Lisa Cash  
Paducah, KY

**Jeans and Jewels Gala 2**  
Lisa Mehalick  
Gibsonia, PA

**Miller Portrait Fundraiser**  
Kathy Miller  
Huntington Beach, CA

**Dancing For A Lourdes Cure**  
Jarmari Garcia  
Philadelphia, PA

**Hirschhorn for Myeloma**  
Steven Hirschhorn  
Overland Park, KS

**Our Friend Dan Fundraiser**  
Dan Odegard  
St. Paul, MN

**Ida's Day**  
Deborah Hadeka  
Castleton, VT

**Kindness for a Cure**  
Denice Bencel  
Quakertown, PA

**Paul Keddell's Veterans Against Myeloma Campaign**  
Paul Keddell  
Poquoson, VA

**Bob Brunner's Veterans Against Myeloma Campaign**  
Bob Brunner  
Virginia Beach, VA

# FINANCIAL STATEMENTS

## INTERNATIONAL MYELOMA FOUNDATION Statement of Financial Position September 30, 2011

### Assets

#### CURRENT ASSETS

Cash and cash equivalents	\$1,473,513
Contributions and other receivables	1,148,507
Prepaid expenses	330,223

<b>Total Current Assets</b>	<b>\$2,952,243</b>
-----------------------------	--------------------

#### PROPERTY AND EQUIPMENT, at cost

Furniture, fixtures and equipment	38,062
Computer equipment	127,671
Computer software	928,628
	1,094,361
Less accumulated depreciation	(438,652)

<b>Net Property And Equipment</b>	<b>\$655,709</b>
-----------------------------------	------------------

<b>TOTAL ASSETS</b>	<b>\$3,607,952</b>
---------------------	--------------------

### Liabilities and Net Assets

#### CURRENT LIABILITIES

Accounts payable and accrued expenses	\$622,605
Deferred and unrestricted educational grants	2,041,578
Current obligations under capital leases	2,668
Line of credit	25,000

<b>Total Current Liabilities</b>	<b>\$2,691,851</b>
----------------------------------	--------------------

<b>OBLIGATIONS UNDER CAPITAL LEASES, less current portion</b>	<b>3,503</b>
---	--------------

#### NET ASSETS

Unrestricted	912,598
Temporarily restricted	-

<b>Total Net Assets</b>	<b>\$912,598</b>
-------------------------	------------------

<b>TOTAL LIABILITIES AND NET ASSETS</b>	<b>\$3,607,952</b>
---	--------------------

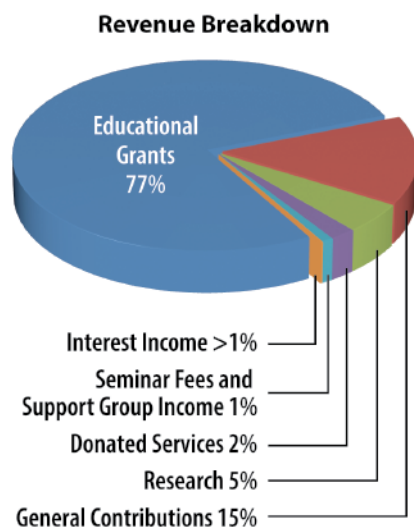
For a copy of our complete audited financial statements, please contact the IMF office



# INTERNATIONAL MYELOMA FOUNDATION

## Statement of Activities

### For the Year Ended September 30, 2011



#### Change in Unrestricted Net Assets

##### REVENUES

Educational grants	\$6,829,672
General contributions	1,298,889
Donated goods and services	175,651
Seminar fees and support group income	79,446
Interest income	9,620
<b>Total Revenues</b>	<b>\$8,393,278</b>

##### Net Assets Released From Restrictions

Satisfaction of program restrictions	\$440,932
--------------------------------------	-----------

**Total Unrestricted Revenue And Other Support \$8,834,210**

##### Expenses

Program expenses	7,829,756
General supporting expenses	483,057
Fundraising expenses	551,452

**Total Expenses \$8,864,265**

**DECREASE IN UNRESTRICTED NET ASSETS (30,055)**

##### Changes in Temporarily Restricted Net Assets

Contributions	220,150
Fundraising event, net of direct benefit to donors of \$365,390	220,782
Net assets released from restrictions	(440,932)

**Change in Temporarily Restricted Net Assets -**

**Decrease in Net Assets (30,055)**

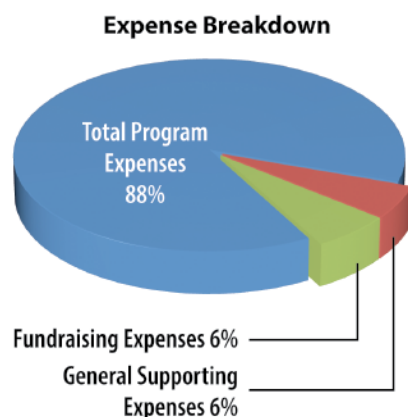
**NET ASSETS, September 30, 2010 942,653**

**NET ASSETS, September 30, 2011 \$912,598**

*For a copy of our complete audited financial statement, please contact the IMF office*

## INTERNATIONAL MYELOMA FOUNDATION

### Statement of Functional Expenses For the Year Ended September 30, 2011



Total Program Expenses	\$7,829,756
General Supporting Expenses	483,057
Fundraising Expenses	551,452

<b>Total Expenses</b>	<b>\$8,864,265</b>
-----------------------	--------------------

#### Breakdown of Expenses by Program

PROGRAM	TOTAL EXPENSES
Research	\$1,481,493
Patient & Family Seminars	924,144
Education and Awareness	919,708
International	897,733
Nurse	856,111
Support Groups	566,664
Clinical Meetings	470,986
Advocacy	416,742
Myeloma Today	352,967
Hotline	305,137
Website	234,678
Public Relations	188,744
Information Mailings	172,783
Myeloma Manager	19,167
Bank On A Cure®	16,000
Myeloma Advisor	6,699

<b>Total Program Expenses</b>	<b>\$7,829,756</b>
-------------------------------	--------------------

*For a copy of our complete audited financial statement, please contact the IMF office*

# HONOR ROLL

The International Myeloma Foundation gratefully acknowledges the many people and organizations that have made contributions to our various programs and projects during the past year. Without them, the IMF would not be able to continue providing the excellent, high-quality programs and services upon which our members have come to rely. Their generosity allows the IMF to:

- Invest wisely in research programs like the International Myeloma Working Group, that lead to better treatments for patients today while also funding research grants that lead to critical breakthroughs for tomorrow;
- Advocate on behalf of the entire myeloma community to promote legislation to increase the availability and accessibility of all approved drugs;
- Develop and maintain its highly acclaimed website performing daily updates of the most relevant information available and make available 24 hours a day to all those interested in myeloma;
- Support the IMF's network of over 150 support groups through leadership training, educational materials, and assistance in securing guest speakers and teleconferences with the Hotline;
- Maintain the Hotline and ensure that its coordinators are up to date on the latest research and treatment options so that patients, family, and friends always have a place to turn;
- Expand successful programs such as the Regional Community Workshops to reach even more patients and families, while maintaining unwavering support of established and relied-upon programs like the Patient & Family Seminars;
- Continue to produce and regularly update the more than 100 publications that support patients, doctors and nurses in making informed treatment choices.

*The IMF is dedicated to improving the quality of life of myeloma patients while working toward prevention and a cure.*

**The IMF is here for you.**

## Chairman's Circle \$100,000 and above

Alice and Louis Weiss  
AMGEN Oncology  
The Binding Site, Ltd.  
Celgene Corporation  
Genzyme Corporation  
Medtronic, Inc.  
Merck & Co.  
Metzger Law Group  
Millennium: The Takeda Oncology Company  
Novartis Pharmaceuticals  
Onyx Pharmaceuticals, Inc.  
The V & L Marx Foundation

## President's Circle \$50,000 - \$99,999

CBS Corporation  
Dorothy and John O'Dwyer

## Benefactor's Circle \$25,000 - \$49,999

The Binding Site Group Ltd.  
Coach Rob's Benefit Bash, Inc. /  
Kimberly and Robert Bradford  
Susie Novis and Dr. Brian Durie  
General Atlantic Corporation  
Donna and Steve Feig  
James Manley  
Philadelphia Multiple Myeloma  
Networking Group  
Raymond James & Assoc. / Robert Ebersole

## Founder's Circle \$10,000 - \$24,999

Bristol-Myers Squibb Company  
Cancer Cure of America  
Diplomat Specialty Pharmacy  
Eli Lilly and Company  
Joel Frank and Laurence Klurfeld  
Charitable Fund  
Genentech, Inc.  
HBO Inc.  
Spencer Howard  
Dr. Robert Hugin  
J&J / China  
J.C. Invitational Golf Tournament /  
Beverly Lundorff  
John J. McDonnell &  
Margaret T. O'Brien Foundation  
Laurie and Andrew Kuzneski  
Christian E. Ledley\*  
Joy and Bill McGinnis  
Alex Meneses and John Simpson  
Microsoft Community Affairs  
Marla and Lowell Paxson  
Pro Ed Communications, Inc.  
Estate of Paul Rehorst  
Monica and Philip Rosenthal  
Sebia, Inc.  
Iris and Michael Smith  
Louise Takata  
Walsh Street Foundation / Henry Belber  
Phyllis and Allan Weinstein  
Worldwide Pants, Inc.

## Partner's Circle \$5,000 - \$9,999

12650 Riverside Drive Office Building  
Barre Rotary Club  
Cephalon, Inc.  
Clifford and LaVonne Graese Foundation  
Gail-Ann and Joe Colaruotolo

Complete Healthcare  
Communications, Inc.  
David Geffen Foundation  
Carlos J. Carces Eder  
Estate of Margaret Holdren  
Cindy and Robert\* Feltzin  
Frank Carl Bragoli Memorial  
Award Fund, Inc.  
Cindy and James Gilbert  
Clare and Seth Green  
Charlo and Dale Herbrandson  
Indianapolis Colts, Inc.  
Janssen-Cilag C.A.  
Peter Jessup  
Susan and Michael Katz  
Carol and Benson Klein  
Leaf, Barley & Vine LLC  
Jill Greenwald and Jon Lieberman  
Nancy Neff  
PeggyAnn P. Hospice Walk  
Schwab Fund for Charitable Giving  
Small Army For A Cause  
Stifel Nicolaus & Company, Inc.  
T. Rowe Price  
Rose and Sherle Wagner Foundation /  
Amy Wagner  
Michael Winkler  
Zousmer Family Foundation /  
Michele and Arnold Zousmer

## Associate's Circle \$1,000 - \$4,999

Paige Abadi  
Kevin and James Abernathy  
Fred Chrishon Addison  
Nelleke and Jack Aiello  
Amazon.com, Inc.  
Sandra and H.P. Andrews  
Susan and Frank Armo  
Telat Ashraf  
Avnet  
Sol and Meri Barer  
Marty Barrett  
Harry Bartley  
Natalie and Tom Bell  
Bench Warmers Inc.  
Phoebe and Mike Benziger  
Jessica Blinkoff\*  
Bloom Hergott Diemer/  
Ruth and Jake Bloom  
Lisa and Richard Bloom  
Richard Boisture  
Thomas and Marcia Berger  
Noeline and Henri Boshoff  
Mitzi and Gerald Bozarth  
Branch Banking and Trust Company  
Wendy Breslow  
L.J. Brewer  
Carrie Brillstein  
Ann and Donald A. Brown  
David and Prudy Brown  
Nancy and Michael\* Bruno  
Charles Buerk  
Mari and Ward Bukofsky  
Robin Green and Mitchell Burgess  
Colleen and John Busch  
Capital Group Charitable Foundation /  
Leigh A. Morris  
Nilene and Arnold Chase  
The Chicago Community Foundation  
Dianna and Hunter Chiles  
Karen Chopra  
Louise and Frank Chut  
Citir Cooperman & Company, LLP  
Coalition of Cancer Cooperative Groups  
Gail and Harold Cohen  
Karen and Paul Concannon  
Janice Corwin  
Marilyn and Lee Cox  
Barbara and James Coy  
Beverly\* and Jon Cross  
Timothy Crudo  
Kathy and Howard Cucher  
John A. Cutler  
Craig Czermak  
Frances Daley  
David A. Beckerman Foundation  
Davis Wright Tremaine LLP  
Betsy and Paul Dawes  
Aldo Del Col  
Design Printing  
Donna and Mark Di Cicilia  
Gordon Doble  
Dr. Armand Dorian  
Herbert Dornbusch  
Alice Duffy  
Debbie and John Dyer  
Eclipse Band LLC  
Clarice L. Eder  
Vince and Mary Jo Elhilow  
Joseph Daniel Ellis  
Nil Erdal  
Estate of Janice Mileo  
Frances Fahsel  
Kate and Douglas Farrell  
Stephanie Hope Feld  
Jill Freeman  
Barbara and Buddy Freitag  
Sid Fry  
Thomas R. Fuhrman  
G&S Auto  
Judie and Howard Ganek  
Susan and Daniel Gannon  
Garden State Pharmacy Owners, Inc.  
Stephen Gendel  
JoAnn Gilbert  
Michele and Michael Ginsburg  
Virginia Gloor  
Nancy and Gary Goodenough  
Google Matching Gifts Program  
The Gores Group  
Susan and Richard Grusman  
Sharon Greenwood  
David Gresens  
Roslyn and Harold Grueskin  
Erwin Gudelsky  
Gursey | Schneider LLP  
Kathleen Hamburger  
Anne Hansen  
Kenneth Harris  
Judith Hartig-Osanka  
Landis V. Haugen  
Helene S. Whitman Memorial  
Cancer Fund / Joel Whitman  
Helping Hand Associates  
Mr. Jason P. Hendler and Mr. Chad Billmyer  
Michael G. Heuer  
Winnie Holzman and Paul Dooley  
Jeffrey Hu  
Tamara and David Hubler  
Robert J. Hurley  
Juli and Herb Hunter  
IBM Corporation  
Independent Charities of America  
Mike Jackson  
Thomas Jacobson  
Janssen-Cilag - Panama  
Janssen-Cilag  
Kieran Jay

Nan and Michael Johnson  
Sara and Rafael Kapustin  
Arnold Kas  
Nancy Kelsey  
Kenneth A. Abrams  
Charitable Foundation  
Esther and Bernard Klein  
Roberta and Raymond Klein  
Connie and Gary Kluever  
Kathleen\* and Edgar Koschmann  
Pat Koval  
KPA Services, LLC  
Kennetha and John Krehbiel  
Charlene and Dr. Robert Kyle  
Richard LaGravenese  
Andrew G. Lebkuecher  
Tony LeDonne  
Keith B. Leffler  
Linda S. Leffler  
John Lemieux  
Adrienne Levine  
Samantha Gerber and Eric Levine  
Adrienne and Martin Levine  
Joan and Evan Lewis  
Lively's Washmobile INC.  
Katherine and Carl\* Locher  
Kerri and Thomas Mahan  
Joann K. Malta  
Elizabeth Manczak  
Maurice and Carol Feinberg  
Family Foundation, Inc.  
Leroy and Delano Burton\* May  
Jamie Duran Mazuera  
Patty and Fred McClintock  
Toni and James McCook  
Rose Linda Meltzer  
Merck Partnership For Giving  
Meredith Fiacco Memorial  
Golf Tournament  
Deborah and Charles F. Metzger  
Microsoft Giving Campaign  
MaryAnn Miller  
Millis, Jenkins, & Hahl  
Nicole and David Mitchell  
Linda Molitor  
Montclair Beach Club, Inc.  
Judy Montgomery  
Montrose Memorial Hospital  
Susan and Richard Moore  
Diane Moran and Archie Go  
Morgan Keegan & Company  
Leigh Morris  
Mtv Networks  
Network for Good  
James Nevik  
New York Life Giving Campaign  
New York Life Insurance Company  
Sharon and Chuck Newman  
Kevin Nicewonder  
Carol and Thomas Nicklaus  
Nuveen Investments  
John O'Dwyer  
Margaret and Russell Okasako  
OverDrive, Inc.  
Anne M. Pacowta  
Paradigm  
Joy and Ronald Paul  
Allan Pearson  
Diane and Rick Pedack  
Sandy and Steve Perlinder  
Frances A. Petroziello  
Pincus Family Foundation /  
Leslie Pincus  
Bradford Porter

Premier, Inc  
S. Vincent Rajkumar, MD  
Doug Reinhardt  
Desiree Asher Reynolds  
Lawrence Reynolds  
Ariane Ricca  
Judith and Milton Riseman  
Rittenberg Family Foundation/  
Cindy and Leon Rittenberg, Jr.  
Sylvana and Matthew Robinson  
Laurie K. Robinson  
Robert Rome  
Janet and Marvin Rosen  
Sandy and Mark Rothman  
Marilyn and Gerald Royce  
Kim and Dr. Marty Rubin  
SakeOne  
Kimberly Saletan  
Suzanne Saletan  
Salon 926 LLC  
The San Francisco Foundation  
Robert Santos  
Beverly Sassoon  
Janice Scanlon\*  
Cyndi and David Schaap  
Ilona and E. Michael Scott  
Carrie\* and David Powers  
Semptra Energy  
Siemens Caring Hands Foundation  
Cynthia and Igor Sill  
Anne Marie Silver  
Mary Anne Siska  
Keith Small  
Daphne Smith  
RuthAnn and Charles Spirakis  
Virginia Stahlsmith  
Janet Stanard  
Michael Stone  
Talisman Energy, Inc.  
Dorothy and Hollis\* Tinsler  
Tolleson Management LP  
Mary and Terry Tomann  
Truist  
Linda Van Kessler  
Paula Van Riper  
Sue and Harold VanDuyn  
Dr. David Vesole  
Karen and Kent Vorhies  
Barbara and John David Wainwright  
Marjorie and Joe Walsh  
Lindsay and Jerry Walton  
Patricia and Clark Ward  
Roberta and Marvin Waronoff  
Rand and Charles Wax  
Gayle and Evan Weiss  
Paul Wiesner  
Kristi and Chick Willette  
William Morris Endeavor Entertainment  
Jan Williams  
Sharyne and Mitchel Wolfe  
David L. York

## Friend's Circle \$500 - \$999

Abbott Laboratories  
Employee Giving Campaign /  
Spama T. Mehta and Donna Wilkinson  
Mona Abrams  
Franz A. Adler  
Aegis Matching Gift Program  
Pamela Ahlen  
Lois and Bernard Akin  
Lee J. Allen  
Mary Ann and Jeffrey Allyn  
Alpha Omega Chapter /  
Theta Chi Epsilon Sorority  
Linn Anderson  
Mary and Robert Andriola  
Aptium Oncology, Inc.  
Rosemarie Aramanda  
Carolyn Armington

AT&T Employee Giving Campaign  
Jennet Walker and John Auerbacher  
Bae Systems Employee  
Community Fund, Inc.  
Baker & Hostetler LLP  
Lauren and George Baker  
Madelyn and Kamel Baladi  
Dusten Balderrama  
Pauline and Kenneth Barclay  
Carole and Norman Barham  
Barnes Group Foundation, Inc.  
Marion and Henry\* Becker  
Bela B. Nevai & Clara Nevai  
Charitable Foundation  
Malea and Michael Bell  
Mike Bell  
Marcy Bernstein  
Jack M. Berry, Jr.  
Jerome Bess  
Arin Assero and Steve Bessen  
Best Western Kodiak Inn  
Jayne Bianchi  
Debbie and Jeff Birns  
Blessed Trinity Parish  
Blue Shield of California  
William Blum  
Vera Bond  
Maggie and Norman Brokaw  
Betsy Burgett  
Susan Cahn and Mario Batali  
Colleen Campbell-Miller and  
Philip W. Miller  
Jeff Cao  
Denise Carmody  
Jack Carter  
CDS Property Group  
David Chan  
Beatrice Chaney  
Georgann and Ron Charlton  
Chevy Chase  
Michael Chernuchin  
Monica Chill and Victor Alas  
Willis G. Clark  
ClubPokerLeague LLC  
Valerie and Gary Clucas  
Gary Cole  
Kitty and Byron Collier  
Judith and Neil Collier  
Ronald Collman  
Community Foundation of New Jersey  
Connecticut Multiple Myeloma Fighters  
Christy Corrigan  
Corsetti Structural Steel  
Mary Turner and Kelly Cox  
Leslie Cutler  
Mike Daleiden  
Michael Daley  
Dallas Support Group  
Blythe Danner  
Charisse and John DeFlice  
Carol and Robert Delsman  
Brigitte Demes  
Dennis A. Quinn & Associates  
The Department  
Beth DeWoody  
Ann Dieperink  
Yvelisse Tejeda Dinte and Paul Dinte  
Sandra Drant  
Patti and Peter Dunn  
Ben Durie  
Annette and Joseph Dutton  
Joan and Doug Edelen  
Michael Eisenbrey  
Barbara and David Elson  
Employee's Community Fund  
Of The Boeing Company  
Spyros Fabrikant  
Karen and Matthew Falcone  
Charlotte and Harold Feder  
Pam and Art Ferrario  
George Speen

Melissa Fisher  
William P. Fisher  
Tom Fontana  
The Foundation For Jewish Philanthropies  
Jeanne and Robert Fowler  
FPC Consulting, LLC  
David R. Francesciani  
Lana and Paul Franklin  
Paul Fridell  
Jan and Don\* Froeschle  
Ursula and Jim Gaines  
Katherine Garay  
E.H. Gardner  
Marilyn and Gerald Gelfand  
David Girard  
Len Giuffre  
Give With Liberty  
Goldman, Sachs & Co.  
Matching Gift Program  
Ronda Gomez-Quinones  
Marvin Gottlieb  
Patricia Gradillas  
Donna Wyatt and Daryl G. Graham  
Roberta and Arnold Greenberg  
Wendy Barish and Michael Greenstein  
Susan A. Gregory  
Margaret and Patrick Grippe  
Virginia E. Gunderson  
Marc Gurvitz  
Robert J. Haggerty  
William J. Handlin  
Erica Hansen  
Erica Hanson and Joshua Elbaum  
Susan Heard  
Betty and Steve Herman  
Rose Anne Herrmann  
David Chan  
Beatrice Chaney  
Georgann and Ron Charlton  
Chevy Chase  
Michael Chernuchin  
Monica Chill and Victor Alas  
Willis G. Clark  
ClubPokerLeague LLC  
Valerie and Gary Clucas  
Gary Cole  
Kitty and Byron Collier  
Judith and Neil Collier  
Ronald Collman  
Community Foundation of New Jersey  
Connecticut Multiple Myeloma Fighters  
Christy Corrigan  
Corsetti Structural Steel  
Mary Turner and Kelly Cox  
Leslie Cutler  
Mike Daleiden  
Michael Daley  
Dallas Support Group  
Blythe Danner  
Charisse and John DeFlice  
Carol and Robert Delsman  
Brigitte Demes  
Dennis A. Quinn & Associates  
The Department  
Beth DeWoody  
Ann Dieperink  
Yvelisse Tejeda Dinte and Paul Dinte  
Sandra Drant  
Patti and Peter Dunn  
Ben Durie  
Annette and Joseph Dutton  
Joan and Doug Edelen  
Michael Eisenbrey  
Barbara and David Elson  
Employee's Community Fund  
Of The Boeing Company  
Spyros Fabrikant  
Karen and Matthew Falcone  
Charlotte and Harold Feder  
Pam and Art Ferrario  
George Speen

Jamie Larsen  
Laurie Lasseter  
Carol Le Roy  
The Learning Shop  
Helen and Fay Lee  
Yow Yuh Leu  
Nancy and Larry Levitt  
Kathleen and Charles Lewis  
Elizabeth and Patrick Lezark  
Drek Lipp  
Randi Lundy  
Mary and Ken Makowka  
Brian Mann  
Michael F. Marek  
Richard Mayo  
Jill McAllister  
Carol and Robert McCoy  
Michael McLemore  
Elizabeth and Bill Mcleod  
Medco Employee Giving Campaign  
Nelly Medeiros  
Nancy and Christopher Meier  
Lorraine and Joseph Merluzzi  
Edwin Miller  
Luvisminda Milo  
Tom Mingen  
Natilee\* and Kenneth Mintz  
Edith Mitchell  
Michael Mobley  
Ellen Moore  
Lori Morden  
Lawrence Moreland  
John Morrell  
Kaylene Moss  
Motorola Foundation  
Craig and Aline Napoli  
Nathan Family Foundation  
Lorraine and Melvine Navone  
Pamela Nemecek  
Margaret and Daniel Nencka  
Joan O'Callaghan  
Laura Anne O'Donnell  
Patricia and James Omel  
Joy Paul  
Peacock Construction, Inc.  
Letitia Anne Peplau  
Karl Pettijohn  
Ronald Petty  
Phillippe Family  
Judith and Philip Phillips  
Beki Pcus  
Barbara and Mark Rabin  
Mary\* and Jose Randall  
Recellular, Inc.  
Michael Reinert  
Jim and Abigail Rich  
Brian Rodgers  
Sara and Richard Rosene  
Rosenson Family Foundation  
Harold Rosenson  
Phillis Rosenthal  
Rotary Club of York-North  
John D. Rybarczyk  
Mary B. Schaefer  
Joan and Zoltan Schelly  
Jan and Doug\* Schmeeckle  
Frank Schreiner  
William H. Schubert  
Diane Seccombe  
Joanna Share  
Rosemary and David\* Shea  
The Sherwin-Williams Company  
Sherwood Inc  
Gloria Shulman  
Christine M. Simpson  
David Sloan  
Rachel and Michael Small  
Ursula and William Smeader  
Maryanne and Charles Smith  
Martha and Olvis Spencer  
Karen Jones Squires and James Squires

Ronnie and Joe Stabler  
Diane and Steven Staves  
Anne Stephens-Aronin  
Phylis and Richard Stern  
Taffy J. Stern  
Dan Stevenson  
Riza Stillwell  
Sam Stone  
Larry E. Stump\*  
Nancy and Jay Style  
Mindy and Randolph Tammara  
Jan Tanner  
Sherrill and Gene Taylor  
Katharine and David Teitelbaum  
Soren Thorvald  
Nancy and William Tidwell  
Suzie C. Tindall  
Debbie and Albert Tone  
Terence Tracey  
Catherine and W. Roger Trenkle  
Jiann D. Tsai  
Virginia and Walter Tulip  
Robin and Michael Tuohy  
Rita Ullman  
Eva Ung  
United Technologies Matching Gift  
& Volunteer Grant Programs  
United Way of Central New Mexico  
United Way of DEAP  
Upside Group Franchise Consulting  
Raymond Uzanias  
Mary and Raymond Vaillancourt  
Valley Auto Wreckers  
Lynn and Franklin Vogel  
Kathryn F. Waldron  
Mary and Bob Waldrop  
Karen and Brian Walls  
George Ward, Jr.  
Ryan J. Watts  
Brian Weber  
Stuart Weinberg  
Justin Weiss  
Wells Fargo Community  
Support Campaign  
Rita and Henry Wells  
Holly and Jayson Werra  
Dale White  
Robin and Charles Wilkins  
Mark Wittcoff  
Caroline and Herbert Wolf  
Winthrop Wyman  
Sandy Zemer  
Walter Zifkin  
Judy-Ann Zoghby  
Alexandra Zousmer

The IMF's 2011 fiscal year ran October 1, 2010 – September 30, 2011. This list includes gifts received between those dates. We apologize for any omissions or errors. Please call the IMF office to report any corrections needed.

Every gift is appreciated by the IMF. Every dollar counts. More than 5,100 people contributed gifts between \$1 and \$499, totaling \$538,225 of support for programs, services, and research. Unfortunately, space does not allow for everyone's name to be listed but every donor is deeply valued.

\* deceased

*Improving Lives • Finding the Cure*

FOR



**INTERNATIONAL MYELOMA FOUNDATION**

12650 Riverside Drive, Suite 206

North Hollywood, CA 91607 USA

800-452-CURE

[TheIMF@myeloma.org](mailto:TheIMF@myeloma.org)

[myeloma.org](http://myeloma.org)