



Snowflake Bentley

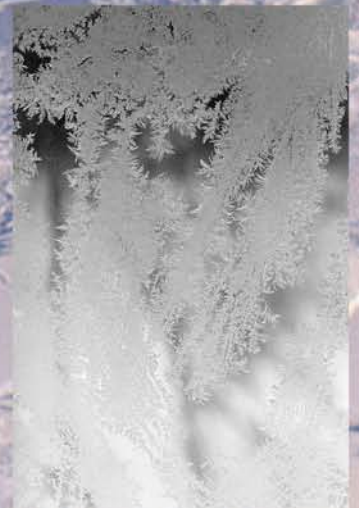
by Jacqueline Briggs Martin

five in a row volume 4

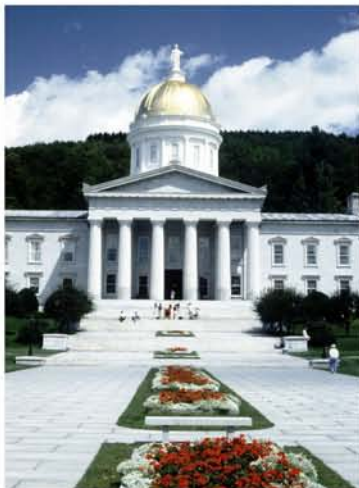
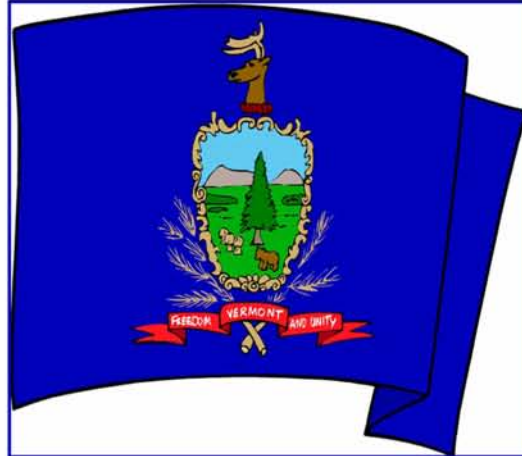
Snowflake Bentley

by

Jacqueline Briggs Martin



Find Vermont and color it in





Some great websites about Vermont!

<http://www.50states.com/vermont.htm>

<http://www.agclassroom.org/kids/stats/vermont.pdf>

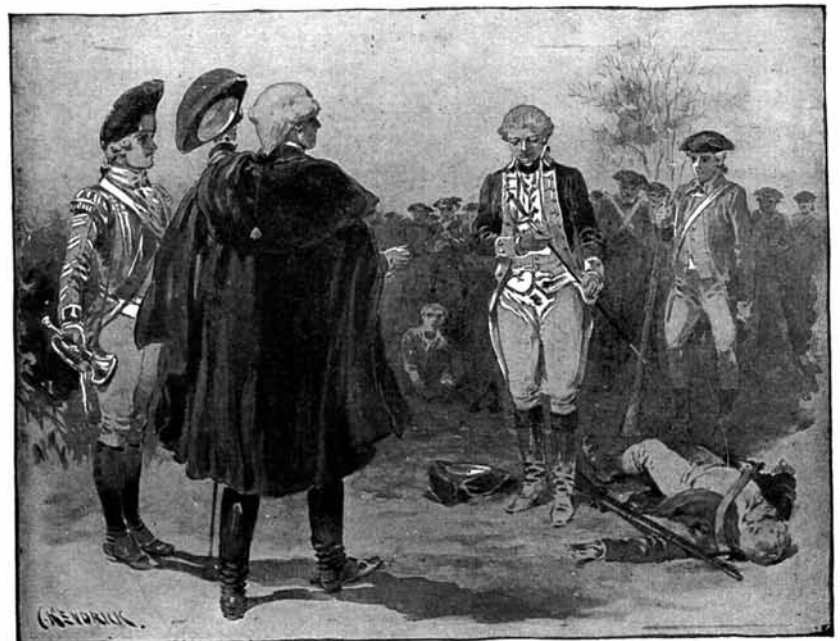
<http://freepages.genealogy.rootsweb.ancestry.com/~vermontgenealogyresources/History.htm>

<http://www3.thingstodo.com/states/VT/history.htm>

http://www.netstate.com/states/geography/vt_geography.htm



Ethan Allen
1738-1789



<http://www.historycentral.com/Bio/RevoltBIOS/AllenEthan.html>

<http://odur.let.rug.nl/~usa/B/allen/allenxx.htm>

<http://www.virtualvermont.com/history/eallen.html>

LOOK WHO WAS HOMESCHOOLED!



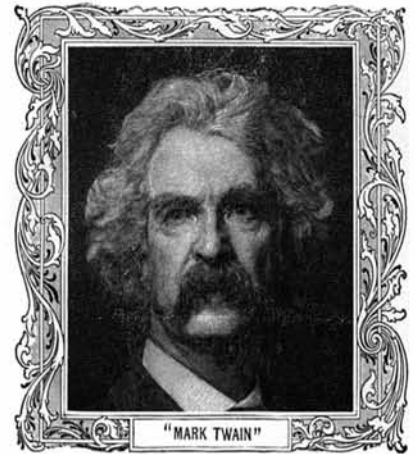
DaVinci



Mozart



LIEUTENANT ROBERT E. LEE.



"MARK TWAIN"



FLORENCE NIGHTINGALE
1820-1910



Clara Barton



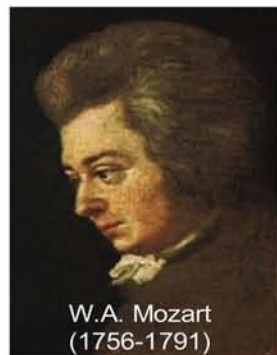
Agatha Christie



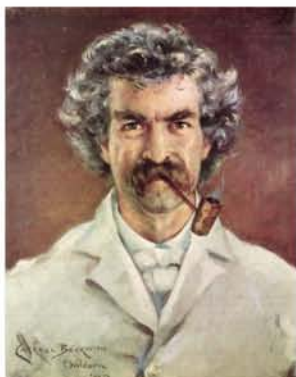
ABRAHAM LINCOLN
1809-1865
Statue by W. Randolph, Lincoln Park, Chicago



C.S. Lewis



W.A. Mozart
(1756-1791)



Mark Twain



Ansel Adams

Place your
photo
here!

Want to see more?
Watch this cool
you tube video

<http://www.youtube.com/watch?v=xzidw2rJUbw>

And more on this website below:

<http://sharebradenton.homestead.com/Famous.html>



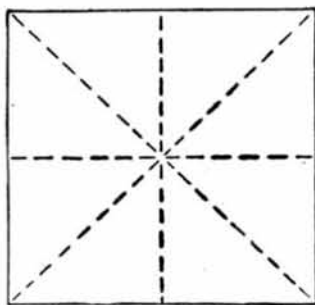
William Bentley 1865-1931

Websites to check out:

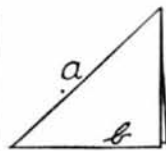
<http://snowflakebentley.com/>

<http://www.bentley.sciencebuff.org/Bio.htm>

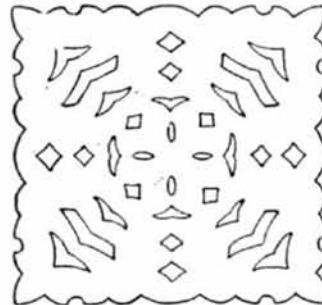
"Under the microscope, I found that snowflakes were miracles of beauty; and it seemed a shame that this beauty should not be seen and appreciated by others. Every crystal was a masterpiece of design and no one design was ever repeated.,
When a snowflake melted, that design was forever lost. Just that much beauty was gone, without leaving any record behind."



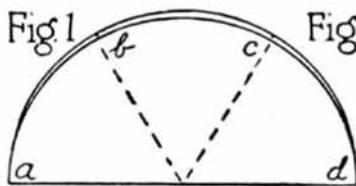
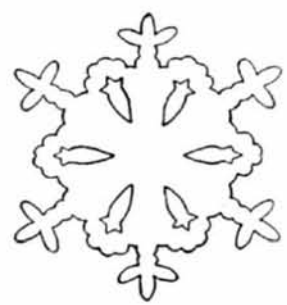
Bookfold



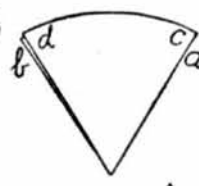
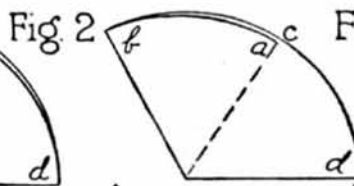
Fold on Diagonal-
"a" and "b" Are
Folded Edges



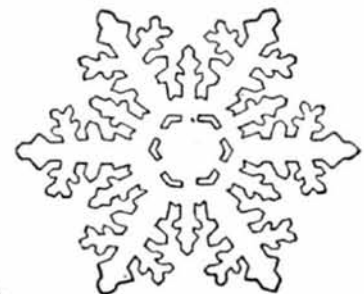
Cut Notches in Any Manner



Fold Circle on
Dotted Lines
into Sixths



SNOW STARS



Look up the definition of Persistence and write it below:



small and detailed



hit repeatedly in
rapid succession



in photography, this refers to the
film itself where the light and
dark areas are reversed



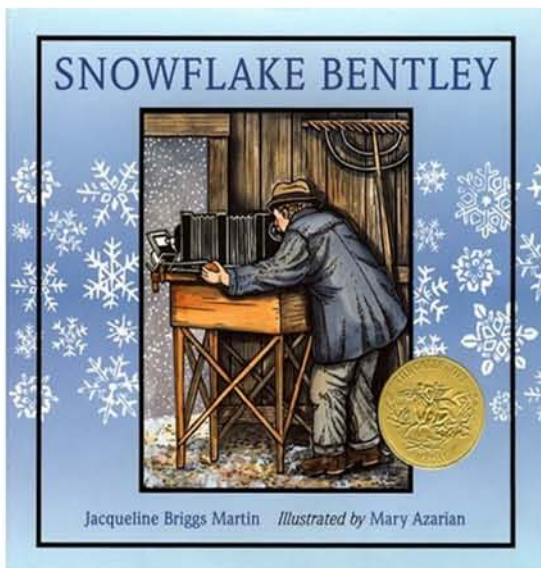
pictures or photographs



to make something
appear larger



an art form created through
the corrosive properties of an acid



Randolph Caldecott
(1846-1886)

To read a biography and other info on Randolph Caldecott:

<http://www.rcsamerica.com/rc.html>

<http://www.randolphcaldecott.org.uk/index.htm>

<http://www.iupui.edu/~engwft/caldecott.htm>



Work by Randolph Caldecott





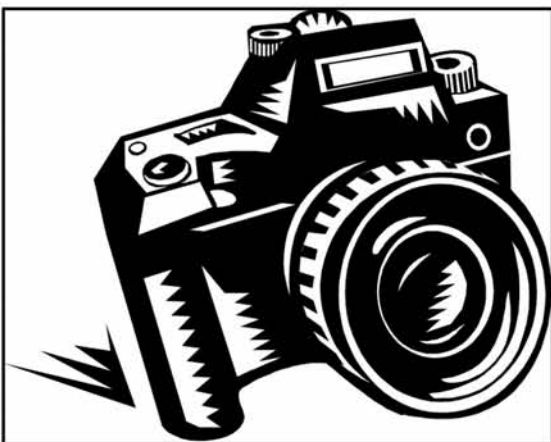
Woodcut Art Examples

Mary Azarian was the artist for Snowflake Bentley and you can learn more about her by visiting these websites:

<http://orchard.sbschools.net/library/authors/azarian/index.h>

<http://www.maryazarian.com/>

<http://www.nccil.org/experience/artists/azarianm/index.htm>



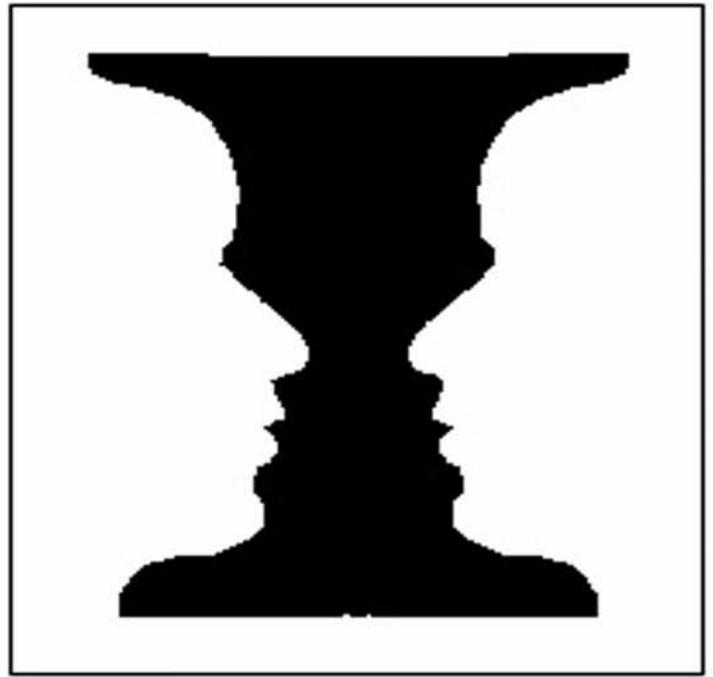
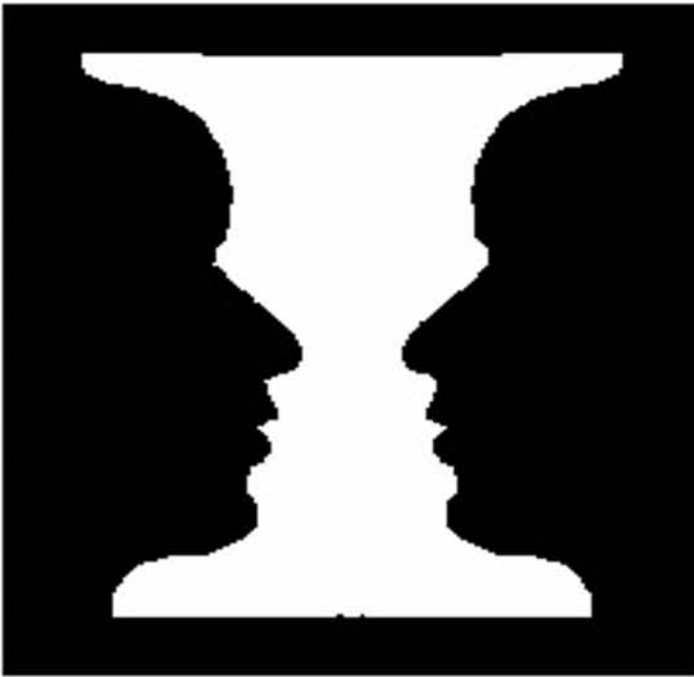
Here is a great site with lots of info on photography. If you want to learn more about photography there is lots to learn at this site.

<http://www.azuswebworks.com/photography/index.html>

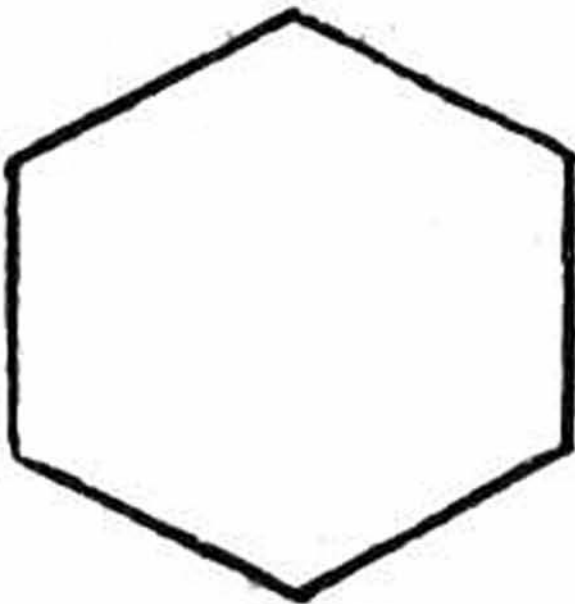


If you have a camera or have access to a camera this would be a great time to practice taking some pictures You can read about it on the website and then put what you read into practice. Have som fun with it and see what you can come up with..





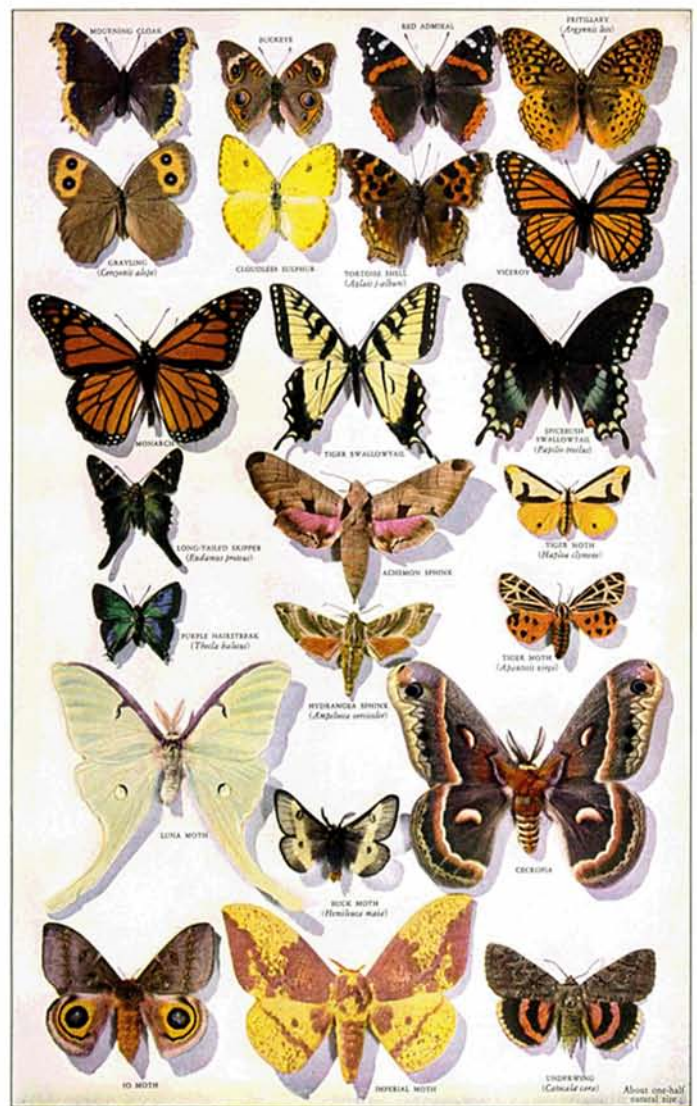
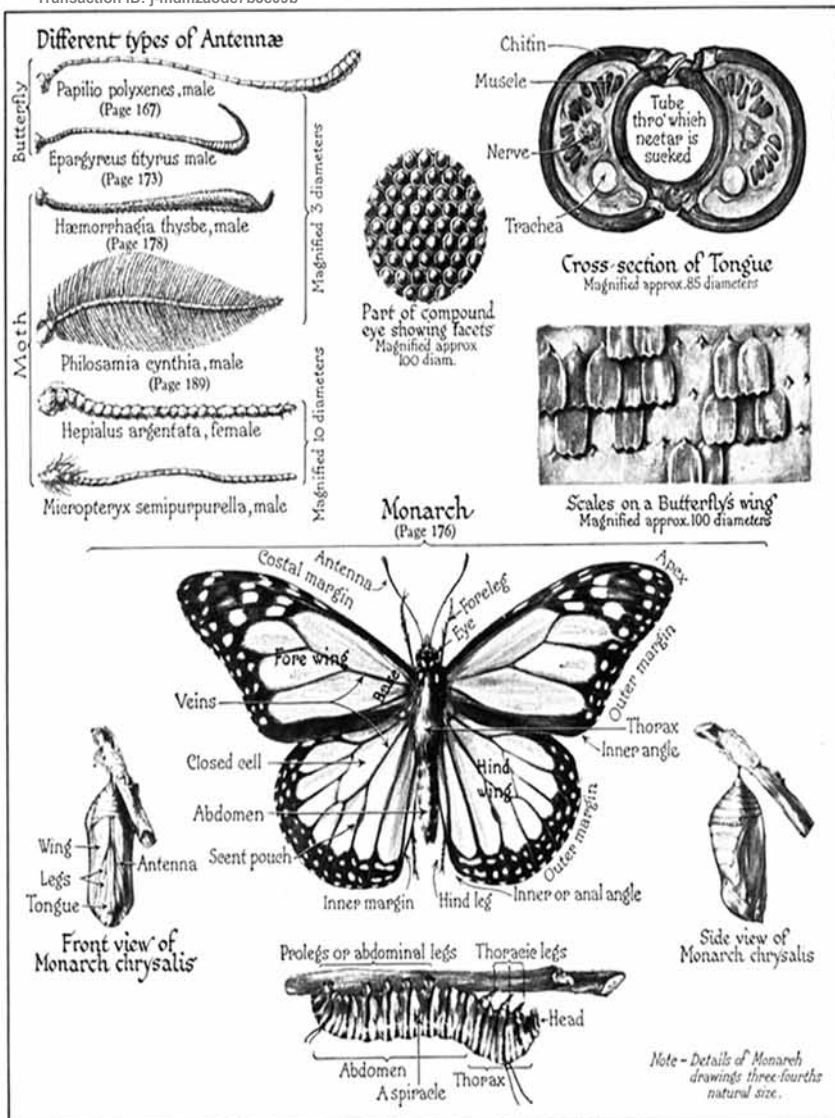
Negative Space is considered the areas
of the picture which are empty-free of objects
What do you see in the picture above?
Do you see faces or a vase or both?



How many side does
the above hexagon have?

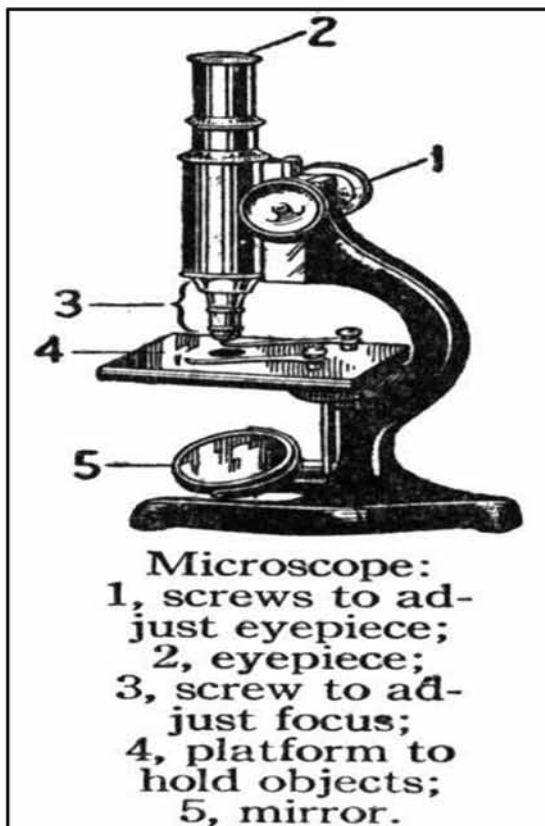


What do the hexagon and the
snowflake have in common?



http://www.ansp.org/museum/butterflies/new_interactive/butterflies.html
<http://animals.nationalgeographic.com/animals/bugs/monarch-butterfly.html>
<http://www.kidsbutterfly.org/>
<http://www.shrewsbury-ma.gov/schools/beal/curriculum/butterfly/butterflyinfo.htm>
http://www.defenders.org/wildlife_and_habitat/wildlife/butterflies.php





Anton van Leeuwenhoek
for a biography of Anton go here
<http://inventors.about.com/library/inventors/blleeuwenhoek.htm>

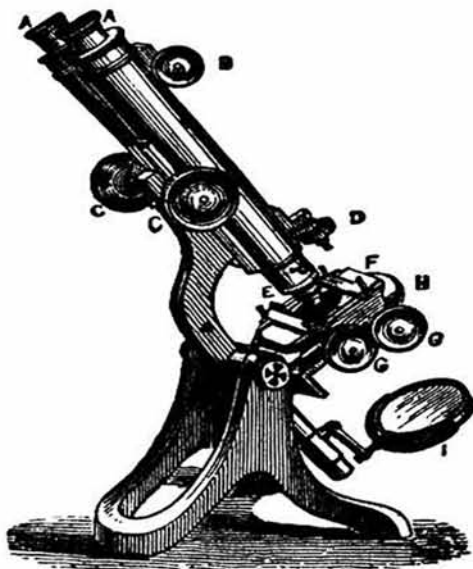


Want to learn some more about microscopes? Look at these websites

http://www.yesmag.ca/how_work/microscope.html

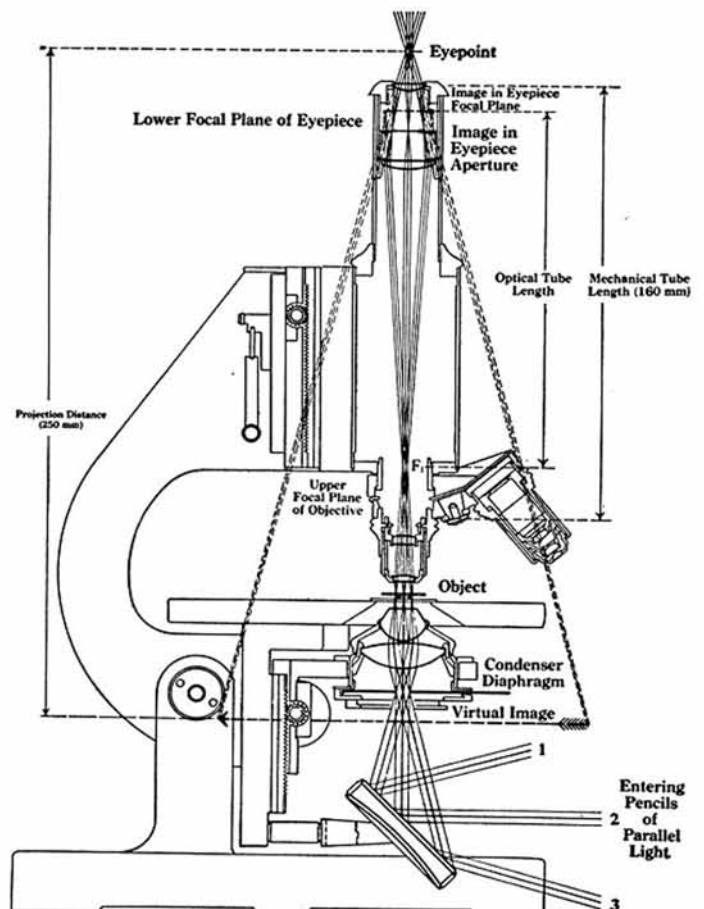
<http://e2bn.skool.co.uk/content/keystage3/biology/pc/learningsteps/UAMLC/launch.html>

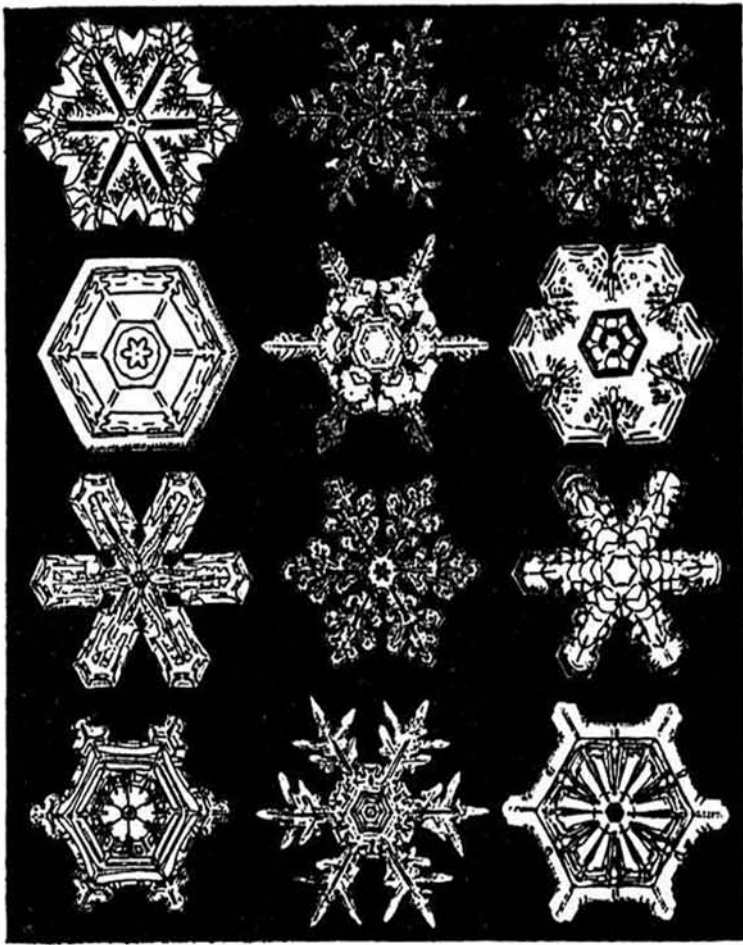
<http://www.ece.umd.edu/~taylor/optics4.htm>



Binocular Microscope.

A, A, eyepieces; B, screw to adjust same to width of eyes; C, C, screw for coarse adjustment of focus; D, screw for fine adjustment of focus; E, objective; F, stage; G, G, rectangular traversing movement; H, rotatory movement; I, illuminating mirror.





http://www.primaryscience.ie/dps2005/media/flash/act6/act6_launch.htm

http://www.classzone.com/books/earth_science/terc/content/investigations/es0506/es0506page01.cfm?chapter_no=investigation
(the above site is amazing!)

http://pbskids.org/dragonflytv/superdoit/grow_a_crystal.html

http://www.yesmag.ca/projects/crystal_gardens.html



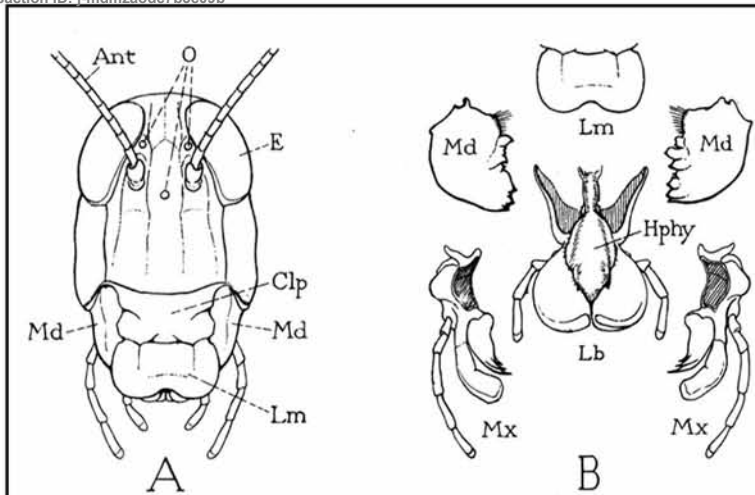


FIG. 66. The head and mouth parts of a grasshopper

A, facial view of the head, showing the positions of the antennae (*Ant*), the large compound eyes (*E*), the simple eyes, or ocelli (*O*), the broad front lip, or labrum (*Lm*) suspended from the cranium by the clypeus (*Clp*), and the bases of the mandibles (*Md*, *Md*) closed behind the labrum

B, the mouth parts separated from the head in relative positions, seen from in front: *Hphy*, hypopharynx, or tongue, attached to base of labium; *Lb*, labium; *Lm*, labrum; *Md*, mandibles; *Mx*, maxillae

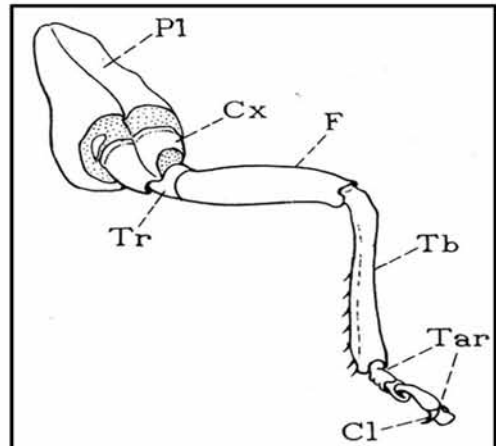


FIG. 64. The leg of a young grasshopper, showing the typical segmentation of an insect's leg

The leg is supported on a pleural plate (*Pl*) in the lateral wall of its segment. The basal segment of the free part of the leg is the coxa (*Cx*), then comes a small trochanter (*Tr*), next a long femur (*F*) separated by the knee bend from the tibia (*Tb*), and lastly the foot, consisting of a sub-segmented tarsus (*Tar*), and a pair of terminal claws (*Cl*) with an adhesive lobe between them

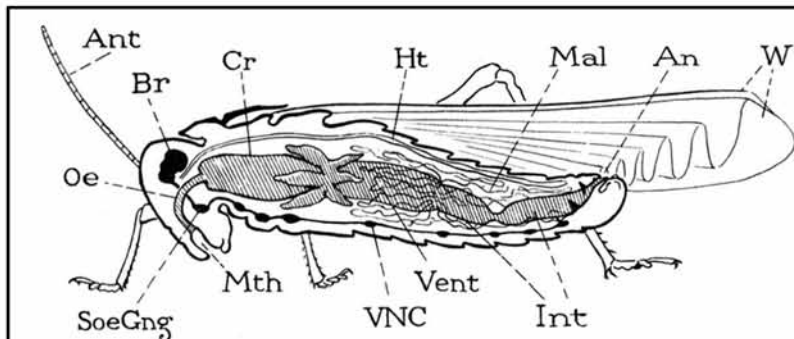
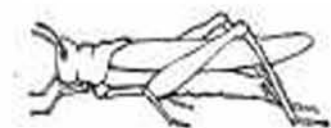


FIG. 67. Lengthwise section of a grasshopper, showing the general location of the principal internal organs, except the respiratory tracheal system and the organs of reproduction

An, anus; *Ant*, antenna; *Br*, brain; *Cr*, crop; *Ht*, heart; *Int*, intestine; *Mal*, Malpighian tubules; *Mth*, mouth; *Oe*, oesophagus; *SoeGng*, suboesophageal ganglion; *Vent*, stomach (ventriculus); *VNC*, ventral nerve cord; *W*, wings



Sports you can do in the snow!



©2008 Five in a Row Publishing

This is a single license download. Please do not copy or redistribute the contents of this file. To do so is to violate the terms of your download agreement. Thank you.

©2008 Five in a Row Publishing

This is a single license download. Please do not copy or redistribute the contents of this file. To do so is to violate the terms of your download agreement. Thank you.