

FI♡AR

FOLD&LEARN™

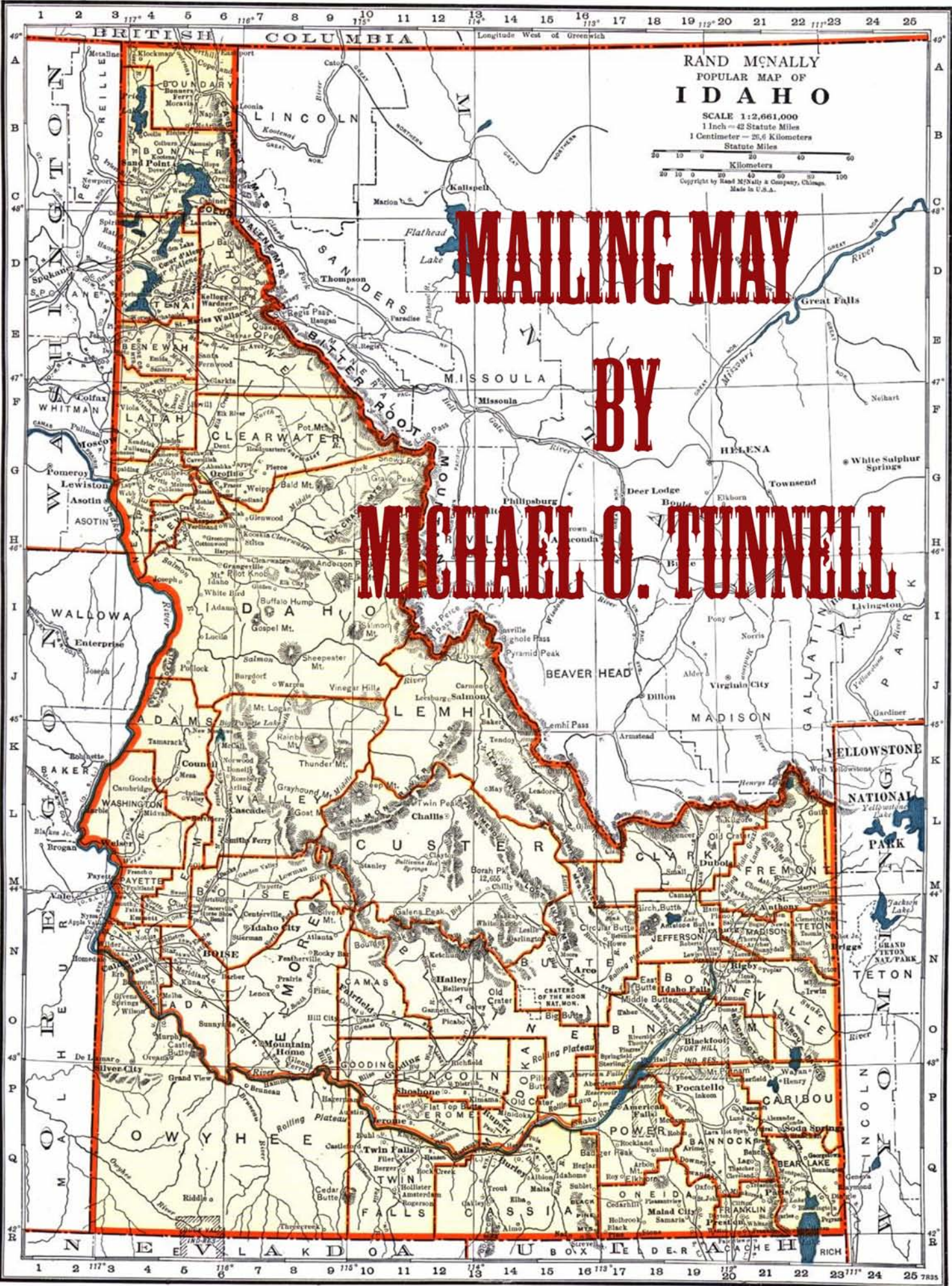


Mailing May

by Michael O. Tunnell

**five in a row** volume 4



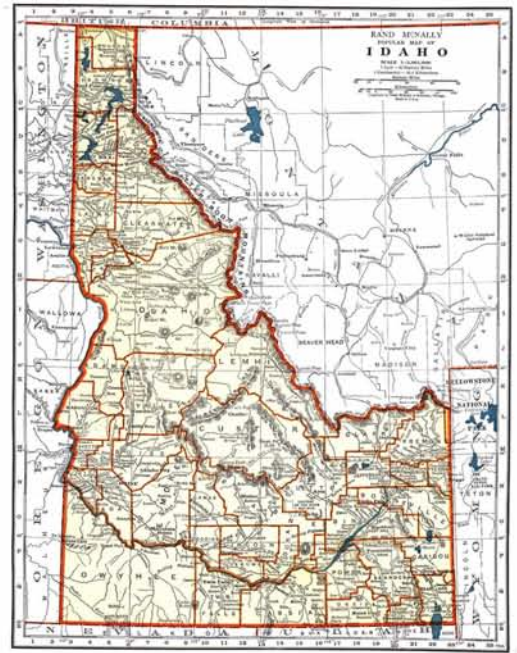


**MAILING MAY  
BY  
MICHAEL O. TUNNELL**





**Find  
Idaho  
on  
the  
map  
and  
color  
it  
in**







Idaho was the \_\_\_\_\_ state to  
join the Union in the United States of  
America in \_\_\_\_\_.

The capitol of Idaho is \_\_\_\_\_.

\_\_\_\_\_ and \_\_\_\_\_ passed through  
Idaho on their way to the Pacific in  
\_\_\_\_\_ and made their camp near what  
is now the town of \_\_\_\_\_.



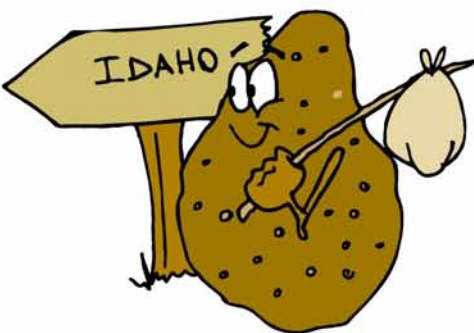
What is the town that May sent herself to?  
\_\_\_\_\_

What is the town southeast of Lewiston  
that is mentioned in the story?  
\_\_\_\_\_

The \_\_\_\_\_ Canyon is a part of the Nez  
Perce Indian \_\_\_\_\_.

What does Idaho grow more than any other  
state? \_\_\_\_\_

Idaho is included in the \_\_\_\_\_  
States.









**Check out these websites for more information on Daniel Boone**

<http://www.explorepahistory.com/hmarker.php?markerId=495>

<http://memory.loc.gov/ammem/today/jun07.html>

<http://www.eyewitnesstohistory.com/pfdanielboone.htm>

<http://www.myhero.com/myhero/hero.asp?hero=DanielBoone>

[http://www.americaslibrary.gov/cgi-bin/page.cgi/jb/revolut/boone\\_1](http://www.americaslibrary.gov/cgi-bin/page.cgi/jb/revolut/boone_1)



*Daniel Boone*



**Daniel Boone at twenty-one  
Came with his tomahawk, knife, and gun  
Home from the French and Indian War  
To North Carolina and the Yadkin shore.  
He married his maid with a golden band,  
Buidled his house and cleared his land;  
But the deep woods claimed their son again  
And he turned his face from the homes of men.  
Over the Blue Ridge, dark and lone,  
The Mountains of Iron, the Hills of Stone,  
Braving the Shawnee's jealous wrath,  
He made his way on the Warrior's Path.  
Alone he trod the shadowed trails;  
But he was lord of a thousand vales  
As he roved Kentucky, far and near,  
Hunting the buffalo, elk, and deer.  
What joy to see, what joy to win  
So fair a land for his kith and kin,  
Of streams unstained and woods unhewn!  
"Elbow room!" laughed Daniel Boone...  
—Arthur Guiterman**

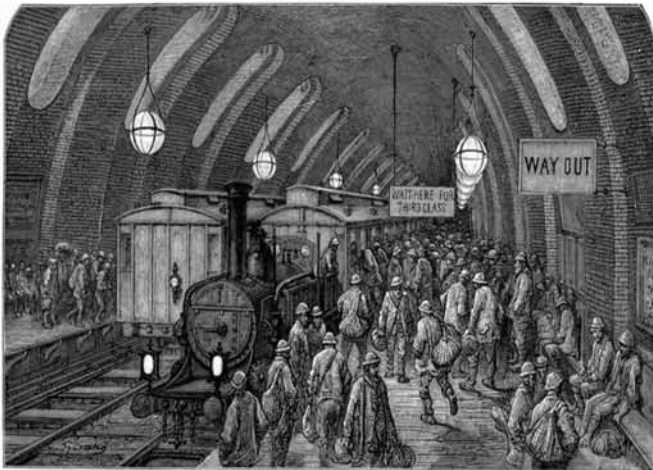




**Steam Train**



**A Trestle Bridge**

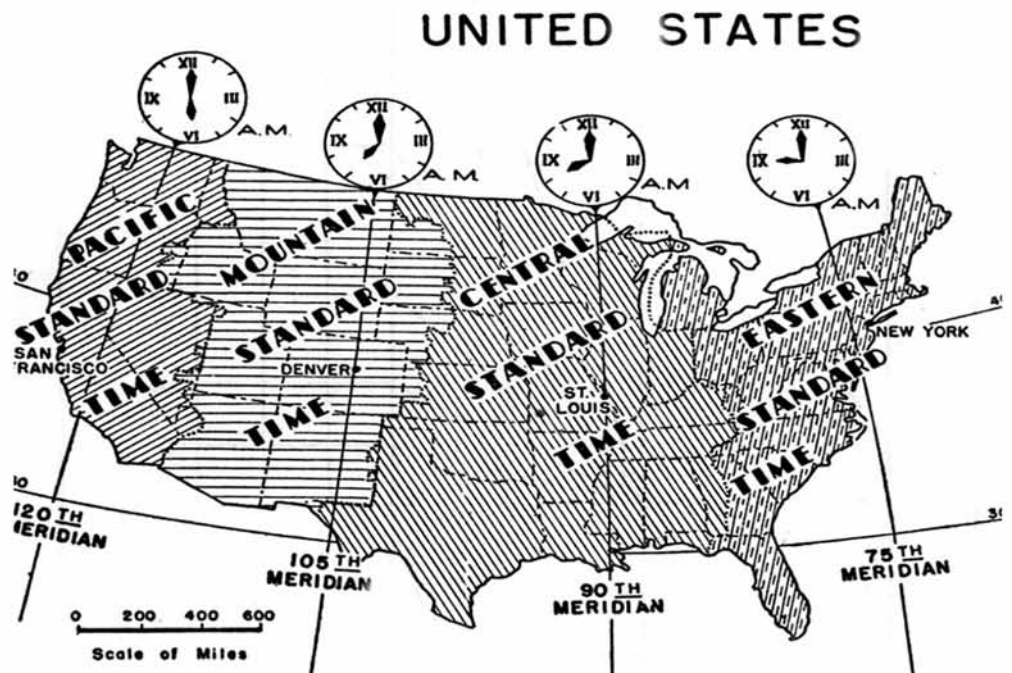


**Train Depot**



**A Mail Car**

**Time zones were instituted because the railroads wanted a more accurate and universal method to keep time so the trains could keep on schedule.**



**UNITED STATES**



# 1900's



Pot Bellied Stoves



High Button Shoes



Women's long dresses



Oil Lamps

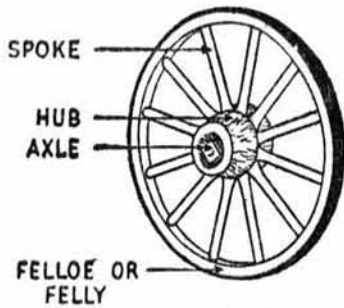


LOCOMOBILE, 1900

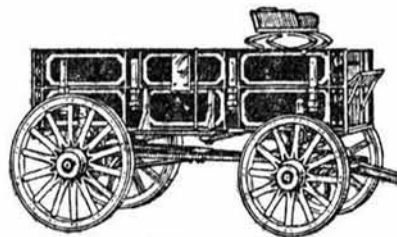
Formal Style Portraits



Steam Trains

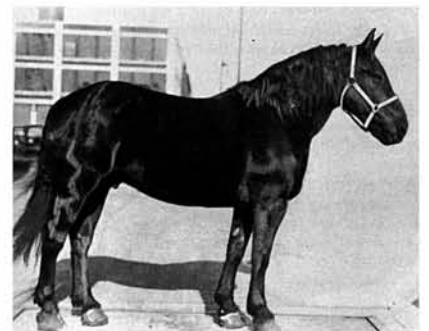


Wagon wheel

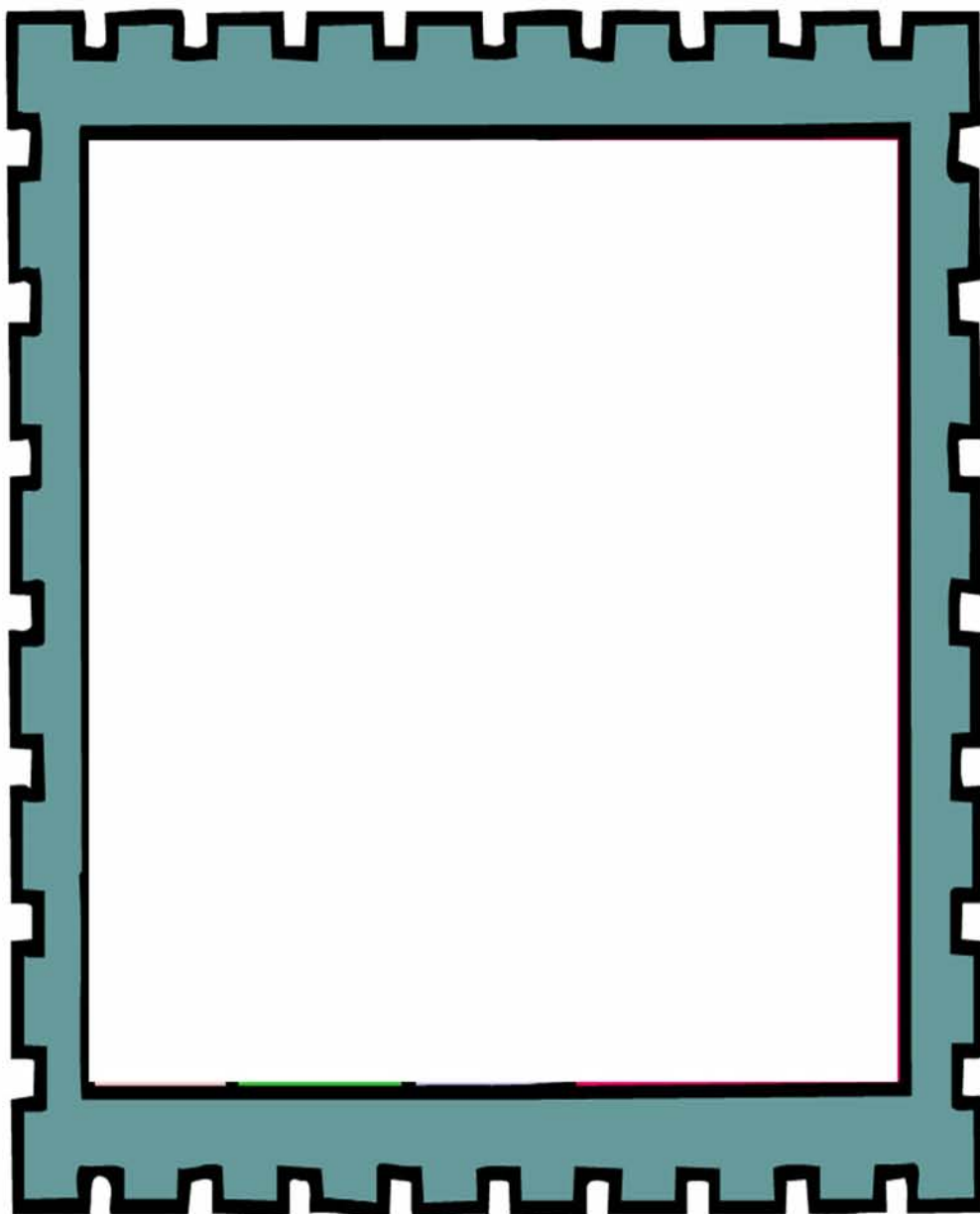


Wagon

Horses







The Pony Express

<http://www.xphomestation.com/frm-quiz.html>

<http://www.xphomestation.com/frm-quiz.html>

Design your own stamp!











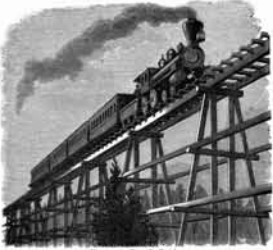
Wild boar (2½ ft. tall at the shoulder)

either a male hog, or a wild hog



Steel

a strong alloy (mixture) of iron and carbon



trestles

wooden or metal frames with attaching braces that hold up bridges or roads



poultry

a group of animals including chickens, ducks, geese or turkeys



Spell

a country term for “awhile” as in “stay a spell”





<http://www.netw.com/~rafter4/1932braids.htm>

<http://www.netw.com/~rafter4/braidpjts.htm>

<http://www.craftown.com/instruction/rugs.htm>

The above websites have info on braided rugs and even show you how to braid.

## MATCH THE FACIAL EXPRESSION WITH THE CORRECT PICTURE



ANGRY



GRUMPY



EXCITED



SAD



HAPPY



SERIOUS



# CAN YOU NAME THE TIME ON THE CLOCKS BELOW?



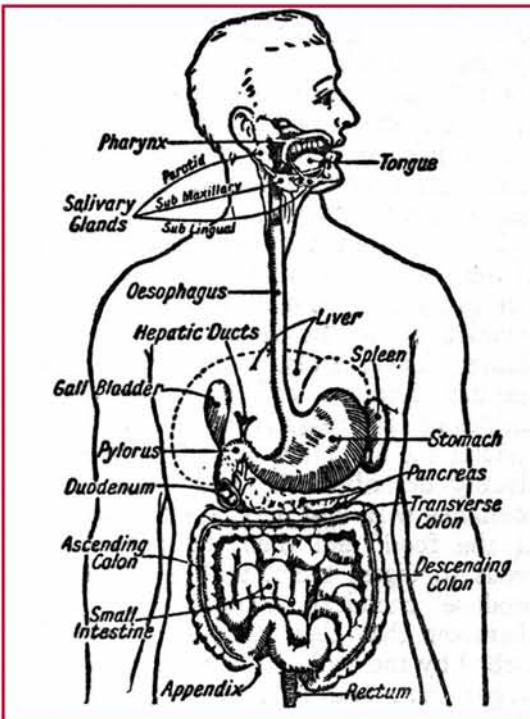




# SCALES

HAVE SOME FUN MEASURING A PACKAGE WITH THE WEBSITE TO THE RIGHT....

[HTTP://WWW.BBC.CO.UK/SCHOOLS/KS2/BITESIZE/MATHS/ACTIVITIES/MEASURES\\_FS.SHTML](http://www.bbc.co.uk/schools/ks2/bitesize/maths/activities/measures_fs.shtml)



SALIVA IS PRODUCED BY THE BODY TO AID IN DIGESTION.



DOMESTIC ANIMALS ARE THOSE THAT LIVE WITH MAN, OR ARE UNDER THE CARE OF MAN.

WILD ANIMALS ARE THOSE ANIMALS THAT ARE UNTAMED AND NOT CARED FOR BY MAN

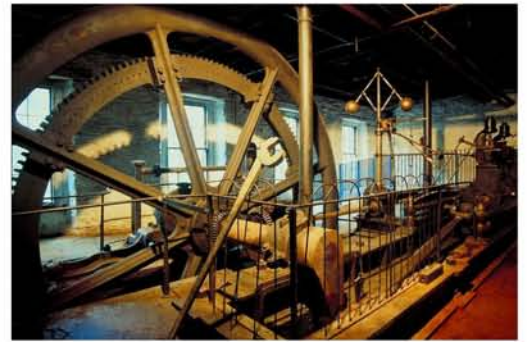
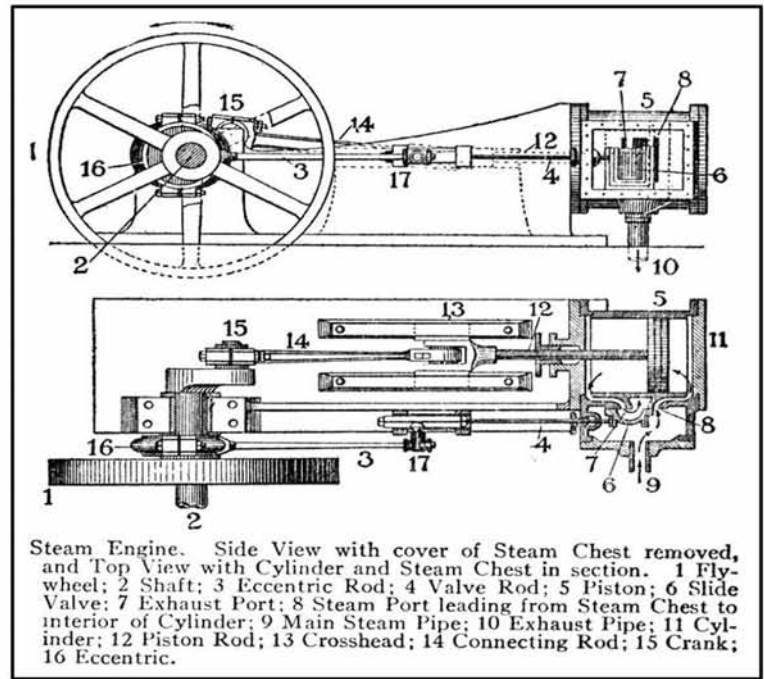
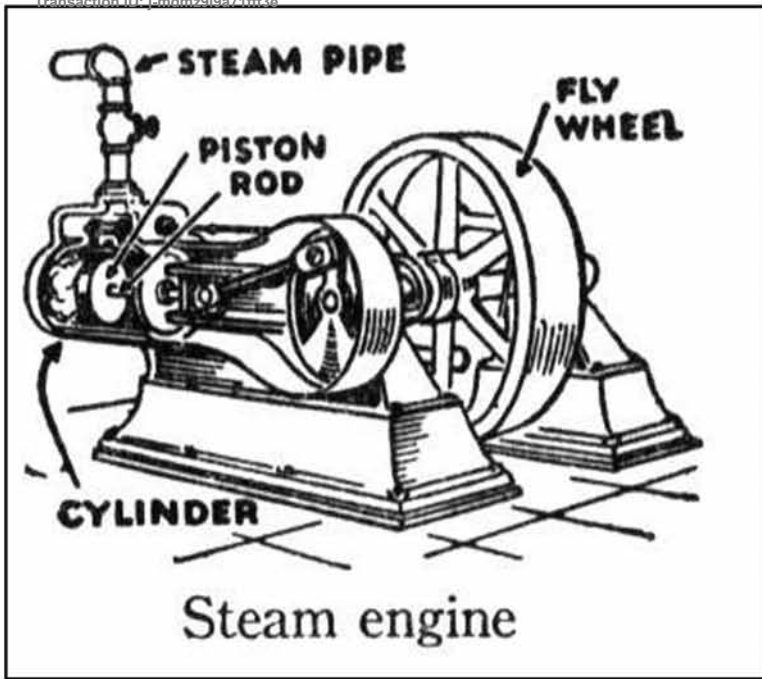
CAN YOU LIST DIFFERENT ANIMALS FOR EACH CATEGORY?

HERE ARE SOME EXAMPLES OF BOTH:

DOMESTIC ANIMALS	WILD ANIMALS







"IN YOUR ANGER DO NOT SIN":  
DO NOT LET THE SUN GO DOWN WHILE  
YOU ARE STILL ANGRY,"  
EPHESIANS 4:26







"I WAITED PATIENTLY FOR THE LORD;  
HE TURNED TO ME AND HEARD MY CRY."  
PSALM 40:1



PHILIPPIANS 4:6

"DO NOT BE  
ANXIOUS  
ABOUT  
ANYTHING,  
BUT IN  
EVERYTHING,  
BY PRAYER  
AND P  
ETITION,  
WITH  
THANKSGIVING,  
PRESENT  
YOUR  
REQUESTS TO  
GOD."

"HOPE DEFERRED MAKES THE HEART SICK,  
BUT A LONGING FULFILLED IS A TREE OF LIFE."  
PROVERBS 13:12

"WHICH OF YOU, IF HIS SON  
ASKS FOR BREAD, WILL GIVE  
HIM A STONE? 10OR IF HE  
ASKS FOR A FISH, WILL GIVE  
HIM A SNAKE? 11IF YOU, THEN,  
THOUGH YOU ARE EVIL, KNOW  
HOW TO GIVE GOOD GIFTS TO  
YOUR CHILDREN, HOW MUCH  
MORE WILL YOUR FATHER IN  
HEAVEN GIVE GOOD GIFTS TO  
THOSE WHO ASK HIM!"

MATTHEW 7:9-11

©2008 Five in a Row Publishing

This is a single license download. Please do not  
copy or redistribute the contents of this file. To do  
so is to violate the terms of your download  
agreement. Thank you.





©2008 Five in a Row Publishing

This is a single license download. Please do not copy or redistribute the contents of this file. To do so is to violate the terms of your download agreement. Thank you.