

FI♥AR

FOLD&LEARN™



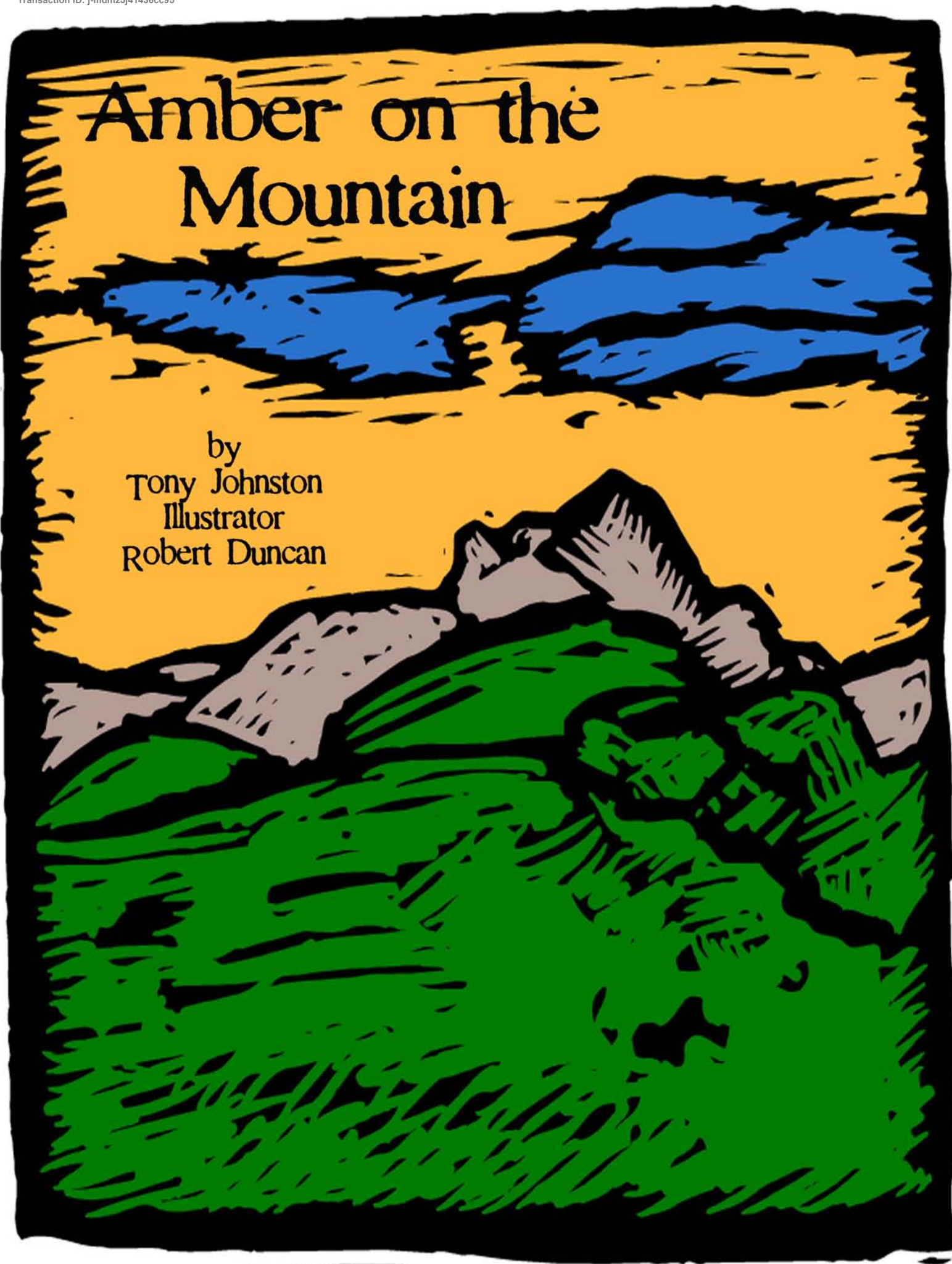
Amber on the Mountain

by Tony Johnston

five in a row volume 3

Amber on the Mountain

by
Tony Johnston
Illustrator
Robert Duncan



SOCIAL STUDIES: SETTING

SETTING:

**THE LOCALE OR PERIOD
IN WHICH THE ACTION
OF A NOVEL, PLAY, FILM,
ETC., TAKES PLACE**

There isn't a particular setting for this book, but it takes place somewhere in the mountains.

Can you list places that you know have mountains?





Porcupine

An animal with sharp quills,
found in the woods



Skedaddle(d)

Get out (leave) fast



Balk(ity)

Stubbornly refuse to move;
so this is a creative adjective form



slop

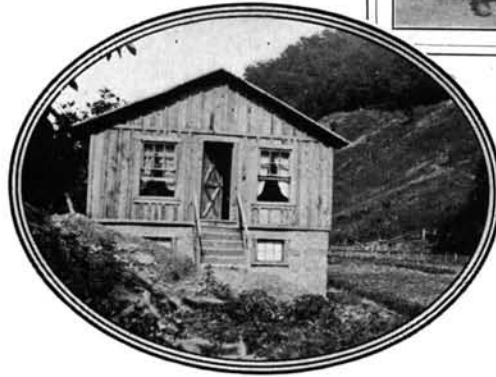
The mixture of waste
food fed to pigs



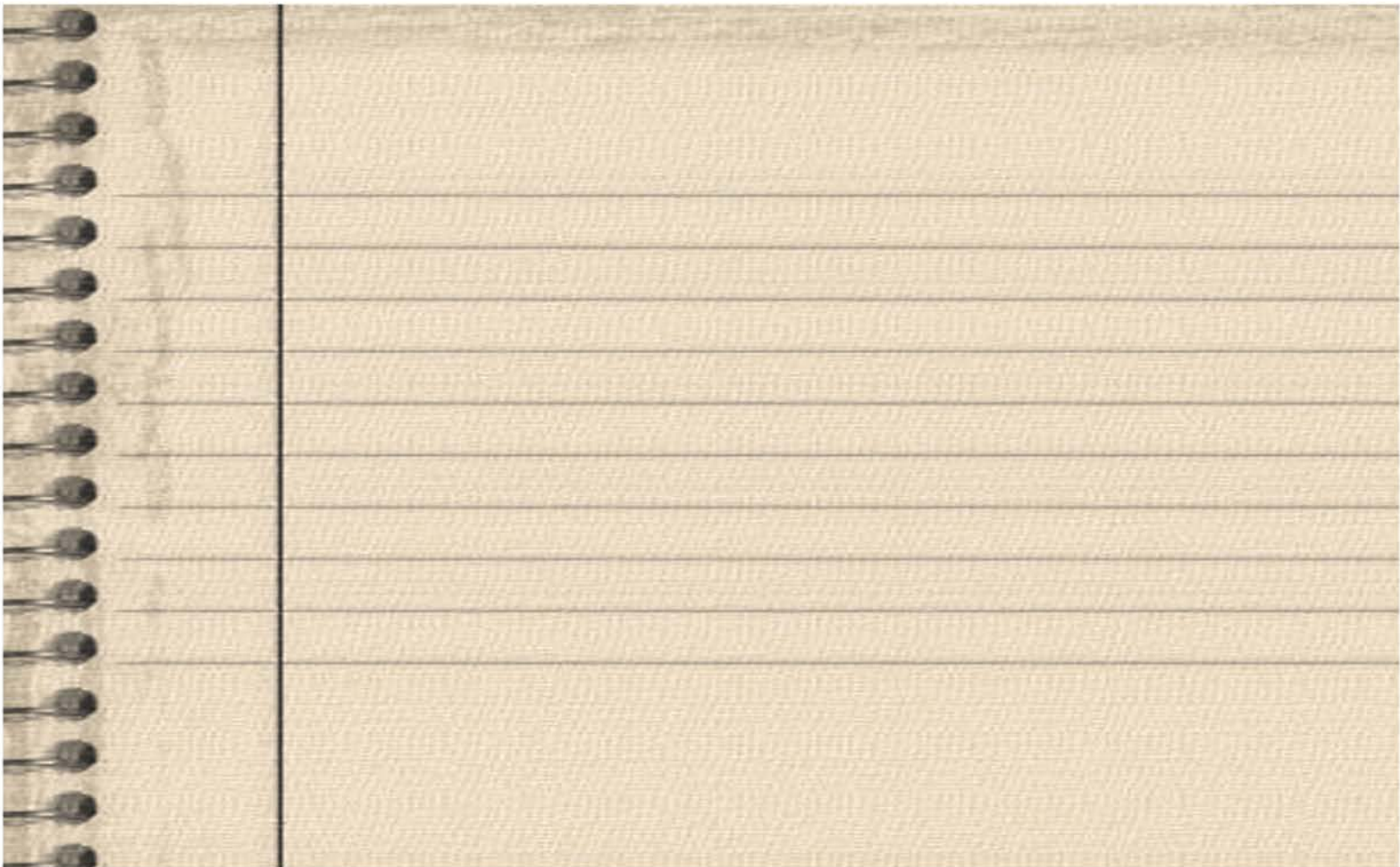
pelter(ing)

Strike or assail repeatedly;
bombard (as by rain drops)

Mountain Culture



What do you think it would have been to live like Amber did?



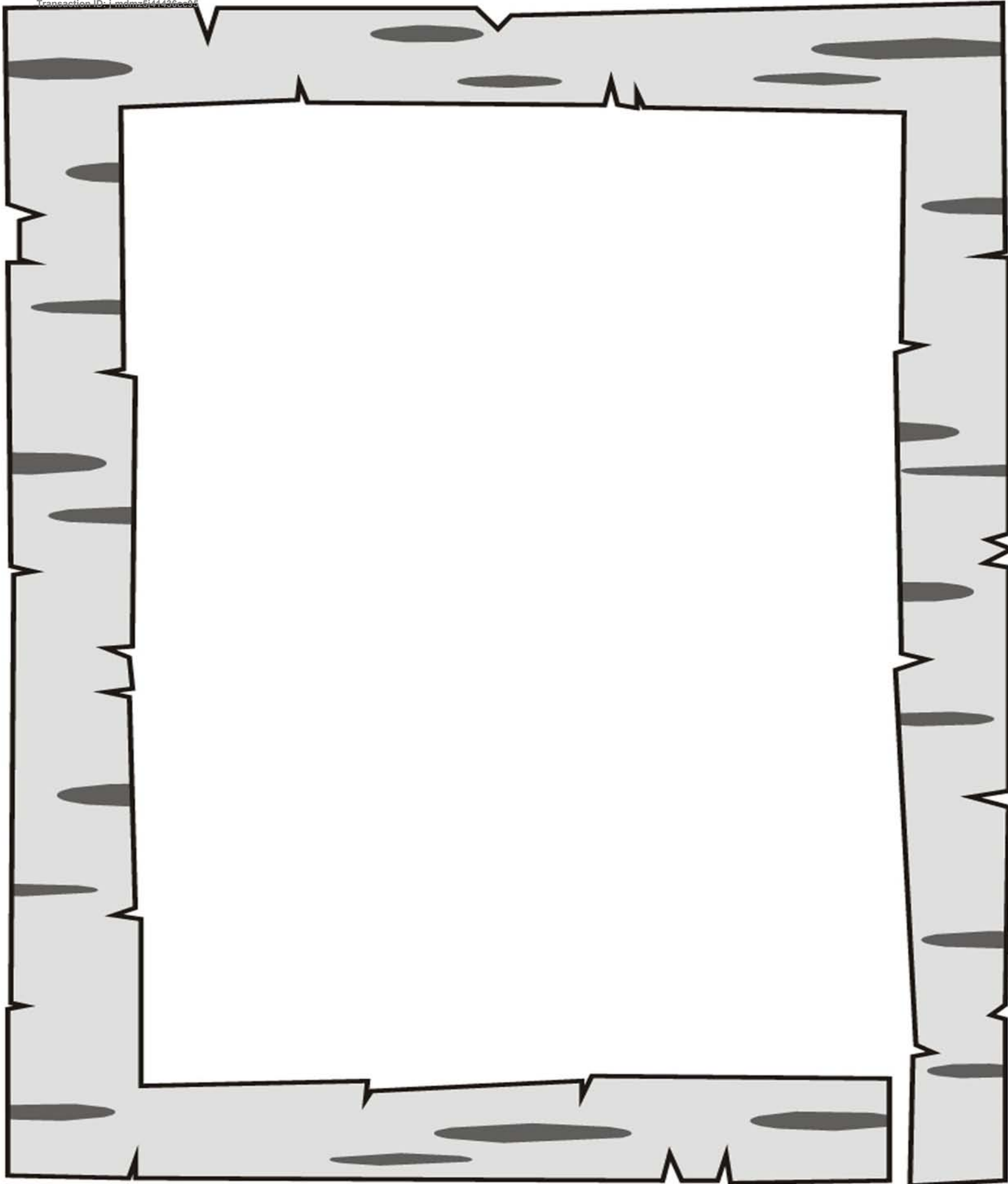
Simile-a comparison of two unlike things using connecting words such as "like", "as", etc.

Example from the story:

Amber and Anna stuck to each other **LIKE** burrs.



Come up with some examples of your own below:



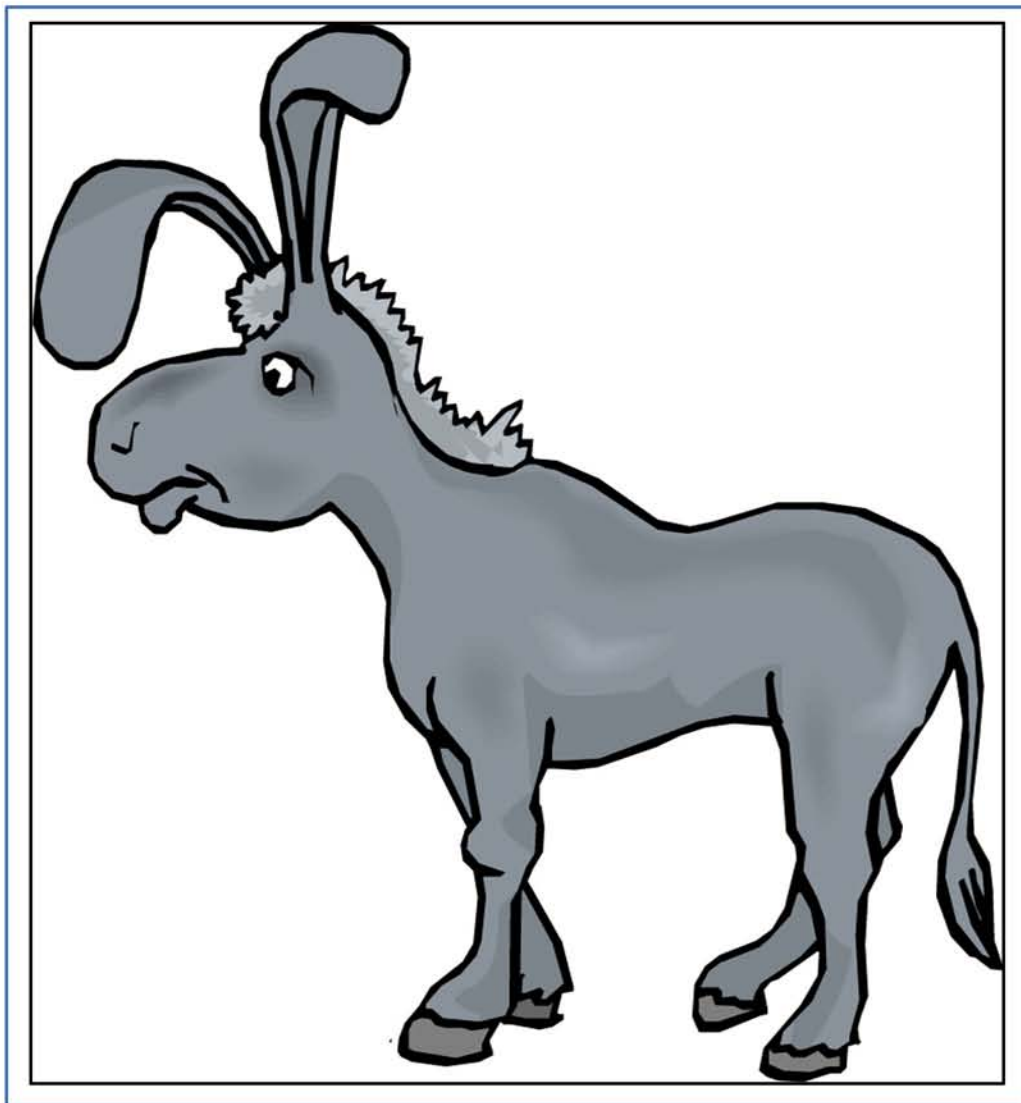
"Mountain people went down the road and learned the ease of city ways.
City people camp up the road and learned the beauty of mountain ways."

Illustrate this parrallel in the space above as suggested on page 105.



Robert Duncan is the illustrator of this book and you can find out more about him by visiting this website. There are samples of his works and a biography as well.

<http://www.robertduncanstudios.com/>



Get some clay and recreate a mule out of clay using the picture above and what you think a mule would look like. Have fun!



How many letters
are in the alphabet?

A large empty rectangular box with a red border, intended for the student to write the number of letters in the alphabet.

DECEMBER						
S	M	T	W	T	F	S
..	1
2	3	4	5	6	7	8
9	10	11	12	13	14	15
16	17	18	19	20	21	22
23	24	25	26	27	28	29
30	31

Page of calendar

How many months in a calendar year?

A large empty rectangular box with a green border, intended for the student to write the number of months in a calendar year.

What are the months on a calendar?

- 1.
- 2.
- 3.
- 4.
- 5.
- 6.
- 7.
- 8.
- 9.
- 10.
- 11.
- 12.

Use this space to write out your alphabet to count them:

A large empty rectangular box with a green border, intended for the student to write out the alphabet to count the letters.



The Andes mountains extend over seven countries: Argentina, Bolivia, Chile, Colombia, Ecuador, Peru and Venezuela, some of which are known as Andean States.

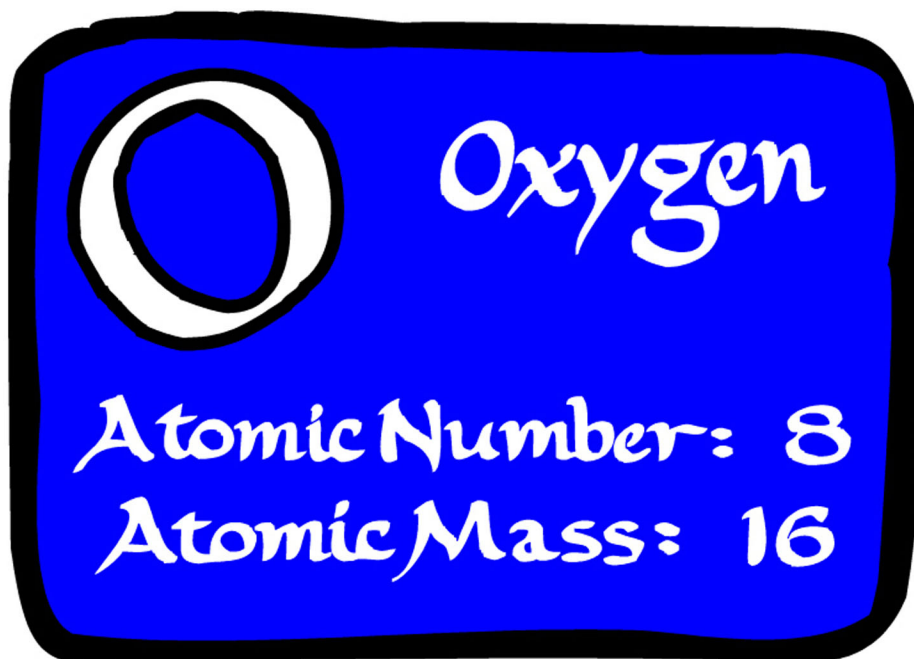
The Andes are roughly 7000 km (4400 mi) long, 500 km (300 mi) wide in some parts (widest between 18° to 20° S latitude), and of an average height of about 4000 m (13,000 ft).



If you want to learn more about the Andes Mountains check out this website
<http://www.peakware.com/areas.html?a=396>

Learn more about oxygen here:

http://www.chem4kids.com/files/elements/008_speak.html



©2009 Five in a Row Publishing

This is a single license download. Please do not copy or redistribute the contents of this file. To do so is to violate the terms of your download agreement. Thank you.